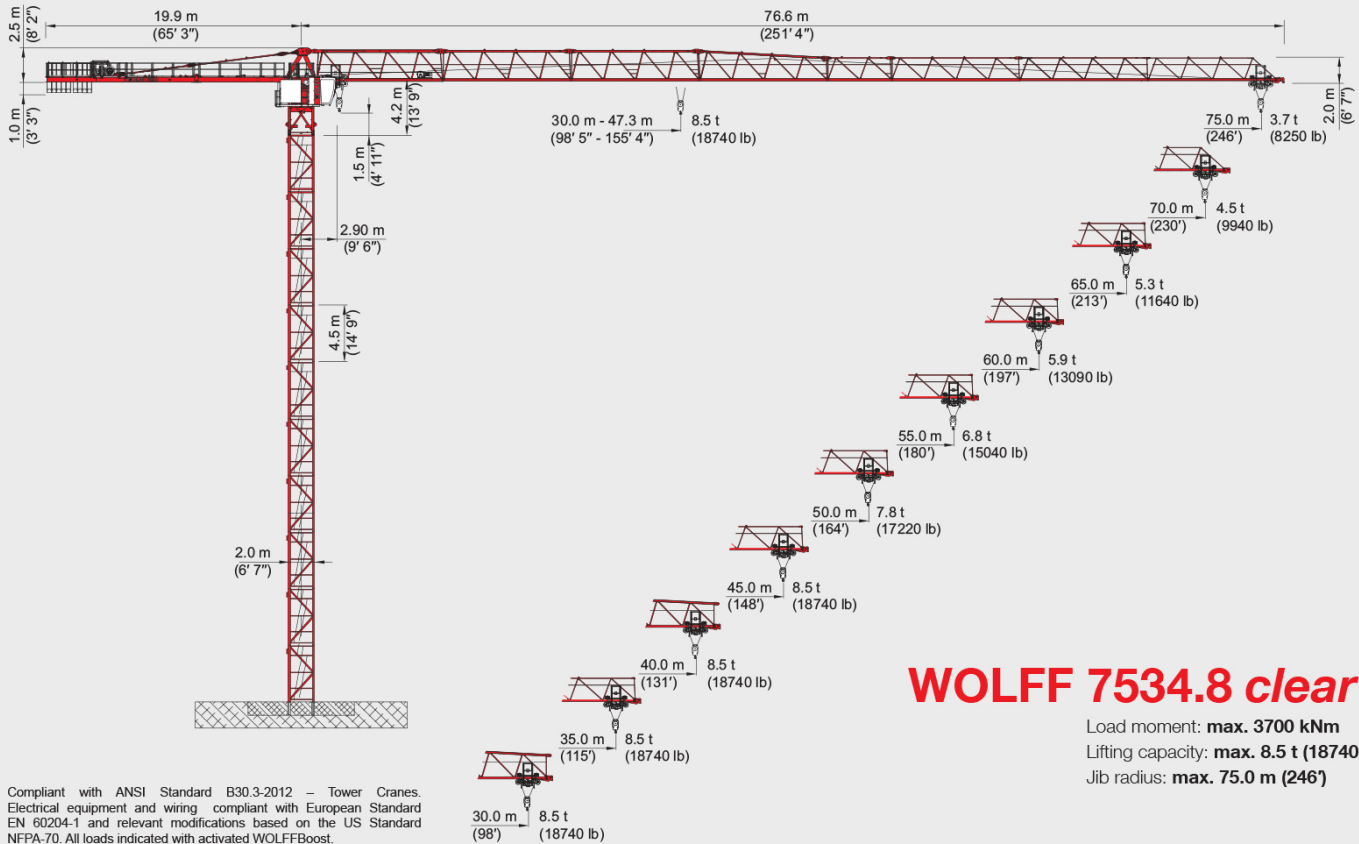




## WOLFFKRAN

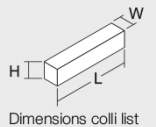


## WOLFF 7534.8 clear US

Load moment: **max. 3700 kNm**  
 Lifting capacity: **max. 8.5 t (18740 lb)**  
 Jib radius: **max. 75.0 m (246')**

### WOLFF 7534.8 clear US · Colli List

Pos.	Pcs.	Description	Colli	Length [m] (ft)	Width [m] (ft)	Height [m] (ft)	Weight [kg] (lb)	Volume [m³] (ft³)
1	1	Tower top complete with stay parts		6.79 (22' 3")	2.65 (8' 8")	2.33 (7' 8")	11657 (25699)	41.92 (1480.39)
	1	Tower top upper part Item 1 disassembled with stay parts		2.25 (7' 5")	0.77 (2' 6")	2.27 (7' 5")	1837 (4050)	3.93 (138.79)
	1	Tower top lower part Item 1 disassembled		5.12 (16' 10")	2.65 (8' 8")	2.33 (7' 8")	9820 (21649)	31.61 (1116.3)
2	1	Operator cabin station with cabin attachment and control cabinet		4.77 (15' 8")	2.16 (7' 1")	2.56 (8' 5")	2830 (6239)	26.38 (931.6)
3	1	Counterjib folded with auxiliary crane and stay parts		11.88 (39' 0")	2.30 (7' 7")	2.25 (7' 5")	11685 (25760)	61.48 (2171.15)
4	1	Hw 845 FU Hoisting gear platform with hoist rope (485 m = 615 kg (1591' = 1356 lb)) and 2nd brake		1.69 (5' 7")	1.72 (5' 8")	1.04 (3' 5")	4400 (9700)	4.45 (157.15)
5	1	Hw 875 FU Hoisting gear platform with hoist rope (1025 m = 1300 kg (3363' = 2866 lb)) and 2nd brake		1.95 (6' 5")	1.68 (5' 6")	1.23 (4' 0")	5210 (11486)	4.03 (142.32)
6	1	Jib part 1		10.33 (33' 1")	1.46 (4' 9")	2.59 (8' 6")	4570 (10075)	39.06 (1379.39)
7	1	Jib part 2		10.42 (34' 2")	1.40 (4' 7")	2.55 (8' 4")	2840 (6261)	37.20 (1313.71)
8	1	Jib part 3		10.44 (34' 3")	1.40 (4' 7")	2.52 (8' 3")	2260 (4982)	36.83 (1300.64)
9	1	Jib part 4		10.41 (34' 2")	1.40 (4' 7")	2.48 (8' 2")	1890 (4167)	36.14 (1276.27)
10	1	Jib part 5		5.38 (17' 8")	1.40 (4' 7")	1.93 (6' 4")	830 (1830)	14.54 (513.48)
11	1	Jib part 6		2.87 (9' 5")	1.40 (4' 7")	1.94 (6' 4")	480 (1058)	7.80 (275.45)
12	1	Jib part 7		10.36 (34' 0")	1.40 (4' 7")	1.93 (6' 4")	1520 (3351)	27.85 (983.51)
13	1	Jib part 8		10.34 (33' 11")	1.40 (4' 7")	1.92 (6' 4")	1040 (2293)	27.79 (981.4)
14	1	Jib part 9		10.30 (33' 10")	1.40 (4' 7")	1.91 (6' 3")	800 (1764)	27.54 (972.57)
15	1	Rope swivel traverse		0.99 (3' 3")	1.38 (4' 6")	0.46 (1' 6")	170 (375)	0.63 (22.25)
16	1	Trolley LK 8		1.87 (6' 2")	1.64 (5' 5")	0.97 (3' 2")	415 (914)	2.98 (105.24)
17	1	Hook block U 8		0.52 (1' 8")	0.19 (0' 7")	1.11 (3' 8")	345 (760)	0.11 (3.88)
18	9	Counterweight blocks		1.41 (4' 8")	0.36 (1' 2")	2.28 (7' 6")	2700 (5952)	1.16 (40.97)



61000395 - 12/2016

All rights reserved regarding technical and content changes.

WOLFFKRAN GmbH  
 Austraße 72  
 74076 Heilbronn  
 Germany  
 Tel: +49 7131 9815-0  
 Fax: +49 7131 9815-355  
 info@wolffkran.de



## WOLFF 7534.8 clear US

### Main Components

30 m (98') basic jib with trolley gear. Extensions up to 75 m (246') radius in 2.5 m (8') steps. Slewing frame with two slewing gears, slew bearing with central lubrication unit and slipping system, operator cabin station with control cabinet. Counterjib with hoisting platform and counterweights.

### Drive Technique

All drives frequency controlled squirrel cage motors, fully thermal protected. Hoisting winches Hw 845 FU or Hw 875 FU. Two slewing gears with electrically operated weathervaning device. Automatic windforce compensation controls. Trolley gear.

### Electrical Equipment

Multivoltage equipment for supplies of 480 V Y / 277 V 60 Hz. Electronic safety crane controls with bus technology. Incremental absolute encoders for all operating movements. Electronic load measuring device at basic jib section. Multilingual graphic display showing information to operator, both operational and diagnostics.

### Safety Devices

Electronic overload protection with WOLFFBoost. Increased load moment limitation due to automatic hoist speed reduction. Menu guided setting of overload protection system and of all limiters from operator's cabin. Working space limiter. Anti-collision interface. WOLFFLink data transfer System. Trolley rope breakage safety device.

### Tower Elements, Climbing Device

Tower configuration of WOLFF system tower elements. WOLFF slug bolt connection. Detachable hydraulic WOLFF external climber KWH 20.3.1 and KWH 20.6.1 or the internal climber KSH 20 SH.

### Undercarriage UW, Travelling Cross Frame KRF

WOLFF undercarriage UW can be used with gauge from 6.0 m up to 8.0 m (20' - 26') or travelling crossframe KRF with 6.0 m up to 10.0 m (20' - 33').

### Cross Frame Element KRE, Cross Frame KR

For stationary installation. KRE elements can be modified to UW. Cross frames KR can be modified to KRF.

### Power Requirements and hook paths (Slewing part)

66 kVA (Hw 845 FU), hook path 190 m (623') in 2-fall operation.  
93 kVA (Hw 875 FU), hook path 460 m (1509') in 2-fall operation.

### Mechanisms · WOLFF 7534.8 clear US · (Hw 845 FU)

Motor [kW] (hp)	45 (60)	9.0 (12)	2 x 6.0 (2 x 8)	2 x 5.5 (2 x 7.4)
Speed	0 - 1.6 t (0 - 3527 lb) 0 ... 115 m/min (0 ... 377 ft/min) stepless 0 - 8.5 t (0 - 18740 lb) 0 ... 26 m/min (0 ... 85 ft/min)	0 - 3.0 t (0 - 6614 lb) 0 ... 100 m/min (0 ... 328 ft/min) stepless 0 - 8.5 t (0 - 18740 lb) 0 ... 65 m/min (0 ... 213 ft/min)	0.8 min <sup>-1</sup>	25.0 m/min (82 ft/min)
Hook path [m] (ft)	190 (623)			

### Mechanisms · WOLFF 7534.8 clear US · (Hw 875 FU)

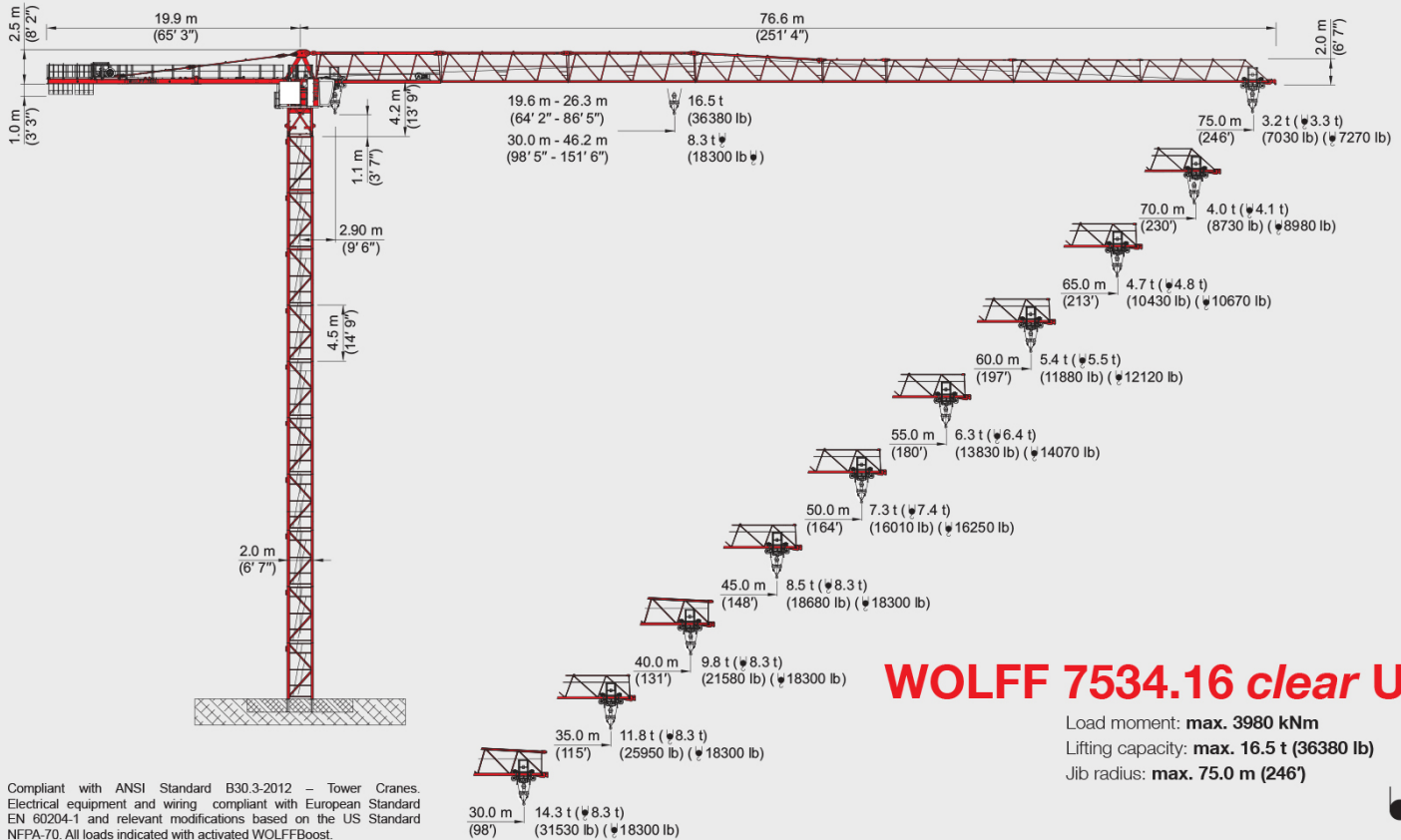
Motor [kW] (hp)	75 (100)	9.0 (12)	2 x 6.0 (2 x 8)	2 x 5.5 (2 x 7.4)
Speed	0 - 1.7 t (0 - 3748 lb) 0 ... 185 m/min (0 ... 607 ft/min) stepless 0 - 8.5 t (0 - 18740 lb) 0 ... 44 m/min (0 ... 144 ft/min)	0 - 3.0 t (0 - 6614 lb) 0 ... 100 m/min (0 ... 328 ft/min) stepless 0 - 8.5 t (0 - 18740 lb) 0 ... 65 m/min (0 ... 213 ft/min)	0.80 min <sup>-1</sup>	25.0 m/min (82 ft/min)
Hook path [m] (ft)	460 (1509)			

### Load Data [t] (lb) · WOLFF 7534.8 clear US · BOOST

Jib radius [m] (ft)	20.0 (65' 7")	25.0 (82' 0")	30.0 (98' 5")	35.0 (114' 10")	40.0 (131' 3")	45.0 (147' 8")	50.0 (164' 1")	55.0 (180' 5")	60.0 (196' 10")	65.0 (213' 3")	70.0 (229' 6")	75.0 (246' 1")
75.0 (246)	2.9 - 37.3 (9' 6" - 122' 3")	8.5 (18740)	8.5 (18740)	8.5 (18740)	7.9 (17300)	6.9 (15150)	6.1 (13420)	5.5 (12010)	4.9 (10840)	4.5 (9830)	4.1 (8990)	3.7 (8250)
72.5 (238)	2.9 - 38.5 (9' 6" - 126' 5")	8.5 (18740)	8.5 (18740)	8.5 (18740)	8.2 (17970)	7.1 (15740)	6.3 (13960)	5.7 (12500)	5.1 (11290)	4.7 (10250)	4.3 (9370)	
70.0 (230)	2.9 - 40.5 (9' 6" - 132' 9")	8.5 (18740)	8.5 (18740)	8.5 (18740)	8.5 (18740)	7.6 (16640)	6.7 (14760)	6.0 (13230)	5.4 (11950)	4.9 (10870)	4.5 (9940)	
67.5 (221)	2.9 - 41.4 (9' 6" - 135' 9")	8.5 (18740)	8.5 (18740)	8.5 (18740)	8.5 (18740)	7.7 (17060)	6.9 (15150)	6.2 (13570)	5.6 (12270)	5.1 (11170)		
65.0 (213)	2.9 - 42.9 (9' 6" - 140' 8")	8.5 (18740)	8.5 (18740)	8.5 (18740)	8.5 (18740)	8.1 (17750)	7.2 (15760)	6.4 (14140)	5.8 (12780)	5.3 (11640)		
62.5 (205)	2.9 - 43.4 (9' 6" - 142' 5")	8.5 (18740)	8.5 (18740)	8.5 (18740)	8.5 (18740)	8.2 (18000)	7.3 (15980)	6.5 (14340)	5.9 (12970)			
60.0 (197)	2.9 - 43.8 (9' 6" - 143' 7")	8.5 (18740)	8.5 (18740)	8.5 (18740)	8.5 (18740)	8.2 (18160)	7.3 (16140)	6.6 (14480)	5.9 (13090)			
57.5 (189)	2.9 - 44.6 (9' 6" - 146' 4")	8.5 (18740)	8.5 (18740)	8.5 (18740)	8.5 (18740)	8.4 (18560)	7.5 (16490)	6.7 (14800)				
55.0 (180)	2.9 - 45.2 (9' 6" - 148' 5")	8.5 (18740)	8.5 (18740)	8.5 (18740)	8.5 (18740)	8.5 (18740)	7.6 (16750)	6.8 (15040)				
52.5 (172)	2.9 - 46.2 (9' 6" - 151' 8")	8.5 (18740)	8.5 (18740)	8.5 (18740)	8.5 (18740)	8.5 (18740)	7.8 (17170)					
50.0 (164)	2.9 - 46.4 (9' 6" - 152' 1")	8.5 (18740)	8.5 (18740)	8.5 (18740)	8.5 (18740)	8.5 (18740)	7.8 (17220)					
47.5 (156)	2.9 - 47.3 (9' 6" - 155' 4")	8.5 (18740)	8.5 (18740)	8.5 (18740)	8.5 (18740)	8.5 (18740)						
45.0 (148)	2.9 - 48.0 (9' 6" - 157' 8")	8.5 (18740)	8.5 (18740)	8.5 (18740)	8.5 (18740)	8.5 (18740)						
42.5 (139)	2.9 - 42.5 (9' 6" - 139' 5")	8.5 (18740)	8.5 (18740)	8.5 (18740)	8.5 (18740)							
40.0 (131)	2.9 - 40.0 (9' 6" - 131' 3")	8.5 (18740)	8.5 (18740)	8.5 (18740)	8.5 (18740)							
37.5 (123)	2.9 - 37.5 (9' 6" - 123' 0")	8.5 (18740)	8.5 (18740)	8.5 (18740)								
35.0 (115)	2.9 - 35.0 (9' 6" - 114' 10")	8.5 (18740)	8.5 (18740)	8.5 (18740)								
32.5 (107)	2.9 - 32.5 (9' 6" - 106' 8")	8.5 (18740)	8.5 (18740)									
30.0 (98)	2.9 - 30.0 (9' 6" - 98' 5")	8.5 (18740)	8.5 (18740)									



## WOLFFKRAN



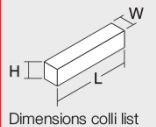
## WOLFF 7534.16 clear US

Load moment: **max. 3980 kNm**  
 Lifting capacity: **max. 16.5 t (36380 lb)**  
 Jib radius: **max. 75.0 m (246')**

Compliant with ANSI Standard B30.3-2012 – Tower Cranes. Electrical equipment and wiring compliant with European Standard EN 60204-1 and relevant modifications based on the US Standard NFPA-70. All loads indicated with activated WOLFFBoost.

### WOLFF 7534.16 clear US · Colli List

Pos.	Pcs.	Description	Colli	Length [m] (ft)	Width [m] (ft)	Height [m] (ft)	Weight [kg] (lb)	Volume [m³] (ft³)
1	1	Tower top complete with stay parts		6.79 (22' 3")	2.65 (8' 8")	2.33 (7' 8")	11657 (25699)	41.92 (1480.39)
	1	Tower top upper part Item 1 disassembled with stay parts		2.25 (7' 5")	0.77 (2' 6")	2.27 (7' 5")	1837 (4050)	3.93 (138.79)
	1	Tower top lower part Item 1 disassembled		5.12 (16' 10")	2.65 (8' 8")	2.33 (7' 8")	9820 (21649)	31.61 (1116.3)
2	1	Operator cabin station with cabin attachment and control cabinet		4.77 (15' 8")	2.16 (7' 1")	2.56 (8' 5")	2830 (6239)	26.38 (931.6)
3	1	Counterjib folded with auxiliary crane and stay parts		11.88 (39' 0")	2.30 (7' 7")	2.25 (7' 5")	11685 (25761)	61.48 (2171.15)
4	1	Hw 845 FU Hoisting gear platform with hoist rope (485 m = 615 kg (1591' = 1356 lb) and 2nd brake		1.69 (5' 7")	1.72 (5' 8")	1.04 (3' 5")	4400 (9700)	4.45 (157.15)
5	1	Hw 875 FU Hoisting gear platform with hoist rope (1025 m = 1300 kg (3363' = 2866 lb) and 2nd brake		1.95 (6' 5")	1.68 (5' 6")	1.23 (4' 0")	5210 (11486)	4.03 (142.32)
6	1	Jib part 1		10.33 (33' 1")	1.46 (4' 9")	2.59 (8' 6")	4570 (10075)	39.06 (1379.39)
7	1	Jib part 2		10.42 (34' 2")	1.40 (4' 7")	2.55 (8' 4")	2840 (6261)	37.20 (1313.71)
8	1	Jib part 3		10.44 (34' 3")	1.40 (4' 7")	2.52 (8' 3")	2260 (4982)	36.83 (1300.64)
9	1	Jib part 4		10.41 (34' 2")	1.40 (4' 7")	2.48 (8' 2")	1890 (4167)	36.14 (1276.27)
10	1	Jib part 5		5.38 (17' 8")	1.40 (4' 7")	1.93 (6' 4")	830 (1830)	14.54 (513.48)
11	1	Jib part 6		2.87 (9' 5")	1.40 (4' 7")	1.94 (6' 4")	480 (1058)	7.80 (275.45)
12	1	Jib part 7		10.36 (34' 0")	1.40 (4' 7")	1.93 (6' 4")	1520 (3351)	27.85 (983.51)
13	1	Jib part 8		10.34 (33' 11")	1.40 (4' 7")	1.92 (6' 4")	1040 (2293)	27.79 (981.4)
14	1	Jib part 9		10.30 (33' 10")	1.40 (4' 7")	1.91 (6' 3")	800 (1764)	27.54 (972.57)
15	1	Rope swivel traverse		0.99 (3' 3")	1.38 (4' 6")	0.46 (1' 6")	170 (375)	0.63 (22.25)
16	1	Trolley LK 8/16		1.87 (6' 2")	2.01 (6' 7")	1.15 (3' 9")	545 (1202)	4.32 (152.56)
17	1	Hook block U 8/16 AU		1.02 (3' 4")	0.27 (0' 11")	1.84 (6' 0")	630 (1389)	0.51 (18.01)
18	9	Counterweight blocks		1.41 (4' 8")	0.36 (1' 2")	2.28 (7' 6")	2700 (5952)	1.16 (40.97)



6100036 - 12/2016

All rights reserved regarding technical and content changes.

WOLFFKRAN GmbH  
 Austraße 72  
 74076 Heilbronn  
 Germany  
 Tel. +49 7131 9815-0  
 Fax +49 7131 9815-355  
 info@wolffkran.de

# WOLFF 7534.16 clear US

### Main Components

30 m (98') basic jib with trolley gear. Extensions up to 75 m (246') radius in 2.5 m (8') steps. Slewing frame with two slewing gears, slew bearing with central lubrication unit and slipping system, operator cabin station with control cabinet. Counterjib with hoisting platform and counterweights.

### Drive Technique

All drives frequency controlled squirrel cage motors, fully thermal protected. Hoisting winches Hw 845 FU or Hw 875 FU. Automatic re-reveing device (from 2-fall to 4-fall operation). Two slewing gears with electrically operated weathervaning device. Automatic windforce compensation controls. Trolley gear.

### Electrical Equipment

Multivoltage equipment for supplies 480 V Y / 277 V 60 Hz. Electronic safety crane controls with bus technology. Incremental absolute encoders for all operating movements. Electronic load measuring device at basic jib section. Multilingual graphic display showing information to operator, both operational and diagnostics.

### Safety Devices

Electronic overload protection with WOLFFBoost. Increased load moment limitation due to automatic hoist speed reduction. Menu guided setting of overload protection system and of all limiters from operator's cabin. Working space limiter. Anti-collision interface. WOLFFLink data transfer System. Trolley rope breakage safety device.

### Tower Elements, Climbing Device

Tower configuration of WOLFF system tower elements. WOLFF slug bolt connection. Detachable hydraulic WOLFF external climber KWH 20.3.1 and KWH 20.6.1 or the internal climber KSH 20 SH.

### Undercarriage UW, Travelling Cross Frame KRF

WOLFF undercarriage UW can be used with gauge from 6.0 m up to 8.0 m (20' - 26') or travelling cross frame KRF with 6.0 m up to 10.0 m (20' - 33').

### Cross Frame Element KRE, Cross Frame KR

For stationary installation. KRE elements can be modified to UW. Cross frames KR can be modified to KRF.

### Power Requirements and hook paths (Slewing part)

66 kVA (Hw 845 FU),  
hook path 190 m (623') in 2-fall operation  
hook path 95 m (312') in 4-fall operation.

93 kVA (Hw 875 FU),  
hook path 460 m (1509') in 2-fall operation  
hook path 230 m (755') in 4-fall operation.

Mechanisms - WOLFF 7534.16 clear US - (Hw 845 FU)

Motor [kW] (hp)	45 (60)	45 (60)	9.0 (12)	2 x 6.0 (2 x 8)	2 x 5.5 (2 x 7.4)	
Speed	0 - 1.3 t (0 - 2866 lb) 0 ... 115 m/min (0 ... 377 ft/min) stepless 0 - 8.3 t (0 - 18300 lb) 0 ... 26 m/min (0 ... 85 ft/min)	0 - 3.4 t (0 - 7496 lb) 0 ... 58 m/min (0 ... 190 ft/min) stepless 0 - 16.5 t (0 - 36380 lb) 0 ... 14 m/min (0 ... 46 ft/min)	0 - 3.0 t (0 - 6614 lb) 0 ... 100 m/min (0 ... 328 ft/min) stepless 0 - 8.3 t (0 - 18300 lb) 0 ... 65 m/min (0 ... 213 ft/min)	0 - 3.0 t (0 - 6614 lb) 0 ... 100 m/min (0 ... 328 ft/min) stepless 0 - 16.5 t (0 - 36380 lb) 0 ... 32 m/min (0 ... 105 ft/min)	0.80 min <sup>-1</sup>	25.0 m/min (82 ft/min)
hook path [m] (ft)	190 (623)	95 (312)				

Mechanisms - WOLFF 7534.16 clear US - (Hw 875 FU)

Motor [kW] (hp)	75 (100)	75 (100)	9.0 (12)	2 x 6.0 (2 x 8)	2 x 5.5 (2 x 7.4)	
Speed	0 - 1.5 t (0 - 3307 lb) 0 ... 185 m/min (0 ... 607 ft/min) stepless 0 - 8.3 t (0 - 18300 lb) 0 ... 44 m/min (0 ... 144 ft/min)	0 - 3.6 t (0 - 7937 lb) 0 ... 94 m/min (0 ... 308 ft/min) stepless 0 - 16.5 t (0 - 36380 lb) 0 ... 23 m/min (0 ... 76 ft/min)	0 - 3.0 t (0 - 6614 lb) 0 ... 100 m/min (0 ... 328 ft/min) stepless 0 - 8.3 t (0 - 18300 lb) 0 ... 65 m/min (0 ... 213 ft/min)	0 - 3.0 t (0 - 6614 lb) 0 ... 100 m/min (0 ... 328 ft/min) stepless 0 - 16.5 t (0 - 36380 lb) 0 ... 32 m/min (0 ... 105 ft/min)	0.80 min <sup>-1</sup>	25.0 m/min (82 ft/min)
hook path [m] (ft)	460 (1509)	230 (755)				

Load Data [t] (lb) - WOLFF 7534.16 clear US - BOOST

Jib radius [m] (ft)	20.0 (65' 7")	25.0 (82' 0")	30.0 (98' 5")	35.0 (114' 10")	40.0 (131' 3")	45.0 (147' 8")	50.0 (164' 1")	55.0 (180' 7")	60.0 (196' 10")	65.0 (212' 5")	70.0 (228' 8")	75.0 (245' 1")
75.0 (246')	8.3 (18300)	8.3 (18300)	8.3 (18300)	8.3 (18300)	7.4 (16340)	6.4 (14180)	5.7 (12450)	5.0 (11040)	4.5 (9870)	4.0 (8870)	3.6 (8020)	3.3 (7270)
72.5 (238')	8.3 (18300)	8.3 (18300)	8.3 (18300)	7.7 (17150)	6.7 (14770)	5.9 (12940)	5.2 (11530)	4.7 (10230)	4.2 (9230)	3.8 (8390)	3.4 (7550)	3.1 (6810)
70.0 (230')	8.3 (18300)	8.3 (18300)	8.3 (18300)	8.2 (18010)	7.1 (15630)	6.3 (13790)	5.6 (12270)	5.0 (10980)	4.5 (9980)	4.1 (8980)	3.7 (8140)	3.4 (7400)
67.5 (221')	8.3 (18300)	8.3 (18300)	8.3 (18300)	8.3 (18300)	7.3 (16040)	6.4 (14170)	5.7 (12610)	5.1 (11300)	4.6 (10200)	4.2 (9200)	3.8 (8400)	3.5 (7700)
65.0 (213')	8.3 (18300)	8.3 (18300)	8.3 (18300)	8.3 (18300)	7.7 (17150)	6.7 (14770)	6.0 (13360)	5.4 (12060)	4.9 (10960)	4.5 (9960)	4.1 (8960)	3.8 (8360)
62.5 (205')	8.3 (18300)	8.3 (18300)	8.3 (18300)	8.3 (18300)	7.7 (17150)	6.8 (15020)	6.1 (13380)	5.5 (12000)	5.0 (10800)	4.6 (9800)	4.2 (8800)	3.9 (8100)
60.0 (200')	8.3 (18300)	8.3 (18300)	8.3 (18300)	8.3 (18300)	7.8 (17300)	6.9 (15100)	6.2 (13700)	5.6 (12400)	5.1 (11100)	4.7 (10100)	4.3 (9100)	4.0 (8400)
57.5 (189')	8.3 (18300)	8.3 (18300)	8.3 (18300)	8.3 (18300)	8.0 (17500)	7.0 (15300)	6.3 (13900)	5.7 (12600)	5.2 (11300)	4.8 (10300)	4.4 (9300)	4.1 (8600)
55.0 (180')	8.3 (18300)	8.3 (18300)	8.3 (18300)	8.3 (18300)	8.1 (17800)	7.2 (15700)	6.4 (14070)	5.8 (12800)	5.3 (11500)	4.9 (10500)	4.5 (9500)	4.2 (8800)
52.5 (172')	8.3 (18300)	8.3 (18300)	8.3 (18300)	8.3 (18300)	8.3 (18300)	7.4 (16100)	6.6 (14500)	6.0 (13200)	5.5 (11900)	5.1 (10900)	4.7 (10100)	4.4 (9400)
50.0 (164')	8.3 (18300)	8.3 (18300)	8.3 (18300)	8.3 (18300)	8.3 (18300)	7.4 (16250)	6.7 (14750)	6.1 (13450)	5.6 (12150)	5.2 (11150)	4.8 (10150)	4.5 (9450)
47.5 (156')	8.3 (18300)	8.3 (18300)	8.3 (18300)	8.3 (18300)	8.3 (18300)	8.3 (18300)	7.4 (16250)	6.8 (14900)	6.2 (13600)	5.7 (12300)	5.3 (11300)	4.9 (10300)
45.0 (148')	8.3 (18300)	8.3 (18300)	8.3 (18300)	8.3 (18300)	8.3 (18300)	8.3 (18300)	8.3 (18300)	7.4 (16250)	6.8 (14900)	6.2 (13600)	5.7 (12300)	5.3 (11300)
42.5 (139')	8.3 (18300)	8.3 (18300)	8.3 (18300)	8.3 (18300)	8.3 (18300)	8.3 (18300)	8.3 (18300)	7.4 (16250)	6.8 (14900)	6.2 (13600)	5.7 (12300)	5.3 (11300)
40.0 (131')	8.3 (18300)	8.3 (18300)	8.3 (18300)	8.3 (18300)	8.3 (18300)	8.3 (18300)	8.3 (18300)	7.4 (16250)	6.8 (14900)	6.2 (13600)	5.7 (12300)	5.3 (11300)
37.5 (123')	8.3 (18300)	8.3 (18300)	8.3 (18300)	8.3 (18300)	8.3 (18300)	8.3 (18300)	8.3 (18300)	7.4 (16250)	6.8 (14900)	6.2 (13600)	5.7 (12300)	5.3 (11300)
35.0 (115')	8.3 (18300)	8.3 (18300)	8.3 (18300)	8.3 (18300)	8.3 (18300)	8.3 (18300)	8.3 (18300)	7.4 (16250)	6.8 (14900)	6.2 (13600)	5.7 (12300)	5.3 (11300)
32.5 (107')	8.3 (18300)	8.3 (18300)	8.3 (18300)	8.3 (18300)	8.3 (18300)	8.3 (18300)	8.3 (18300)	7.4 (16250)	6.8 (14900)	6.2 (13600)	5.7 (12300)	5.3 (11300)
30.0 (99')	8.3 (18300)	8.3 (18300)	8.3 (18300)	8.3 (18300)	8.3 (18300)	8.3 (18300)	8.3 (18300)	7.4 (16250)	6.8 (14900)	6.2 (13600)	5.7 (12300)	5.3 (11300)