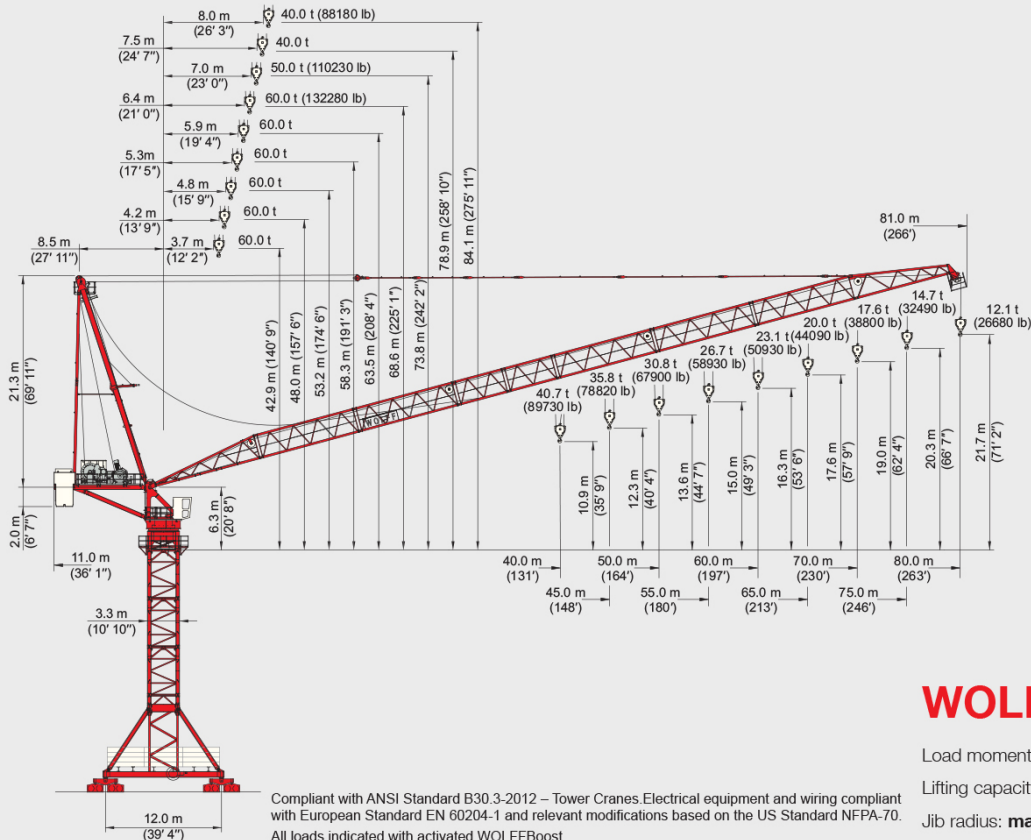




WOLFFKRAN



WOLFF 1250 B US

Load moment: max. 15000 kNm

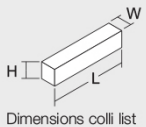
Lifting capacity: max. 60.0 t (132280 lb)

Jib radius: max. 80.0 m (263')



WOLFF 1250 B US - Colli List

Pos.	Pcs.	Description	Colli	Length [m] (ft)	Width [m] (ft)	Height [m] (ft)	Weight [kg] (lb)	Volume [m³] (ft³)
1	1	Tower top upper part		11.90 (39' 1")	2.50 (8' 2")	2.82 (9' 3")	13100 (28880)	83.90 (2962.9)
2	1	Tower top bracing		10.48 (34' 5")	0.99 (3' 3")	0.49 (1' 7")	2900 (6393)	5.08 (179.4)
3	1	Tower top lower part		3.33 (10' 11")	3.79 (12' 5")	3.53 (11' 7")	23700 (52249)	44.55 (1573.27)
4	1	Connection frame		4.98 (16' 4")	2.54 (8' 4")	2.80 (9' 2")	7300 (16094)	35.41 (1250.49)
5	1	Cabin attachment		3.58 (11' 9")	2.23 (7' 4")	0.56 (1' 10")	560 (1235)	4.47 (157.86)
		Operator's cabin		2.26 (7' 5")	1.45 (4' 9")	2.30 (7' 7")	940 (2072)	7.54 (266.27)
6	1	Counterjib		9.81 (32' 2")	2.50 (8' 2")	1.25 (4' 1")	8500 (18739)	30.66 (1082.75)
7	1	Ew 16110 FU Machinery platform		2.03 (6' 8")	2.23 (7' 4")	2.50 (8' 2")	6200 (13669)	11.32 (399.76)
8	1	Hw 40132 FU Machinery platform with Ø 32 mm hoist rope (1000 m = 5000 kg (3281' = 11023 lb))		2.60 (8' 6")	4.85 (15' 11")	2.39 (7' 10")	17500 (38581)	30.14 (1064.39)
9	1	Box (small parts)		0.63 (2' 1")	0.50 (1' 8")	0.38 (1' 3")	100 (220)	1.12 (39.55)
10	1	Standard railings		2.60 (8' 6")	1.10 (3' 7")	0.65 (2' 2")	300 (661)	1.86 (65.69)
11	1	Jib element 1		11.89 (39' 0")	2.55 (8' 4")	2.51 (8' 3")	4400 (9700)	76.10 (2687.45)
12	1	Jib element 2		10.59 (34' 9")	2.03 (6' 8")	2.50 (8' 2")	3100 (6834)	53.74 (1897.81)
13	1	Jib element 3		10.59 (34' 9")	2.03 (6' 8")	2.50 (8' 2")	3200 (7055)	53.74 (1897.81)
14	1	Jib element 4		5.41 (17' 9")	2.03 (6' 8")	2.50 (8' 2")	1600 (3527)	27.46 (969.74)
15	1	Jib element 5		5.41 (17' 9")	2.03 (6' 8")	2.50 (8' 2")	1600 (3527)	27.46 (969.74)
16	1	Jib element 6		10.59 (34' 9")	2.03 (6' 8")	2.50 (8' 2")	2600 (5732)	53.74 (1897.81)
17	1	Jib element 7		10.59 (34' 9")	2.03 (6' 8")	2.50 (8' 2")	2500 (5512)	53.74 (1897.81)
18	1	Jib element 8		11.13 (36' 6")	2.03 (6' 8")	2.52 (8' 3")	3800 (8377)	56.94 (2010.82)
				1.08 (3' 7")	0.34 (1' 1")	1.99 (6' 6")	600 (1323)	0.73 (25.78)
19		Hook block		1.20 (3' 11")	0.40 (1' 4")	1.99 (6' 6")	1000 (2205)	0.96 (33.9)
				1.20 (3' 11")	0.50 (1' 8")	1.99 (6' 6")	1500 (3307)	1.20 (42.38)
20	1	Braces		10.58 (34' 9")	0.74 (2' 5")	0.27 (0' 11")	3200 (7055)	2.11 (74.51)



WOLFFKRAN GmbH
 Austraße 72
 D-74076 Heilbronn
 Tel. +49 7131 9815-0
 Fax +49 7131 9815-355
 info@wolffkran.de
 www.wolffkran.de

61000465_01/2017

All rights reserved regarding technical and content changes.



WOLFF 1250 B US

Main Components

40 m (131') basic jib, extensions up to 80 m (263') in 5 m (16') steps, tower top with access, slewing frame with cabin, two slewing gears, ball race bearing with central lubrication unit and slip ring system. Counter jib with hoist and luffing winch, switch cabinet and counterweights.

Drive Technique

All drives with frequency controlled squirrel cage motors, fully terminal protected. Hoisting winch Hw 40132 FU, slewing drive with electrically operated weathervaning device. Automatic wind force compensation controls. Luffing winch Ew 16110 FU.

Electrical Equipment

Multivoltage equipment for supplies of 480 V Y / 277 V 60 Hz. Electronic safety crane controls with bus technology. Incremental absolute encoders for all operating movements. Electronic load measuring device. Multilingual graphic display showing information to operator, both operational and diagnostics.

Safety Devices

Crane is complete with electronic overload protection system. Increased load moment limitation due to automatic hoist speed reduction. Menu guided setting of overload protection system and of all limiters from operator's cabin. Working space limiter, anti-collision interface. Electronic controlled level luffing.

In series with

Teleservice module and wind indicator.

Tower Elements, Climbing Device

Tower configuration with WOLFF system tower element TV 33. Hydraulic WOLFF system climbing device KWH 33.

Undercarriage UW, Crossframe KRE

As travelling version on WOLFF system undercarriage UW 4120 with gauge of 12.0 m (39'). For stationary installations on KRE 4120 (Base 12 x 12 m (39' x 39')). KRE element can be modified to UW. Alternative on foundation anchors typ G 33-2000.

Power Requirements and hook paths (Slewing part)

241 kVA, hook path for 400 m (1312') tower height in 2-fall operation.

Operating Speeds Hw 40132 FU

Motor [kW] (hp)	132 (177)	132 (177)	132 (177)	110 (147)	2 x 11 (2 x 15)	8 x 5.5 (8 x 7.4)
Speed	0 - 2.9 t (0 - 6390 lb) 0 ... 190 m/min (0 ... 623 ft/min) stepless 0 - 20.0 t (0 - 44090 lb) 0 ... 33 m/min (0 ... 108 ft/min)	0 - 6.2 t (0 - 13670) 0 ... 95 m/min (0 ... 312 ft/min) stepless 0 - 40.0 t (0 - 88180 lb) 0 ... 17 m/min (0 ... 56 ft/min)	0 - 9.3 t (0 - 20500) 0 ... 63 m/min (0 ... 207 ft/min) stepless 0 - 60.0 t (0 - 132280 lb) 0 ... 11 m/min (0 ... 36 ft/min)	2.5 - 3.5 min	0.7 min ⁻¹	30 m/min (98 ft/min)
Hook path [m] (ft)	990 (3248)	495 (1624)	330 (1083)			

Load Data [t] (lb) · WOLFF 1250 B US · BOOST

Operating radius [m] (ft)	Load capacity [t] (lb)											
	30.0 (86' 5")	35.0 (114' 10")	40.0 (131' 3")	45.0 (147' 5")	50.0 (164' 1")	55.0 (180' 5")	60.0 (196' 10")	65.0 (213' 3")	70.0 (229' 5")	75.0 (246' 1")	80.0 (262' 5")	
Jib length [m] (ft)	80.0 (262') 26' 3" - 183' 7"	20.0 (44090)	20.0 (44090)	20.0 (44090)	20.0 (44090)	20.0 (44090)	18.2 (40180)	16.4 (36303)	14.7 (32460)	13.3 (29380)	12.1 (26680)	
	75.0 (246') 24' 7" - 196' 2"	20.0 (44090)	20.0 (44090)	20.0 (44090)	20.0 (44090)	20.0 (44090)	19.9 (43880)	17.9 (39500)	16.2 (35750)	14.7 (32490)		
	70.0 (230') 23' 0" - 208' 6"	20.0 (44090)	20.0 (44090)	20.0 (44090)	20.0 (44090)	20.0 (44090)	20.0 (44090)	19.4 (42800)	17.6 (38800)			
	65.0 (213') 21' 0" - 213' 3"	20.0 (44090)	20.0 (44090)	20.0 (44090)	20.0 (44090)	20.0 (44090)	20.0 (44090)	20.0 (44090)				
	60.0 (197') 19' 4" - 196' 10"	20.0 (44090)	20.0 (44090)	20.0 (44090)	20.0 (44090)	20.0 (44090)	20.0 (44090)	20.0 (44090)				
	55.0 (180') 17' 5" - 192' 5"	20.0 (44090)	20.0 (44090)	20.0 (44090)	20.0 (44090)	20.0 (44090)	20.0 (44090)					
	50.0 (164') 15' 9" - 164' 1"	20.0 (44090)	20.0 (44090)	20.0 (44090)	20.0 (44090)	20.0 (44090)						
	45.0 (148') 13' 9" - 147' 8"	20.0 (44090)	20.0 (44090)	20.0 (44090)	20.0 (44090)							
	40.0 (131') 12' 2" - 131' 3"	20.0 (44090)	20.0 (44090)	20.0 (44090)								
	Jib length [m] (ft)	80.0 (262') 26' 3" - 103' 1"	40.0 (88180)	35.1 (77440)	29.8 (65620)	22.3 (49070)	19.5 (43050)	17.3 (38040)	15.3 (33790)	13.7 (30160)	12.3 (27010)	11.0 (24260)
75.0 (246') 24' 7" - 108' 7"		40.0 (88180)	37.4 (82500)	31.9 (70210)	27.5 (60310)	21.2 (46750)	18.8 (41540)	16.8 (37130)	15.1 (33350)	13.6 (30070)		
70.0 (230') 23' 0" - 114' 0"		40.0 (88180)	39.7 (87430)	33.9 (74670)	29.4 (64740)	25.8 (56790)	22.8 (50300)	20.4 (44880)	18.3 (40300)	16.5 (36380)		
65.0 (213') 21' 0" - 117' 10"		40.0 (88180)	40.0 (88180)	35.4 (77950)	30.8 (67970)	27.2 (59990)	24.2 (53460)	21.8 (48020)	19.7 (43410)			
60.0 (197') 19' 4" - 121' 8"		40.0 (88180)	40.0 (88180)	36.8 (81050)	32.2 (71010)	28.6 (62980)	25.6 (56410)	23.1 (50930)				
55.0 (180') 17' 5" - 125' 5"		40.0 (88180)	40.0 (88180)	38.1 (83920)	33.5 (73730)	29.8 (65990)	26.7 (58930)					
50.0 (164') 15' 9" - 129' 1"		40.0 (88180)	40.0 (88180)	39.3 (86610)	34.6 (76220)	30.8 (67900)						
45.0 (148') 13' 9" - 132' 10"		40.0 (88180)	40.0 (88180)	40.0 (88180)	35.8 (78820)							
40.0 (131') 12' 2" - 131' 3"		40.0 (88180)	40.0 (88180)	40.0 (88180)								
Jib length [m] (ft)		70.0 (230') 23' 0" - 92' 8"	46.6 (102730)	38.8 (85540)	33.0 (72640)	28.4 (62610)	24.8 (54580)	21.8 (48020)	19.3 (42550)	17.2 (37920)	15.4 (33950)	
	65.0 (213') 21' 0" - 80' 6"	47.9 (105530)	40.1 (88410)	34.3 (75570)	29.7 (65570)	26.1 (57590)	23.2 (51040)	20.7 (45600)	18.6 (40990)			
	60.0 (197') 19' 4" - 92' 5"	49.4 (108800)	41.5 (91580)	35.7 (78650)	31.1 (68600)	27.5 (60570)	24.5 (53990)	22.0 (48500)				
	55.0 (180') 17' 5" - 94' 3"	50.7 (111840)	42.9 (94450)	36.9 (81400)	32.3 (71260)	28.6 (63140)	25.6 (56510)					
	50.0 (164') 15' 9" - 86' 2"	52.0 (114720)	44.1 (97130)	38.1 (83940)	33.4 (73690)	29.7 (65470)						
	45.0 (148') 13' 9" - 88' 1"	53.4 (117690)	45.4 (99990)	39.3 (86710)	34.7 (76380)							
	40.0 (131') 12' 2" - 90' 0"	54.8 (120710)	46.7 (103000)	40.7 (89730)								

WOLFF-Boost

With the WOLFF-Boost function, the load is allowed to exceed the load torque range specified for the lifting capacities by up to 10%. This is, however, subject to the restriction that hoisting gear and luffing gear must only be moved alternately.