



GROVE

by **Manitowoc**

LOAD CHARTS GRT8090

**85% STABILITY
ON OUTRIGGERS
75% STABILITY
ON RUBBER**

235803
SERIAL NUMBER





TABLE OF CONTENTS

| | |
|--|-----|
| GENERAL NOTES | 4-5 |
| WIND REDUCTION FACTORS / LINE PULL AND REEVING INFORMATION | 5 |
| WEIGHT REDUCTIONS / HOIST DATA | 6 |
| RIGGING INFORMATION / LOADING & UNLOADING FROM TRANSPORT | 7 |
| RANGE DIAGRAM WITH 33-56' FOLDING EXTENSION | 8 |
| RANGE DIAGRAM WITH 33-56' EXTENSION + 20' INSERT | 9 |
| LIFTING AREA DIAGRAMS | 10 |

WITH 27000 lb COUNTERWEIGHT

| | |
|---|-------|
| ON OUTRIGGERS FULLY EXTENDED | 12-13 |
| ON OUTRIGGERS 50% EXTENDED | 14-15 |
| ON OUTRIGGERS 0% EXTENDED (fully retracted) | 16-17 |
| FOLDING EXTENSION WITH 140' MAIN BOOM - MODE X | 18 |
| FOLDING EXTENSION WITH 140' MAIN BOOM - MODE M | 19 |
| FOLDING EXTENSION WITH 154' MAIN BOOM - MODE X & M | 20 |
| FOLDING EXTENSION WITH 154' MAIN BOOM + 20' INSERT - MODE X & M | 21 |

WITH 22000 lb COUNTERWEIGHT

| | |
|---|-------|
| ON OUTRIGGERS FULLY EXTENDED | 22-23 |
| ON OUTRIGGERS 50% EXTENDED | 24-25 |
| ON OUTRIGGERS 0% EXTENDED (fully retracted) | 26-27 |
| FOLDING EXTENSION WITH 140' MAIN BOOM - MODE X | 28 |
| FOLDING EXTENSION WITH 140' MAIN BOOM - MODE M | 29 |
| FOLDING EXTENSION WITH 154' MAIN BOOM - MODE X & M | 30 |
| FOLDING EXTENSION WITH 154' MAIN BOOM + 20' INSERT - MODE X & M | 31 |

| | |
|------------------------|--------------|
| ON RUBBER | 32-33 |
|------------------------|--------------|

| | |
|----------------------|----|
| TIRE INFLATION | 34 |
|----------------------|----|



NOTES FOR LIFTING CAPACITIES

GENERAL:

1. Rated loads as shown on lift chart pertain to this machine as originally manufactured and equipped. Modifications to the machine or use of optional equipment other than that specified can result in a reduction of capacity.
2. Construction equipment can be hazardous if improperly operated or maintained. Operation and maintenance of this machine shall be in compliance with the information in the Operator's and Safety Handbook, Service Manual, and Parts Manual supplied with this machine. If these manuals are missing, order replacements from the manufacturer through the distributor.
3. The operator and other personnel associated with machine shall fully acquaint themselves with the latest American National Safety Standards (ASME/ANSI) for cranes.

SETUP:

1. The machine shall be level and on a firm supporting surface. Depending on the nature of the supporting surface, it may be necessary to have structural supports under the outrigger floats or tires to spread the load to a larger bearing surface.
2. For outrigger operation, all outriggers shall be properly extended with tires raised free of crane weight before operating the boom or lifting loads.
3. When machine is equipped with center front stabilizer, the front stabilizer shall be set in accordance with instructions in Operator's & Safety Handbook.
4. When equipped with removable and/or extendible counterweight, the proper counterweight shall be installed and fully extended before and during operation.
5. Tires shall be inflated to the recommended pressure before lifting on rubber.
6. With certain boom and hoist tackle combinations, maximum capacities may not be obtainable with standard cable lengths.
7. Unless approved by the crane manufacturer, do not travel with boom extension or jib erected. Refer to Operator's and Safety Handbook for job-site travel information.

OPERATION:

1. Rated loads at rated radius shall not be exceeded. Do not attempt to tip the machine to determine allowable loads. For clamshell, grapple, magnet or concrete bucket operation, weight of component and load must not exceed 80% of rated lifting capacities.
2. All rated loads have been tested to and meet the requirements of SAE J1063 - Cantilevered Boom Crane Structures - Method of Test, and do not exceed 85% of the tipping load on outriggers fully extended. Capacities on outriggers 50% extended and 0% extended (fully retracted) correspond to SAE J1289 (Test Load = $1.25P + 0.1A$). 0.1A represents one-tenth (0.10) of the total boom weight reduced to the boom point. Loads are also determined by SAE J765 Crane Stability Test Code.
3. Rated loads include the weight of hookblock, slings and auxiliary lifting devices and their weights shall be subtracted from the listed rating to obtain the net load to be lifted. When more than the minimum required parts of line needed to pick the load are used, the additional rope weight as measured from the lower sheaves of the main boom nose shall be considered part of the load to be lifted. When both the hook block and headache ball are reeved, the lifting device that is NOT in use, including the line as measured from the lower sheave(s) of the nose supporting the unused device shall be considered part of the load.
4. Load ratings are based on freely suspended loads. No attempt shall be made to move a load horizontally on the ground in any direction.
5. The "maximum permissible wind speed" referenced in the capacity charts is the "3-second wind gust speed" measured at the boom tip height. These permissible wind speeds are based on the "wind resistance area of load" equal to 0.0059 square feet per pound of load. For larger "wind resistance area of load" refer to Operator's Manual for allowable reduced wind speeds. The maximum permissible in-service wind speed is 30 mph. Only with main boom on fully extended outriggers, lifting the load is allowed at appropriately reduced capacity when the wind speed is greater than 30 mph and less than or equal to 45 mph. Refer to Capacity Reduction Factors on page 5. For machines not in-service, the main boom should be retracted and lowered with the swing brake set when wind speeds (3-second gust speed at boom tip height) exceed 45 mph.
6. Rated loads are for lift crane service only.
7. Do not operate at a radius or boom length where capacities are not listed. At these positions, the machine may overturn without any load on the hook.
8. The maximum load which can be telescoped is not definable because of variations in loadings and crane maintenance, but it is safe to attempt retraction and extension of the boom within the limits of the capacity chart.
9. When the boom length or lift radius or both are between values listed, the smallest load shown at either the next larger radius or next longer or shorter boom length shall be used.
10. For safe operation, the user shall make due allowances for his particular job conditions, such as: soft or uneven ground, out of level conditions, high winds, side loads, pendulum action, jerking or sudden stopping of loads, experience of personnel, two machine (tandem) lifts, traveling with loads, electric wires, obstacles, hazardous conditions, etc. Side pull on boom or jib is extremely dangerous.
11. Regardless of counterweight and outrigger spread configuration, no deduct is required from the main boom charts for a stowed boom extension.
12. Never handle personnel with this machine unless the requirements of the applicable national, state, and local regulations and safety codes are met.
13. Keep load handling devices a minimum of 42 inches below boom head at all times.
14. The boom angle before loading should be greater than the loaded boom angle to account for deflection.
15. Capacities for the 39.2 ft. boom length shall be lifted with boom fully retracted. If boom is not fully retracted, capacities shall not exceed those shown for the 53.6 ft. boom length.



NOTES FOR LIFTING CAPACITIES (cont'd.)

16. When operating in the "On Outriggers 50% Extended (17' spread)" mode, the outrigger beam pins must be engaged. When operating in the "On Outriggers 0% Extended (10' spread)" mode, the outrigger beams must be fully retracted. Failure to follow these precautions could result in structural damage or loss of stability of the machine.
17. Do not lift loads when boom is fully lowered. The Rated Capacity Limiter (RCL) senses pressure and will not provide warnings or lockout. The crane can become overloaded if lift cylinder(s) is fully retracted.
18. **WARNING:** Lifting with the 33 ft. extension base, with the 23 ft. extension fly either erected or folded along side of extension base, is strictly prohibited.
19. The maximum outrigger pad load is 126,200 lb.

DEFINITIONS:

1. Operating Radius: Horizontal distance from a projection of the axis of rotation to the supporting surface before loading to the center of the vertical hoist line or tackle with load applied.
2. Loaded Boom Angle (Shown in Parenthesis on Main Boom Capacity Chart): is the angle between the boom base section and the horizontal, after lifting the rated load at the rated radius with the rated boom length.
3. Working Area: Areas measured in a circular arc about the center line of rotation as shown on the working area diagram.
4. Freely Suspended Load: Load hanging free with no direct external force applied except by the lift cable.
5. Side Load: Horizontal force applied to the lifted load either on the ground or in the air.

CAPACITY REDUCTION FACTORS FOR WIND SPEED, $V(z)$, GREATER THAN 30 mph

(Only for lifting with Main Boom on Fully Extended Outriggers,
with 27,000 lb or 22,000 lb Counterweight, with or without Stowed Extension)

For wind speed (3-second gust speed at boom tip height), $V(z) > 30 \text{ mph} \leq 45 \text{ mph}$, the *Reduced Capacity* shall be calculated by multiplying the *Published Rated Capacity* by the following factors:

| $V(z) > 30 \text{ mph}$ $\leq 45 \text{ mph}$ | Main Boom Length in Feet (Mode: A, X or B) | | | | | | | | |
|--|--|------|------|------|------|-------|-------|-------|-------|
| | 39.2 | 53.6 | 68.0 | 82.4 | 96.8 | 111.1 | 125.5 | 139.9 | 154.3 |
| Factor | 0.9 | 0.8 | 0.8 | 0.8 | 0.7 | 0.7 | 0.5 | 0.4 | 0.4 |

Wind Resistance Area of Load, $Awr_{(load)}$, shall not exceed Maximum Allowable Wind Resistance Area, $Awr_{(allow)}$.

Maximum Allowable Wind Resistance Area in ft^2 , $Awr_{(allow)} = 0.0059 \times \text{Calculated Reduced Capacity}$ in lb.

Wind Resistance Area of load, $Awr_{(load)} = \text{Projected Wind Area } (Ap) \times \text{Wind Drag Coefficient } (Cd)$ for the load.

For Wind Resistance Area of load, $Awr_{(load)} > \text{Maximum Allowable Wind Resistance Area}$, $Awr_{(allow)}$ refer to guidance in the Crane Operator's Manual.

LINE PULLS AND REEVING INFORMATION

| HOISTS | CABLE SPECS. | PERMISSIBLE LINE PULLS | NOMINAL CABLE LENGTH |
|-------------|--|------------------------|----------------------|
| Main & Aux. | 3/4" (19 mm) 35x7 Class Rotation Resistant (non-rotating) Min. breaking strength 85,800 lb | 17,160 lb* | 702 ft. |
| Main & Aux. | 22 mm Synthetic K-100 Hoist Rope (ISO) Min. breaking strength 84,000 lb | 16,800 lb* | 722 ft. |

The approximate weight of 3/4" wire rope is 1.5 lb/ft.

The approximate weight of 22 mm synthetic rope is 0.21 lb/ft.

* With certain boom and hoist tackle combinations, the allowable line pull may be limited by hoist performance. Refer to Hoist Performance table for lift planning to ensure adequate hoist performance on drum rope layer required.



WEIGHT REDUCTIONS FOR LOAD HANDLING DEVICES

| | |
|--------------------------------|----------|
| AUXILIARY BOOM NOSE | 130 lb |
| HOOKBLOCKS and HEADACHE BALLS: | |
| 100 ton, 6 sheave | 1481 lb+ |
| 90 ton, 5 sheave | 1369 lb+ |
| 65/66 ton, 5 sheave | 1280 lb+ |
| 50 ton, 3 sheave | 1015 lb+ |
| 29 ton, 1 sheave | 712 lb+ |
| 25 ton, 1 sheave | 657 lb+ |
| 12 ton overhaul weight | 661 lb+ |

+Refer to rating plate for actual weight.

When lifting over swingaway and/or jib combinations, deduct total weight of all load handling devices reeved over main boom nose directly from swingaway or jib capacity.

NOTE: When operating at temperatures below -40°F, capacities shall be derated 3.6% of rated load for each degree Fahrenheit below -40°F without shock load.

| 33 FT. - 56 FT. FOLDING BOOM EXTENSION | | |
|--|-----------------------|---------------------------|
| | Without block or ball | With 648 lb overhaul ball |
| *33 ft. Extension (erected) - | 3,500 lb | 6,000 lb |
| *56 ft. Extension (erected) - | 7,300 lb | 11,500 lb |
| FOLDING EXT. WITH 6.1 m. INSERT | | |
| *56 ft. Extension (erected) - | 12,100 lb | 17,400 lb |

*Reduction of main boom capacities

(no deduct required for stowed boom extension)

NOTE: All load handling devices and boom attachments are considered part of the load and suitable allowances **MUST BE MADE** for their combined weights. Weights are for Grove furnished equipment.

HOIST PERFORMANCE

| Wire Rope Layer | Hoist line pulls | | Drum rope capacity (ft.) | |
|-----------------------|------------------|---------------|-----------------------------|-------|
| | Two speed hoist | | | |
| | Low | High | Layer | Total |
| | Available lb* | Available lb* | | |
| 1 | 23,468 | 12,957 | 108.7 | 108.7 |
| 2 | 21,553 | 11,900 | 118.4 | 227.1 |
| 3 | 19,927 | 11,003 | 128.1 | 355.2 |
| 4 | 18,530 | 10,231 | 137.7 | 492.9 |
| 5 | 17,315 | 9,560 | 147.4 | 640.3 |
| 6 | 16,250 | 8,972 | 157.1 | 797.4 |

*Refer to Line Pulls and Reeving Information table for max. lifting capacity of wire rope.

Synthetic rope layer height may vary and may reduce available line pull per layer.



RIGGING CHART

INSTALLATION AND REMOVAL OF HYDRAULIC REMOVABLE CWT

ON O/R'S FULLY EXTENDED - 360°

| Radius in feet | Main boom length in feet - RCL Code #0801 | | | | |
|---|--|-------------------|------------------|------------------|------------------|
| | 39.2 | 53.6 | 53.6 | 68.0 | 68.0 |
| Tele I | 0% | 50% | | 50% | |
| Tele II | 0% | 0% | | 17% | |
| Tele III | 0% | 0% | | 17% | |
| Tele IV | 0% | 0% | | 17% | |
| Mode | X & M | X | M | X | M |
| 8 | 180,000 (72.5) | | | | |
| 9 | 180,000 (71) | | | | |
| 10 | 172,500 (69) | 136,500 (75.5) | 56,100 (75.5) | 55,500 (78.5) | 55,500 (78.5) |
| 12 | 152,000 (66) | 136,500 (73) | 56,100 (73) | 55,500 (77) | 55,500 (77) |
| 15 | 124,500 (61) | 123,000 (69.5) | 56,100 (69.5) | 55,500 (74) | 55,500 (74) |
| 20 | 90,250 (51.5) | 89,000 (63.5) | 56,100 (63.5) | 55,500 (69.5) | 55,500 (69.5) |
| 25 | 55,600 (40) | 52,600 (57) | 52,600 (57) | 54,650 (65) | 51,800 (65) |
| 30 | 37,100 (23.5) | 34,950 (50) | 34,950 (50) | 36,850 (60) | 33,950 (60.5) |
| 35 | | 24,750 (42) | 24,750 (42) | 26,500 (55) | 23,600 (55) |
| 40 | | 17,850 (32) | 17,850 (32) | 19,800 (49) | 16,900 (49.5) |
| 45 | | 12,750 (16.5) | 12,750 (16.5) | 15,100 (43) | 12,150 (43.5) |
| Minimum boom angle (°) for indicated length (no load) | | | | | 0 |
| Maximum boom length (ft.) at 0° boom angle (no load) - X and M modes | | | | | 68.0 |

NOTE: () Boom angles are in degrees.
#RCL operating code. Refer to RCL manual for
operating instructions.

| Boom angle | Lifting capacities at 0° boom angle | | | | |
|---------------|-------------------------------------|------------------|------------------|-----------------|-----------------|
| | 39.2 | 53.6 | 53.6 | 68.0 | 68.0 |
| 0° | 28,350 (31.7) | 11,800 (46.1) | 11,800 (46.1) | 6,200 (60.5) | 3,270 (60.5) |

NOTE: () Reference radii in feet. 80093668

ON RUBBER

NO COUNTERWEIGHT

FOR LOADING AND UNLOADING
MACHINE TO / FROM TRANSPORT

| Radius in feet | Main boom length in feet - RCL Code #9806 |
|-------------------|--|
| | 39.2 |
| Tele I | 0% |
| Tele II | 0% |
| Tele III | 0% |
| Tele IV | 0% |
| Mode | X & M |
| 12 | 5,400 (66) |
| 15 | 5,400 (61) |
| 20 | 5,400 (52) |
| 25 | 5,400 (42) |
| 30 | 5,400 (25) |

NOTE: () Boom angles are in degrees.
#RCL operating code. Refer to RCL
manual for operating instructions.

| Boom angle | Lifting capacities at 0° boom angle |
|---------------|--|
| | 39.2 |
| 0° | 4,070 (31.7) |

NOTE: () Reference radii in feet.

80089238

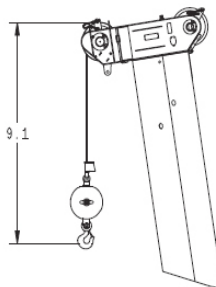
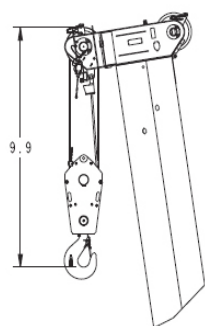
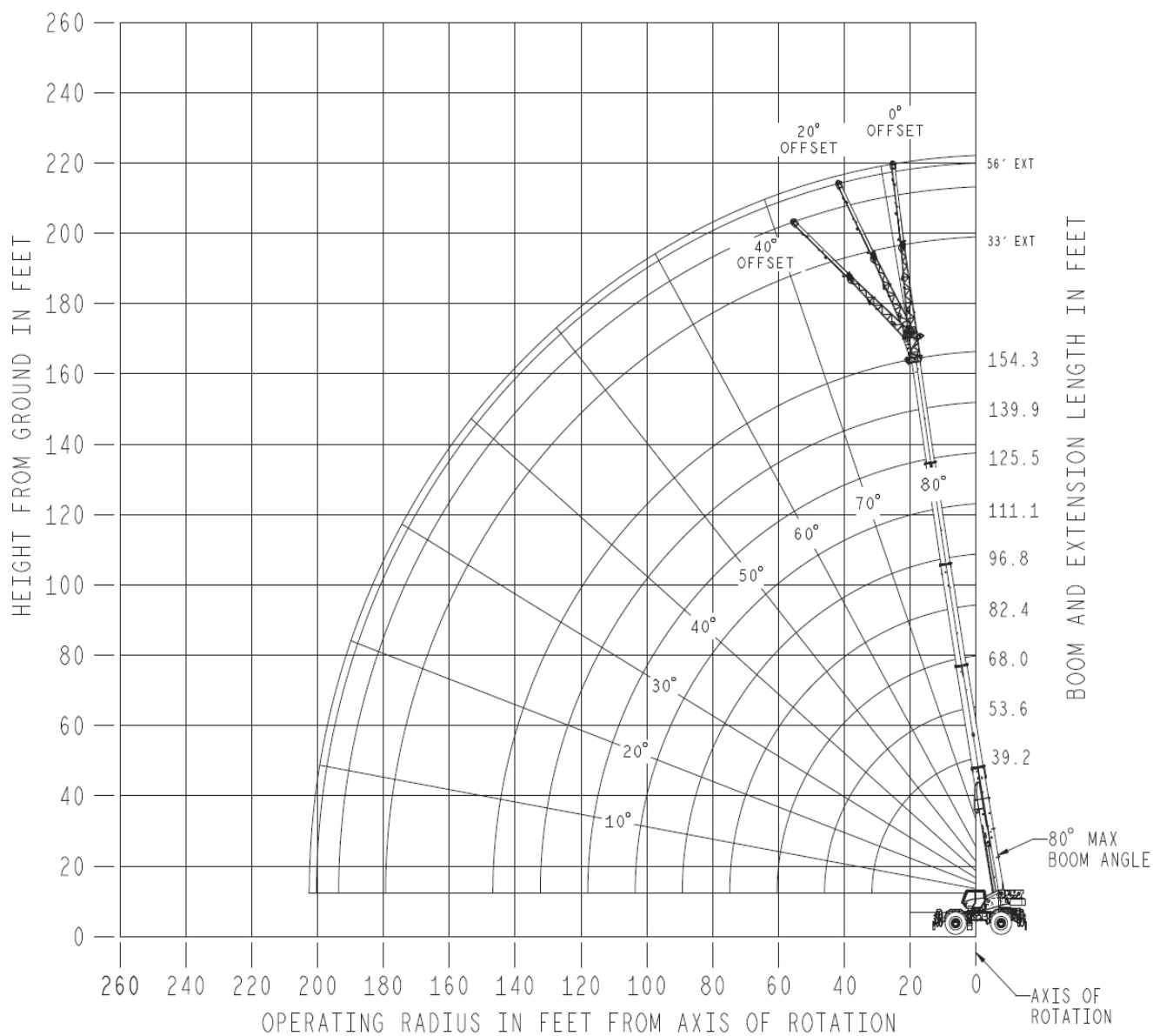
NOTE: For loading and unloading, the boom
must be centered over front of machine and
mechanical swing lock engaged.



WORKING RANGE DIAGRAM WITH BI-FOLD EXTENSION

(BOOM DEFLECTION NOT SHOWN)

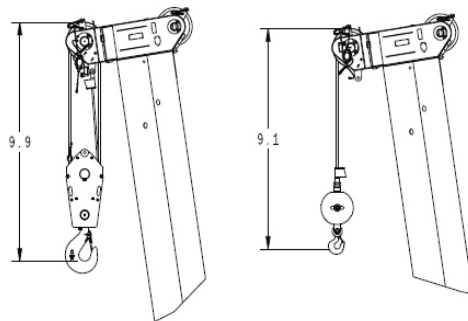
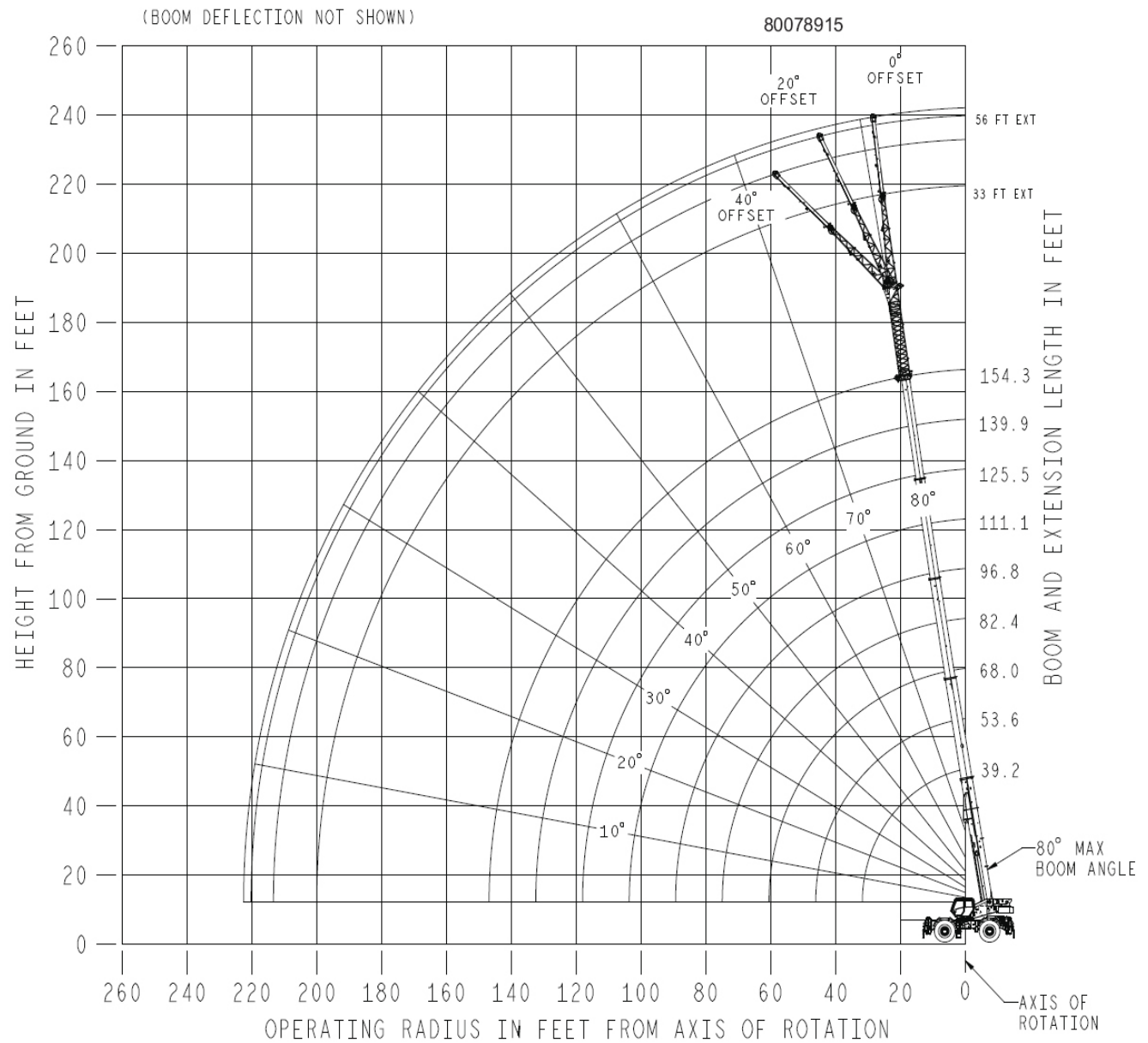
80078914



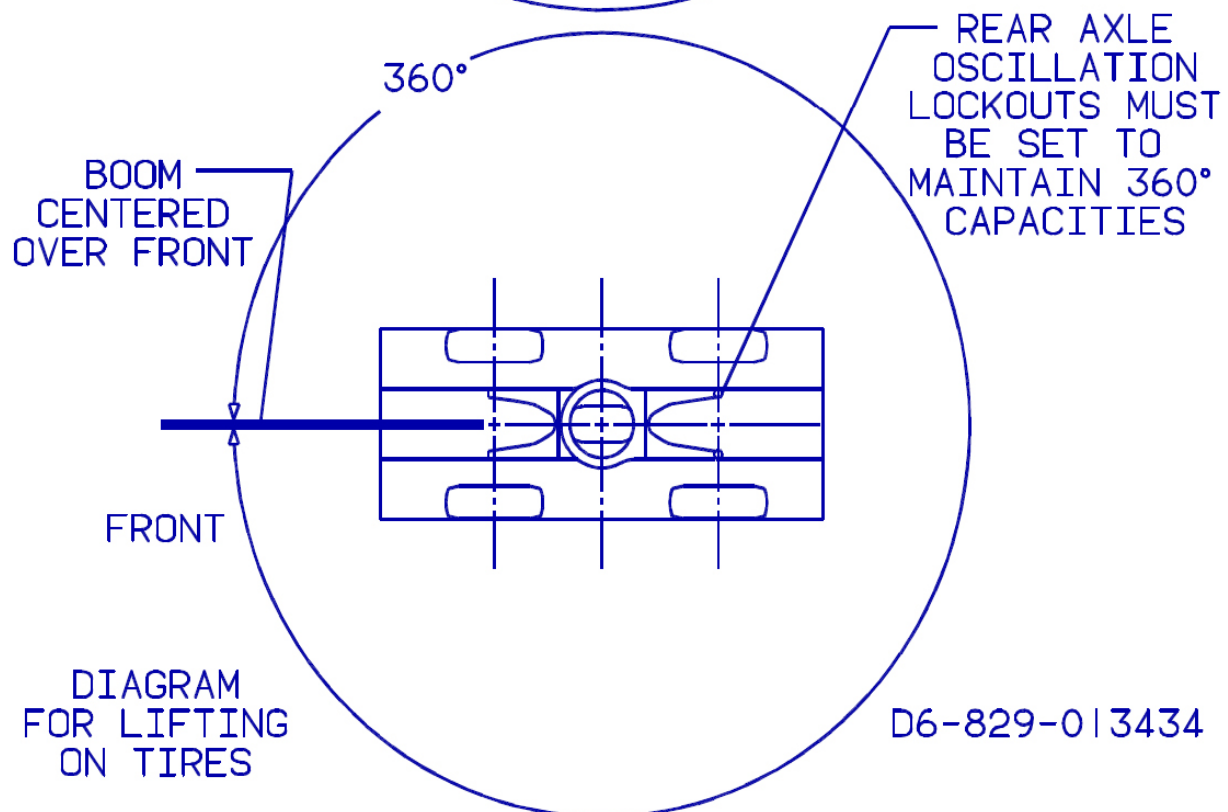
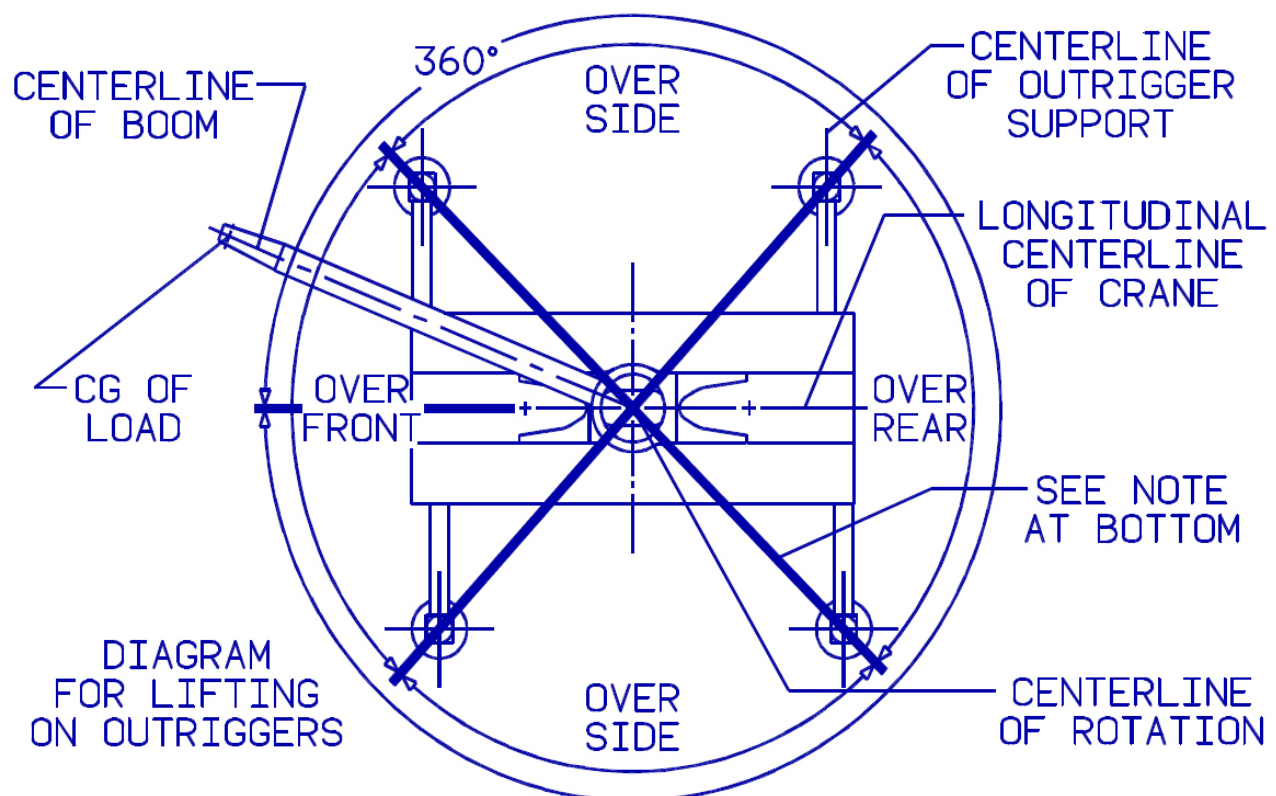
DIMENSIONS ARE FOR THE LARGEST GROVE FURNISHED HOOK BLOCK AND OVERHAUL BALL, WITH ANTI-TWO BLOCK ACTIVATED.



WORKING RANGE DIAGRAM WITH BI-FOLD EXTENSION AND INSERT



DIMENSIONS ARE FOR THE LARGEST GROVE FURNISHED HOOK BLOCK AND OVERHAUL BALL, WITH ANTI-TWO BLOCK ACTIVATED.



BOLD LINES DETERMINE THE LIMITING POSITION OF ANY LOAD FOR OPERATION WITHIN WORKING AREAS INDICATED

WORKING AREA DIAGRAM



(This page intentionally left blank.)



RATED LIFTING CAPACITIES IN POUNDS WITH MAIN BOOM AND 27000 lb CWT ON OUTRIGGERS FULLY EXTENDED - 360°

| Radius in feet | Main boom length in feet - RCL Code #0001 | | | | | | | | | | | | | | | |
|---|---|------------------|-------------------|------------------|------------------|------------------|------------------|------------------|------------------|------------------|------------------|------------------|------------------|------------------|------------------|------------------|
| | 39.2 | 53.6 | 53.6 | 53.6 | 68.0 | 68.0 | 68.0 | 68.0 | 82.4 | 82.4 | 82.4 | 82.4 | 96.8 | 96.8 | 96.8 | 96.8 |
| Tele I | 0% | 0% | 50% | | 0% | 50% | 100% | | 0% | 50% | 100% | | 0% | 50% | 100% | |
| Tele II | 0% | 17% | 0% | | 33% | 17% | 0% | | 50% | 33% | 17% | | 67% | 50% | 33% | |
| Tele III | 0% | 17% | 0% | | 33% | 17% | 0% | | 50% | 33% | 17% | | 67% | 50% | 33% | |
| Tele IV | 0% | 17% | 0% | | 33% | 17% | 0% | | 50% | 33% | 17% | | 67% | 50% | 33% | |
| Mode | A,X,B,M | A | X,B | M | A | X | B | M | A | X | B | M | A | X | B | M |
| 8 | 180,000 (72.5) | | | | | | | | | | | | | | | |
| 9 | 180,000 (71) | | | | | | | | | | | | | | | |
| 10 | 178,000 (69) | 56,100 (75.5) | 136,500 (75.5) | 56,100 (75.5) | 55,550 (78.5) | 55,500 (78.5) | 97,600 (79) | 55,500 (78.5) | *55,500 (80) | *55,500 (80) | *55,450 (80) | *55,450 (80) | | | | |
| 12 | 159,500 (66) | 56,100 (73) | 136,500 (73) | 56,100 (73) | 55,550 (77) | 55,500 (77) | 97,600 (77) | 55,500 (77) | 55,500 (79.5) | 55,500 (79.5) | 55,450 (79.5) | 55,450 (79.5) | | | | |
| 15 | 137,500 (61) | 56,100 (69.5) | 136,500 (69.5) | 56,100 (69.5) | 55,550 (74) | 55,500 (74) | 93,750 (74.5) | 55,500 (74) | 55,500 (77) | 55,500 (77) | 55,450 (77.5) | 55,450 (77.5) | 37,850 (79.5) | 55,500 (79.5) | 55,450 (79.5) | 37,850 (79.5) |
| 20 | 106,000 (51.5) | 56,100 (63.5) | 105,000 (63.5) | 56,100 (63.5) | 55,550 (69.5) | 55,500 (69.5) | 76,300 (70) | 55,500 (69.5) | 55,500 (73.5) | 55,500 (73.5) | 55,450 (74) | 55,450 (74) | 37,850 (76.5) | 55,500 (76.5) | 55,450 (76.5) | 37,850 (76.5) |
| 25 | 82,200 (40) | 56,100 (57) | 81,000 (57) | 56,100 (57) | 55,550 (65) | 55,500 (65) | 63,400 (65) | 55,500 (65) | 55,500 (70) | 55,500 (69.5) | 55,450 (70) | 55,450 (70) | 37,850 (73.5) | 55,500 (73.5) | 54,200 (73.5) | 37,850 (73.5) |
| 30 | 65,150 (23.5) | 56,100 (50) | 60,650 (50) | 56,100 (50) | 55,550 (60) | 55,500 (60) | 53,800 (60.5) | 53,800 (60.5) | 55,500 (66) | 55,500 (66) | 49,150 (66.5) | 49,150 (66.5) | 37,850 (70) | 55,500 (70) | 46,150 (70.5) | 37,850 (70) |
| 35 | | 50,250 (42) | 46,150 (42) | 46,150 (42) | 51,200 (55) | 48,150 (55) | 46,350 (55) | 46,350 (55) | 49,350 (62) | 50,050 (62) | 42,300 (62.5) | 42,300 (62.5) | 34,400 (67) | 52,100 (67) | 39,750 (67) | 34,400 (67) |
| 40 | | 39,300 (32.5) | 36,350 (32) | 36,350 (32) | 40,750 (49.5) | 38,200 (49) | 36,700 (49.5) | 36,700 (49.5) | 41,700 (58) | 39,600 (58) | 36,850 (58.5) | 36,850 (58.5) | 30,550 (63.5) | 41,650 (63.5) | 34,600 (64) | 30,550 (63.5) |
| 45 | | 31,600 (16.5) | 28,150 (16.5) | 28,150 (16.5) | 33,350 (43.5) | 31,200 (43) | 28,950 (43.5) | 28,950 (43.5) | 34,450 (53.5) | 32,300 (53.5) | 30,100 (54) | 30,100 (54) | 27,350 (60) | 33,900 (60) | 30,400 (60.5) | 27,350 (60) |
| 50 | | | | | 27,700 (36) | 25,350 (36) | 23,050 (36) | 23,050 (36) | 29,050 (49) | 26,850 (48.5) | 24,400 (49.5) | 24,400 (49.5) | 24,750 (56.5) | 28,200 (56.5) | 25,550 (57) | 24,750 (56.5) |
| 55 | | | | | 23,350 (27) | 20,600 (27) | 18,500 (27) | 18,500 (27) | 24,900 (44) | 22,650 (43.5) | 19,950 (44) | 19,950 (44) | 22,500 (53) | 23,750 (53) | 21,150 (53) | 21,150 (53) |
| 60 | | | | | 19,850 (11) | 16,850 (10.5) | 14,850 (11) | 14,850 (11) | 21,550 (38.5) | 19,250 (38) | 16,400 (38.5) | 16,400 (38.5) | 20,600 (49) | 20,250 (49) | 17,650 (49) | 17,650 (49) |
| 65 | | | | | | | | | 18,750 (31.5) | 16,400 (31.5) | 13,450 (32) | 13,450 (32) | 18,900 (45) | 17,250 (44.5) | 14,800 (45) | 14,800 (45) |
| 70 | | | | | | | | | 16,350 (23) | 14,100 (23) | 11,000 (23.5) | 11,000 (23.5) | 16,850 (40) | 14,900 (40) | 12,400 (40) | 12,400 (40) |
| 75 | | | | | | | | | | | | | 14,750 (35) | 12,850 (34.5) | 10,350 (35) | 10,350 (35) |
| 80 | | | | | | | | | | | | | 13,000 (28.5) | 11,100 (28.5) | 8,590 (28.5) | 8,590 (28.5) |
| 85 | | | | | | | | | | | | | 11,400 (20.5) | 9,510 (20) | 7,070 (20.5) | 7,070 (20.5) |
| Minimum boom angle (°) for indicated length (no load) | | | | | | | | | | | | | | | | 0 |
| Maximum boom length (ft.) at 0° boom angle (no load) - Mode A and X | | | | | | | | | | | | | | | | 125.5 |
| Maximum boom length (ft.) at 0° boom angle (no load) - Mode B and M | | | | | | | | | | | | | | | | 111.1 |

NOTE: () Boom angles are in degrees.

*This capacity is based on maximum boom angle

#RCL operating code. Refer to RCL manual for operating instructions.

NOTE: For allowable capacities while operating in 3-second wind gust speeds greater than 30 mph and up to 45 mph, refer to *Capacity Reduction Factors for wind speed (3-second gust speed) V(z) greater than 30 mph.*

| Boom angle | Lifting capacities at 0° boom angle | | | | | | | | | | | | | | | |
|---------------|-------------------------------------|------------------|------------------|------------------|------------------|------------------|-----------------|-----------------|-----------------|-----------------|-----------------|-----------------|-----------------|-----------------|-----------------|-----------------|
| | 39.2 | 53.6 | 53.6 | 53.6 | 68.0 | 68.0 | 68.0 | 68.0 | 82.4 | 82.4 | 82.4 | 82.4 | 96.8 | 96.8 | 96.8 | 96.8 |
| 0° | 28,350 (31.7) | 18,300 (46.1) | 16,000 (46.1) | 16,000 (46.1) | 13,100 (60.5) | 10,600 (60.5) | 8,410 (60.5) | 8,410 (60.5) | 9,240 (74.8) | 7,240 (74.8) | 5,390 (74.8) | 5,390 (74.8) | 6,590 (89.2) | 4,920 (89.2) | 3,380 (89.2) | 3,380 (89.2) |

NOTE: () Reference radii in feet.

Shaded area indicates optimal lift capacity within boom length sections.

80093666-1



RATED LIFTING CAPACITIES IN POUNDS WITH MAIN BOOM AND 27000 lb CWT (cont'd.) ON OUTRIGGERS FULLY EXTENDED - 360°

| Radius in feet | Main boom length in feet - RCL Code #0001 | | | | | | | | | | | |
|---|---|------------------|------------------|------------------|------------------|------------------|------------------|------------------|------------------|------------------|------------------|------------------|
| | 111.1 | 111.1 | 111.1 | 111.1 | 125.5 | 125.5 | 125.5 | 125.5 | 139.9 | 139.9 | 139.9 | 154.3 |
| Tele I | 0% | 50% | 100% | | 0% | 50% | 100% | | 50% | 100% | | 100% |
| Tele II | 83% | 67% | 50% | | 100% | 83% | 67% | | 100% | 83% | | 100% |
| Tele III | 83% | 67% | 50% | | 100% | 83% | 67% | | 100% | 83% | | 100% |
| Tele IV | 83% | 67% | 50% | | 100% | 83% | 67% | | 100% | 83% | | 100% |
| Mode | A | X | B | M | A | X | B | M | A,X | B | M | A,X,B,M |
| 15 | *26,350 (80) | *37,750 (80) | *54,500 (80) | *26,350 (80) | | | | | | | | |
| 20 | 26,350 (78.5) | 37,750 (78.5) | 54,500 (78.5) | 26,350 (78.5) | 21,650 (80) | 26,300 (80) | *37,700 (80) | 21,650 (80) | *21,600 (80) | *26,250 (80) | *21,600 (80) | |
| 25 | 26,350 (76) | 37,750 (76) | 50,600 (76) | 26,350 (76) | 21,650 (78) | 26,300 (78) | 37,700 (78) | 21,650 (78) | 21,600 (79.5) | 26,250 (79.5) | 21,600 (79.5) | *21,550 (80) |
| 30 | 26,350 (73) | 37,750 (73.5) | 43,800 (73.5) | 26,350 (73) | 21,650 (75.5) | 26,300 (75.5) | 37,700 (75.5) | 21,650 (75.5) | 21,600 (77.5) | 26,250 (77.5) | 21,600 (77.5) | 21,550 (79) |
| 35 | 26,350 (70.5) | 37,750 (70.5) | 37,950 (70.5) | 26,350 (70.5) | 21,650 (73) | 26,300 (73) | 36,300 (73) | 21,650 (73) | 21,600 (75) | 26,250 (75.5) | 21,600 (75) | 21,550 (77) |
| 40 | 26,350 (67.5) | 34,300 (68) | 33,050 (67.5) | 26,350 (67.5) | 21,650 (70.5) | 26,300 (70.5) | 31,900 (70.5) | 21,650 (70.5) | 21,600 (73) | 26,250 (73) | 21,600 (73) | 21,550 (75) |
| 45 | 24,400 (65) | 30,950 (65) | 29,100 (65) | 24,400 (65) | 21,650 (68) | 26,300 (68) | 28,100 (68) | 21,650 (68) | 21,600 (71) | 26,250 (71) | 21,600 (71) | 21,550 (73) |
| 50 | 22,000 (62) | 28,100 (62) | 25,750 (62) | 22,000 (62) | 20,050 (65.5) | 24,550 (65.5) | 24,900 (66) | 20,050 (65.5) | 21,600 (68.5) | 24,200 (69) | 21,600 (68.5) | 21,550 (71) |
| 55 | 19,900 (59) | 24,850 (59) | 22,300 (59) | 19,900 (59) | 18,100 (63) | 22,350 (63) | 22,200 (63.5) | 18,100 (63) | 20,050 (66.5) | 21,600 (66.5) | 20,050 (66.5) | 21,150 (69) |
| 60 | 18,150 (56) | 21,200 (56) | 18,800 (56) | 18,150 (56) | 16,450 (60.5) | 20,500 (60.5) | 19,400 (60.5) | 16,450 (60.5) | 18,300 (64) | 19,350 (64.5) | 18,300 (64) | 18,950 (67.5) |
| 65 | 16,600 (52.5) | 18,150 (52.5) | 15,950 (52.5) | 15,950 (52.5) | 15,000 (58) | 18,450 (58) | 16,550 (58) | 15,000 (58) | 16,750 (62) | 17,150 (62) | 16,750 (62) | 17,050 (65.5) |
| 70 | 15,250 (49) | 15,700 (49) | 13,600 (49) | 13,600 (49) | 13,700 (55) | 16,000 (55) | 14,200 (55) | 13,700 (55) | 15,400 (59.5) | 14,800 (59.5) | 14,800 (59.5) | 15,350 (63.5) |
| 75 | 14,050 (45.5) | 13,600 (45.5) | 11,650 (45.5) | 11,650 (45.5) | 12,600 (52) | 13,950 (52) | 12,200 (52) | 12,200 (52) | 14,250 (57) | 12,800 (57.5) | 12,800 (57.5) | 13,400 (61) |
| 80 | 13,000 (41.5) | 11,750 (41.5) | 9,940 (41.5) | 9,940 (41.5) | 11,600 (49) | 12,200 (49) | 10,550 (49) | 10,550 (49) | 12,600 (54.5) | 11,100 (54.5) | 11,100 (54.5) | 11,700 (59) |
| 85 | 11,950 (37) | 10,150 (37) | 8,430 (37) | 8,430 (37) | 10,700 (46) | 10,650 (45.5) | 9,080 (46) | 9,080 (46) | 11,100 (52) | 9,670 (52) | 9,670 (52) | 10,250 (56.5) |
| 90 | 10,600 (32) | 8,790 (32) | 7,110 (32) | 7,110 (32) | 9,890 (42.5) | 9,350 (42) | 7,800 (42.5) | 7,800 (42.5) | 9,820 (49) | 8,390 (49.5) | 8,390 (49.5) | 8,980 (54.5) |
| 95 | 9,440 (26) | 7,560 (26) | 5,930 (26) | 5,930 (26) | 9,150 (38.5) | 8,140 (38.5) | 6,630 (38.5) | 6,630 (38.5) | 8,680 (46) | 7,260 (46.5) | 7,260 (46.5) | 7,850 (52) |
| 100 | 8,340 (18) | 6,460 (18) | 4,890 (18) | 4,890 (18) | 8,480 (34.5) | 7,080 (34.5) | 5,600 (34.5) | 5,600 (34.5) | 7,660 (43) | 6,260 (43.5) | 6,260 (43.5) | 6,850 (49.5) |
| 105 | | | | | 7,870 (29.5) | 6,120 (29.5) | 4,680 (29.5) | 4,680 (29.5) | 6,730 (39.5) | 5,340 (40) | 5,340 (40) | 5,960 (47) |
| 110 | | | | | 7,030 (24) | 5,260 (24) | 3,850 (24) | 3,850 (24) | 5,890 (36) | 4,510 (36.5) | 4,510 (36.5) | 5,160 (44) |
| 115 | | | | | 6,270 (16) | 4,490 (16) | 3,100 (16) | 3,100 (16) | 5,130 (32) | 3,760 (32.5) | 3,760 (32.5) | 4,410 (41) |
| 120 | | | | | | | | | 4,440 (27.5) | 3,080 (28) | 3,080 (28) | 3,730 (38) |
| 125 | | | | | | | | | 3,810 (22) | 2,460 (22) | 2,460 (22) | 3,110 (34.5) |
| 130 | | | | | | | | | 3,220 (14) | 1,880 (14) | 1,880 (14) | 2,540 (30.5) |
| 135 | | | | | | | | | | | | 2,020 (26) |
| 140 | | | | | | | | | | | | 1,520 (20.5) |
| 145 | | | | | | | | | | | | 1,060 (12.5) |
| Minimum boom angle (°) for indicated length (no load) | | | | | | | | 15 | 15 | 13 | 13 | 11 |
| Maximum boom length (ft.) at 0° boom angle (no load) - Mode A and X | | | | | | | | | | | | 125.5 |
| Maximum boom length (ft.) at 0° boom angle (no load) - Mode B and M | | | | | | | | | | | | 111.1 |

NOTE: () Boom angles are in degrees.

*This capacity is based on maximum boom angle

#RCL operating code. Refer to RCL manual for operating instructions.

NOTE: For allowable capacities while operating in 3-second wind gust speeds greater than 30 mph and up to 45 mph, refer to *Capacity Reduction Factors for wind speed (3-second gust speed) V(z) greater than 30 mph*.

| Boom angle | Lifting capacities at 0° boom angle | | | | | | | | | | | |
|---------------|-------------------------------------|------------------|------------------|------------------|----------------|----------------|-------|-------|-------|-------|-------|-------|
| | 111.1 | 111.1 | 111.1 | 111.1 | 125.5 | 125.5 | 125.5 | 125.5 | 139.9 | 139.9 | 139.9 | 154.3 |
| 0° | 4,680 (103.6) | 3,230 (103.6) | 1,910 (103.6) | 1,910 (103.6) | 3,230 (118) | 1,950 (118) | | | | | | |

NOTE: () Reference radii in feet.

Shaded area indicates optimal lift capacity within boom length sections.

80093666-2



RATED LIFTING CAPACITIES IN POUNDS WITH MAIN BOOM AND 27000 lb CWT ON OUTRIGGERS 50% EXTENDED (17' spread) - 360°

| Radius in feet | Main boom length in feet - RCL Code #4001 | | | | | | | | | | | | | | | |
|---|---|------------------|-------------------|------------------|------------------|------------------|------------------|------------------|------------------|------------------|------------------|------------------|------------------|------------------|------------------|------------------|
| | 39.2 | 53.6 | 53.6 | 53.6 | 68.0 | 68.0 | 68.0 | 68.0 | 82.4 | 82.4 | 82.4 | 82.4 | 96.8 | 96.8 | 96.8 | 96.8 |
| Tele I | 0% | 0% | 50% | | 0% | 50% | 100% | | 0% | 50% | 100% | | 0% | 50% | 100% | |
| Tele II | 0% | 17% | 0% | | 33% | 17% | 0% | | 50% | 33% | 17% | | 67% | 50% | 33% | |
| Tele III | 0% | 17% | 0% | | 33% | 17% | 0% | | 50% | 33% | 17% | | 67% | 50% | 33% | |
| Tele IV | 0% | 17% | 0% | | 33% | 17% | 0% | | 50% | 33% | 17% | | 67% | 50% | 33% | |
| Mode | A,X,B,M | A | X,B | M | A | X | B | M | A | X | B | M | A | X | B | M |
| 10 | 162,000 (69) | 56,100 (75.5) | 136,500 (75.5) | 56,100 (75.5) | 55,550 (78.5) | 55,500 (78.5) | 97,600 (79) | 55,500 (78.5) | *55,500 (80) | *55,500 (80) | *55,450 (80) | *55,450 (80) | | | | |
| 12 | 143,500 (66) | 56,100 (73) | 136,500 (73) | 56,100 (73) | 55,550 (77) | 55,500 (77) | 97,600 (77) | 55,500 (77) | 55,500 (79.5) | 55,500 (79.5) | 55,450 (79.5) | 55,450 (79.5) | | | | |
| 15 | 122,000 (61) | 56,100 (69.5) | 121,000 (69.5) | 56,100 (69.5) | 55,550 (74) | 55,500 (74) | 93,750 (74.5) | 55,500 (74) | 55,500 (77) | 55,500 (77) | 55,450 (77.5) | 55,450 (77.5) | 37,850 (79.5) | 55,500 (79.5) | 55,450 (79.5) | 37,850 (79.5) |
| 20 | 84,150 (51.5) | 56,100 (63.5) | 75,550 (63.5) | 56,100 (63.5) | 55,550 (69.5) | 55,500 (69.5) | 68,850 (70) | 55,500 (69.5) | 55,500 (73.5) | 55,500 (73.5) | 55,450 (74) | 55,450 (74) | 37,850 (76.5) | 55,500 (76.5) | 55,450 (76.5) | 37,850 (76.5) |
| 25 | 54,100 (40) | 56,100 (57) | 52,350 (57) | 52,350 (57) | 55,550 (65) | 52,350 (65) | 48,300 (65) | 48,300 (65) | 54,800 (70) | 51,400 (69.5) | 48,050 (70) | 48,050 (70) | 37,850 (73.5) | 50,200 (73.5) | 47,350 (73.5) | 37,850 (73.5) |
| 30 | 38,000 (23.5) | 41,150 (50) | 36,100 (50) | 36,100 (50) | 42,800 (60) | 39,050 (60) | 35,750 (60.5) | 35,750 (60.5) | 42,450 (66) | 39,300 (66) | 36,150 (66.5) | 36,150 (66.5) | 37,850 (70) | 38,800 (70) | 36,150 (70.5) | 36,150 (70.5) |
| 35 | | 30,850 (42) | 25,850 (42) | 25,850 (42) | 32,800 (55) | 28,950 (55) | 26,350 (55) | 26,350 (55) | 33,600 (62) | 30,900 (62) | 28,100 (62.5) | 28,100 (62.5) | 33,450 (67) | 30,950 (67) | 28,400 (67) | 28,400 (67) |
| 40 | | 23,800 (32.5) | 18,900 (32) | 18,900 (32) | 25,700 (49.5) | 21,900 (49) | 19,700 (49.5) | 19,700 (49.5) | 26,750 (58) | 24,200 (58) | 21,600 (58.5) | 21,600 (58.5) | 27,250 (63.5) | 25,100 (63.5) | 22,750 (64) | 22,750 (64) |
| 45 | | 18,700 (16.5) | 13,800 (16.5) | 13,800 (16.5) | 20,450 (43.5) | 16,750 (43) | 14,800 (43.5) | 14,800 (43.5) | 21,800 (53.5) | 19,300 (53.5) | 16,750 (54) | 16,750 (54) | 22,300 (60) | 20,200 (60) | 18,050 (60.5) | 18,050 (60.5) |
| 50 | | | | | 16,500 (36) | 12,850 (36) | 11,100 (36) | 11,100 (36) | 17,900 (49) | 15,500 (48.5) | 12,850 (49.5) | 12,850 (49.5) | 18,500 (56.5) | 16,500 (56.5) | 14,350 (57) | 14,350 (57) |
| 55 | | | | | 13,400 (27) | 9,830 (27) | 8,200 (27) | 8,200 (27) | 14,750 (44) | 12,450 (43.5) | 9,860 (44) | 9,860 (44) | 15,450 (53) | 13,450 (53) | 11,300 (53) | 11,300 (53) |
| 60 | | | | | 10,900 (11) | 7,350 (10.5) | 5,780 (11) | 5,780 (11) | 12,200 (38.5) | 9,980 (38) | 7,410 (38.5) | 7,410 (38.5) | 12,900 (49) | 10,950 (49) | 8,830 (49) | 8,830 (49) |
| 65 | | | | | | | | | 10,100 (31.5) | 7,930 (31.5) | 5,390 (32) | 5,390 (32) | 10,800 (45) | 8,880 (44.5) | 6,780 (45) | 6,780 (45) |
| 70 | | | | | | | | | 8,350 (23) | 6,210 (23) | 3,700 (23.5) | 3,700 (23.5) | 9,040 (40) | 7,140 (40) | 5,060 (40) | 5,060 (40) |
| 75 | | | | | | | | | | | | | 7,540 (35) | 5,660 (34.5) | 3,610 (35) | 3,610 (35) |
| 80 | | | | | | | | | | | | | 6,260 (28.5) | 4,380 (28.5) | 2,350 (28.5) | 2,350 (28.5) |
| 85 | | | | | | | | | | | | | 5,130 (20.5) | 3,280 (20) | 1,260 (20.5) | 1,260 (20.5) |
| Minimum boom angle (°) for indicated length (no load) | | | | | | | | | | | | | | 0 | 0 | |
| Maximum boom length (ft.) at 0° boom angle (no load) - Mode A and X | | | | | | | | | | | | | | | | 125.5 |
| Maximum boom length (ft.) at 0° boom angle (no load) - Mode B and M | | | | | | | | | | | | | | | | 96.8 |

NOTE: () Boom angles are in degrees.

*This capacity is based on maximum boom angle

#RCL operating code. Refer to RCL manual for operating instructions.

| Boom angle | Lifting capacities at 0° boom angle | | | | | | | | | | | | | | | |
|---------------|-------------------------------------|------------------|------------------|------------------|------------------|-----------------|-----------------|-----------------|-----------------|-----------------|-----------------|-----------------|-----------------|-----------------|------|------|
| | 39.2 | 53.6 | 53.6 | 53.6 | 68.0 | 68.0 | 68.0 | 68.0 | 82.4 | 82.4 | 82.4 | 82.4 | 96.8 | 96.8 | 96.8 | 96.8 |
| 0° | 28,350 (31.7) | 17,750 (46.1) | 12,850 (46.1) | 12,850 (46.1) | 10,650 (60.5) | 7,140 (60.5) | 5,520 (60.5) | 5,520 (60.5) | 6,880 (74.8) | 4,780 (74.8) | 2,300 (74.8) | 2,300 (74.8) | 4,290 (89.2) | 2,450 (89.2) | | |

NOTE: () Reference radii in feet.

Shaded area indicates optimal lift capacity within boom length sections.

80081389A-1



RATED LIFTING CAPACITIES IN POUNDS WITH MAIN BOOM AND 27000 lb CWT (cont'd.) ON OUTRIGGERS 50% EXTENDED (17' spread) - 360°

| Radius in feet | Main boom length in feet - RCL Code #4001 | | | | | | | | | | | |
|---|---|------------------|------------------|------------------|------------------|------------------|------------------|------------------|------------------|------------------|------------------|------------------|
| | 111.1 | 111.1 | 111.1 | 111.1 | 125.5 | 125.5 | 125.5 | 125.5 | 139.9 | 139.9 | 139.9 | 154.3 |
| Tele I | 0% | 50% | 100% | | 0% | 50% | 100% | | 50% | 100% | | 100% |
| Tele II | 83% | 67% | 50% | | 100% | 83% | 67% | | 100% | 83% | | 100% |
| Tele III | 83% | 67% | 50% | | 100% | 83% | 67% | | 100% | 83% | | 100% |
| Tele IV | 83% | 67% | 50% | | 100% | 83% | 67% | | 100% | 83% | | 100% |
| Mode | A | X | B | M | A | X | B | M | A,X | B | M | A,X,B,M |
| 15 | *26,350 (80) | *37,750 (80) | *54,500 (80) | *26,350 (80) | | | | | | | | |
| 20 | 26,350 (78.5) | 37,750 (78.5) | 54,500 (78.5) | 26,350 (78.5) | 21,650 (80) | 26,300 (80) | *37,700 (80) | 21,650 (80) | *21,600 (80) | *26,250 (80) | *21,600 (80) | |
| 25 | 26,350 (76) | 37,750 (76) | 46,400 (76) | 26,350 (76) | 21,650 (78) | 26,300 (78) | 37,700 (78) | 21,650 (78) | 21,600 (79.5) | 26,250 (79.5) | 21,600 (79.5) | *21,550 (80) |
| 30 | 26,350 (73) | 37,750 (73.5) | 35,750 (73.5) | 26,350 (73) | 21,650 (75.5) | 26,300 (75.5) | 35,250 (75.5) | 21,650 (75.5) | 21,600 (77.5) | 26,250 (77.5) | 21,600 (77.5) | 21,550 (79) |
| 35 | 26,350 (70.5) | 30,600 (70.5) | 28,400 (70.5) | 26,350 (70.5) | 21,650 (73) | 26,300 (73) | 28,200 (73) | 21,650 (73) | 21,600 (75) | 26,250 (75.5) | 21,600 (75) | 21,550 (77) |
| 40 | 26,350 (67.5) | 25,100 (68) | 22,950 (67.5) | 22,950 (67.5) | 21,650 (70.5) | 24,850 (70.5) | 22,950 (70.5) | 21,650 (70.5) | 21,600 (73) | 22,850 (73) | 21,600 (73) | 21,550 (75) |
| 45 | 22,650 (65) | 20,800 (65) | 18,750 (65) | 18,750 (65) | 21,650 (68) | 20,750 (68) | 18,900 (68) | 18,900 (68) | 20,600 (71) | 18,950 (71) | 18,950 (71) | 18,900 (73) |
| 50 | 18,850 (62) | 17,100 (62) | 15,300 (62) | 15,300 (62) | 19,150 (65.5) | 17,550 (65.5) | 15,700 (66) | 15,700 (66) | 17,450 (68.5) | 15,800 (69) | 15,800 (69) | 15,850 (71) |
| 55 | 15,900 (59) | 14,150 (59) | 12,400 (59) | 12,400 (59) | 16,150 (63) | 14,600 (63) | 13,050 (63.5) | 13,050 (63.5) | 14,900 (66.5) | 13,300 (66.5) | 13,300 (66.5) | 13,400 (69) |
| 60 | 13,500 (56) | 11,800 (56) | 10,050 (56) | 10,050 (56) | 13,750 (60.5) | 12,250 (60.5) | 10,700 (60.5) | 10,700 (60.5) | 12,600 (64) | 11,150 (64.5) | 11,150 (64.5) | 11,350 (67.5) |
| 65 | 11,400 (52.5) | 9,770 (52.5) | 8,090 (52.5) | 8,090 (52.5) | 11,800 (58) | 10,300 (58) | 8,740 (58) | 8,740 (58) | 10,650 (62) | 9,280 (62) | 9,280 (62) | 9,610 (65.5) |
| 70 | 9,680 (49) | 8,010 (49) | 6,350 (49) | 6,350 (49) | 10,150 (55) | 8,590 (55) | 7,050 (55) | 7,050 (55) | 9,040 (59.5) | 7,650 (59.5) | 7,650 (59.5) | 8,080 (63.5) |
| 75 | 8,190 (45.5) | 6,510 (45.5) | 4,870 (45.5) | 4,870 (45.5) | 8,700 (52) | 7,100 (52) | 5,580 (52) | 5,580 (52) | 7,640 (57) | 6,230 (57.5) | 6,230 (57.5) | 6,700 (61) |
| 80 | 6,900 (41.5) | 5,220 (41.5) | 3,600 (41.5) | 3,600 (41.5) | 7,450 (49) | 5,810 (49) | 4,300 (49) | 4,300 (49) | 6,380 (54.5) | 4,980 (54.5) | 4,980 (54.5) | 5,510 (59) |
| 85 | 5,780 (37) | 4,100 (37) | 2,490 (37) | 2,490 (37) | 6,370 (46) | 4,690 (45.5) | 3,200 (46) | 3,200 (46) | 5,260 (52) | 3,880 (52) | 3,880 (52) | 4,480 (56.5) |
| 90 | 4,800 (32) | 3,110 (32) | 1,520 (32) | 1,520 (32) | 5,410 (42.5) | 3,710 (42) | 2,230 (42.5) | 2,230 (42.5) | 4,290 (49) | 2,910 (49.5) | 2,910 (49.5) | 3,550 (54.5) |
| 95 | 3,930 (26) | 2,240 (26) | | | 4,540 (38.5) | 2,850 (38.5) | 1,380 (38.5) | 1,380 (38.5) | 3,420 (46) | 2,060 (46.5) | 2,060 (46.5) | 2,720 (52) |
| 100 | 3,160 (18) | 1,470 (18) | | | 3,770 (34.5) | 2,080 (34.5) | | | 2,650 (43) | 1,290 (43.5) | 1,290 (43.5) | 1,960 (49.5) |
| 105 | | | | | 3,080 (29.5) | 1,380 (29.5) | | | 1,970 (39.5) | | | 1,280 (47) |
| 110 | | | | | 2,450 (24) | | | | 1,340 (36) | | | |
| 115 | | | | | 1,890 (16) | | | | | | | |
| Minimum boom angle (°) for indicated length (no load) | 0 | 0 | 18 | 18 | 0 | 0 | 30 | 30 | 28 | 37 | 37 | 41 |
| Maximum boom length (ft.) at 0° boom angle (no load) - Mode A and X | | | | | | | | | | | | 125.5 |
| Maximum boom length (ft.) at 0° boom angle (no load) - Mode B and M | | | | | | | | | | | | 96.8 |

NOTE: () Boom angles are in degrees.

*This capacity is based on maximum boom angle

#RCL operating code. Refer to RCL manual for operating instructions.

| Boom angle | Lifting capacities at 0° boom angle | | | | | | | | | | | |
|---------------|-------------------------------------|-------|-------|-------|----------------|-------|-------|-------|-------|-------|-------|-------|
| | 111.1 | 111.1 | 111.1 | 111.1 | 125.5 | 125.5 | 125.5 | 125.5 | 139.9 | 139.9 | 139.9 | 154.3 |
| 0° | 2,650 (103.6) | | | | 1,570 (118) | | | | | | | |

NOTE: () Reference radii in feet.

Shaded area indicates optimal lift capacity within boom length sections.

80081389A-2



RATED LIFTING CAPACITIES IN POUNDS WITH MAIN BOOM AND 27000 lb CWT ON OUTRIGGERS 0% EXTENDED (10' spread) - 360°

| Radius in feet | Main boom length in feet - RCL Code #8001 | | | | | | | | | | | | | | | |
|---|---|------------------|-------------------|------------------|------------------|------------------|------------------|------------------|------------------|------------------|------------------|------------------|------------------|------------------|------------------|------------------|
| | 39.2 | 53.6 | 53.6 | 53.6 | 68.0 | 68.0 | 68.0 | 68.0 | 82.4 | 82.4 | 82.4 | 82.4 | 96.8 | 96.8 | 96.8 | 96.8 |
| Tele I | 0% | 0% | 50% | | 0% | 50% | 100% | | 0% | 50% | 100% | | 0% | 50% | 100% | |
| Tele II | 0% | 17% | 0% | | 33% | 17% | 0% | | 50% | 33% | 17% | | 67% | 50% | 33% | |
| Tele III | 0% | 17% | 0% | | 33% | 17% | 0% | | 50% | 33% | 17% | | 67% | 50% | 33% | |
| Tele IV | 0% | 17% | 0% | | 33% | 17% | 0% | | 50% | 33% | 17% | | 67% | 50% | 33% | |
| Mode | A,X,B,M | A | X,B | M | A | X | B | M | A | X | B | M | A | X | B | M |
| 10 | 121,000 (69) | 56,100 (75.5) | 104,500 (75.5) | 56,100 (75.5) | | 55,500 (78.5) | 92,350 (79) | | | *55,500 (80) | *55,450 (80) | | | | | |
| 12 | 93,050 (66) | 56,100 (73) | 81,400 (73) | 56,100 (73) | 55,550 (77) | 55,500 (77) | 72,650 (77) | 55,500 (77) | 55,500 (79.5) | 55,500 (79.5) | 55,450 (79.5) | 55,450 (79.5) | | | | |
| 15 | 67,000 (61) | 56,100 (69.5) | 59,600 (69.5) | 56,100 (69.5) | 55,550 (74) | 55,500 (74) | 53,700 (74.5) | 53,700 (74.5) | 55,500 (77) | 55,500 (77) | 52,250 (77.5) | 52,250 (77.5) | 37,850 (79.5) | 53,350 (79.5) | 50,500 (79.5) | 37,850 (79.5) |
| 20 | 42,650 (51.5) | 43,750 (63.5) | 39,000 (63.5) | 39,000 (63.5) | 42,800 (69.5) | 39,100 (69.5) | 35,350 (70) | 35,350 (70) | 41,500 (73.5) | 38,400 (73.5) | 35,350 (74) | 35,350 (74) | 37,850 (76.5) | 37,500 (76.5) | 34,900 (76.5) | 34,900 (76.5) |
| 25 | 28,250 (40) | 31,200 (57) | 26,950 (57) | 26,950 (57) | 31,600 (65) | 28,100 (65) | 24,600 (65) | 24,600 (65) | 31,050 (70) | 28,150 (69.5) | 25,250 (70) | 25,250 (70) | 30,300 (73.5) | 27,850 (73.5) | 25,400 (73.5) | 25,400 (73.5) |
| 30 | 19,550 (23.5) | 22,300 (50) | 17,900 (50) | 17,900 (50) | 24,000 (60) | 20,700 (60) | 17,400 (60.5) | 17,400 (60.5) | 24,100 (66) | 21,350 (66) | 18,550 (66.5) | 18,550 (66.5) | 23,700 (70) | 21,350 (70) | 19,000 (70.5) | 19,000 (70.5) |
| 35 | | 16,350 (42) | 11,900 (42) | 11,900 (42) | 18,100 (55) | 14,650 (55) | 12,300 (55) | 12,300 (55) | 19,050 (62) | 16,350 (62) | 13,650 (62.5) | 13,650 (62.5) | 18,950 (67) | 16,700 (67) | 14,400 (67) | 14,400 (67) |
| 40 | | 12,050 (32.5) | 7,600 (32) | 7,600 (32) | 13,750 (49.5) | 10,300 (49) | 8,340 (49.5) | 8,340 (49.5) | 14,900 (58) | 12,550 (58) | 9,970 (58.5) | 9,970 (58.5) | 15,350 (63.5) | 13,100 (63.5) | 10,900 (64) | 10,900 (64) |
| 45 | | 8,890 (16.5) | 4,370 (16.5) | 4,370 (16.5) | 10,500 (43.5) | 7,080 (43) | 5,310 (43.5) | 5,310 (43.5) | 11,700 (53.5) | 9,440 (53.5) | 7,060 (54) | 7,060 (54) | 12,350 (60) | 10,300 (60) | 8,120 (60.5) | 8,120 (60.5) |
| 50 | | | | | 7,950 (36) | 4,560 (36) | 2,950 (36) | 2,950 (36) | 9,260 (49) | 7,020 (48.5) | 4,560 (49.5) | 4,560 (49.5) | 9,880 (56.5) | 7,990 (56.5) | 5,880 (57) | 5,880 (57) |
| 55 | | | | | 5,910 (27) | 2,540 (27) | 1,040 (27) | 1,040 (27) | 7,170 (44) | 5,020 (43.5) | 2,570 (44) | 2,570 (44) | 7,820 (53) | 5,960 (53) | 3,940 (53) | 3,940 (53) |
| 60 | | | | | 4,240 (11) | | | | 5,470 (38.5) | 3,360 (38) | | | 6,120 (49) | 4,280 (49) | 2,280 (49) | 2,280 (49) |
| 65 | | | | | | | | | 4,040 (31.5) | 1,970 (31.5) | | | 4,700 (45) | 2,880 (44.5) | | |
| 70 | | | | | | | | | 2,840 (23) | | | | 3,500 (40) | 1,690 (40) | | |
| 75 | | | | | | | | | | | | | 2,470 (35) | | | |
| 80 | | | | | | | | | | | | | 1,580 (28.5) | | | |
| Minimum boom angle (°) for indicated length (no load) | | | | | 0 | 11 | 11 | 0 | 0 | 32 | 32 | 0 | 29 | 40 | 40 | |
| Maximum boom length (ft.) at 0° boom angle (no load) - Mode A | | | | | | | | | | | | | | | | 96.8 |
| Maximum boom length (ft.) at 0° boom angle (no load) - Mode X | | | | | | | | | | | | | | | | 82.4 |
| Maximum boom length (ft.) at 0° boom angle (no load) - Mode B and M | | | | | | | | | | | | | | | | 53.6 |

NOTE: () Boom angles are in degrees.

*This capacity is based on maximum boom angle

#RCL operating code. Refer to RCL manual for operating instructions.

| Boom angle | Lifting capacities at 0° boom angle | | | | | | | | | | | | | | | |
|---------------|-------------------------------------|-----------------|-----------------|-----------------|-----------------|------|------|------|-----------------|------|------|------|------|------|------|------|
| | 39.2 | 53.6 | 53.6 | 53.6 | 68.0 | 68.0 | 68.0 | 68.0 | 82.4 | 82.4 | 82.4 | 82.4 | 96.8 | 96.8 | 96.8 | 96.8 |
| 0° | 17,150 (31.7) | 8,290 (46.1) | 3,760 (46.1) | 3,760 (46.1) | 4,100 (60.5) | | | | 1,830 (74.8) | | | | | | | |

NOTE: () Reference radii in feet.

Shaded area indicates optimal lift capacity within boom length sections.

80081392A-1



RATED LIFTING CAPACITIES IN POUNDS WITH MAIN BOOM AND 27000 lb CWT (cont'd.) ON OUTRIGGERS 0% EXTENDED (10' spread) - 360°

| Radius in feet | Main boom length in feet - RCL Code #8001 | | | | | | | | | | | |
|---|---|------------------|------------------|------------------|------------------|------------------|------------------|------------------|------------------|------------------|------------------|-----------------|
| | 111.1 | 111.1 | 111.1 | 111.1 | 125.5 | 125.5 | 125.5 | 125.5 | 139.9 | 139.9 | 139.9 | 154.3 |
| Tele I | 0% | 50% | 100% | | 0% | 50% | 100% | | 50% | 100% | | 100% |
| Tele II | 83% | 67% | 50% | | 100% | 83% | 67% | | 100% | 83% | | 100% |
| Tele III | 83% | 67% | 50% | | 100% | 83% | 67% | | 100% | 83% | | 100% |
| Tele IV | 83% | 67% | 50% | | 100% | 83% | 67% | | 100% | 83% | | 100% |
| Mode | A | X | B | M | A | X | B | M | A,X | B | M | A,X,B,M |
| 15 | *26,350 (80) | *37,750 (80) | *48,600 (80) | *26,350 (80) | | | | | | | | |
| 20 | 26,350 (78.5) | 36,450 (78.5) | 34,200 (78.5) | 26,350 (78.5) | 21,650 (80) | 26,300 (80) | *33,350 (80) | 21,650 (80) | *21,600 (80) | *26,250 (80) | *21,600 (80) | |
| 25 | 26,350 (76) | 27,400 (76) | 25,200 (76) | 25,200 (76) | 21,650 (78) | 26,300 (78) | 24,900 (78) | 21,650 (78) | 21,600 (79.5) | 24,450 (79.5) | 21,600 (79.5) | *21,550 (80) |
| 30 | 23,250 (73) | 21,200 (73.5) | 19,150 (73.5) | 19,150 (73.5) | 21,650 (75.5) | 20,900 (75.5) | 19,100 (75.5) | 19,100 (75.5) | 20,600 (77.5) | 18,900 (77.5) | 18,900 (77.5) | 18,700 (79) |
| 35 | 18,700 (70.5) | 16,750 (70.5) | 14,700 (70.5) | 14,700 (70.5) | 18,400 (73) | 16,650 (73) | 14,850 (73) | 14,850 (73) | 16,450 (75) | 14,850 (75.5) | 14,850 (75.5) | 14,800 (77) |
| 40 | 15,250 (67.5) | 13,350 (68) | 11,400 (67.5) | 11,400 (67.5) | 15,050 (70.5) | 13,350 (70.5) | 11,600 (70.5) | 11,600 (70.5) | 13,300 (73) | 11,750 (73) | 11,750 (73) | 11,800 (75) |
| 45 | 12,550 (65) | 10,650 (65) | 8,740 (65) | 8,740 (65) | 12,450 (68) | 10,800 (68) | 9,090 (68) | 9,090 (68) | 10,800 (71) | 9,280 (71) | 9,280 (71) | 9,400 (73) |
| 50 | 10,300 (62) | 8,460 (62) | 6,550 (62) | 6,550 (62) | 10,350 (65.5) | 8,710 (65.5) | 7,020 (66) | 7,020 (66) | 8,810 (68.5) | 7,280 (69) | 7,280 (69) | 7,450 (71) |
| 55 | 8,360 (59) | 6,640 (59) | 4,760 (59) | 4,760 (59) | 8,570 (63) | 6,940 (63) | 5,270 (63.5) | 5,270 (63.5) | 7,140 (66.5) | 5,620 (66.5) | 5,620 (66.5) | 5,840 (69) |
| 60 | 6,720 (56) | 5,120 (56) | 3,260 (56) | 3,260 (56) | 7,070 (60.5) | 5,450 (60.5) | 3,800 (60.5) | 3,800 (60.5) | 5,680 (64) | 4,180 (64.5) | 4,180 (64.5) | 4,480 (67.5) |
| 65 | 5,300 (52.5) | 3,720 (52.5) | 1,990 (52.5) | 1,990 (52.5) | 5,720 (58) | 4,180 (58) | 2,550 (58) | 2,550 (58) | 4,440 (62) | 2,950 (62) | 2,950 (62) | 3,280 (65.5) |
| 70 | 4,110 (49) | 2,510 (49) | | | 4,570 (55) | 3,100 (55) | 1,470 (55) | 1,470 (55) | 3,370 (59.5) | 1,890 (59.5) | 1,890 (59.5) | 2,240 (63.5) |
| 75 | 3,080 (45.5) | 1,480 (45.5) | | | 3,590 (52) | 2,090 (52) | | | 2,440 (57) | | | 1,330 (61) |
| 80 | 2,200 (41.5) | | | | 2,740 (49) | 1,200 (49) | | | 1,620 (54.5) | | | |
| 85 | 1,420 (37) | | | | 2,000 (46) | | | | | | | |
| 90 | | | | | 1,320 (42.5) | | | | | | | |
| Minimum boom angle (°) for indicated length (no load) | 26 | 37 | 46 | 46 | 35 | 46 | 52 | 52 | 49 | 55 | 55 | 57 |
| Maximum boom length (ft.) at 0° boom angle (no load) - Mode A | | | | | | | | | | | | 96.8 |
| Maximum boom length (ft.) at 0° boom angle (no load) - Mode X | | | | | | | | | | | | 82.4 |
| Maximum boom length (ft.) at 0° boom angle (no load) - Mode B and M | | | | | | | | | | | | 53.6 |

NOTE: () Boom angles are in degrees.

*This capacity is based on maximum boom angle

#RCL operating code. Refer to RCL manual for operating instructions.

Shaded area indicates optimal lift capacity within boom length sections.

80081392A-2



33 - 56 FT. FOLDING BOOM EXTENSION WITH 140 FT. MAIN BOOM - MODE X

WITH 27000 lb CWT - ON OUTRIGGERS FULLY EXTENDED - 360°

| Radius in Feet | 33 ft. LENGTH | | | 56 ft. LENGTH | | |
|--|------------------|------------------|------------------|-----------------|-----------------|-----------------|
| | 0° OFFSET | 20° OFFSET | 40° OFFSET | 0° OFFSET | 20° OFFSET | 40° OFFSET |
| | #0021 | #0022 | #0023 | #0041 | #0042 | #0043 |
| 25 | *15,300 (80) | | | | | |
| 30 | 15,300 (79.5) | | | *8,890 (80) | | |
| 35 | 15,300 (78) | | | 8,890 (79.5) | | |
| 40 | 15,300 (76.5) | 15,150 (79.5) | | 8,890 (78) | | |
| 45 | 15,300 (74.5) | 14,750 (78) | *12,050 (80) | 8,890 (76.5) | | |
| 50 | 15,300 (73) | 14,350 (76.5) | 11,850 (78.5) | 8,890 (75.5) | *6,800 (80) | |
| 55 | 15,300 (71.5) | 14,000 (74.5) | 11,650 (77) | 8,670 (74) | 6,550 (79) | |
| 60 | 15,300 (70) | 13,600 (73) | 11,500 (75) | 8,050 (72.5) | 6,300 (77.5) | *5,150 (80) |
| 65 | 14,750 (68) | 13,300 (71) | 11,350 (73) | 7,580 (71) | 6,080 (76) | 5,040 (79.5) |
| 70 | 13,550 (66.5) | 13,000 (69) | 11,200 (71) | 7,110 (69.5) | 5,860 (74.5) | 4,930 (78) |
| 75 | 12,500 (64.5) | 12,600 (67.5) | 11,000 (69.5) | 6,730 (68) | 5,670 (73) | 4,830 (76.5) |
| 80 | 11,550 (63) | 11,650 (65.5) | 10,900 (67.5) | 6,350 (66.5) | 5,490 (71) | 4,740 (74.5) |
| 85 | 10,700 (61) | 10,800 (63.5) | 10,750 (65.5) | 6,040 (65) | 5,320 (69.5) | 4,660 (72.5) |
| 90 | 9,930 (59) | 10,050 (61.5) | 10,300 (63.5) | 5,730 (63.5) | 5,160 (68) | 4,580 (71) |
| 95 | 9,070 (57) | 9,370 (59.5) | 9,620 (61.5) | 5,470 (61.5) | 5,020 (66.5) | 4,510 (69) |
| 100 | 8,060 (55) | 8,630 (57.5) | 8,960 (59) | 5,220 (60) | 4,880 (64.5) | 4,440 (67) |
| 105 | 7,150 (52.5) | 7,650 (55) | 7,920 (56.5) | 5,000 (58.5) | 4,760 (63) | 4,380 (65.5) |
| 110 | 6,330 (50) | 6,770 (53) | 6,990 (54) | 4,780 (56.5) | 4,640 (61) | 4,320 (63.5) |
| 115 | 5,590 (48) | 5,980 (50.5) | 6,140 (51) | 4,590 (55) | 4,530 (59) | 4,270 (61.5) |
| 120 | 4,920 (45.5) | 5,260 (47.5) | 5,380 (48.5) | 4,410 (53) | 4,430 (57) | 4,220 (59.5) |
| 125 | 4,300 (42.5) | 4,610 (45) | 4,680 (45.5) | 4,250 (51) | 4,330 (55) | 4,180 (57.5) |
| 130 | 3,740 (40) | 4,010 (42) | 4,040 (42.5) | 4,100 (48.5) | 4,240 (53) | 4,140 (55) |
| 135 | 3,230 (37) | 3,460 (39) | | 3,740 (46.5) | 4,150 (50.5) | 4,110 (53) |
| 140 | 2,750 (34) | 2,950 (36) | | 3,260 (44) | 3,800 (48.5) | 4,090 (50.5) |
| 145 | 2,310 (30.5) | 2,480 (32.5) | | 2,820 (42) | 3,290 (46) | 3,730 (48) |
| 150 | 1,900 (27) | 2,040 (28.5) | | 2,410 (39.5) | 2,820 (43.5) | 3,230 (45) |
| 155 | 1,530 (22.5) | 1,630 (23.5) | | 2,030 (37) | 2,380 (40.5) | |
| 160 | 1,170 (16.5) | | | 1,670 (34) | 1,970 (38) | |
| 165 | | | | 1,340 (31) | 1,580 (34.5) | |
| 170 | | | | 1,030 (28) | 1,220 (31) | |
| Min. boom angle for indicated length (no load) | 15° | 22° | 41° | 27° | 27° | 44° |
| Max. boom length at 0° boom angle (no load) | 97 ft. | | | 97 ft. | | |

NOTE: () Boom angles are in degrees.

#RCL operating code. Refer to RCL manual for operating instructions.

*This capacity is based on maximum obtainable boom angle.

80081441A

1. 33 ft. and 56 ft. folding boom extension lengths may be used for single line lifting service only.

2. For main boom lengths less than 140 ft. with the boom extension erected, the rated loads are determined by boom angle. Use only the column which corresponds to the boom extension length and offset for which the machine is set up. For boom angles not shown, use rating of the next lower boom angle.

3. WARNING: Operation of this machine with heavier loads than the capacities listed is strictly prohibited. Machine tipping with boom extension occurs rapidly and without advance warning.

4. Boom angle is the angle above or below horizontal of the longitudinal axis of the boom base section after lifting rated load.

5. Capacities listed are with outriggers properly extended and vertical jacks set only.

6. When lifting over the main boom nose with 33 ft. or 56 ft. extension erected, the outriggers must be fully extended.



33 - 56 FT. FOLDING BOOM EXTENSION WITH 140 FT. MAIN BOOM - MODE M

WITH 27000 lb CWT - ON OUTRIGGERS FULLY EXTENDED - 360°

| Radius in Feet | 33 ft. LENGTH | | | 56 ft. LENGTH | | |
|--|------------------|------------------|------------------|-----------------|-----------------|-----------------|
| | 0° OFFSET | 20° OFFSET | 40° OFFSET | 0° OFFSET | 20° OFFSET | 40° OFFSET |
| | #0021 | #0022 | #0023 | #0041 | #0042 | #0043 |
| 25 | *15,300 (80) | | | | | |
| 30 | 15,300 (79.5) | | | *8,890 (80) | | |
| 35 | 15,300 (78) | | | 8,890 (79.5) | | |
| 40 | 15,300 (76.5) | 15,150 (79.5) | | 8,890 (78) | | |
| 45 | 15,300 (74.5) | 14,750 (78) | *12,050 (80) | 8,890 (76.5) | | |
| 50 | 15,300 (73) | 14,350 (76.5) | 11,850 (78.5) | 8,890 (75.5) | *6,800 (80) | |
| 55 | 15,300 (71.5) | 14,000 (74.5) | 11,650 (77) | 8,670 (74) | 6,550 (79) | |
| 60 | 15,300 (70) | 13,600 (73) | 11,500 (75) | 8,050 (72.5) | 6,300 (77.5) | *5,150 (80) |
| 65 | 14,750 (68) | 13,300 (71) | 11,350 (73) | 7,580 (71) | 6,080 (76) | 5,040 (79.5) |
| 70 | 13,550 (66.5) | 13,000 (69) | 11,200 (71) | 7,110 (69.5) | 5,860 (74.5) | 4,930 (78) |
| 75 | 12,500 (64.5) | 12,600 (67.5) | 11,000 (69.5) | 6,730 (68) | 5,670 (73) | 4,830 (76.5) |
| 80 | 11,550 (63) | 11,650 (65.5) | 10,900 (67.5) | 6,350 (66.5) | 5,490 (71) | 4,740 (74.5) |
| 85 | 10,400 (60.5) | 10,800 (63.5) | 10,750 (65.5) | 6,040 (65) | 5,320 (69.5) | 4,660 (72.5) |
| 90 | 9,110 (58.5) | 9,900 (61.5) | 10,300 (63.5) | 5,730 (63.5) | 5,160 (68) | 4,580 (71) |
| 95 | 7,980 (56.5) | 8,680 (59.5) | 9,140 (61) | 5,470 (61.5) | 5,020 (66.5) | 4,510 (69) |
| 100 | 6,970 (54.5) | 7,600 (57) | 7,980 (58.5) | 5,220 (60) | 4,880 (64.5) | 4,440 (67) |
| 105 | 6,060 (52) | 6,640 (55) | 6,930 (56) | 5,000 (58.5) | 4,760 (63) | 4,380 (65.5) |
| 110 | 5,250 (50) | 5,770 (52.5) | 6,000 (53.5) | 4,780 (56.5) | 4,640 (61) | 4,320 (63.5) |
| 115 | 4,520 (47.5) | 4,990 (50) | 5,150 (51) | 4,590 (55) | 4,530 (59) | 4,270 (61.5) |
| 120 | 3,860 (45) | 4,270 (47.5) | 4,380 (48) | 4,410 (53) | 4,430 (57) | 4,220 (59.5) |
| 125 | 3,250 (42) | 3,630 (44.5) | 3,680 (45.5) | 3,910 (50.5) | 4,330 (55) | 4,180 (57.5) |
| 130 | 2,690 (39.5) | 3,030 (42) | 3,040 (42.5) | 3,360 (48.5) | 4,110 (52.5) | 4,140 (55) |
| 135 | 2,180 (36.5) | 2,480 (39) | | 2,850 (46) | 3,530 (50.5) | 4,020 (52.5) |
| 140 | 1,710 (33.5) | 1,980 (36) | | 2,380 (44) | 2,990 (48) | 3,430 (50.5) |
| 145 | 1,280 (30) | 1,510 (32.5) | | 1,940 (42) | 2,500 (45.5) | 2,880 (47.5) |
| 150 | | 1,080 (28.5) | | 1,540 (39.5) | 2,040 (43) | 2,370 (45) |
| 155 | | | | 1,170 (37) | 1,610 (40.5) | |
| 160 | | | | | 1,210 (37.5) | |
| Min. boom angle for indicated length (no load) | 27° | 27° | 41° | 36° | 36° | 44° |
| Max. boom length at 0° boom angle (no load) | 97 ft. | | | 97 ft. | | |

80081442A

NOTE: () Boom angles are in degrees.

#RCL operating code. Refer to RCL manual for operating instructions.

*This capacity is based on maximum obtainable boom angle.

1. 33 ft. and 56 ft. folding boom extension lengths may be used for single line lifting service only.
2. For main boom lengths less than 140 ft. with the boom extension erected, the rated loads are determined by boom angle. Use only the column which corresponds to the boom extension length and offset for which the machine is set up. For boom angles not shown, use rating of the next lower boom angle.
3. **WARNING:** Operation of this machine with heavier loads than the capacities listed is strictly prohibited. Machine tipping with boom extension occurs rapidly and without advance warning.
4. Boom angle is the angle above or below horizontal of the longitudinal axis of the boom base section after lifting rated load.
5. Capacities listed are with outriggers properly extended and vertical jacks set only.
6. When lifting over the main boom nose with 33 ft. or 56 ft. extension erected, the outriggers must be fully extended.



33 - 56 FT. FOLDING BOOM EXTENSION WITH 154 FT. MAIN BOOM - MODE X and M

WITH 27000 lb CWT - ON OUTRIGGERS FULLY EXTENDED - 360°

| Radius in Feet | 33 ft. LENGTH | | | 56 ft. LENGTH | | |
|--|------------------|------------------|------------------|-----------------|-----------------|-----------------|
| | 0° OFFSET | 20° OFFSET | 40° OFFSET | 0° OFFSET | 20° OFFSET | 40° OFFSET |
| | #0021 | #0022 | #0023 | #0041 | #0042 | #0043 |
| 30 | *13,900 (80) | | | | | |
| 35 | 13,900 (79.5) | | | *7,960 (80) | | |
| 40 | 13,900 (78) | *13,600 (80) | | 7,960 (79) | | |
| 45 | 13,900 (76.5) | 13,600 (79.5) | | 7,960 (78) | | |
| 50 | 13,900 (75) | 13,600 (78) | 11,750 (80) | 7,960 (76.5) | | |
| 55 | 13,900 (73.5) | 13,600 (76.5) | 11,600 (78.5) | 7,960 (75.5) | 6,700 (80) | |
| 60 | 13,900 (72) | 13,550 (75) | 11,450 (76.5) | 7,960 (74) | 6,450 (79) | |
| 65 | 13,900 (70.5) | 13,300 (73) | 11,300 (75) | 7,960 (72.5) | 6,240 (77.5) | *5,000 (80) |
| 70 | 13,900 (69) | 13,000 (71.5) | 11,150 (73.5) | 7,600 (71.5) | 6,040 (76) | 5,000 (79.5) |
| 75 | 13,400 (67.5) | 12,750 (70) | 11,050 (71.5) | 7,190 (70) | 5,850 (74.5) | 4,900 (78) |
| 80 | 12,000 (66) | 12,450 (68.5) | 10,950 (70) | 6,780 (68.5) | 5,660 (73) | 4,810 (76.5) |
| 85 | 10,500 (64.5) | 11,400 (66.5) | 10,850 (68) | 6,450 (67.5) | 5,500 (72) | 4,730 (74.5) |
| 90 | 9,220 (62.5) | 10,000 (64.5) | 10,650 (66.5) | 6,120 (66) | 5,350 (70.5) | 4,650 (73) |
| 95 | 8,070 (60.5) | 8,810 (63) | 9,370 (64.5) | 5,860 (64.5) | 5,200 (69) | 4,580 (71.5) |
| 100 | 7,060 (58.5) | 7,720 (61) | 8,230 (62.5) | 5,600 (63) | 5,050 (67.5) | 4,510 (69.5) |
| 105 | 6,150 (56.5) | 6,750 (58.5) | 7,220 (60.5) | 5,360 (61.5) | 4,920 (66) | 4,450 (68) |
| 110 | 5,330 (54.5) | 5,880 (56.5) | 6,300 (58) | 5,120 (60) | 4,800 (64) | 4,390 (66) |
| 115 | 4,600 (52.5) | 5,090 (54.5) | 5,480 (56) | 4,930 (58.5) | 4,690 (62.5) | 4,340 (64.5) |
| 120 | 3,930 (50) | 4,380 (52.5) | 4,730 (53.5) | 4,540 (56.5) | 4,590 (60.5) | 4,290 (62.5) |
| 125 | 3,320 (48) | 3,720 (50) | 4,040 (51) | 3,940 (54.5) | 4,490 (59) | 4,240 (61) |
| 130 | 2,760 (45.5) | 3,130 (47.5) | 3,410 (48.5) | 3,390 (52.5) | 4,230 (57) | 4,200 (59) |
| 135 | 2,250 (43.5) | 2,580 (45) | 2,840 (46) | 2,880 (50.5) | 3,660 (55) | 4,160 (57) |
| 140 | 1,770 (41) | 2,070 (43) | 2,310 (43.5) | 2,410 (48.5) | 3,140 (52.5) | 3,570 (55) |
| 145 | 1,330 (38.5) | 1,600 (40) | 1,810 (40.5) | 1,980 (46.5) | 2,660 (50.5) | 3,030 (53) |
| 150 | | 1,170 (37.5) | | 1,580 (44.5) | 2,210 (48.5) | 2,530 (50.5) |
| 155 | | | | 1,210 (42.5) | 1,800 (46.5) | 2,060 (48) |
| 160 | | | | | 1,410 (44) | 1,630 (45.5) |
| 165 | | | | | 1,050 (42) | |
| Min. boom angle for indicated length (no load) | 36° | 36° | 38° | 41° | 41° | 44° |
| Max. boom length at 0° boom angle (no load) | 97 ft. | | | 97 ft. | | |

80081443A

NOTE: () Boom angles are in degrees.

#RCL operating code. Refer to RCL manual for operating instructions.

*This capacity is based on maximum obtainable boom angle.

1. 33 ft. and 56 ft. folding boom extension lengths may be used for single line lifting service only.
2. For main boom lengths less than 154 ft. with the boom extension erected, the rated loads are determined by boom angle. Use only the column which corresponds to the boom extension length and offset for which the machine is set up. For boom angles not shown, use rating of the next lower boom angle.
3. WARNING: Operation of this machine with heavier loads than the capacities listed is strictly prohibited. Machine tipping with boom extension occurs rapidly and without advance warning.
4. Boom angle is the angle above or below horizontal of the longitudinal axis of the boom base section after lifting rated load.
5. Capacities listed are with outriggers properly extended and vertical jacks set only.
6. When lifting over the main boom nose with 33 ft. or 56 ft. extension erected, the outriggers must be fully extended.



33 - 56 FT. FOLDING BOOM EXT + 20' INSERT WITH 154 FT. MAIN BOOM - MODE X and M WITH 27000 lb CWT - ON OUTRIGGERS FULLY EXTENDED - 360°

| Radius in Feet | 76 ft. LENGTH (56' ext + 20' insert) | | |
|--|--------------------------------------|-----------------|-----------------|
| | 0° OFFSET | 20° OFFSET | 40° OFFSET |
| | #0084 | #0085 | #0086 |
| 40 | *6,190 (80) | | |
| 45 | 6,190 (79.5) | | |
| 50 | 6,190 (78.5) | | |
| 55 | 6,190 (77.5) | | |
| 60 | 6,190 (76) | *6,000 (80) | |
| 65 | 6,190 (75) | 6,000 (79.5) | |
| 70 | 6,190 (74) | 5,940 (78) | |
| 75 | 6,190 (72.5) | 5,760 (77) | 4,800 (80) |
| 80 | 6,190 (71.5) | 5,580 (75.5) | 4,800 (78.5) |
| 85 | 6,190 (70) | 5,420 (74.5) | 4,800 (77.5) |
| 90 | 6,190 (69) | 5,260 (73) | 4,740 (76) |
| 95 | 6,190 (68) | 5,130 (72) | 4,670 (74.5) |
| 100 | 6,090 (66.5) | 5,000 (70.5) | 4,610 (73) |
| 105 | 5,830 (65) | 4,880 (69.5) | 4,540 (71.5) |
| 110 | 5,580 (64) | 4,760 (68) | 4,480 (70.5) |
| 115 | 5,380 (62.5) | 4,650 (66.5) | 4,430 (69) |
| 120 | 4,770 (61) | 4,540 (65) | 4,380 (67.5) |
| 125 | 4,180 (59.5) | 4,440 (63.5) | 4,330 (66) |
| 130 | 3,640 (58) | 4,350 (61.5) | 4,280 (64) |
| 135 | 3,140 (56) | 3,870 (60) | 4,240 (62.5) |
| 140 | 2,680 (54.5) | 3,360 (58) | 3,870 (60.5) |
| 145 | 2,260 (52.5) | 2,880 (56) | 3,330 (58.5) |
| 150 | 1,860 (51) | 2,440 (54.5) | 2,840 (56.5) |
| 155 | 1,500 (49) | 2,030 (52.5) | 2,380 (54.5) |
| 160 | 1,160 (47.5) | 1,640 (51) | 1,950 (52.5) |
| 165 | | 1,280 (49) | 1,550 (50.5) |
| 170 | | | 1,170 (48.5) |
| Min. boom angle for indicated length (no load) | 46° | 47° | 47° |
| Max. boom length at 0° boom angle (no load) | 82 ft. | | |

NOTE: () Boom angles are in degrees.
#RCL operating code. Refer to RCL manual for
operating instructions.

*This capacity is based on maximum obtainable
boom angle.

1. The 56 ft. folding boom extension length may be used for single line lifting service only.
2. For main boom lengths less than 154 ft. with the boom extension erected, the rated loads are determined by boom angle. Use only the column which corresponds to the boom extension length and offset for which the machine is set up. For boom angles not shown, use rating of the next lower boom angle.
3. WARNING: Operation of this machine with heavier loads than the capacities listed is strictly prohibited. Machine tipping with boom extension occurs rapidly and without advance warning.
4. Boom angle is the angle above or below horizontal of the longitudinal axis of the boom base section after lifting rated load.
5. Capacities listed are with outriggers properly extended and vertical jacks set only.
6. When lifting over the main boom nose with the 56 ft. extension erected and 20 ft. insert, the outriggers must be fully extended.

80081449



RATED LIFTING CAPACITIES IN POUNDS WITH MAIN BOOM AND 22000 lb CWT ON OUTRIGGERS FULLY EXTENDED - 360°

| Radius in feet | Main boom length in feet - RCL Code #0101 | | | | | | | | | | | | | | | |
|---|---|------------------|-------------------|------------------|------------------|------------------|------------------|------------------|------------------|------------------|------------------|------------------|------------------|------------------|------------------|------------------|
| | 39.2 | 53.6 | 53.6 | 53.6 | 68.0 | 68.0 | 68.0 | 68.0 | 82.4 | 82.4 | 82.4 | 82.4 | 96.8 | 96.8 | 96.8 | 96.8 |
| Tele I | 0% | 0% | 50% | | 0% | 50% | 100% | | 0% | 50% | 100% | | 0% | 50% | 100% | |
| Tele II | 0% | 17% | 0% | | 33% | 17% | 0% | | 50% | 33% | 17% | | 67% | 50% | 33% | |
| Tele III | 0% | 17% | 0% | | 33% | 17% | 0% | | 50% | 33% | 17% | | 67% | 50% | 33% | |
| Tele IV | 0% | 17% | 0% | | 33% | 17% | 0% | | 50% | 33% | 17% | | 67% | 50% | 33% | |
| Mode | A,X,B,M | A | X,B | M | A | X | B | M | A | X | B | M | A | X | B | M |
| 8 | 180,000 (72.5) | | | | | | | | | | | | | | | |
| 9 | 180,000 (71) | | | | | | | | | | | | | | | |
| 10 | 177,000 (69) | 56,100 (75.5) | 136,500 (75.5) | 56,100 (75.5) | 55,550 (78.5) | 55,500 (78.5) | 97,600 (79) | 55,500 (78.5) | *55,500 (80) | *55,500 (80) | *55,450 (80) | *55,450 (80) | | | | |
| 12 | 158,500 (66) | 56,100 (73) | 136,500 (73) | 56,100 (73) | 55,550 (77) | 55,500 (77) | 97,600 (77) | 55,500 (77) | 55,500 (79.5) | 55,500 (79.5) | 55,450 (79.5) | 55,450 (79.5) | | | | |
| 15 | 135,500 (61) | 56,100 (69.5) | 134,500 (69.5) | 56,100 (69.5) | 55,550 (74) | 55,500 (74) | 93,750 (74.5) | 55,500 (74) | 55,500 (77) | 55,500 (77) | 55,450 (77.5) | 55,450 (77.5) | 37,850 (79.5) | 55,500 (79.5) | 55,450 (79.5) | 37,850 (79.5) |
| 20 | 103,000 (51.5) | 56,100 (63.5) | 102,000 (63.5) | 56,100 (63.5) | 55,550 (69.5) | 55,500 (69.5) | 76,300 (70) | 55,500 (69.5) | 55,500 (73.5) | 55,500 (73.5) | 55,450 (74) | 55,450 (74) | 37,850 (76.5) | 55,500 (76.5) | 55,450 (76.5) | 37,850 (76.5) |
| 25 | 79,800 (40) | 56,100 (57) | 78,200 (57) | 56,100 (57) | 55,550 (65) | 55,500 (65) | 63,400 (65) | 55,500 (65) | 55,500 (70) | 55,500 (69.5) | 55,450 (70) | 55,450 (70) | 37,850 (73.5) | 55,500 (73.5) | 54,200 (73.5) | 37,850 (73.5) |
| 30 | 59,750 (23.5) | 56,100 (50) | 55,250 (50) | 55,250 (50) | 55,550 (60) | 55,500 (60) | 53,800 (60.5) | 53,800 (60.5) | 55,500 (66) | 55,500 (66) | 49,150 (66.5) | 49,150 (66.5) | 37,850 (70) | 55,500 (70) | 46,150 (70.5) | 37,850 (70) |
| 35 | | 46,000 (42) | 41,900 (42) | 41,900 (42) | 46,950 (55) | 43,900 (55) | 43,500 (55) | 43,500 (55) | 47,750 (62) | 45,800 (62) | 42,300 (62.5) | 42,300 (62.5) | 34,400 (67) | 47,850 (67) | 39,750 (67) | 34,400 (67) |
| 40 | | 35,800 (32.5) | 32,650 (32) | 32,650 (32) | 37,200 (49.5) | 34,700 (49) | 33,200 (49.5) | 33,200 (49.5) | 38,200 (58) | 36,100 (58) | 34,300 (58.5) | 34,300 (58.5) | 30,550 (63.5) | 38,100 (63.5) | 34,600 (64) | 30,550 (63.5) |
| 45 | | 28,650 (16.5) | 25,000 (16.5) | 25,000 (16.5) | 30,350 (43.5) | 28,200 (43) | 25,950 (43.5) | 25,950 (43.5) | 31,450 (53.5) | 29,300 (53.5) | 27,150 (54) | 27,150 (54) | 27,350 (60) | 30,900 (60) | 28,250 (60.5) | 27,350 (60) |
| 50 | | | | | 25,100 (36) | 22,600 (36) | 20,450 (36) | 20,450 (36) | 26,450 (49) | 24,200 (48.5) | 21,800 (49.5) | 21,800 (49.5) | 24,750 (56.5) | 25,550 (56.5) | 22,950 (57) | 22,950 (57) |
| 55 | | | | | 21,050 (27) | 18,200 (27) | 16,200 (27) | 16,200 (27) | 22,600 (44) | 20,300 (43.5) | 17,650 (44) | 17,650 (44) | 22,500 (53) | 21,450 (53) | 18,850 (53) | 18,850 (53) |
| 60 | | | | | 17,800 (11) | 14,700 (10.5) | 12,800 (11) | 12,800 (11) | 19,500 (38.5) | 17,150 (38) | 14,300 (38.5) | 14,300 (38.5) | 19,950 (49) | 18,150 (49) | 15,550 (49) | 15,550 (49) |
| 65 | | | | | | | | | 16,900 (31.5) | 14,550 (31.5) | 11,550 (32) | 11,550 (32) | 17,350 (45) | 15,400 (44.5) | 12,900 (45) | 12,900 (45) |
| 70 | | | | | | | | | 14,550 (23) | 12,350 (23) | 9,280 (23.5) | 9,280 (23.5) | 15,100 (40) | 13,150 (40) | 10,700 (40) | 10,700 (40) |
| 75 | | | | | | | | | | | | | 13,200 (35) | 11,250 (34.5) | 8,770 (35) | 8,770 (35) |
| 80 | | | | | | | | | | | | | 11,500 (28.5) | 9,570 (28.5) | 7,120 (28.5) | 7,120 (28.5) |
| 85 | | | | | | | | | | | | | 9,990 (20.5) | 8,080 (20) | 5,690 (20.5) | 5,690 (20.5) |
| Minimum boom angle (°) for indicated length (no load) | | | | | | | | | | | | | | | | 0 |
| Maximum boom length (ft.) at 0° boom angle (no load) - Mode A and X | | | | | | | | | | | | | | | | 125.5 |
| Maximum boom length (ft.) at 0° boom angle (no load) - Mode B and M | | | | | | | | | | | | | | | | 111.1 |

*This capacity is based on maximum boom angle

#RCL operating code. Refer to RCL manual for operating instructions.

NOTE: For allowable capacities while operating in 3-second wind gust speeds greater than 30 mph and up to 45 mph, refer to *Capacity Reduction Factors for wind speed (3-second gust speed) V(z) greater than 30 mph.*

| Boom angle | Lifting capacities at 0° boom angle | | | | | | | | | | | | | | | |
|---------------|-------------------------------------|------------------|------------------|------------------|------------------|------------------|-----------------|-----------------|-----------------|-----------------|-----------------|-----------------|-----------------|-----------------|-----------------|-----------------|
| | 39.2 | 53.6 | 53.6 | 53.6 | 68.0 | 68.0 | 68.0 | 68.0 | 82.4 | 82.4 | 82.4 | 82.4 | 96.8 | 96.8 | 96.8 | 96.8 |
| 0° | 28,350 (31.7) | 18,300 (46.1) | 16,000 (46.1) | 16,000 (46.1) | 13,100 (60.5) | 10,600 (60.5) | 8,410 (60.5) | 8,410 (60.5) | 9,240 (74.8) | 7,240 (74.8) | 5,390 (74.8) | 5,390 (74.8) | 6,590 (89.2) | 4,920 (89.2) | 3,380 (89.2) | 3,380 (89.2) |

NOTE: () Reference radii in feet.

Shaded area indicates optimal lift capacity within boom length sections.

80093667-1



RATED LIFTING CAPACITIES IN POUNDS WITH MAIN BOOM AND 22000 lb CWT (cont'd.) ON OUTRIGGERS FULLY EXTENDED - 360°

| Radius in feet | Main boom length in feet - RCL Code #0101 | | | | | | | | | | | |
|---|---|------------------|------------------|------------------|------------------|------------------|------------------|------------------|------------------|------------------|------------------|------------------|
| | 111.1 | 111.1 | 111.1 | 111.1 | 125.5 | 125.5 | 125.5 | 125.5 | 139.9 | 139.9 | 139.9 | 154.3 |
| Tele I | 0% | 50% | 100% | | 0% | 50% | 100% | | 50% | 100% | | 100% |
| Tele II | 83% | 67% | 50% | | 100% | 83% | 67% | | 100% | 83% | | 100% |
| Tele III | 83% | 67% | 50% | | 100% | 83% | 67% | | 100% | 83% | | 100% |
| Tele IV | 83% | 67% | 50% | | 100% | 83% | 67% | | 100% | 83% | | 100% |
| Mode | A | X | B | M | A | X | B | M | A,X | B | M | A,X,B,M |
| 15 | *26,350 (80) | *37,750 (80) | *54,500 (80) | *26,350 (80) | | | | | | | | |
| 20 | 26,350 (78.5) | 37,750 (78.5) | 54,500 (78.5) | 26,350 (78.5) | 21,650 (80) | 26,300 (80) | *37,700 (80) | 21,650 (80) | *21,600 (80) | *26,250 (80) | *21,600 (80) | |
| 25 | 26,350 (76) | 37,750 (76) | 50,600 (76) | 26,350 (76) | 21,650 (78) | 26,300 (78) | 37,700 (78) | 21,650 (78) | 21,600 (79.5) | 26,250 (79.5) | 21,600 (79.5) | *21,550 (80) |
| 30 | 26,350 (73) | 37,750 (73.5) | 43,800 (73.5) | 26,350 (73) | 21,650 (75.5) | 26,300 (75.5) | 37,700 (75.5) | 21,650 (75.5) | 21,600 (77.5) | 26,250 (77.5) | 21,600 (77.5) | 21,550 (79) |
| 35 | 26,350 (70.5) | 37,750 (70.5) | 37,950 (70.5) | 26,350 (70.5) | 21,650 (73) | 26,300 (73) | 36,300 (73) | 21,650 (73) | 21,600 (75) | 26,250 (75.5) | 21,600 (75) | 21,550 (77) |
| 40 | 26,350 (67.5) | 34,300 (68) | 33,050 (67.5) | 26,350 (67.5) | 21,650 (70.5) | 26,300 (70.5) | 31,900 (70.5) | 21,650 (70.5) | 21,600 (73) | 26,250 (73) | 21,600 (73) | 21,550 (75) |
| 45 | 24,400 (65) | 30,950 (65) | 29,100 (65) | 24,400 (65) | 21,650 (68) | 26,300 (68) | 28,100 (68) | 21,650 (68) | 21,600 (71) | 26,250 (71) | 21,600 (71) | 21,550 (73) |
| 50 | 22,000 (62) | 26,900 (62) | 24,050 (62) | 22,000 (62) | 20,050 (65.5) | 24,550 (65.5) | 24,650 (66) | 20,050 (65.5) | 21,600 (68.5) | 24,200 (69) | 21,600 (68.5) | 21,550 (71) |
| 55 | 19,900 (59) | 22,550 (59) | 20,000 (59) | 19,900 (59) | 18,100 (63) | 22,350 (63) | 20,550 (63.5) | 18,100 (63) | 20,050 (66.5) | 21,150 (66.5) | 20,050 (66.5) | 21,150 (69) |
| 60 | 18,150 (56) | 19,100 (56) | 16,750 (56) | 16,750 (56) | 16,450 (60.5) | 19,300 (60.5) | 17,300 (60.5) | 16,450 (60.5) | 18,300 (64) | 17,900 (64.5) | 17,900 (64.5) | 18,500 (67.5) |
| 65 | 16,600 (52.5) | 16,300 (52.5) | 14,100 (52.5) | 14,100 (52.5) | 15,000 (58) | 16,550 (58) | 14,700 (58) | 14,700 (58) | 16,750 (62) | 15,250 (62) | 15,250 (62) | 15,850 (65.5) |
| 70 | 15,250 (49) | 13,950 (49) | 11,900 (49) | 11,900 (49) | 13,700 (55) | 14,300 (55) | 12,500 (55) | 12,500 (55) | 14,600 (59.5) | 13,100 (59.5) | 13,100 (59.5) | 13,650 (63.5) |
| 75 | 13,650 (45.5) | 12,000 (45.5) | 10,050 (45.5) | 10,050 (45.5) | 12,600 (52) | 12,350 (52) | 10,650 (52) | 10,650 (52) | 12,700 (57) | 11,250 (57.5) | 11,250 (57.5) | 11,800 (61) |
| 80 | 12,000 (41.5) | 10,300 (41.5) | 8,470 (41.5) | 8,470 (41.5) | 11,600 (49) | 10,700 (49) | 9,080 (49) | 9,080 (49) | 11,100 (54.5) | 9,670 (54.5) | 9,670 (54.5) | 10,250 (59) |
| 85 | 10,550 (37) | 8,810 (37) | 7,060 (37) | 7,060 (37) | 10,700 (46) | 9,310 (45.5) | 7,710 (46) | 7,710 (46) | 9,750 (52) | 8,300 (52) | 8,300 (52) | 8,890 (56.5) |
| 90 | 9,340 (32) | 7,510 (32) | 5,820 (32) | 5,820 (32) | 9,760 (42.5) | 8,060 (42) | 6,510 (42.5) | 6,510 (42.5) | 8,540 (49) | 7,110 (49.5) | 7,110 (49.5) | 7,700 (54.5) |
| 95 | 8,190 (26) | 6,350 (26) | 4,730 (26) | 4,730 (26) | 8,650 (38.5) | 6,940 (38.5) | 5,430 (38.5) | 5,430 (38.5) | 7,470 (46) | 6,060 (46.5) | 6,060 (46.5) | 6,640 (52) |
| 100 | 7,150 (18) | 5,330 (18) | 3,750 (18) | 3,750 (18) | 7,670 (34.5) | 5,940 (34.5) | 4,460 (34.5) | 4,460 (34.5) | 6,520 (43) | 5,120 (43.5) | 5,120 (43.5) | 5,710 (49.5) |
| 105 | | | | | 6,800 (29.5) | 5,040 (29.5) | 3,600 (29.5) | 3,600 (29.5) | 5,650 (39.5) | 4,260 (40) | 4,260 (40) | 4,880 (47) |
| 110 | | | | | 6,010 (24) | 4,240 (24) | 2,830 (24) | 2,830 (24) | 4,860 (36) | 3,490 (36.5) | 3,490 (36.5) | 4,130 (44) |
| 115 | | | | | 5,300 (16) | 3,510 (16) | 2,120 (16) | 2,120 (16) | 4,150 (32) | 2,790 (32.5) | 2,790 (32.5) | 3,430 (41) |
| 120 | | | | | | | | | 3,510 (27.5) | 2,150 (28) | 2,150 (28) | 2,800 (38) |
| 125 | | | | | | | | | 2,900 (22) | 1,550 (22) | 1,550 (22) | 2,220 (34.5) |
| 130 | | | | | | | | | 2,340 (14) | 1,000 (14) | 1,000 (14) | 1,690 (30.5) |
| 135 | | | | | | | | | | | | 1,180 (26) |
| Minimum boom angle (°) for indicated length (no load) | | | | | | | | 15 | 15 | 13 | 13 | 25 |
| Maximum boom length (ft.) at 0° boom angle (no load) - Mode A and X | | | | | | | | | | | | 125.5 |
| Maximum boom length (ft.) at 0° boom angle (no load) - Mode B and M | | | | | | | | | | | | 111.1 |

*This capacity is based on maximum boom angle

#RCL operating code. Refer to RCL manual for operating instructions.

NOTE: For allowable capacities while operating in 3-second wind gust speeds greater than 30 mph and up to 45 mph, refer to *Capacity Reduction Factors for wind speed (3-second gust speed) V(z) greater than 30 mph*.

| Boom angle | Lifting capacities at 0° boom angle | | | | | | | | | | | |
|---------------|-------------------------------------|------------------|------------------|------------------|----------------|----------------|-------|-------|-------|-------|-------|-------|
| | 111.1 | 111.1 | 111.1 | 111.1 | 125.5 | 125.5 | 125.5 | 125.5 | 139.9 | 139.9 | 139.9 | 154.3 |
| 0° | 4,680 (103.6) | 3,230 (103.6) | 1,910 (103.6) | 1,910 (103.6) | 3,230 (118) | 1,950 (118) | | | | | | |

NOTE: () Reference radii in feet.

Shaded area indicates optimal lift capacity within boom length sections.

80093667-2



RATED LIFTING CAPACITIES IN POUNDS WITH MAIN BOOM AND 22000 lb CWT ON OUTRIGGERS 50% EXTENDED (17' spread) - 360°

| Radius in feet | Main boom length in feet - RCL Code #4101 | | | | | | | | | | | | | | | |
|---|---|------------------|-------------------|------------------|------------------|------------------|------------------|------------------|------------------|------------------|------------------|------------------|------------------|------------------|------------------|------------------|
| | 39.2 | 53.6 | 53.6 | 53.6 | 68.0 | 68.0 | 68.0 | 68.0 | 82.4 | 82.4 | 82.4 | 82.4 | 96.8 | 96.8 | 96.8 | 96.8 |
| Tele I | 0% | 0% | 50% | | 0% | 50% | 100% | | 0% | 50% | 100% | | 0% | 50% | 100% | |
| Tele II | 0% | 17% | 0% | | 33% | 17% | 0% | | 50% | 33% | 17% | | 67% | 50% | 33% | |
| Tele III | 0% | 17% | 0% | | 33% | 17% | 0% | | 50% | 33% | 17% | | 67% | 50% | 33% | |
| Tele IV | 0% | 17% | 0% | | 33% | 17% | 0% | | 50% | 33% | 17% | | 67% | 50% | 33% | |
| Mode | A,X,B,M | A | X,B | M | A | X | B | M | A | X | B | M | A | X | B | M |
| 10 | 160,500 (69) | 56,100 (75.5) | 136,500 (75.5) | 56,100 (75.5) | 55,550 (78.5) | 55,500 (78.5) | 97,600 (79) | 55,500 (78.5) | *55,500 (80) | *55,500 (80) | *55,450 (80) | *55,450 (80) | | | | |
| 12 | 142,000 (66) | 56,100 (73) | 136,500 (73) | 56,100 (73) | 55,550 (77) | 55,500 (77) | 97,600 (77) | 55,500 (77) | 55,500 (79.5) | 55,500 (79.5) | 55,450 (79.5) | 55,450 (79.5) | | | | |
| 15 | 121,000 (61) | 56,100 (69.5) | 110,500 (69.5) | 56,100 (69.5) | 55,550 (74) | 55,500 (74) | 93,750 (74.5) | 55,500 (74) | 55,500 (77) | 55,500 (77) | 55,450 (77.5) | 55,450 (77.5) | 37,850 (79.5) | 55,500 (79.5) | 55,450 (79.5) | 37,850 (79.5) |
| 20 | 76,700 (51.5) | 56,100 (63.5) | 68,400 (63.5) | 56,100 (63.5) | 55,550 (69.5) | 55,500 (69.5) | 62,150 (70) | 55,500 (69.5) | 55,500 (73.5) | 55,500 (73.5) | 55,450 (74) | 55,450 (74) | 37,850 (76.5) | 55,500 (76.5) | 55,450 (76.5) | 37,850 (76.5) |
| 25 | 48,950 (40) | 52,250 (57) | 47,200 (57) | 47,200 (57) | 51,350 (65) | 47,250 (65) | 43,150 (65) | 43,150 (65) | 49,850 (70) | 46,500 (69.5) | 43,100 (70) | 43,100 (70) | 37,850 (73.5) | 45,450 (73.5) | 42,650 (73.5) | 37,850 (73.5) |
| 30 | 34,050 (23.5) | 37,200 (50) | 32,150 (50) | 32,150 (50) | 38,850 (60) | 35,150 (60) | 31,600 (60.5) | 31,600 (60.5) | 38,450 (66) | 35,300 (66) | 32,200 (66.5) | 32,200 (66.5) | 37,550 (70) | 34,950 (70) | 32,250 (70.5) | 32,250 (70.5) |
| 35 | | 27,650 (42) | 22,650 (42) | 22,650 (42) | 29,600 (55) | 25,750 (55) | 23,150 (55) | 23,150 (55) | 30,400 (62) | 27,700 (62) | 24,750 (62.5) | 24,750 (62.5) | 30,200 (67) | 27,650 (67) | 25,150 (67) | 25,150 (67) |
| 40 | | 21,100 (32.5) | 16,200 (32) | 16,200 (32) | 23,000 (49.5) | 19,250 (49) | 17,000 (49.5) | 17,000 (49.5) | 24,100 (58) | 21,500 (58) | 18,950 (58.5) | 18,950 (58.5) | 24,600 (63.5) | 22,350 (63.5) | 19,950 (64) | 19,950 (64) |
| 45 | | 16,400 (16.5) | 11,500 (16.5) | 11,500 (16.5) | 18,150 (43.5) | 14,450 (43) | 12,500 (43.5) | 12,500 (43.5) | 19,450 (53.5) | 17,000 (53.5) | 14,450 (54) | 14,450 (54) | 19,950 (60) | 17,850 (60) | 15,750 (60.5) | 15,750 (60.5) |
| 50 | | | | | 14,450 (36) | 10,850 (36) | 9,090 (36) | 9,090 (36) | 15,900 (49) | 13,450 (48.5) | 10,850 (49.5) | 10,850 (49.5) | 16,500 (56.5) | 14,450 (56.5) | 12,300 (57) | 12,300 (57) |
| 55 | | | | | 11,550 (27) | 8,010 (27) | 6,380 (27) | 6,380 (27) | 12,950 (44) | 10,650 (43.5) | 8,040 (44) | 8,040 (44) | 13,650 (53) | 11,650 (53) | 9,490 (53) | 9,490 (53) |
| 60 | | | | | 9,260 (11) | 5,710 (10.5) | 4,140 (11) | 4,140 (11) | 10,550 (38.5) | 8,340 (38) | 5,770 (38.5) | 5,770 (38.5) | 11,250 (49) | 9,320 (49) | 7,180 (49) | 7,180 (49) |
| 65 | | | | | | | | | 8,620 (31.5) | 6,430 (31.5) | 3,900 (32) | 3,900 (32) | 9,310 (45) | 7,390 (44.5) | 5,280 (45) | 5,280 (45) |
| 70 | | | | | | | | | 6,970 (23) | 4,830 (23) | 2,330 (23.5) | 2,330 (23.5) | 7,670 (40) | 5,760 (40) | 3,690 (40) | 3,690 (40) |
| 75 | | | | | | | | | | | | | 6,270 (35) | 4,390 (34.5) | 2,340 (35) | 2,340 (35) |
| 80 | | | | | | | | | | | | | 5,070 (28.5) | 3,200 (28.5) | 1,170 (28.5) | 1,170 (28.5) |
| 85 | | | | | | | | | | | | | 4,030 (20.5) | 2,170 (20) | | |
| Minimum boom angle (°) for indicated length (no load) | | | | | | | | | | | | | | 21 | 21 | |
| Maximum boom length (ft.) at 0° boom angle (no load) - Mode A | | | | | | | | | | | | | | | | 125.5 |
| Maximum boom length (ft.) at 0° boom angle (no load) - Mode X | | | | | | | | | | | | | | | | 111.1 |
| Maximum boom length (ft.) at 0° boom angle (no load) - Mode B and M | | | | | | | | | | | | | | | | 82.4 |

NOTE: () Boom angles are in degrees.

*This capacity is based on maximum boom angle

#RCL operating code. Refer to RCL manual for operating instructions.

| Boom angle | Lifting capacities at 0° boom angle | | | | | | | | | | | | | | | |
|---------------|-------------------------------------|------------------|------------------|------------------|-----------------|-----------------|-----------------|-----------------|-----------------|-----------------|-----------------|-----------------|-----------------|-----------------|------|------|
| | 39.2 | 53.6 | 53.6 | 53.6 | 68.0 | 68.0 | 68.0 | 68.0 | 82.4 | 82.4 | 82.4 | 82.4 | 96.8 | 96.8 | 96.8 | 96.8 |
| 0° | 28,350 (31.7) | 15,500 (46.1) | 10,600 (46.1) | 10,600 (46.1) | 9,060 (60.5) | 5,520 (60.5) | 3,900 (60.5) | 3,900 (60.5) | 5,610 (74.8) | 3,510 (74.8) | 1,030 (74.8) | 1,030 (74.8) | 3,250 (89.2) | 1,400 (89.2) | | |

NOTE: () Reference radii in feet.

Shaded area indicates optimal lift capacity within boom length sections.

80081378A-1



RATED LIFTING CAPACITIES IN POUNDS WITH MAIN BOOM AND 22000 lb CWT (cont'd.) ON OUTRIGGERS 50% EXTENDED (17' spread) - 360°

| Radius in feet | Main boom length in feet - RCL Code #4101 | | | | | | | | | | | |
|---|---|------------------|------------------|------------------|------------------|------------------|------------------|------------------|------------------|------------------|------------------|-----------------|
| | 111.1 | 111.1 | 111.1 | 111.1 | 125.5 | 125.5 | 125.5 | 125.5 | 139.9 | 139.9 | 139.9 | 154.3 |
| Tele I | 0% | 50% | 100% | | 0% | 50% | 100% | | 50% | 100% | | 100% |
| Tele II | 83% | 67% | 50% | | 100% | 83% | 67% | | 100% | 83% | | 100% |
| Tele III | 83% | 67% | 50% | | 100% | 83% | 67% | | 100% | 83% | | 100% |
| Tele IV | 83% | 67% | 50% | | 100% | 83% | 67% | | 100% | 83% | | 100% |
| Mode | A | X | B | M | A | X | B | M | A,X | B | M | A,X,B,M |
| 15 | *26,350 (80) | *37,750 (80) | *54,500 (80) | *26,350 (80) | | | | | | | | |
| 20 | 26,350 (78.5) | 37,750 (78.5) | 54,500 (78.5) | 26,350 (78.5) | 21,650 (80) | 26,300 (80) | *37,700 (80) | 21,650 (80) | *21,600 (80) | *26,250 (80) | *21,600 (80) | |
| 25 | 26,350 (76) | 37,750 (76) | 41,800 (76) | 26,350 (76) | 21,650 (78) | 26,300 (78) | 37,700 (78) | 21,650 (78) | 21,600 (79.5) | 26,250 (79.5) | 21,600 (79.5) | *21,550 (80) |
| 30 | 26,350 (73) | 34,350 (73.5) | 32,000 (73.5) | 26,350 (73) | 21,650 (75.5) | 26,300 (75.5) | 31,600 (75.5) | 21,650 (75.5) | 21,600 (77.5) | 26,250 (77.5) | 21,600 (77.5) | 21,550 (79) |
| 35 | 26,350 (70.5) | 27,400 (70.5) | 25,200 (70.5) | 25,200 (70.5) | 21,650 (73) | 26,300 (73) | 25,100 (73) | 21,650 (73) | 21,600 (75) | 24,850 (75.5) | 21,600 (75) | 21,550 (77) |
| 40 | 24,450 (67.5) | 22,300 (68) | 20,200 (67.5) | 20,200 (67.5) | 21,650 (70.5) | 22,150 (70.5) | 20,250 (70.5) | 20,250 (70.5) | 21,600 (73) | 20,200 (73) | 20,200 (73) | 20,050 (75) |
| 45 | 20,350 (65) | 18,400 (65) | 16,350 (65) | 16,350 (65) | 20,200 (68) | 18,350 (68) | 16,500 (68) | 16,500 (68) | 18,250 (71) | 16,600 (71) | 16,600 (71) | 16,600 (73) |
| 50 | 16,850 (62) | 15,050 (62) | 13,250 (62) | 13,250 (62) | 17,100 (65.5) | 15,350 (65.5) | 13,550 (66) | 13,550 (66) | 15,350 (68.5) | 13,700 (69) | 13,700 (69) | 13,800 (71) |
| 55 | 14,100 (59) | 12,350 (59) | 10,550 (59) | 10,550 (59) | 14,350 (63) | 12,800 (63) | 11,150 (63.5) | 11,150 (63.5) | 12,950 (66.5) | 11,350 (66.5) | 11,350 (66.5) | 11,500 (69) |
| 60 | 11,850 (56) | 10,150 (56) | 8,430 (56) | 8,430 (56) | 12,150 (60.5) | 10,600 (60.5) | 9,080 (60.5) | 9,080 (60.5) | 11,000 (64) | 9,430 (64.5) | 9,430 (64.5) | 9,610 (67.5) |
| 65 | 9,950 (52.5) | 8,270 (52.5) | 6,600 (52.5) | 6,600 (52.5) | 10,300 (58) | 8,810 (58) | 7,240 (58) | 7,240 (58) | 9,180 (62) | 7,780 (62) | 7,780 (62) | 8,000 (65.5) |
| 70 | 8,310 (49) | 6,630 (49) | 4,980 (49) | 4,980 (49) | 8,780 (55) | 7,220 (55) | 5,670 (55) | 5,670 (55) | 7,660 (59.5) | 6,270 (59.5) | 6,270 (59.5) | 6,610 (63.5) |
| 75 | 6,920 (45.5) | 5,240 (45.5) | 3,600 (45.5) | 3,600 (45.5) | 7,430 (52) | 5,820 (52) | 4,300 (52) | 4,300 (52) | 6,370 (57) | 4,960 (57.5) | 4,960 (57.5) | 5,420 (61) |
| 80 | 5,720 (41.5) | 4,040 (41.5) | 2,420 (41.5) | 2,420 (41.5) | 6,270 (49) | 4,630 (49) | 3,130 (49) | 3,130 (49) | 5,200 (54.5) | 3,810 (54.5) | 3,810 (54.5) | 4,330 (59) |
| 85 | 4,680 (37) | 2,990 (37) | 1,390 (37) | 1,390 (37) | 5,260 (46) | 3,590 (45.5) | 2,100 (46) | 2,100 (46) | 4,160 (52) | 2,790 (52) | 2,790 (52) | 3,380 (56.5) |
| 90 | 3,760 (32) | 2,080 (32) | | | 4,370 (42.5) | 2,680 (42) | 1,210 (42.5) | 1,210 (42.5) | 3,250 (49) | 1,890 (49.5) | 1,890 (49.5) | 2,510 (54.5) |
| 95 | 2,950 (26) | 1,270 (26) | | | 3,560 (38.5) | 1,870 (38.5) | | | 2,450 (46) | 1,100 (46.5) | 1,100 (46.5) | 1,740 (52) |
| 100 | 2,230 (18) | | | | 2,850 (34.5) | 1,150 (34.5) | | | 1,730 (43) | | | 1,060 (49.5) |
| 105 | | | | | 2,200 (29.5) | | | | 1,090 (39.5) | | | |
| 110 | | | | | 1,620 (24) | | | | | | | |
| 115 | | | | | 1,090 (16) | | | | | | | |
| Minimum boom angle (°) for indicated length (no load) | 0 | 0 | 26 | 26 | 0 | 24 | 39 | 39 | 32 | 40 | 40 | 44 |
| Maximum boom length (ft.) at 0° boom angle (no load) - Mode A | | | | | | | | | | | | 125.5 |
| Maximum boom length (ft.) at 0° boom angle (no load) - Mode X | | | | | | | | | | | | 111.1 |
| Maximum boom length (ft.) at 0° boom angle (no load) - Mode B and M | | | | | | | | | | | | 82.4 |

NOTE: () Boom angles are in degrees.

*This capacity is based on maximum boom angle

#RCL operating code. Refer to RCL manual for operating instructions.

| Boom angle | Lifting capacities at 0° boom angle | | | | | | | | | | | |
|---------------|-------------------------------------|-------|-------|-------|-------|-------|-------|-------|-------|-------|-------|-------|
| | 111.1 | 111.1 | 111.1 | 111.1 | 125.5 | 125.5 | 125.5 | 125.5 | 139.9 | 139.9 | 139.9 | 154.3 |
| 0° | 1,760 (103.6) | | | | | | | | | | | |

NOTE: () Reference radii in feet.

Shaded area indicates optimal lift capacity within boom length sections.

80081378A-2



RATED LIFTING CAPACITIES IN POUNDS WITH MAIN BOOM AND 22000 lb CWT ON OUTRIGGERS 0% EXTENDED (10' spread) - 360°

| Radius in feet | Main boom length in feet - RCL Code #8101 | | | | | | | | | | | | | | | |
|--|---|------------------|------------------|------------------|------------------|------------------|------------------|------------------|------------------|------------------|------------------|------------------|------------------|------------------|------------------|------------------|
| | 39.2 | 53.6 | 53.6 | 53.6 | 68.0 | 68.0 | 68.0 | 68.0 | 82.4 | 82.4 | 82.4 | 82.4 | 96.8 | 96.8 | 96.8 | 96.8 |
| Tele I | 0% | 0% | 50% | | 0% | 50% | 100% | | 0% | 50% | 100% | | 0% | 50% | 100% | |
| Tele II | 0% | 17% | 0% | | 33% | 17% | 0% | | 50% | 33% | 17% | | 67% | 50% | 33% | |
| Tele III | 0% | 17% | 0% | | 33% | 17% | 0% | | 50% | 33% | 17% | | 67% | 50% | 33% | |
| Tele IV | 0% | 17% | 0% | | 33% | 17% | 0% | | 50% | 33% | 17% | | 67% | 50% | 33% | |
| Mode | A,X,B,M | A | X,B | M | A | X | B | M | A | X | B | M | A | X | B | M |
| 10 | 109,500 (69) | 56,100 (75.5) | 94,200 (75.5) | 56,100 (75.5) | 55,550 (78.5) | 55,500 (78.5) | 82,700 (79) | 55,500 (78.5) | *55,500 (80) | *55,500 (80) | *55,450 (80) | *55,450 (80) | | | | |
| 12 | 83,750 (66) | 56,100 (73) | 72,900 (73) | 56,100 (73) | 55,550 (77) | 55,500 (77) | 64,750 (77) | 55,500 (77) | 55,500 (79.5) | 55,500 (79.5) | 55,450 (79.5) | 55,450 (79.5) | | | | |
| 15 | 59,900 (61) | 56,100 (69.5) | 53,000 (69.5) | 53,000 (69.5) | 55,550 (74) | 51,600 (74) | 47,450 (74.5) | 47,450 (74.5) | 53,150 (77) | 49,750 (77) | 46,350 (77.5) | 46,350 (77.5) | 37,850 (79.5) | 47,750 (79.5) | 44,900 (79.5) | 37,850 (79.5) |
| 20 | 37,900 (51.5) | 38,950 (63.5) | 34,200 (63.5) | 34,200 (63.5) | 38,200 (69.5) | 34,500 (69.5) | 30,750 (70) | 30,750 (70) | 37,100 (73.5) | 34,000 (73.5) | 30,900 (74) | 30,900 (74) | 35,850 (76.5) | 33,250 (76.5) | 30,650 (76.5) | 30,650 (76.5) |
| 25 | 24,650 (40) | 27,600 (57) | 23,250 (57) | 23,250 (57) | 27,950 (65) | 24,450 (65) | 20,950 (65) | 20,950 (65) | 27,550 (70) | 24,600 (69.5) | 21,700 (70) | 21,700 (70) | 26,850 (73.5) | 24,450 (73.5) | 22,000 (73.5) | 22,000 (73.5) |
| 30 | 16,700 (23.5) | 19,450 (50) | 15,050 (50) | 15,050 (50) | 21,050 (60) | 17,700 (60) | 14,350 (60.5) | 14,350 (60.5) | 21,200 (66) | 18,400 (66) | 15,600 (66.5) | 15,600 (66.5) | 20,850 (70) | 18,500 (70) | 16,150 (70.5) | 16,150 (70.5) |
| 35 | | 13,950 (42) | 9,530 (42) | 9,530 (42) | 15,750 (55) | 12,250 (55) | 9,710 (55) | 9,710 (55) | 16,500 (62) | 13,800 (62) | 11,100 (62.5) | 11,100 (62.5) | 16,500 (67) | 14,250 (67) | 11,950 (67) | 11,950 (67) |
| 40 | | 10,050 (32.5) | 5,570 (32) | 5,570 (32) | 11,700 (49.5) | 8,290 (49) | 6,240 (49.5) | 6,240 (49.5) | 12,850 (58) | 10,350 (58) | 7,760 (58.5) | 7,760 (58.5) | 13,150 (63.5) | 10,950 (63.5) | 8,740 (64) | 8,740 (64) |
| 45 | | 7,120 (16.5) | 2,590 (16.5) | 2,590 (16.5) | 8,720 (43.5) | 5,300 (43) | 3,530 (43.5) | 3,530 (43.5) | 9,960 (53.5) | 7,670 (53.5) | 5,140 (54) | 5,140 (54) | 10,550 (60) | 8,380 (60) | 6,190 (60.5) | 6,190 (60.5) |
| 50 | | | | | 6,370 (36) | 2,980 (36) | 1,370 (36) | 1,370 (36) | 7,680 (49) | 5,440 (48.5) | 2,980 (49.5) | 2,980 (49.5) | 8,300 (56.5) | 6,300 (56.5) | 4,140 (57) | 4,140 (57) |
| 55 | | | | | 4,490 (27) | 1,120 (27) | | | 5,750 (44) | 3,600 (43.5) | 1,150 (44) | 1,150 (44) | 6,400 (53) | 4,510 (53) | 2,460 (53) | 2,460 (53) |
| 60 | | | | | 2,950 (11) | | | | 4,170 (38.5) | 2,070 (38) | | | 4,830 (49) | 2,990 (49) | | |
| 65 | | | | | | | | | 2,860 (31.5) | | | | 3,520 (45) | 1,730 (44.5) | | |
| 70 | | | | | | | | | 1,740 (23) | | | | 2,410 (40) | | | |
| 75 | | | | | | | | | | | | | 1,460 (35) | | | |
| Minimum boom angle (°) for indicated length (no load) | | | | | | 11 | 27 | 27 | 0 | 23 | 39 | 39 | 21 | 40 | 45 | 45 |
| Maximum boom length (ft.) at 0° boom angle (no load) - Mode A | | | | | | | | | | | | | | | | 82.4 |
| Maximum boom length (ft.) at 0° boom angle (no load) - Mode X, B and M | | | | | | | | | | | | | | | | 53.6 |

NOTE: () Boom angles are in degrees.

*This capacity is based on maximum boom angle

#RCL operating code. Refer to RCL manual for operating instructions.

| Boom angle | Lifting capacities at 0° boom angle | | | | | | | | | | | | | | | |
|---------------|-------------------------------------|-----------------|-----------------|-----------------|-----------------|------|------|------|------|------|------|------|------|------|------|------|
| | 39.2 | 53.6 | 53.6 | 53.6 | 68.0 | 68.0 | 68.0 | 68.0 | 82.4 | 82.4 | 82.4 | 82.4 | 96.8 | 96.8 | 96.8 | 96.8 |
| 0° | 14,450 (31.7) | 6,560 (46.1) | 2,020 (46.1) | 2,020 (46.1) | 2,820 (60.5) | | | | | | | | | | | |

NOTE: () Reference radii in feet.

Shaded area indicates optimal lift capacity within boom length sections.

80081383A-1



RATED LIFTING CAPACITIES IN POUNDS WITH MAIN BOOM AND 22000 lb CWT (cont'd.) ON OUTRIGGERS 0% EXTENDED (10' spread) - 360°

| Radius in feet | Main boom length in feet - RCL Code #8101 | | | | | | | | | | | |
|---|---|------------------|------------------|------------------|------------------|------------------|------------------|------------------|------------------|------------------|------------------|-----------------|
| | 111.1 | 111.1 | 111.1 | 111.1 | 125.5 | 125.5 | 125.5 | 125.5 | 139.9 | 139.9 | 139.9 | 154.3 |
| Tele I | 0% | 50% | 100% | | 0% | 50% | 100% | | 50% | 100% | | 100% |
| Tele II | 83% | 67% | 50% | | 100% | 83% | 67% | | 100% | 83% | | 100% |
| Tele III | 83% | 67% | 50% | | 100% | 83% | 67% | | 100% | 83% | | 100% |
| Tele IV | 83% | 67% | 50% | | 100% | 83% | 67% | | 100% | 83% | | 100% |
| Mode | A | X | B | M | A | X | B | M | A,X | B | M | A,X,B,M |
| 15 | *26,350 (80) | *37,750 (80) | *43,300 (80) | *26,350 (80) | | | | | | | | |
| 20 | 26,350 (78.5) | 32,350 (78.5) | 30,100 (78.5) | 26,350 (78.5) | 21,650 (80) | 26,300 (80) | *29,400 (80) | 21,650 (80) | *21,600 (80) | *26,250 (80) | *21,600 (80) | |
| 25 | 26,200 (76) | 24,050 (76) | 21,900 (76) | 21,900 (76) | 21,650 (78) | 23,600 (78) | 21,700 (78) | 21,650 (78) | 21,600 (79.5) | 21,350 (79.5) | 21,350 (79.5) | *20,950 (80) |
| 30 | 20,450 (73) | 18,400 (73.5) | 16,350 (73.5) | 16,350 (73.5) | 20,000 (75.5) | 18,200 (75.5) | 16,350 (75.5) | 16,350 (75.5) | 17,950 (77.5) | 16,250 (77.5) | 16,250 (77.5) | 16,150 (79) |
| 35 | 16,300 (70.5) | 14,350 (70.5) | 12,300 (70.5) | 12,300 (70.5) | 16,000 (73) | 14,300 (73) | 12,500 (73) | 12,500 (73) | 14,150 (75) | 12,550 (75.5) | 12,550 (75.5) | 12,550 (77) |
| 40 | 13,150 (67.5) | 11,250 (68) | 9,280 (67.5) | 9,280 (67.5) | 13,000 (70.5) | 11,300 (70.5) | 9,560 (70.5) | 9,560 (70.5) | 11,300 (73) | 9,710 (73) | 9,710 (73) | 9,800 (75) |
| 45 | 10,650 (65) | 8,780 (65) | 6,840 (65) | 6,840 (65) | 10,600 (68) | 8,950 (68) | 7,240 (68) | 7,240 (68) | 9,010 (71) | 7,450 (71) | 7,450 (71) | 7,610 (73) |
| 50 | 8,610 (62) | 6,750 (62) | 4,840 (62) | 4,840 (62) | 8,680 (65.5) | 7,030 (65.5) | 5,340 (66) | 5,340 (66) | 7,160 (68.5) | 5,620 (69) | 5,620 (69) | 5,820 (71) |
| 55 | 6,920 (59) | 5,080 (59) | 3,200 (59) | 3,200 (59) | 7,030 (63) | 5,400 (63) | 3,730 (63.5) | 3,730 (63.5) | 5,630 (66.5) | 4,110 (66.5) | 4,110 (66.5) | 4,350 (69) |
| 60 | 5,430 (56) | 3,690 (56) | 1,820 (56) | 1,820 (56) | 5,650 (60.5) | 4,040 (60.5) | 2,380 (60.5) | 2,380 (60.5) | 4,290 (64) | 2,780 (64.5) | 2,780 (64.5) | 3,100 (67.5) |
| 65 | 4,120 (52.5) | 2,510 (52.5) | | | 4,480 (58) | 2,870 (58) | 1,240 (58) | 1,240 (58) | 3,150 (62) | 1,660 (62) | 1,660 (62) | 2,000 (65.5) |
| 70 | 3,020 (49) | 1,490 (49) | | | 3,470 (55) | 1,880 (55) | | | 2,170 (59.5) | | | 1,050 (63.5) |
| 75 | 2,070 (45.5) | | | | 2,580 (52) | 1,010 (52) | | | 1,310 (57) | | | |
| 80 | 1,250 (41.5) | | | | 1,800 (49) | | | | | | | |
| 85 | | | | | 1,110 (46) | | | | | | | |
| Minimum boom angle (°) for indicated length (no load) | 37 | 42 | 49 | 49 | 43 | 49 | 55 | 55 | 52 | 58 | 58 | 59 |
| Maximum boom length (ft.) at 0° boom angle (no load) - Mode A | | | | | | | | | | | | 82.4 |
| Maximum boom length (ft.) at 0° boom angle (no load) - Mode X, B and M | | | | | | | | | | | | 53.6 |

NOTE: () Boom angles are in degrees.

*This capacity is based on maximum boom angle

#RCL operating code. Refer to RCL manual for operating instructions.

Shaded area indicates optimal lift capacity within boom length sections.

80081383A-2



33 - 56 FT. FOLDING BOOM EXTENSION WITH 140 FT. MAIN BOOM - MODE X

WITH 22000 lb CWT - ON OUTRIGGERS FULLY EXTENDED - 360°

| Radius in Feet | 33 ft. LENGTH | | | 56 ft. LENGTH | | |
|--|------------------|------------------|------------------|-----------------|-----------------|-----------------|
| | 0° OFFSET | 20° OFFSET | 40° OFFSET | 0° OFFSET | 20° OFFSET | 40° OFFSET |
| | #0121 | #0122 | #0123 | #0141 | #0142 | #0143 |
| 25 | *15,300 (80) | | | | | |
| 30 | 15,300 (79.5) | | | *8,890 (80) | | |
| 35 | 15,300 (78) | | | 8,890 (79.5) | | |
| 40 | 15,300 (76.5) | 15,150 (79.5) | | 8,890 (78) | | |
| 45 | 15,300 (74.5) | 14,750 (78) | *12,050 (80) | 8,890 (76.5) | | |
| 50 | 15,300 (73) | 14,350 (76.5) | 11,850 (78.5) | 8,890 (75.5) | *6,800 (80) | |
| 55 | 15,300 (71.5) | 14,000 (74.5) | 11,650 (77) | 8,670 (74) | 6,550 (79) | |
| 60 | 15,300 (70) | 13,600 (73) | 11,500 (75) | 8,050 (72.5) | 6,300 (77.5) | *5,150 (80) |
| 65 | 14,750 (68) | 13,300 (71) | 11,350 (73) | 7,580 (71) | 6,080 (76) | 5,040 (79.5) |
| 70 | 13,550 (66.5) | 13,000 (69) | 11,200 (71) | 7,110 (69.5) | 5,860 (74.5) | 4,930 (78) |
| 75 | 12,500 (64.5) | 12,600 (67.5) | 11,000 (69.5) | 6,730 (68) | 5,670 (73) | 4,830 (76.5) |
| 80 | 11,550 (63) | 11,650 (65.5) | 10,900 (67.5) | 6,350 (66.5) | 5,490 (71) | 4,740 (74.5) |
| 85 | 10,150 (61) | 10,800 (63.5) | 10,750 (65.5) | 6,040 (65) | 5,320 (69.5) | 4,660 (72.5) |
| 90 | 8,940 (59) | 9,660 (61.5) | 10,150 (63.5) | 5,730 (63.5) | 5,160 (68) | 4,580 (71) |
| 95 | 7,870 (57) | 8,510 (59.5) | 8,920 (61.5) | 5,470 (61.5) | 5,020 (66.5) | 4,510 (69) |
| 100 | 6,920 (55) | 7,490 (57.5) | 7,830 (59) | 5,220 (60) | 4,880 (64.5) | 4,440 (67) |
| 105 | 6,070 (52.5) | 6,570 (55) | 6,850 (56.5) | 5,000 (58.5) | 4,760 (63) | 4,380 (65.5) |
| 110 | 5,300 (50) | 5,750 (53) | 5,970 (54) | 4,780 (56.5) | 4,640 (61) | 4,320 (63.5) |
| 115 | 4,610 (48) | 5,010 (50.5) | 5,170 (51) | 4,590 (55) | 4,530 (59) | 4,270 (61.5) |
| 120 | 3,990 (45.5) | 4,330 (47.5) | 4,450 (48.5) | 4,410 (53) | 4,430 (57) | 4,220 (59.5) |
| 125 | 3,420 (42.5) | 3,720 (45) | 3,790 (45.5) | 3,930 (51) | 4,330 (55) | 4,180 (57.5) |
| 130 | 2,890 (40) | 3,160 (42) | 3,190 (42.5) | 3,410 (48.5) | 4,100 (53) | 4,140 (55) |
| 135 | 2,410 (37) | 2,640 (39) | | 2,920 (46.5) | 3,540 (50.5) | 4,030 (53) |
| 140 | 1,970 (34) | 2,160 (36) | | 2,480 (44) | 3,020 (48.5) | 3,480 (50.5) |
| 145 | 1,560 (30.5) | 1,720 (32.5) | | 2,060 (42) | 2,540 (46) | 2,970 (48) |
| 150 | 1,180 (27) | 1,310 (28.5) | | 1,680 (39.5) | 2,090 (43.5) | 2,500 (45) |
| 155 | | | | 1,330 (37) | 1,680 (40.5) | |
| 160 | | | | 1,000 (34) | 1,290 (38) | |
| Min. boom angle for indicated length (no load) | 26° | 24° | 41° | 33° | 35° | 44° |
| Max. boom length at 0° boom angle (no load) | 97 ft. | | | 97 ft. | | |

NOTE: () Boom angles are in degrees.

#RCL operating code. Refer to RCL manual for operating instructions.

*This capacity is based on maximum obtainable boom angle.

80081428A

1. 33 ft. and 56 ft. folding boom extension lengths may be used for single line lifting service only.

2. For main boom lengths less than 140 ft. with the boom extension erected, the rated loads are determined by boom angle. Use only the column which corresponds to the boom extension length and offset for which the machine is set up. For boom angles not shown, use rating of the next lower boom angle.

3. WARNING: Operation of this machine with heavier loads than the capacities listed is strictly prohibited. Machine tipping with boom extension occurs rapidly and without advance warning.

4. Boom angle is the angle above or below horizontal of the longitudinal axis of the boom base section after lifting rated load.

5. Capacities listed are with outriggers properly extended and vertical jacks set only.

6. When lifting over the main boom nose with 33 ft. or 56 ft. extension erected, the outriggers must be fully extended.



33 - 56 FT. FOLDING BOOM EXTENSION WITH 140 FT. MAIN BOOM - MODE M

WITH 22000 lb CWT - ON OUTRIGGERS FULLY EXTENDED - 360°

| Radius in Feet | 33 ft. LENGTH | | | 56 ft. LENGTH | | |
|--|------------------|------------------|------------------|-----------------|-----------------|-----------------|
| | 0° OFFSET | 20° OFFSET | 40° OFFSET | 0° OFFSET | 20° OFFSET | 40° OFFSET |
| | #0121 | #0122 | #0123 | #0141 | #0142 | #0143 |
| 25 | *15,300 (80) | | | | | |
| 30 | 15,300 (79.5) | | | *8,890 (80) | | |
| 35 | 15,300 (78) | | | 8,890 (79.5) | | |
| 40 | 15,300 (76.5) | 15,150 (79.5) | | 8,890 (78) | | |
| 45 | 15,300 (74.5) | 14,750 (78) | *12,050 (80) | 8,890 (76.5) | | |
| 50 | 15,300 (73) | 14,350 (76.5) | 11,850 (78.5) | 8,890 (75.5) | *6,800 (80) | |
| 55 | 15,300 (71.5) | 14,000 (74.5) | 11,650 (77) | 8,670 (74) | 6,550 (79) | |
| 60 | 15,300 (70) | 13,600 (73) | 11,500 (75) | 8,050 (72.5) | 6,300 (77.5) | *5,150 (80) |
| 65 | 14,750 (68) | 13,300 (71) | 11,350 (73) | 7,580 (71) | 6,080 (76) | 5,040 (79.5) |
| 70 | 13,550 (66.5) | 13,000 (69) | 11,200 (71) | 7,110 (69.5) | 5,860 (74.5) | 4,930 (78) |
| 75 | 12,000 (64) | 12,600 (67.5) | 11,000 (69.5) | 6,730 (68) | 5,670 (73) | 4,830 (76.5) |
| 80 | 10,400 (62.5) | 11,400 (65.5) | 10,900 (67.5) | 6,350 (66.5) | 5,490 (71) | 4,740 (74.5) |
| 85 | 9,040 (60.5) | 9,910 (63.5) | 10,550 (65) | 6,040 (65) | 5,320 (69.5) | 4,660 (72.5) |
| 90 | 7,830 (58.5) | 8,620 (61.5) | 9,170 (63) | 5,730 (63.5) | 5,160 (68) | 4,580 (71) |
| 95 | 6,770 (56.5) | 7,480 (59.5) | 7,940 (61) | 5,470 (61.5) | 5,020 (66.5) | 4,510 (69) |
| 100 | 5,830 (54.5) | 6,460 (57) | 6,840 (58.5) | 5,220 (60) | 4,880 (64.5) | 4,440 (67) |
| 105 | 4,990 (52) | 5,560 (55) | 5,860 (56) | 5,000 (58.5) | 4,760 (63) | 4,380 (65.5) |
| 110 | 4,230 (50) | 4,750 (52.5) | 4,970 (53.5) | 4,780 (56.5) | 4,640 (61) | 4,320 (63.5) |
| 115 | 3,550 (47.5) | 4,010 (50) | 4,180 (51) | 4,210 (54.5) | 4,530 (59) | 4,270 (61.5) |
| 120 | 2,930 (45) | 3,340 (47.5) | 3,450 (48) | 3,590 (52.5) | 4,430 (57) | 4,220 (59.5) |
| 125 | 2,360 (42) | 2,740 (44.5) | 2,790 (45.5) | 3,020 (50.5) | 3,860 (55) | 4,180 (57.5) |
| 130 | 1,840 (39.5) | 2,180 (42) | 2,190 (42.5) | 2,510 (48.5) | 3,260 (52.5) | 3,810 (55) |
| 135 | 1,370 (36.5) | 1,670 (39) | | 2,030 (46) | 2,710 (50.5) | 3,200 (52.5) |
| 140 | | 1,200 (36) | | 1,590 (44) | 2,210 (48) | 2,640 (50.5) |
| 145 | | | | 1,190 (42) | 1,740 (45.5) | 2,120 (47.5) |
| 150 | | | | | 1,310 (43) | 1,640 (45) |
| Min. boom angle for indicated length (no load) | 34° | 35° | 41° | 41° | 41° | 44° |
| Max. boom length at 0° boom angle (no load) | 97 ft. | | | 97 ft. | | |

1. 33 ft. and 56 ft. folding boom extension lengths may be used for single line lifting service only.
2. For main boom lengths less than 140 ft. with the boom extension erected, the rated loads are determined by boom angle. Use only the column which corresponds to the boom extension length and offset for which the machine is set up. For boom angles not shown, use rating of the next lower boom angle.
3. **WARNING:** Operation of this machine with heavier loads than the capacities listed is strictly prohibited. Machine tipping with boom extension occurs rapidly and without advance warning.
4. Boom angle is the angle above or below horizontal of the longitudinal axis of the boom base section after lifting rated load.
5. Capacities listed are with outriggers properly extended and vertical jacks set only.
6. When lifting over the main boom nose with 33 ft. or 56 ft. extension erected, the outriggers must be fully extended.

NOTE: () Boom angles are in degrees.

#RCL operating code. Refer to RCL manual for operating instructions.

*This capacity is based on maximum obtainable boom angle.

80081432A



33 - 56 FT. FOLDING BOOM EXTENSION WITH 154 FT. MAIN BOOM - MODE X and M

WITH 22000 lb CWT - ON OUTRIGGERS FULLY EXTENDED - 360°

| Radius in Feet | 33 ft. LENGTH | | | 56 ft. LENGTH | | |
|--|------------------|------------------|------------------|-----------------|-----------------|-----------------|
| | 0° OFFSET | 20° OFFSET | 40° OFFSET | 0° OFFSET | 20° OFFSET | 40° OFFSET |
| | #0121 | #0122 | #0123 | #0141 | #0142 | #0143 |
| 30 | *13,900 (80) | | | | | |
| 35 | 13,900 (79.5) | | | *7,960 (80) | | |
| 40 | 13,900 (78) | *13,600 (80) | | 7,960 (79) | | |
| 45 | 13,900 (76.5) | 13,600 (79.5) | | 7,960 (78) | | |
| 50 | 13,900 (75) | 13,600 (78) | 11,750 (80) | 7,960 (76.5) | | |
| 55 | 13,900 (73.5) | 13,600 (76.5) | 11,600 (78.5) | 7,960 (75.5) | 6,700 (80) | |
| 60 | 13,900 (72) | 13,550 (75) | 11,450 (76.5) | 7,960 (74) | 6,450 (79) | |
| 65 | 13,900 (70.5) | 13,300 (73) | 11,300 (75) | 7,960 (72.5) | 6,240 (77.5) | *5,000 (80) |
| 70 | 13,900 (69) | 13,000 (71.5) | 11,150 (73.5) | 7,600 (71.5) | 6,040 (76) | 5,000 (79.5) |
| 75 | 12,100 (67.5) | 12,750 (70) | 11,050 (71.5) | 7,190 (70) | 5,850 (74.5) | 4,900 (78) |
| 80 | 10,500 (66) | 11,500 (68.5) | 10,950 (70) | 6,780 (68.5) | 5,660 (73) | 4,810 (76.5) |
| 85 | 9,150 (64.5) | 10,050 (66.5) | 10,750 (68) | 6,450 (67.5) | 5,500 (72) | 4,730 (74.5) |
| 90 | 7,930 (62.5) | 8,750 (64.5) | 9,370 (66.5) | 6,120 (66) | 5,350 (70.5) | 4,650 (73) |
| 95 | 6,870 (60.5) | 7,600 (63) | 8,170 (64.5) | 5,860 (64.5) | 5,200 (69) | 4,580 (71.5) |
| 100 | 5,920 (58.5) | 6,580 (61) | 7,100 (62.5) | 5,600 (63) | 5,050 (67.5) | 4,510 (69.5) |
| 105 | 5,070 (56.5) | 5,670 (58.5) | 6,140 (60.5) | 5,360 (61.5) | 4,920 (66) | 4,450 (68) |
| 110 | 4,310 (54.5) | 4,860 (56.5) | 5,280 (58) | 4,900 (60) | 4,800 (64) | 4,390 (66) |
| 115 | 3,620 (52.5) | 4,120 (54.5) | 4,500 (56) | 4,220 (58.5) | 4,690 (62.5) | 4,340 (64.5) |
| 120 | 3,000 (50) | 3,450 (52.5) | 3,800 (53.5) | 3,610 (56.5) | 4,580 (60.5) | 4,290 (62.5) |
| 125 | 2,430 (48) | 2,830 (50) | 3,150 (51) | 3,050 (54.5) | 3,950 (59) | 4,240 (61) |
| 130 | 1,910 (45.5) | 2,270 (47.5) | 2,560 (48.5) | 2,530 (52.5) | 3,370 (57) | 3,940 (59) |
| 135 | 1,430 (43.5) | 1,760 (45) | 2,020 (46) | 2,060 (50.5) | 2,850 (55) | 3,340 (57) |
| 140 | | 1,280 (43) | 1,520 (43.5) | 1,630 (48.5) | 2,360 (52.5) | 2,790 (55) |
| 145 | | | 1,060 (40.5) | 1,220 (46.5) | 1,900 (50.5) | 2,280 (53) |
| 150 | | | | | 1,480 (48.5) | 1,800 (50.5) |
| 155 | | | | | 1,090 (46.5) | 1,360 (48) |
| Min. boom angle for indicated length (no load) | 41° | 40° | 39° | 45° | 45° | 46° |
| Max. boom length at 0° boom angle (no load) | 97 ft. | | | 97 ft. | | |

1. 33 ft. and 56 ft. folding boom extension lengths may be used for single line lifting service only.
2. For main boom lengths less than 154 ft. with the boom extension erected, the rated loads are determined by boom angle. Use only the column which corresponds to the boom extension length and offset for which the machine is set up. For boom angles not shown, use rating of the next lower boom angle.
3. **WARNING:** Operation of this machine with heavier loads than the capacities listed is strictly prohibited. Machine tipping with boom extension occurs rapidly and without advance warning.
4. Boom angle is the angle above or below horizontal of the longitudinal axis of the boom base section after lifting rated load.
5. Capacities listed are with outriggers properly extended and vertical jacks set only.
6. When lifting over the main boom nose with 33 ft. or 56 ft. extension erected, the outriggers must be fully extended.

NOTE: () Boom angles are in degrees.

#RCL operating code. Refer to RCL manual for operating instructions.

*This capacity is based on maximum obtainable boom angle.

80081438A



33 - 56 FT. FOLDING BOOM EXT + 20' INSERT WITH 154 FT. MAIN BOOM - MODE X and M WITH 22000 lb CWT - ON OUTRIGGERS FULLY EXTENDED - 360°

| Radius in Feet | 76 ft. LENGTH (56' ext + 20' insert) | | |
|--|--------------------------------------|-----------------|-----------------|
| | 0° OFFSET | 20° OFFSET | 40° OFFSET |
| | #0184 | #0185 | #0186 |
| 40 | *6,190 (80) | | |
| 45 | 6,190 (79.5) | | |
| 50 | 6,190 (78.5) | | |
| 55 | 6,190 (77.5) | | |
| 60 | 6,190 (76) | *6,000 (80) | |
| 65 | 6,190 (75) | 6,000 (79.5) | |
| 70 | 6,190 (74) | 5,940 (78) | |
| 75 | 6,190 (72.5) | 5,760 (77) | 4,800 (80) |
| 80 | 6,190 (71.5) | 5,580 (75.5) | 4,800 (78.5) |
| 85 | 6,190 (70) | 5,420 (74.5) | 4,800 (77.5) |
| 90 | 6,190 (69) | 5,260 (73) | 4,740 (76) |
| 95 | 6,190 (68) | 5,130 (72) | 4,670 (74.5) |
| 100 | 6,090 (66.5) | 5,000 (70.5) | 4,610 (73) |
| 105 | 5,830 (65) | 4,880 (69.5) | 4,540 (71.5) |
| 110 | 5,100 (64) | 4,760 (68) | 4,480 (70.5) |
| 115 | 4,440 (62.5) | 4,650 (66.5) | 4,430 (69) |
| 120 | 3,840 (61) | 4,540 (65) | 4,380 (67.5) |
| 125 | 3,290 (59.5) | 4,150 (63.5) | 4,330 (66) |
| 130 | 2,780 (58) | 3,580 (61.5) | 4,220 (64) |
| 135 | 2,320 (56) | 3,060 (60) | 3,630 (62.5) |
| 140 | 1,900 (54.5) | 2,570 (58) | 3,080 (60.5) |
| 145 | 1,500 (52.5) | 2,130 (56) | 2,580 (58.5) |
| 150 | 1,140 (51) | 1,710 (54.5) | 2,110 (56.5) |
| 155 | | 1,320 (52.5) | 1,680 (54.5) |
| 160 | | | 1,270 (52.5) |
| Min. boom angle for indicated length (no load) | 50° | 51° | 51° |
| Max. boom length at 0° boom angle (no load) | 82 ft. | | |

NOTE: () Boom angles are in degrees.

#RCL operating code. Refer to RCL manual for operating instructions.

*This capacity is based on maximum obtainable boom angle.

1. The 56 ft. folding boom extension length may be used for single line lifting service only.
2. For main boom lengths less than 154 ft. with the boom extension erected, the rated loads are determined by boom angle. Use only the column which corresponds to the boom extension length and offset for which the machine is set up. For boom angles not shown, use rating of the next lower boom angle.
3. **WARNING:** Operation of this machine with heavier loads than the capacities listed is strictly prohibited. Machine tipping with boom extension occurs rapidly and without advance warning.
4. Boom angle is the angle above or below horizontal of the longitudinal axis of the boom base section after lifting rated load.
5. Capacities listed are with outriggers properly extended and vertical jacks set only.
6. When lifting over the main boom nose with the 56 ft. extension erected and 20 ft. insert, the outriggers must be fully extended.

80081445

GRT8090 - S/N 235803

31



ON RUBBER CAPACITIES

STATIONARY CAPACITIES - 360°

| Radius in feet | Main boom length in feet - RCL Code #9005 or #9105 | | | | | | |
|---|--|------------------|------------------|------------------|------------------|------------------|------------------|
| | 39.2 | 53.6 | 53.6 | 68.0 | 68.0 | 82.4 | 82.4 |
| Tele I | 0% | 50% | | 50% | | 50% | |
| Tele II | 0% | 0% | | 17% | | 33% | |
| Tele III | 0% | 0% | | 17% | | 33% | |
| Tele IV | 0% | 0% | | 17% | | 33% | |
| Mode | X & M | X | M | X | M | X | M |
| 20 | 24,050 (52) | 21,500 (63.5) | 21,500 (63.5) | 24,050 (69.5) | 21,250 (69.5) | 25,100 (73.5) | 22,050 (73.5) |
| 25 | 15,300 (42) | 14,150 (57.5) | 14,150 (57.5) | 16,200 (65) | 13,600 (65.5) | 17,450 (69.5) | 15,200 (70) |
| 30 | 10,150 (25) | 9,330 (50.5) | 9,330 (50.5) | 11,100 (60) | 8,650 (61.5) | 12,450 (66) | 10,500 (66) |
| 35 | | 5,870 (43.5) | 5,870 (43.5) | 7,640 (55) | 5,200 (56) | 8,970 (62) | 7,110 (62.5) |
| 40 | | 3,290 (34.5) | 3,290 (34.5) | 5,070 (50) | 2,670 (50.5) | 6,400 (58) | 4,500 (58.5) |
| 45 | | 1,270 (18.5) | 1,270 (18.5) | 3,100 (44) | | 4,420 (53.5) | 2,450 (54) |
| 50 | | | | 1,550 (37.5) | | 2,860 (49) | |
| 55 | | | | | | 1,600 (44) | |
| Minimum boom angle (°) for indicated length (no load) | | 0 | 0 | 36 | 43 | 43 | 48 |
| Maximum boom length at 0° boom angle (no load) - X and M modes | 53.6 ft. | | | | | | |

NOTE: () Boom angles are in degrees.

#RCL operating code. #9005 pertains to 27000 lb cwt and #9105 pertains to 22,000 lb cwt. Refer to RCL manual for operating instructions.

| Boom angle | Lifting capacities at 0° boom angle | | | | | | |
|---------------|-------------------------------------|------|------|------|------|------|------|
| | 39.2 | 53.6 | 53.6 | 68.0 | 68.0 | 82.4 | 82.4 |
| 0° | 8,860 (31.7) | | | | | | |

NOTE: () Reference radii in feet.

80081409

1. Capacities are in pounds and do not exceed 75% of tipping loads as determined by test in accordance with SAE J765.
2. Capacities are applicable to machines equipped with General / Titan 29.5x25 (34 ply) bias ply tires, at 76 psi cold inflation pressure.
3. Capacities are applicable only with machine on firm level surface.
4. On rubber lifting with boom extension not permitted.
5. For pick and carry operation, boom must be centered over front of machine, mechanical swing lock engaged and load restrained from swinging.
6. Axle lockouts must be functioning when lifting on rubber.
7. All lifting depends on proper tire inflation, capacity and condition. Capacities must be reduced for lower tire inflation pressures. See lifting capacity chart for tire used. Damaged tires are hazardous to safe operation of crane.
8. Creep - not over 200 ft. of movement in any 30 minute period and not exceeding 1 mph.



ON RUBBER CAPACITIES (cont'd.)

PICK & CARRY CAPACITIES (CREEP SPEED) - BOOM CENTERED OVER FRONT (See note 5)

| Radius in feet | Main boom length in feet - RCL Code #9006 or #9106 | | | | | | |
|---|--|------------------|------------------|------------------|------------------|------------------|------------------|
| | 39.2 | 53.6 | 53.6 | 68.0 | 68.0 | 82.4 | 82.4 |
| Tele I | 0% | 50% | | 50% | | 50% | |
| Tele II | 0% | 0% | | 17% | | 33% | |
| Tele III | 0% | 0% | | 17% | | 33% | |
| Tele IV | 0% | 0% | | 17% | | 33% | |
| Mode | X & M | X | M | X | M | X | M |
| 12 | 49,450 (66) | 42,150 (73) | 42,150 (73) | | | | |
| 15 | 40,450 (61) | 39,050 (69.5) | 38,500 (69) | 30,400 (74) | 27,200 (74) | | |
| 20 | 29,550 (52) | 29,100 (63.5) | 29,100 (63.5) | 27,300 (69.5) | 24,950 (69.5) | 24,350 (73.5) | 20,800 (73.5) |
| 25 | 21,850 (42) | 22,150 (57.5) | 22,150 (57.5) | 23,400 (65) | 22,700 (65.5) | 22,300 (69.5) | 19,050 (70) |
| 30 | 16,150 (25) | 16,850 (50.5) | 16,850 (50.5) | 18,550 (60) | 17,400 (61.5) | 20,250 (66) | 17,250 (66) |
| 35 | | 12,800 (43.5) | 12,800 (43.5) | 14,750 (55) | 13,300 (56) | 16,350 (62) | 13,550 (62.5) |
| 40 | | 9,640 (34.5) | 9,640 (34.5) | 11,700 (50) | 9,970 (50.5) | 13,250 (58) | 10,700 (58.5) |
| 45 | | 7,050 (18.5) | 7,050 (18.5) | 9,240 (44) | 7,270 (44.5) | 10,700 (53.5) | 8,260 (54) |
| 50 | | | | 7,110 (37.5) | 4,990 (37) | 8,460 (49) | 6,170 (49.5) |
| 55 | | | | 5,280 (29) | 3,060 (28) | 6,520 (44) | 4,380 (45) |
| 60 | | | | 3,780 (13) | 1,490 (12) | 4,940 (38) | 2,920 (39.5) |
| 65 | | | | | | 3,630 (31.5) | 1,720 (33) |
| 70 | | | | | | 2,520 (23) | |
| Minimum boom angle (°) for indicated length (no load) | | | | | | | 32 |
| Maximum boom length at 0° boom angle (no load) - X mode | | | | | | | 82.4 ft. |
| Maximum boom length at 0° boom angle (no load) - M mode | | | | | | | 68.0 ft. |

NOTE: () Boom angles are in degrees.

#RCL operating code. **#9006** pertains to 27000 lb cwt and **#9106** pertains to 22,000 lb cwt. Refer to RCL manual for operating instructions.

| Boom angle | Lifting capacities at 0° boom angle | | | | | | |
|---------------|-------------------------------------|-----------------|-----------------|-----------------|-----------------|-----------------|------|
| | 39.2 | 53.6 | 53.6 | 68.0 | 68.0 | 82.4 | 82.4 |
| 0° | 14,550 (31.7) | 6,540 (46.1) | 6,540 (46.1) | 3,650 (60.5) | 1,360 (60.5) | 1,600 (74.8) | |

NOTE: () Reference radii in feet.

80081412



| TIRE INFLATION - PSI (BAR) | | |
|------------------------------|-------------|---|
| SIZE (FRONT & REAR) | TRA CODE | LIFTING SERVICE , GENERAL TRAVEL AND EXTENDED TRAVEL |
| | | STATIC, CREEP & 2.5 MPH (4.0 km/h) |
| 29.5x25 (34) | E-3 | 76 (5.2) |