



Crane Rental • Heavy Machinery Moving • Project Management

sales@reliablecraneservice.com • 702-525-0840 or 702-400-2516



900 SERIES MODEL 9299 CRAWLER CRANE WITH 92H BOOM

LIFT RATINGS

With 92H Tubular Boom and "P-P" Counterweight (105,000 lbs.) (47628 Kgs.)

Boom Length (Feet)	Radius In Feet	Boom Angle Degrees	Side Frames Retracted (Lbs.)	Side Frames Extended (Lbs.)	Fl. From Boom Point	Min. Load Line
70 feet	16	82.2	—	330000	77	9
	17	81.4	—	322010	76	9
	20	78.9	—	240620	75	7
	25	74.7	—	168130	74	5
	30	70.4	109190	128280	73	4
	35	65.9	88500	103130	71	3
	40	61.3	73890	85680	68	3
	50	51.3	54860	63280	61	2
	60	39.5	42850	49370	51	2
	70	23.2	34600	39910	34	2
80 feet	18	81.8	—	289530	86	8
	20	80.3	—	240520	86	7
	25	76.6	140890	167950	85	5
	30	72.9	108910	128060	83	4
	35	69.1	88210	102880	81	3
	40	65.2	73590	85410	79	3
	50	56.9	54570	63020	74	2
	60	47.7	42540	49090	66	2
	70	36.8	34310	39630	55	2
	80	21.6	28350	32840	36	1
90 feet	20	81.4	—	240260	96	7
	25	78.2	140490	167630	95	5
	30	74.9	108490	127690	94	4
	35	71.5	87800	102510	92	3
	40	68.1	73150	85000	90	3
	50	61.0	54130	62610	85	2
	60	53.3	42100	48670	79	2
	70	44.8	33850	39200	70	2
	80	34.6	27960	32460	58	1
	90	20.3	23350	27230	38	1
100 feet	21	81.7	181770	221180	106	6
	25	79.4	140130	167320	105	5
	30	76.4	108120	127370	104	4
	35	73.4	87410	102160	103	3
	40	70.4	72760	84650	101	3
	50	64.2	53750	62250	97	2
	60	57.5	41710	48300	91	2
	70	50.4	33450	38810	84	2
	80	42.3	27600	32110	74	1
	90	32.7	23000	26890	61	1
100	19.2	19360	22790	40	1	
110 feet	22	81.9	168890	204500	116	6
	25	80.3	139730	166990	115	5
	30	77.7	107700	127000	114	4
	35	75.0	87000	101790	113	3
	40	72.3	73320	84240	112	3
	50	66.7	53330	61850	108	2
	60	60.8	41280	47880	103	2
	70	54.6	33020	38390	96	2
	80	47.8	27190	31710	88	1
	90	40.2	22600	26500	78	1
100	31.1	18970	22410	64	1	
110	18.2	16030	19090	41	1	

METRIC

Boom Length (Meters)	Radius In Meters	Boom Angle Degrees	Side Frames Retracted (Kgs.)	Side Frames Extended (Kgs.)	Meters From Boom Point	Min. Load Line
21.3 meters	4.9	82.2	—	140890	23.5	9
	5.2	81.4	—	140130	23.2	9
	6.1	78.9	—	109150	22.9	7
	7.6	74.7	—	76260	22.6	5
	9.1	70.4	49530	58190	22.3	4
	10.7	65.9	40140	46780	21.6	3
	12.2	61.3	33520	38860	20.7	3
	15.2	51.3	24880	28700	18.6	2
	18.3	39.5	19440	22390	15.5	2
	21.3	23.2	15690	16100	10.4	2
24.4 meters	5.5	81.8	—	131330	26.2	8
	6.1	80.3	—	109100	26.2	7
	7.6	76.6	63910	78180	25.9	5
	9.1	72.9	49400	58690	25.3	4
	10.7	69.1	40010	46670	24.7	3
	12.2	65.2	33380	38740	24.1	3
	15.2	56.9	24750	28590	22.6	2
	18.3	47.7	19300	22270	20.1	2
	21.3	36.8	15560	17980	16.8	2
	24.4	21.6	12860	14900	11.0	1
27.4 meters	6.1	81.4	—	108980	29.3	7
	7.6	78.2	63730	76040	29.0	5
	9.1	74.9	49210	57920	28.7	4
	10.7	71.5	39830	46500	28.0	3
	12.2	68.1	33180	38560	27.4	3
	15.2	61.0	24550	28400	25.9	2
	18.3	53.3	19100	22080	24.1	2
	21.3	44.8	15350	17780	21.3	2
	24.4	34.6	12680	14720	17.7	1
	27.4	20.3	10590	12350	11.6	1
30.5 meters	6.4	81.7	82450	100330	32.3	6
	7.6	79.4	63560	75900	32.0	5
	9.1	76.4	49040	57780	31.7	4
	10.7	73.4	39650	46340	31.4	3
	12.2	70.4	33000	38400	30.8	3
	15.2	64.2	24380	28240	29.6	2
	18.3	57.5	18920	21910	27.7	2
	21.3	50.4	15170	17800	25.6	2
	24.4	42.3	12520	14570	22.6	1
	27.4	32.7	10430	12200	18.6	1
30.5	19.2	8780	10340	12.2	1	
33.5 meters	6.7	81.9	76610	92760	35.4	6
	7.6	80.3	63380	75750	35.1	5
	9.1	77.7	48850	57610	34.7	4
	10.7	75.0	39460	45170	34.4	3
	12.2	72.3	33260	38210	34.1	3
	15.2	66.7	24190	28060	32.9	2
	18.3	60.8	18720	21720	31.4	2
	21.3	54.6	14980	17410	29.3	2
	24.4	47.8	12330	14380	26.8	1
	27.4	40.2	10250	12020	23.8	1
30.5	31.1	8600	10170	19.5	1	
33.5	18.2	7270	8660	12.5	1	

(Continued)

FORM NO. 9299-C92HR-4

FOR REFERENCE USE ONLY!

Please consult Reliable Crane Service for more information.

702-400-2516 or 702-525-0840
sales@reliablecraneservice.com

www.reliablecraneservice.com



LIFT RATINGS

With 92H Tubular Boom and "P-P" Counterweight (105,000 lbs.) (47628 Kgs.)

Boom Length (Feet)	Radius In Feet	Boom Angle Degrees	Side Frames Retracted (Lbs.)	Side Frames Extended (Lbs.)	Ft. From Boom Point	Min. Load Line
120 feet	24	81.6	148560	178150	125	5
	25	81.2	139890	167130	125	5
	30	78.7	107850	127140	124	4
	35	76.3	87180	101960	123	3
	40	73.8	72500	84410	122	3
	50	68.7	53520	62040	119	2
	60	63.5	41470	48070	114	2
	70	58.0	33210	38580	108	2
	80	52.1	27420	31940	101	1
	90	45.7	22830	26730	93	1
	100	38.4	19220	22650	81	1
	110	29.7	16290	19350	66	1
120	17.4	13880	16630	43	1	
130 feet	25	81.8	139500	166800	135	5
	30	79.6	107460	126790	135	4
	35	77.3	86780	101600	134	3
	40	75.1	72090	84030	132	3
	50	70.4	53110	61650	129	2
	60	65.7	41050	47670	125	2
	70	60.7	32790	38170	120	2
	80	55.5	27020	31550	114	1
	90	49.9	22430	26340	106	1
	100	43.8	18810	22250	97	1
	110	36.8	15890	18960	85	1
	120	28.5	13490	16250	69	1
130	16.7	11460	13980	44	1	
140 feet	27	81.6	124200	147750	145	5
	30	80.4	106990	126380	145	4
	35	78.3	86320	101180	144	3
	40	76.2	71600	83570	143	3
	50	71.9	52630	61200	140	2
	60	67.5	40550	47190	136	2
	70	63.0	32290	37090	131	2
	80	58.3	26540	31090	126	1
	90	53.3	21950	25870	119	1
	100	47.9	18330	21790	111	1
	110	42.1	15410	18490	101	1
	120	35.4	13000	15780	88	1
130	27.4	10980	13510	71	1	
140	16.1	9260	11580	46	1	
150 feet	28	81.8	117710	139760	155	4
	30	81.0	106560	125990	155	4
	35	79.1	85880	100770	154	3
	40	77.1	71150	83150	153	3
	50	73.1	52190	60770	150	2
	60	69.1	40100	46750	147	2
	70	64.9	31820	37240	143	2
	80	60.6	26100	30670	137	1
	90	56.1	21500	25440	131	1
	100	51.3	17890	21350	124	1
	110	46.2	14970	18060	115	1
	120	40.6	12560	15340	104	1
130	34.2	10550	13090	91	1	
140	26.5	8830	11160	74	1	
150	15.5	7350	9500	47	1	
160 feet	29	81.9	111400	132150	165	4
	30	81.6	106110	125580	165	4
	35	79.8	85430	100360	164	3
	40	77.9	70690	82720	163	3
	50	74.2	51730	60340	161	2
	60	70.5	39630	46300	158	2
	70	66.6	31340	36780	154	2
	80	62.6	25640	30220	149	1
	90	58.5	21040	24990	143	1
	100	54.1	17430	20900	136	1
	110	49.6	14510	17610	129	1
	120	44.6	12100	14900	119	1
130	39.2	10090	12630	108	1	
140	33.0	8370	10700	94	1	
150	25.6	6890	9050	76	1	
160	15.0	5610	7620	48	1	

METRIC

Boom Length (Meters)	Radius In Meters	Boom Angle Degrees	Side Frames Retracted (Kgs.)	Side Frames Extended (Kgs.)	Meters From Boom Point	Min. Load Line
30.6 meters	7.3	81.6	67390	80810	38.1	5
	7.6	81.2	63450	75810	38.1	5
	9.1	78.7	48920	57670	37.8	4
	10.7	76.3	39540	46250	37.5	3
	12.2	73.8	32890	38290	37.2	3
	15.2	68.7	24280	28140	36.3	2
	18.3	63.5	18810	21800	34.7	2
	21.3	58.0	15060	17500	32.9	2
	24.4	52.1	12440	14490	30.8	1
	27.4	45.7	10360	12120	28.3	1
	30.5	38.4	8720	10270	24.7	1
	33.5	29.7	7390	8780	20.1	1
36.6	17.4	6300	7540	13.1	1	
39.6 meters	7.6	81.8	63280	75660	41.1	5
	9.1	79.6	48740	57510	41.1	4
	10.7	77.3	39360	46090	40.8	3
	12.2	75.1	32700	38120	40.2	3
	15.2	70.4	24090	27960	39.3	2
	18.3	65.7	18620	21620	38.1	2
	21.3	60.7	14870	17310	36.6	2
	24.4	55.5	12260	14310	34.7	1
	27.4	49.9	10170	11950	32.3	1
	30.5	43.8	8530	10090	29.6	1
	33.5	36.8	7210	8660	25.9	1
	36.6	28.5	6120	7370	21.0	1
39.6	16.7	5200	6340	13.4	1	
42.7 meters	8.2	81.6	56340	67020	44.2	5
	9.1	80.4	48530	57330	44.2	4
	10.7	78.3	39150	45900	43.9	3
	12.2	76.2	32480	37910	43.6	3
	15.2	71.9	23870	27760	42.7	2
	18.3	67.5	18390	21410	41.5	2
	21.3	63.0	14650	16820	39.9	2
	24.4	58.3	12040	14100	38.4	1
	27.4	53.3	9960	11730	36.3	1
	30.5	47.9	8310	9880	33.8	1
	33.5	42.1	6990	8390	30.8	1
	36.6	35.4	5900	7160	26.8	1
39.6	27.4	4980	6130	21.6	1	
42.7	16.1	4200	5250	14.0	1	
45.7 meters	8.5	81.8	53390	63400	47.2	4
	9.1	81.0	48340	57150	47.2	4
	10.7	79.1	38960	45710	46.9	3
	12.2	77.1	32270	37720	46.6	3
	15.2	73.1	23670	27570	45.7	2
	18.3	69.1	18190	21210	44.8	2
	21.3	64.9	14430	16890	43.6	2
	24.4	60.6	11840	13910	41.8	1
	27.4	56.1	9750	11540	39.9	1
	30.5	51.3	8110	9680	37.8	1
	33.5	46.2	6790	8190	35.1	1
	36.6	40.6	5700	6960	31.7	1
39.6	34.2	4790	5940	27.7	1	
42.7	26.5	4010	5060	22.6	1	
45.7	15.5	3330	4310	14.3	1	
48.8 meters	8.8	81.9	50530	59940	50.3	4
	9.1	81.6	48130	56960	50.3	4
	10.7	79.8	38750	45520	50.0	3
	12.2	77.9	32060	37520	49.7	3
	15.2	74.2	23460	27370	49.1	2
	18.3	70.5	17980	21000	48.2	2
	21.3	66.6	14220	16680	46.9	2
	24.4	62.6	11630	13710	45.4	1
	27.4	58.5	9540	11340	43.6	1
	30.5	54.1	7910	9480	41.5	1
	33.5	49.6	6580	7990	39.3	1
	36.6	44.6	5490	6760	36.3	1
39.6	39.2	4580	5730	32.9	1	
42.7	33.0	3800	4850	28.7	1	
45.7	25.6	3130	4110	23.2	1	
48.8	15.0	2540	3460	14.6	1	



LIFT RATINGS (cont.)

With 92H Tubular Boom and "P-P" Counterweight (105,000 lbs.) (47628 Kgs.)

METRIC

Boom Length (Feet)	Radius In Feet	Boom Angle Degrees	Side Frames Retracted (Lbs.)	Side Frames Extended (Lbs.)	Ft. From Boom Point	Min. Load Line
170 feet	31	81.7	101150	119500	175	4
	35	80.4	85390	100290	174	3
	40	78.6	70640	82650	173	3
	50	75.2	51690	60290	171	2
	60	71.7	39600	46260	168	2
	70	68.0	31310	36730	164	2
	80	64.4	25630	30200	160	1
	90	60.5	21040	24980	155	1
	100	56.6	17420	20890	149	1
	110	52.4	14510	17600	141	1
	120	48.0	12100	14890	133	1
	130	43.2	10080	12620	123	1
	140	38.0	8370	10700	111	1
	150	32.0	6890	9040	97	1
160	24.8	5610	7610	78	1	
170	14.5	4480	6350	49	1	
180 feet	32	81.9	96210	113610	185	4
	35	80.9	84970	99910	184	3
	40	79.3	70200	82250	184	3
	50	76.0	51260	59880	181	2
	60	72.7	39160	45830	179	2
	70	69.3	31250	36690	175	2
	80	65.9	25200	29780	171	1
	90	62.3	20600	24560	166	1
	100	58.6	16980	20460	160	1
	110	54.8	14070	17170	154	1
	120	50.8	11660	14460	146	1
	130	46.5	9650	12190	137	1
	140	41.9	7930	10260	127	1
	150	36.9	6450	8610	115	1
160	31.1	5170	7180	100	1	
170	24.1	4050	5920	80	1	
180	14.1	3060	4820	51	1	
190 feet	33	82.0	92000	108540	195	3
	35	81.4	84510	99500	195	3
	40	79.9	69720	81800	194	3
	50	76.8	50780	59430	192	2
	60	73.6	38670	45370	189	2
	70	70.5	30770	36220	186	1
	80	67.2	24720	29310	182	1
	90	63.9	20120	24080	177	1
	100	60.5	16500	19990	172	1
	110	56.9	13580	16690	166	1
	120	53.2	11170	13980	159	1
	130	49.3	9160	11710	151	1
	140	45.2	7440	9780	142	1
	150	40.7	5960	8120	131	1
160	35.8	4670	6690	118	1	
170	30.2	3550	5430	102	1	
180	23.4	0	4330	82	1	
190	13.7	0	3350	52	1	
200 feet	35	81.8	84080	99100	205	3
	40	80.4	69270	81380	204	3
	50	77.4	50340	59010	202	2
	60	74.5	38200	44920	199	2
	70	71.5	30330	35880	196	1
	80	68.4	24270	28880	193	1
	90	65.3	19670	23640	188	1
	100	62.1	16040	19540	183	1
	110	58.8	13120	16230	178	1
	120	55.4	10710	13520	171	1
	130	51.8	8680	11250	164	1
	140	48.0	6970	9320	155	1
	150	44.0	5500	7670	146	1
	160	39.7	4210	6230	134	1
170	34.9	3080	4970	121	1	
180	29.4	—	3860	105	1	
210 feet	36	81.9	80260	94630	215	3
	40	80.8	68810	80950	214	3
	50	78.1	49880	58560	212	2
	60	75.2	37730	44460	210	2

Boom Length (Meters)	Radius In Meters	Boom Angle Degrees	Side Frames Retracted (Kgs.)	Side Frames Extended (Kgs.)	Meters From Boom Point	Min. Load Line
51.8 meters	9.4	81.7	45880	54210	53.3	4
	10.7	80.4	38730	45490	53.0	3
	12.2	78.6	32040	37490	52.7	3
	15.2	75.2	23450	27350	52.1	2
	18.3	71.7	17960	20980	51.2	2
	21.3	68.0	14200	16660	50.0	2
	24.4	64.4	11630	13700	48.8	1
	31.8	60.5	9540	11330	47.2	1
	36.5	56.6	7900	9480	45.4	1
	33.5	52.4	6580	7980	43.0	1
	36.6	48.0	5490	6750	40.5	1
	39.6	43.2	4570	5720	37.5	1
	42.7	38.0	3800	4850	33.8	1
	45.7	32.0	3130	4100	29.6	1
48.8	24.8	2540	3450	23.8	1	
51.8	14.5	2030	2880	14.9	1	
54.9 meters	9.8	81.9	43640	51530	56.4	4
	10.7	80.9	36540	45320	56.1	3
	12.2	79.3	31840	37310	56.1	3
	15.2	76.0	23250	27160	55.2	2
	18.3	72.7	17260	20790	54.6	2
	21.3	69.3	14180	16640	53.3	2
	24.4	65.9	11430	13510	52.1	1
	27.4	62.3	9340	11140	50.6	1
	30.5	58.6	7700	9280	48.8	1
	33.5	54.8	6380	7790	46.9	1
	36.6	50.8	5290	6660	44.5	1
	39.6	46.5	4380	5530	41.8	1
	42.7	41.9	3600	4650	38.7	1
	45.7	36.9	2930	3910	35.1	1
48.8	31.1	2350	3260	30.5	1	
51.8	24.1	1840	2690	24.4	1	
54.9	14.1	1390	2190	15.5	1	
57.9 meters	10.1	82.0	41730	49230	59.4	3
	10.7	81.4	38330	45130	59.4	3
	12.2	79.9	31620	37100	59.1	3
	15.2	76.8	23030	26960	58.5	2
	18.3	73.6	17540	20580	57.6	2
	21.3	70.5	13960	16430	56.7	1
	24.4	67.2	11210	13300	55.5	1
	27.4	63.9	9130	10920	53.9	1
	30.5	60.5	7480	9070	52.4	1
	33.5	56.9	6160	7570	50.6	1
	36.6	53.2	5070	6340	48.5	1
	39.6	49.3	4150	5310	46.0	1
	42.7	45.2	3370	4440	43.3	1
	45.7	40.7	2700	3680	39.9	1
48.8	35.8	2120	3030	36.0	1	
51.8	30.2	1610	2460	31.1	1	
54.9	23.4	0	1960	25.0	1	
57.9	13.7	0	1520	15.8	1	
61.0 meters	10.7	81.8	38140	44950	62.5	3
	12.2	80.4	31420	36910	62.2	3
	15.2	77.4	22830	26770	61.6	2
	18.3	74.5	17330	20380	60.7	2
	21.3	71.5	13760	16280	59.7	1
	24.4	68.4	11010	13100	58.8	1
	27.4	65.3	8920	10720	57.3	1
	30.5	62.1	7280	8860	55.8	1
	33.5	58.8	5950	7360	54.3	1
	36.6	55.4	4860	6130	52.1	1
	39.6	51.8	3940	5100	50.0	1
	42.7	48.0	3160	4230	47.2	1
	45.7	44.0	2490	3480	44.5	1
	48.8	39.7	1910	2830	40.8	1
51.8	34.9	1400	2250	36.9	1	
54.9	29.4	—	1750	32.0	1	
64.0 meters	11.0	81.9	36410	42920	65.5	3
	12.2	80.8	31210	36720	65.2	3
	15.2	78.1	22630	26560	64.6	2
	18.3	75.2	17110	20170	64.0	2



LIFT RATINGS (cont.)

With 92H Tubular Boom and "P-P" Counterweight (105,000 lbs.) (47628 Kgs.)

METRIC

Boom Length (Feet)	Radius in Feet	Boom Angle Degrees	Side Frames Retracted (Lbs.)	Side Frames Extended (Lbs.)	FL From Boom Point	Min. Load Line
210 feet	70	72.4	29870	35350	207	1
	80	69.5	23810	28420	203	1
	90	66.6	19200	23180	199	1
	100	63.5	15570	19070	195	1
	110	60.4	12650	15780	189	1
	120	57.2	10240	13060	183	1
	130	53.9	8220	10790	176	1
	140	50.4	6490	8850	169	1
	150	46.8	5010	7190	160	1
	160	42.9	3740	5760	150	1
170	38.7	—	4510	138	1	
180	34.0	—	3390	124	1	
220 feet	38	81.8	74010	87160	225	3
	40	81.3	68640	80760	224	3
	50	78.6	49730	58400	222	2
	60	75.9	37580	44300	220	2
	70	73.2	29750	35220	217	1
	80	70.5	23690	28300	214	1
	90	67.7	19080	23060	210	1
	100	64.8	15450	18950	206	1
	110	61.9	12520	15640	201	1
	120	58.9	10110	12920	195	1
130	55.8	8090	10660	189	1	
140	52.6	6370	8720	181	1	
150	49.2	4890	7070	173	1	
160	45.6	3610	5630	164	1	
170	41.8	—	4380	153	1	
180	37.7	—	3270	141	1	
230 feet	39	81.9	70810	83460	234	3
	40	81.6	68210	80360	234	3
	50	79.1	49300	57990	233	2
	60	76.6	37130	43870	230	2
	70	74.0	29320	34810	228	1
	80	71.4	23250	27870	225	1
	90	68.7	18630	22620	221	1
	100	66.0	15010	18510	217	1
	110	63.2	12080	15200	212	1
	120	60.4	9660	12480	207	1
130	57.5	7650	10220	201	1	
140	54.5	5920	8280	194	1	
150	51.3	4440	6630	186	1	
160	48.0	3160	5190	178	1	
170	44.6	—	3920	168	1	

Boom Length (Meters)	Radius in Meters	Boom Angle Degrees	Side Frames Retracted (Kgs.)	Side Frames Extended (Kgs.)	Meters From Boom Point	Min. Load Line
64.0 meters	21.3	72.4	13550	16030	63.1	1
	24.4	69.5	10800	12890	61.9	1
	27.4	66.6	8710	10510	60.7	1
	30.5	63.5	7060	8650	59.4	1
	33.5	60.4	5740	7160	57.6	1
	36.6	57.2	4640	5920	55.8	1
	39.6	53.9	3730	4890	53.6	1
	42.7	50.4	2940	4010	51.5	1
	45.7	46.8	2270	3260	48.8	1
	48.8	42.9	1700	2610	45.7	1
51.8	38.7	—	2050	42.1	1	
54.9	34.0	—	1540	37.8	1	
67.1 meters	11.6	81.8	33570	39540	66.6	3
	12.2	81.3	31140	36630	66.3	3
	15.2	78.6	22560	26490	67.7	2
	18.3	75.9	17050	20090	67.1	2
	21.3	73.2	13490	15980	66.1	1
	24.4	70.5	10750	12840	65.2	1
	27.4	67.7	8650	10460	64.0	1
	30.5	64.8	7010	8660	62.8	1
	33.5	61.9	5680	7090	61.3	1
	36.6	58.9	4590	5860	59.4	1
39.6	55.8	3670	4840	57.6	1	
42.7	52.6	2890	3960	55.2	1	
45.7	49.2	2220	3210	52.7	1	
48.8	45.6	1640	2550	50.0	1	
51.8	41.8	—	1990	46.6	1	
54.9	37.7	—	1480	43.0	1	
70.1 meters	11.9	81.9	32120	37880	71.3	3
	12.2	81.6	30940	36450	71.3	3
	15.2	79.1	22360	26300	71.0	2
	18.3	76.6	16840	19900	70.1	2
	21.3	74.0	13300	15790	69.5	1
	24.4	71.4	10550	12640	68.6	1
	27.4	68.7	8450	10260	67.4	1
	30.5	66.0	6810	8400	66.1	1
	33.5	63.2	5480	6890	64.6	1
	36.6	60.4	4380	5660	63.1	1
39.6	57.5	3470	4640	61.3	1	
42.7	54.5	2690	3760	59.1	1	
45.7	51.3	2010	3010	56.7	1	
48.8	48.0	1430	2350	54.3	1	
51.8	44.6	—	1790	51.2	1	

9299.49

CRANE RATING DATA

Load ratings are in pounds (kilograms) and do not exceed 75% of the load which would cause tipping with crane standing level on firm uniformly supporting surface. Safe loads depend on ground conditions, boom lengths, radius of operation, and proper handling, all of which must be taken into consideration by user.

"Radius in feet (meters)" is the horizontal distance at crane base level from center of rotation to a vertical line through the center of gravity of the suspended load.

Lifting is approved only in those areas for which ratings are shown in the rating chart. Blocks, slings, buckets, and other load carrying devices are considered part of the load. Retractable A-frame must be in fully raised position for all ratings. Ratings in shaded areas are limited by strength of material, or factors other than stability.

Main load line is 1-1/8 inch (2.8 cm) diameter with a minimum breaking strength of 130,000 pounds (58,970 kilograms). Boom suspension line is 7/8 inch (2.2 cm) diameter with a minimum breaking strength of 79,600 pounds (36,110 kilograms). Boom suspension pendants are 1-3/8 inch (3.5 cm) diameter with a minimum breaking strength of 211,000 pounds (95,700 kilograms).

Boom and jib erection is over the end of the machine with idler tumblers blocked and with "Lift Rating" counterweight.

Designed and rated to comply with ANSI Code B30.5.



LOAD HOISTING DATA

METRIC

Maximum Lifting Capacity in Pounds	Parts of Minimum Parts of Load Line	Maximum Hoisting Distance		
		RH Drum with Controlled Load Lowering Ft.	LH Drum with Controlled Load Lowering Ft.	LH Drum without Controlled Load Lowering Ft.
330,000	9	93	47	71
297,130	8	104	52	80
259,990	7	119	60	92
222,850	6	139	70	107
185,710	5	167	84	129
148,560	4	209	105	161
111,420	3	279	141	215
74,280	2	419	211	323
37,410	1	839	423	647

*Based on 1-1/8" EIPS Rope.

Maximum Lifting Capacity in Kilograms	Parts of Minimum Parts of Load Line	Maximum Hoisting Distance		
		RH Drum with Controlled Load Lowering M	LH Drum with Controlled Load Lowering M	LH Drum without Controlled Load Lowering M
149688	9	26	14	22
134780	8	32	16	24
117930	7	36	18	28
101080	6	42	21	33
84240	5	51	25	39
67390	4	64	32	49
50540	3	85	43	66
33690	2	126	64	98
16850	1	256	129	197

*Based on 2 8 cm EIPS Rope.

92H BOOM COMPOSITION

Boom Length		30 Ft. (9.2 M)	20 Ft. (6.1 M)	10 Ft. (3.0 M)	50 Ft. (15.2 M)	40 Ft. (12.2 M)
Ft.	M	92HT Inner	92HT Center	92ST Center	92S Center	92H Outer
70	21.3	1	—	—	—	1
80	24.4	1	—	1	—	1
90	27.4	1	1	—	—	1
100	30.5	1	1	1	—	1
110	33.5	1	1	2	—	1
120	36.6	1	—	—	1	1
130	39.6	1	—	1	1	1
140	42.7	1	1	—	1	1
150	45.7	1	1	1	1	1
160	48.8	1	1	2	1	1
170	51.8	1	—	—	2	1
180	54.9	1	—	1	2	1
190	57.9	1	1	—	2	1
200	61.0	1	1	1	2	1
210	64.0	1	1	2	2	1
220	67.1	1	—	—	3	1
230	70.1	1	—	1	3	1

GROUND PRESSURE

Lifting Crane with 70 ft. (21.3 m) basic boom and 105,000 lb. (47628 kg.) counterweight:

38" Shoes (96.5 m Shoes)	44" Shoes (111.7 m Shoes)	50" Shoes (127 m Shoes)
15.5 PSI (106.9 KPa)	13.4 PSI (92.4 KPa)	11.9 PSI (82.1 KPa)

WEIGHTS

Lift crane with basic 70 ft. (21.33 m) crane boom:

38" Shoes (96.5 m Shoes)	44" Shoes (111.7 m Shoes)	50" Shoes (127 m Shoes)
305,525# (138586 kgs.)	307,680# (139563 kgs.)	311,280# (141196 kgs.)

NOTE: In accordance with varying material situations and the Company's policy of constant product improvement these specifications subject to change without notice and without incurring responsibility to units previously sold.

BOOM AND JIB ERECTION

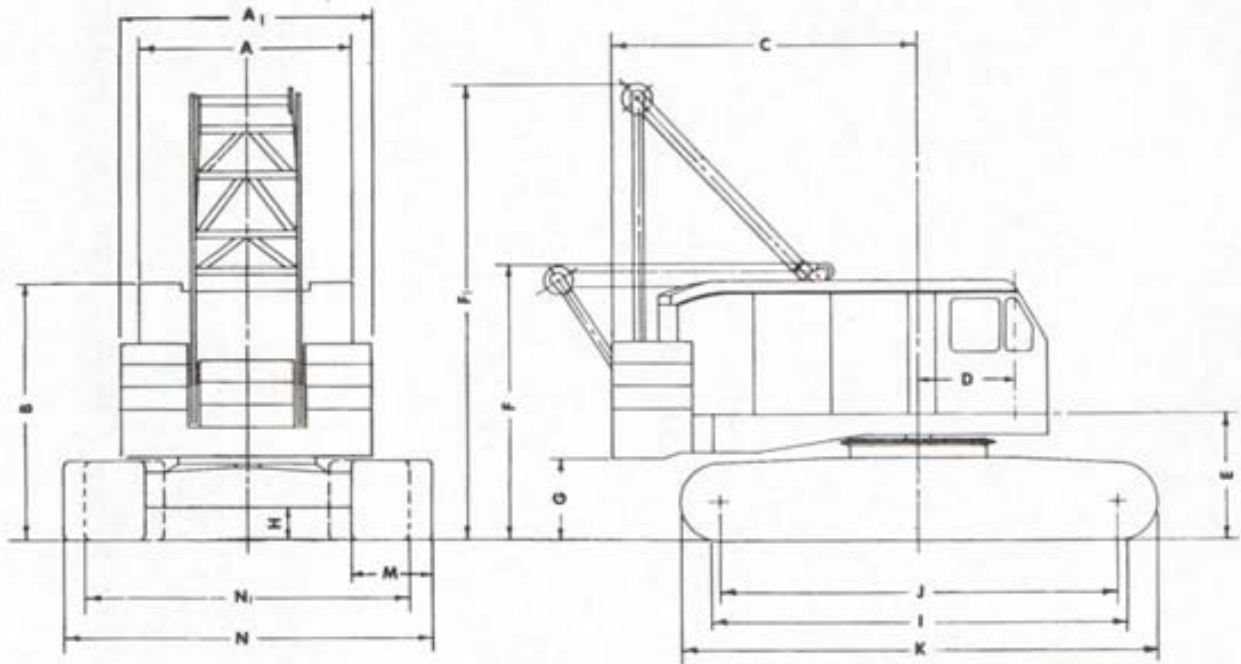
METRIC

92H Boom Length Ft.	Maximum Jib Length			
	No. 9 Ft.	No. 9HL Ft.	No. 15 Ft.	No. 16HL Ft.
230	0	0	0	0
220	50	80	50	70
210				100

92H Boom Length M	Maximum Jib Length			
	No. 9 M	No. 9HL M	No. 15 M	No. 16HL M
70.1	0	0	0	0
67.1	15.2	24.3	15.2	21.3
64.0				30.5



AMERICAN MODEL 9299 CRAWLER CRANE



GENERAL DIMENSIONS

	Ft.	M		Ft.	M
A. Width of Cab	11'0"	3.35	M. Width of tread shoes (ST.d.)	44"	1.12
A ₁ . Width over counterweight	13'2"	4.01	Width of tread shoes (Opt.)	38"	.97
B. Height over cab	13'7-1/8"	4.14	Width of tread shoes (Opt.)	50"	1.27
C. Tailswing	17'0"	5.18	N. Overall width over crawlers		
D. Center of pivot to center of boom foot			Extended (with 38" shoes)	18'3"	5.55
E. Ground to center boom foot	5'0-3/4"	1.53	Overall width over crawlers		
F. Height over A-frame, Lowered	6'9-1/8"	2.05	Extended (with 44" shoes)	18'9"	5.71
F ₁ . Height over A-frame, Raised	14'6-3/4"	4.43	Overall width over crawlers		
G. Ground to bottom of counterweight	24'6-1/8"	7.46	Extended (with 50" shoes)	19'3"	5.87
H. Minimum ground clearance under crawler base	4'4-3/8"	1.32	N ₁ . Overall width over crawlers		
I. Crawler bearing length	1'9"	.52	Retracted (with 38" shoes)	15'9"	4.80
J. Center to center crawler tumbler	22'1-1/2"	6.74	Overall width over crawlers		
K. Overall length of crawlers	22'1-1/2"	6.74	Retracted (with 44" shoes)	16'3"	4.95
			Overall width over crawlers		
			Retracted (with 50" shoes)	16'9"	5.10

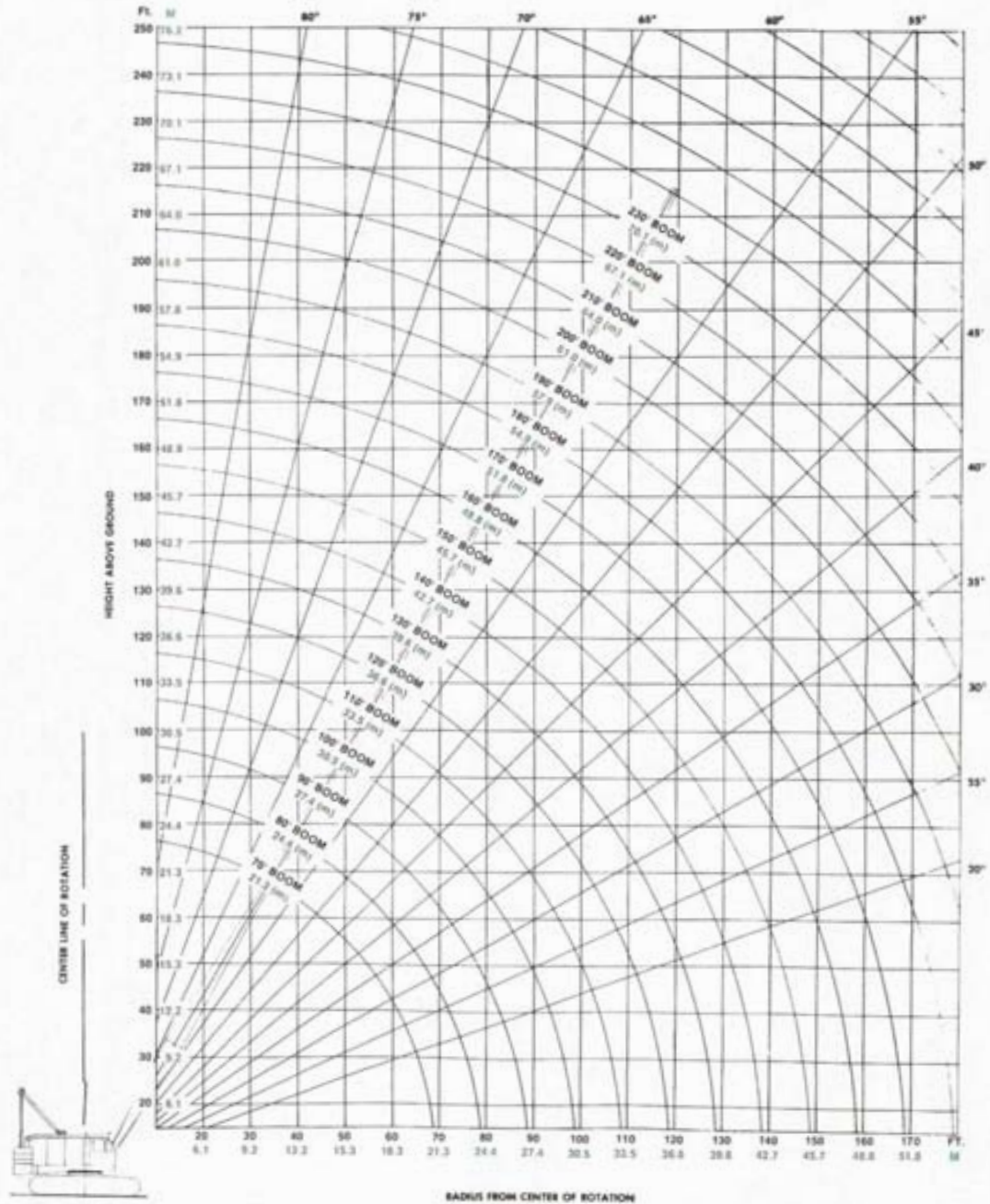
PERFORMANCE

TRAVEL SPEED:	0.8 MPH	1.29 KmPH		Lbs.	Kgs.
SWING SPEED:	2.28 RPM	2.28 RPM	Components removable for shipment:		
SINGLE LINE SPEED:			Counterweight	105,000	47628
Crane, Clam	165 FPM	50.29 MPM	Boom outer	10,070	4567
Dragline	145 FPM	44.19 MPM	Boom inner	6,200	2812
Magnet, Drag-Hoist	200 FPM	60.96 MPM	Telescopic boom stops	300	136
Third Drum	192 FPM	58.52 MPM	Outer bail assembly	2,450	1111
of	142 FPM	43.28 MPM	A-frame	3,900	1769
LINE PULL:			Side frames, 44" shoes(2)	67,400	30572
Crane, Clam	40,000 lbs. SLP	18140 kgs.	Crawler axles (4)	11,680	5298
Dragline	45,000 lbs. SLP	20430 kgs.	Torque tubes (2)	920	417
Magnet, Drag-Hoist	33,000 lbs. SLP	14980 kgs.	Carbody	24,200	10977
Third Drum	15,000 lbs. SLP	6810 kgs.			
of	21,000 lbs. SLP	9530 kgs.			

Performance figures are based on machine equipped with standard engine.



BOOM ANGLE DIAGRAM



AMERICAN MODEL 9299 CRAWLER CRANE WORKING RANGES

FOR REFERENCE USE ONLY!

Please consult Reliable Crane Service for more information.

702-400-2516 or 702-525-0840
sales@reliablecraneservice.com