



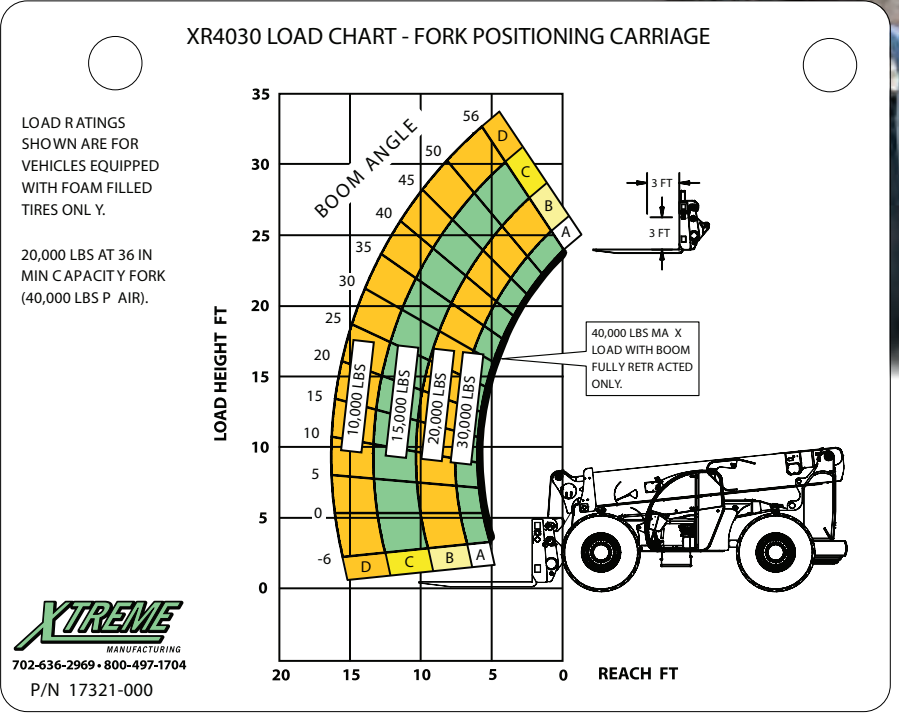
XTREME XR4030

MANUFACTURING

- Capacity 40,000 lbs
- Max Lift Height 30'
- Forward Reach. 16' 4"
- Frame Leveling L/R. 8°
- Weight. 63,000 lbs
- Engine Perkins 173 hp
- Fuel Capacity. 72 gal
- Tires Foam Filled
23.5 R25
- GPM 49
- PSI. 4,000
- Hydraulic Oil Cap 58 gal
- Length to fork face 22' 4"
- Width. 118"
- Height 9' 10"
- Wheel Base 148"
- Ground Clearance. 18"
- Turning Radius. 21' 11"
- Warranty Xtreme 10-5-2



40,000lbs Capacity
30ft Lift Height
173 hp

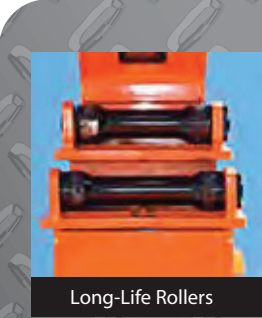


STANDARD FEATURES

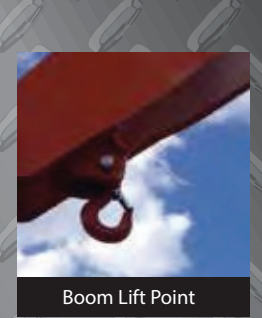
- The **XTREME** Difference
-
- 360° Visibility
 - Long Life Boom Rollers
 - Suspension Seat
 - Easy Service Access
 - Protected Tilt & Extend Cylinders
 - Steel Hydraulic & Fuel Tanks
 - Long Life Lexan Labels
 - Fiberglass Hoods
 - Heavy Duty Boom Chains
 - Suspended Pedals
 - Electrical Ring Terminals
 - Wider Outrigger Stance
 - Large Capacity Fuel Tanks
 - Trunnion Mounted Sway Cylinders
 - Melonite Pins
 - Rear Axle Stabilization (RAS)
 - Center Mounted Power Train
 - Standard Auxiliary Hydraulics
 - Solid Steel Plate Chassis
 - Steel Dash
 - Ductile Steel Manifold
 - Easy Cab Mounted Grab Handles
 - Reliable Perkins Engine
 - Master Disconnect Switch
 - Boom Lift Point
 - Axle Mounted Outriggers
 - Manual Lowering Valve (Cylinders)
 - Large Cross Section Boom
 - Easy Tie Downs
 - "Y" Frame Sway Handle
 - Heavy Duty Pre-Cleaner
 - Additional High Pressure Hyd Filter
 - Direct Engine/Trans Connection
 - Individual Gauges and Switches

ATTACHMENTS & ACCESSORIES

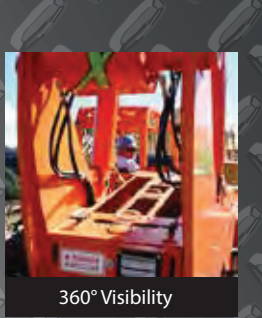
- Attachments
- Standard Fixed Carriage (48", 60", 72", 96")
 - Fork Positioning Carriage (48", 72", 96")
 - Swing Carriage
 - Tilt Carriage
 - Personnel Platform
 - Sling Mount
 - Bucket (1.0 - 2.0 cu-yd)
 - Truss (2 ft, 3 ft, 12 ft, 15 ft)
 - Telescopic Truss (Slide on)
 - Pole Grapple Carriage
 - Grapple Bucket
 - Concrete Hopper
- Accessories / Options
- Enclosed Cab w/Heat
 - Enclosed Cab w/Heat & A/C
 - Boom Work Light Package
 - Flashing Amber Strobe
 - Pintle Hook
 - Tail/Turn/Brake Lights
 - LED Lighting
 - Steel Fenders
 - 5th Wheel Attachment
 - Boom Maintenance Stand
 - Battery Blanket
 - Limited Slip Axle(s)
 - Locking Fuel Cap
 - Soft Cab
 - Additional Lift Points
 - Swivel Lifting Hook
 - Auxiliary Cab Heater
 - Dual Batteries
 - Clear Glass
 - Padded Arm Rest
 - Two Wheel Rear Steer



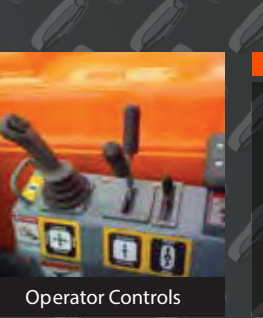
Long-Life Rollers



Boom Lift Point



360° Visibility



Operator Controls

10-5-2 WARRANTY

- 10 YEARS OR 10,000 HOURS**
FRAME & CHASSIS WELDMENT
- 5 YEARS OR 5,000 HOURS**
BOOM WELDMENT & ROLLERS
- 2 YEARS OR 2,000 HOURS**
ENGINE, ELECTRICAL, TRANSMISSION, DRIVE AXLES & HYDRAULIC COMPONENTS