



4400 Series

STINGER 4485

4485 Capacity and Range Chart:

OPERATING HEIGHT	LOAD RATINGS IN LBS. WITH OUTRIGGERS EXTENDED					AREA OF OPERATION
	27 FT	42 FT	56 FT	70 FT	85 FT	
5	44000					
8	31300	27000				
10	26350	25000				
12	22700	21425	18575			
14	19900	18675	16100	13000		
16	17600	16550	14175	12100		
20	13800	13400	11375	9700	76	9550
25	10800	10650	9000	8750	73	7375
30		8600	7325	657000	70	6875
35		6700	6900	615850	66	5650
40		3650	5775	564900	62	4700
45			4550	504650	59	3950
50			3525	453675	55	3750
55				382950	51	3025
60				302400	46	2425
65				181800	41	1950
70					35	1550
75					28	1225
80					18	775
	700	500	350	300	250	STOWED #8 DEDUCTIONS

NOTE: RATINGS ABOVE THE HEAVY LINE ARE BASED ON STRUCTURAL COMPETENCE AND NOT ON MACHINE STABILITY.

DEDUCTIONS FROM RATED LOADS FOR HANDLING DEVICES:
OVERHAUL BALL: 175 LBS.
1 SHEAVE LOAD BLOCK: 200 LBS
2 SHEAVE LOAD BLOCK: 250 LBS
AUX. SHEAVE: 50 LBS

NOTE: Please consult the Terex Cranes full-line brochure for a complete listing of standard features and optional equipment.

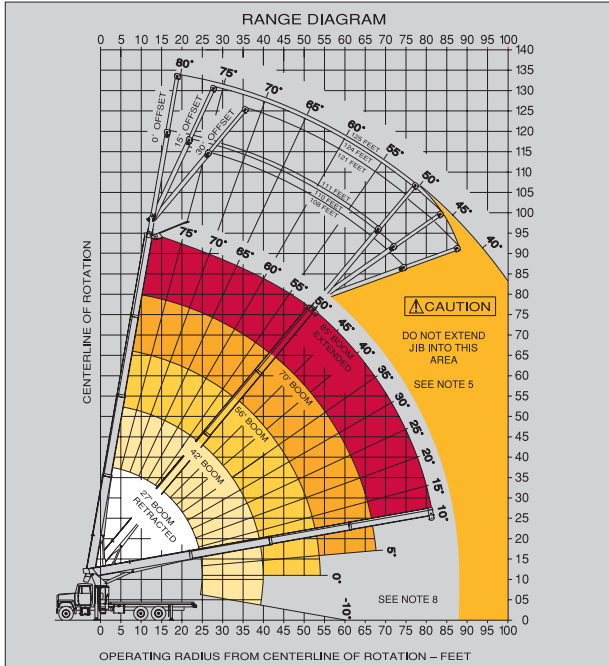
4485 Optional Mounting Configurations:

Behind Cab (TC)
Rear Mount (RM)

(Some standard features for the optional mounting configurations will vary. Please consult your Terex Cranes dealer or factory for chassis and mounting requirements.)

TC 4485 Minimum Chassis Requirements:

- Chassis specifications are minimum for truck-crane mount. Not applicable to optional mounting configurations.
- Gross Vehicle Weight Rating 52,000 lbs. (23,587 kg)
- Front Axle Weight Rating 18,000 lbs. (8,165 kg)
- Rear Axle Weight Rating 34,000 lbs. (15,422 kg)
- Wheelbase 246 in. (6,248 mm)
- Cab To Axle 168 in. (4,267 mm)
- Afterframe 100 in. (254 mm)
- Transmission Heavy-Duty 6-Bolt PTO (Neutral lock-up required for automatic transmission)
- Electrical System Heavy-Duty
- Cooling System Heavy-Duty
- Frame Section Modulus 26 in.³ (426 cm³)
- RBM Per Frame Rail 2,860,000 in./lbs. (32,955 kg-m)



NOTE: Diagrams depict recommended mounting dimensions. The dimensions of optional mounting configurations will vary. Please consult your dealer or Terex Cranes for specifics. Dimensions do not include load deflection.

Rope and Reeving:

1 PART LINE	2 PART LINE	3 PART LINE	4 PART LINE	5 PART LINE	CAUTION
LOADS UP TO 9,800 LBS. STD. CABLE	LOADS UP TO 19,200 LBS. STD. CABLE	LOADS UP TO 28,800 LBS. STD. CABLE	LOADS UP TO 38,400 LBS. STD. CABLE	LOADS UP TO 48,000 LBS. STD. CABLE	
6,700 LBS. ROT. RESIST. CABLE	13,440 LBS. ROT. RESIST. CABLE	20,160 LBS. ROT. RESIST. CABLE	26,880 LBS. ROT. RESIST. CABLE	33,600 LBS. ROT. RESIST. CABLE	

THIS MACHINE COMPLIES WITH OSHA REGULATIONS 1910.102 AND 1926.102 WHERE APPLICABLE AT DATE OF MANUFACTURE

