



3800 Series

3874 Capacity and Range Chart:

OPERATING HEIGHT - FEET	LOAD RATINGS IN LBS. WITH OUTRIGGERS EXTENDED					AREA OF OPERATION 360° FULL CAPACITY WORK AREA		
	29 FT	40 FT	51 FT	62 FT	74 FT			
5	38000							
8	27150	24800						
10	22950	20950	20275					
12	19900	18050	17400	15150				
14	17550	15850	15250	13150	12500			
16	15650	14150	13550	11650	11350			
20	12650	11550	11050	9425	9125			
24	9950	9700	9325	7825	7625			
27	6225	45	8525	57	8325			
30		38	7525	53	7425			
34		27	6125	47	6425			
38		3	3425	40	5525			
43			30	4125	45		3925	
49			3	2125	36		3125	
55					24		2325	
60				4	1125		34	2125
65							25	1625
70						15	1025	

JIB CAPACITIES FOR ALL BOOM LENGTHS							
CAPACITY ALERT SYSTEM, IF SO EQUIPPED, IS NOT FUNCTIONAL WHEN LIFTING WITH JIB							
LOADED BOOM ANGLE	50°	55°	60°	65°	70°	75°	78°
RETRACTED 26 FT JIB	625	825	1125	1625	2325	3125	4025
EXTENDED 44 FT JIB	425	625	925	1225	1625	2325	2825

STINGER 3874

NOTE: Please consult the Terex Cranes full-line brochure for a complete listing of standard features and optional equipment.

3874 Optional Mounting Configurations:

- Behind Cab (TC)
- Rear Mount (RM)
- Pedestal Mount (PM)

(Some standard features for the optional mounting configurations will vary. Please consult your Terex Cranes dealer or factory for chassis and mounting requirements.)

TC 3874 Minimum Chassis Requirements:

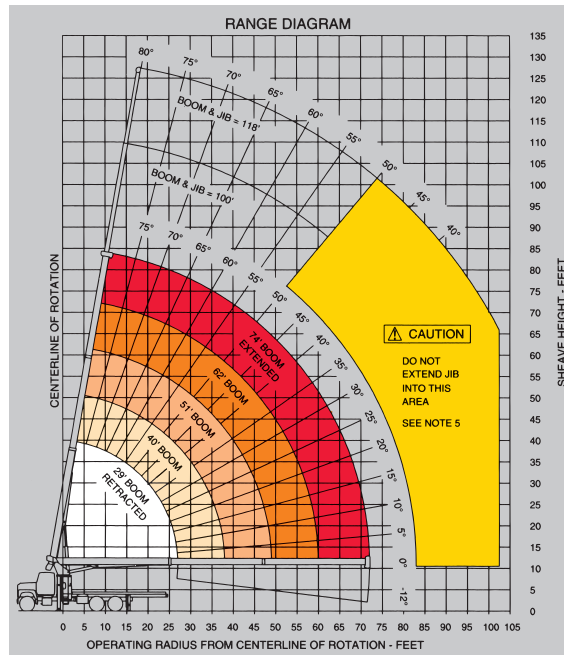
Chassis specifications are minimum for truck-crane mount. Not applicable to optional mounting configurations.

- Gross Vehicle Weight Rating50,000 lbs. (22,680 kg)
- Front Axle Weight Rating18,000 lbs. (8,165 kg)
- Rear Axle Weight Rating34,000 lbs. (15,422 kg)
- Wheelbase246 in. (6,248 mm)
- Cab to Axle168 in. (4,267 mm)
- Afterframe90 in. (2,286 mm)
- TransmissionHeavy-Duty (Neutral lock-up required for automatic transmission)
- Electrical SystemHeavy-Duty
- Cooling SystemHeavy-Duty
- Frame Section Modulus26.0 in³ (426 cm³)
- RBM Per Frame Rail2,860,000 in./lbs. (32,951 kg-m)

Rope and Reeving:

1 PART LINE	2 PART LINE	3 PART LINE	4 PART LINE	CAUTION OVERLOAD AND ANTI-TWO-BLOCK SYSTEMS MUST BE IN GOOD OPERATING CONDITION BEFORE OPERATING CRANE. REFER TO OWNER'S MANUAL, KEEP AT LEAST 3 WRAPS OF LOADLINE ON DRUM AT ALL TIMES. USE ONLY 3/16" DIAMETER CABLE WITH 33,600 LB. BREAKING STRENGTH ON THIS MACHINE.
 OVERHAUL BALL LOADS UP TO 9,600 LBS. STD. CABLE 6,720 LBS. ROT. RESIST. CABLE	 ONE SHEAVE LOAD-BLOCK LOADS UP TO 19,200 LBS. STD. CABLE 13,440 LBS. ROT. RESIST. CABLE	 ONE SHEAVE LOAD-BLOCK LOADS UP TO 28,800 LBS. STD. CABLE 20,160 LBS. ROT. RESIST. CABLE	 TWO SHEAVE LOAD-BLOCK LOADS UP TO 38,400 LBS. STD. CABLE 26,880 LBS. ROT. RESIST. CABLE	

THE MACHINE COMPLIES WITH OSHA REGULATIONS 1910.180 AND 1926.550 WHERE APPLICABLE AT DATE OF MANUFACTURE 3-654-00519



NOTE: Diagrams depict recommended mounting dimensions. The dimensions of optional pedestal and rear mounts will vary. Please consult your dealer or Terex Cranes for specifics. Dimensions do not include load deflection.

©Copyright 1997 Terex Cranes Form #TC 3874
550 Old Highway 56
Olathe, KS 66061 (913) 782-1200