

**TW-ZR300XL
SERIES**



TADANO



MAXIMUM LIFTING CAPACITY: 7,000 lbs
EXTENDED LENGTH: 35.43' (TM-ZR305XL)

Telescoping boom truck mounted crane

Known World Wide. TADANO Quality in North America

**TM-ZR300XL SERIES CRANE SPECIFICATION**

	MODEL : TM-ZR303XL	MODEL : TM-ZR304XL
MAXIMUM LIFTING CAPACITY	7,000 lbs. @ 4.6' (4-part lines).	
CRANE CAPACITY	5,600 lbs. @ 6' (4-part lines)	
BOOM <i>Fully powered synchronized telescoping boom of pentagonal box construction</i>	3-sectioned <i>Retracted length: 9.35'</i> <i>Extended length: 21.65'</i> <i>Extended speed: 12.30' / 10 s</i> <i>Elevation: Elevated by a double-acting hydraulic cylinder</i> <i>Elevation speed: 1° to 76° / 6 s</i> <i>Boom point: 2 sheaves</i>	4-sectioned <i>Retracted length: 10.41'</i> <i>Extended length: 29.19'</i> <i>Extended speed: 18.78' / 13 s</i> <i>Elevation: Elevated by a double-acting hydraulic cylinder</i> <i>Elevation speed: 1° to 76° / 6 s</i> <i>Boom point: 2 sheaves</i>
WINCH <i>Hydraulic motor driven Spur gear speed reduction, provided with mechanical brake and cable follower.</i>	Single line pull: 1,750 lbs. Single line speed: 216 FPM (@ 4rd layer) Wire rope. <i>Diameter x length: 5/16" (8mm) x 148'</i> <i>Breaking strength: 9,680 lbs.</i> <i>Construction: 7 X 7 + 6 X WS(26)</i> Hook block: 2 sheaves	Single line pull: 1,750 lbs. Single line speed: 216 FPM (@ 4rd layer) Wire rope. <i>Diameter x length: 5/16" (8mm) x 184'</i> <i>Breaking strength: 9,680 lbs.</i> <i>Construction: 7 X 7 + 6 X WS(26)</i> Hook block: 2 sheaves
SWING	<i>Hydraulic motor driven. Worm gear speed reduction, Continuous 360° full circle swing on</i> Swing speed: 2.5 rpm.	
HOOK STOWING DEVICE	<i>Mechanically stowed beneath boom top portion</i> <i>See picture to the right</i>	
OUTRIGGERS	<i>Manually extended sliders and hydraulically extended jacks, Integral up and down. Easy grab type grips lock and unlock sliders position and double</i> Extended width Min. 6' 6 3/4" Mid. 8' 9 1/2" Max. 10' 5 3/16"	
HYDRAULICS	Hydraulic motor <i>Axial piston type for winch and swing</i> Control valves <i>Multiple control valves with integral safety valve</i> Recommended hydraulic pump <i>Pressure: Max. 2,490 PSI capacity</i> <i>Delivery: Max. 14 GPM capacity</i>	
ELECTRICAL SYSTEM	Power supply: DC12V	
SAFETY DEVICES	Anti-two-block with alarm Hook safety latch Level gauge Hydraulic safety valves, check valves and holding valves Over load alert with load indicator <i>Load indication</i> <i>Load moment ratio to rated load indication</i> <i>Audible warning</i> <i>External warning lamps</i>	
CRANE WEIGHT	Approx. 1,910 lbs. (crane bare)	Approx. 2,120 lbs. (crane bare)

NOTE: Max. operating speeds of the crane are performed under the condition that the pump delivery is 14 GPM.

MODEL : TM-ZR305XL

7,000 lbs. @ 4.4' (4-part lines).

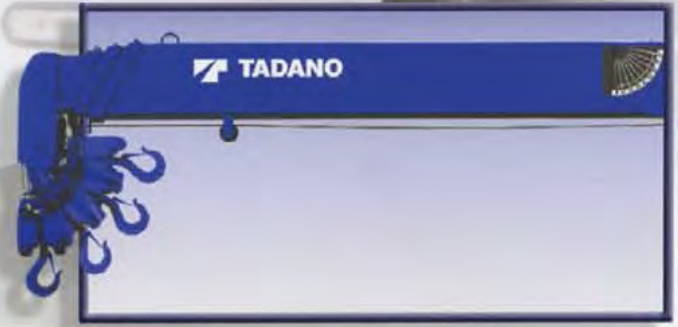
5,600 lbs. @ 5' (4-part lines)

5-sectioned
Retracted length: 10.26'
Extended length: 35.43'
Extended speed: 25.17' / 15.5 s
Elevation: Elevated by a double-acting hydraulic cylinder
Elevation speed: 1° to 76° / 6 s
Boom point: 2 sheaves

Single line pull: 1,750 lbs.
 Single line speed: 216 FPM (@ 4rd layer)
 Wire rope.
Diameter x length: 5/16" (8mm) x 217'
Breaking strength: 9,680 lbs.
Construction: 7 X 7 + 6 X WS(26).
 Hook block: 2 sheaves

ball bearing slew ring, Automatic swing lock

with crane frame. Power lock pins for storage position.

**Hook Stowing Device****Radio Remote Control**
(Full proportional handheld type)

Approx. 2,330 lbs. (crane bare)

RATED LIFTING CAPACITIES (IN POUNDS)
MODEL : TM-ZR303XL CAPACITY CHART ; D

Load Radius (ft)	9.4 ft Boom			15.5 ft Boom			21.7 ft Boom	
	Boom ∠	Outriggers Extended		Boom ∠	Outriggers Extended		Boom ∠	Outriggers Extended Max.
		Max.	Min.		Max.	Min.		
4.6	60°	7000	5300	74°	7000	5300		
5	57°	6600	4800	72°	6600	4800		
6	49°	5600	4000	68°	5600	4000	75°	4100
8	27°	4100	2600	59°	4100	2600	70°	3700
10				50°	3200	1800	64°	2900
12				38°	2600	1400	57°	2300
14				22°	2200	1100	50°	2000
16							43°	1750
20							21°	1350
	1°	3800	2300	1°	2100	1000	1°	1250
		(8.7ft.)			(14.8ft.)			(21.0ft.)

MODEL : TM-ZR303XL CAPACITY CHART ; A

Load Radius (ft)	9.4 ft Boom			15.5 ft Boom			21.7 ft Boom	
	Boom ∠	Outriggers Extended		Boom ∠	Outriggers Extended		Boom ∠	Outriggers Extended Max.
		Max.	Min.		Max.	Min.		
4.6	60°	7000	5300	74°	7000	5300		
5	57°	6600	4800	72°	6600	4800		
6	49°	5600	4000	68°	5600	4000	75°	4100
8	27°	4100	2600	59°	4100	2600	70°	3700
10				50°	3200	1800	64°	2900
12				38°	2500	1400	57°	2300
14				22°	2050	1100	50°	1950
16							43°	1600
20							21°	1200
	1°	3800	2300	1°	1900	1000	1°	1150
		(8.7ft.)			(14.8ft.)			(21.0ft.)

NOTE:

- Rated lifting capacities on this chart show maximum allowable loads with the outriggers properly extended on a firm surface and the crane leveled and mounted on a factory recommended truck. The rated lifting capacities in shade area are based on crane strength and others, on its stability(not to exceed 85% of tipping).
- The weight of handling devices such as hook block (65lbs.), slings, etc., must be considered part of the load and must be deducted from the rated lifting capacities.
- The operator must reduce loads to allow for such factors as wind, ground conditions, operating speed and the effects of freely suspended loads such as boom deflection.
- For boom lengths not shown, use the rated lifting capacity of next longer boom.
- When outriggers are extended to mid.position, use the rated lifting capacities for outriggers extended to min. position.
- For boom lengths longer than 16.7 ft., extend outriggers to max.
- 29.2 ft. boom means mark on 4th boom section side plate is half visible.



MODEL : TM-ZR304XL CAPACITY CHART ; D

Load Radius (ft)	10.4 ft Boom			16.8 ft Boom			23.0 ft Boom		29.2 ft Boom	
	Boom ∠	Outriggers Extended		Boom ∠	Outriggers Extended		Boom ∠	Outriggers Extended Max.	Boom ∠	Outriggers Extended Max.
		Max.	Min.		Max.	Min.				
4.6	63°	7000	5300	75°	7000	5300				
5	61°	6600	4800	73°	6600	4800				
6	54°	5600	4000	70°	5600	4000	76°	4100		
8	37°	4100	2600	62°	4100	2600	71°	3700	75°	2100
10				54°	3200	1750	65°	2900	71°	2100
12				44°	2600	1300	59°	2300	67°	1850
14				32°	2200	1000	53°	2000	63°	1600
16							46°	1750	58°	1400
20							29°	1350	48°	1100
25									31°	850
	1°	3300	1850	1°	1850	800	1°	1150	1°	700
		(9.8ft.)			(16.1ft.)			(22.3ft.)		(28.5ft.)

MODEL : TM-ZR304XL CAPACITY CHART ; A

Load Radius (ft)	10.4 ft Boom			16.8 ft Boom			23.0 ft Boom		29.2 ft Boom	
	Boom ∠	Outriggers Extended		Boom ∠	Outriggers Extended		Boom ∠	Outriggers Extended Max.	Boom ∠	Outriggers Extended Max.
		Max.	Min.		Max.	Min.				
4.6	63°	7000	5300	75°	7000	5300				
5	61°	6600	4800	73°	6600	4800				
6	54°	5600	4000	60°	5600	4000	76°	4100		
8	37°	4100	2600	62°	4100	2600	71°	3700	75°	2100
10				54°	3100	1750	65°	2900	71°	2100
12				44°	2400	1300	59°	2300	67°	1850
14				32°	2000	1100	53°	1900	53°	1600
16							46°	1550	58°	1400
20							29°	1100	48°	1050
25									31°	800
	1°	3200	1850	1°	1650	800	1°	950	1°	650
		(9.8ft.)			(16.1ft.)			(22.3ft.)		(28.5ft.)





RATED LIFTING CAPACITIES (IN POUNDS)

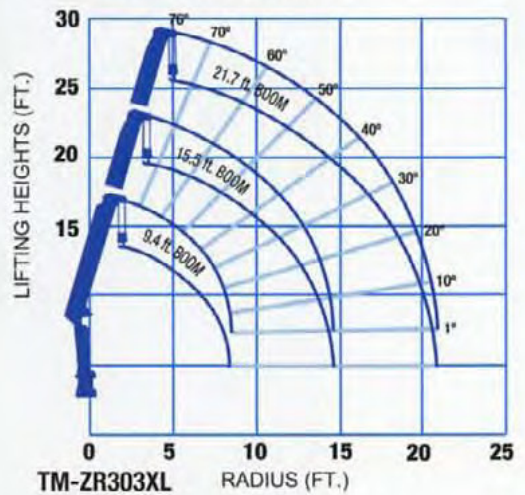
MODEL : TM-ZR305XL CAPACITY CHART ; D

Load Radius (ft)	10.3 ft Boom			16.7 ft Boom			23.0 ft Boom		29.2 ft Boom		35.4 ft Boom	
	Boom ∠	Outriggers Extended		Boom ∠	Outriggers Extended		Boom ∠	Outriggers Extended Max.	Boom ∠	Outriggers Extended Max.	Boom ∠	Outriggers Extended Max.
		Max.	Min.		Max.	Min.						
4.4	64°	7000	5300	75°	7000	5300						
5	60°	6300	4700	73°	6300	4700						
6	53°	5200	3900	69°	5200	3900	76°	3800				
8	36°	3900	2500	61°	3900	2500	70°	3400	75°	2000		
10				53°	3100	1650	65°	2700	71°	2000	75°	1050
12				43°	2500	1200	59°	2200	67°	1750	71°	1050
14				31°	2100	900	53°	1900	62°	1500	68°	950
16							46°	1650	58°	1300	64°	850
20							28°	1300	47°	1000	57°	650
25									31°	800	46°	500
30											32°	400
	1°	3200	1800	1°	1800	700	1°	1150	1°	700	1°	350
		(9.6ft.)			(16.0ft.)			(22.3ft.)		(28.5ft.)		(34.8ft.)

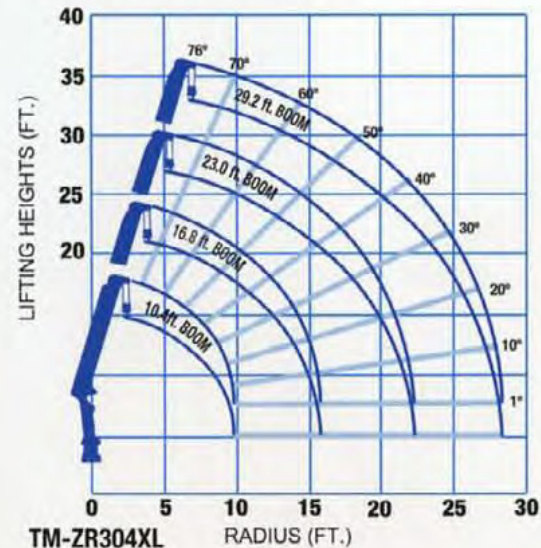
MODEL : TM-ZR305XL CAPACITY CHART ; A

Load Radius (ft)	10.3 ft Boom			16.7 ft Boom			23.0 ft Boom		29.2 ft Boom		35.4 ft Boom	
	Boom ∠	Outriggers Extended		Boom ∠	Outriggers Extended		Boom ∠	Outriggers Extended Max.	Boom ∠	Outriggers Extended Max.	Boom ∠	Outriggers Extended Max.
		Max.	Min.		Max.	Min.						
4.4	64°	7000	5300	75°	7000	5300						
5	60°	6300	4700	73°	6300	4700						
6	53°	5200	3900	69°	5200	3900	76°	3800				
8	36°	3900	2500	61°	3900	2500	70°	3400	75°	2000		
10				53°	3000	1650	65°	2700	71°	2000	75°	1050
12				43°	2300	1200	59°	2200	67°	1750	71°	1050
14				31°	1900	900	53°	1800	62°	1500	68°	950
16							46°	1450	58°	1300	64°	850
20							28°	1000	47°	950	57°	650
25									31°	750	46°	500
30											32°	400
	1°	3200	1800	1°	1600	700	1°	850	1°	600	1°	300
		(9.6ft.)			(16.0ft.)			(22.3ft.)		(28.5ft.)		(34.8ft.)

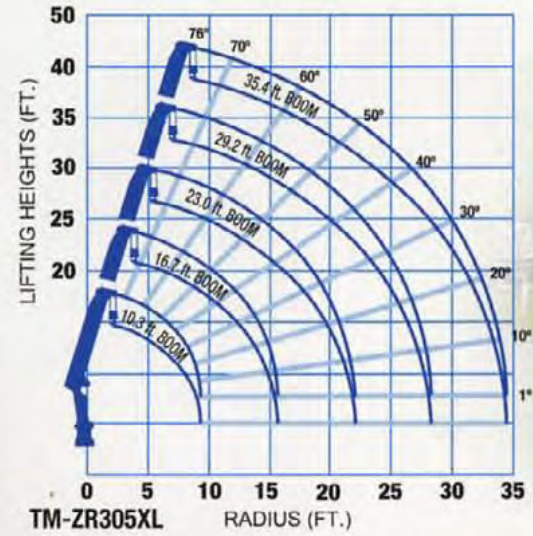
WORKING RANGE CHARTS



TM-ZR303XL RADIUS (FT.)



TM-ZR304XL RADIUS (FT.)



TM-ZR305XL RADIUS (FT.)

NOTE: The above lifting heights and boom angles are based on a straight (unladen) boom, and allowance should be made for boom deflection obtained under laden condition.

GENERAL DATA FOR SUITABLE TRUCKS

CAPACITY; A

- Gross Axle Weight Rating (GAWR), front... 5,000 lbs. or more.
- Gross Axle Weight Rating (GAWR), rear.... 10,000 lbs. or more
- Gross Vehicle Weight Rating..... 15,000 to 26,100 lb.
- Wheelbase (WB)..... 145 to 215"

CAPACITY; D

- Gross Axle Weight Rating (GAWR), front.... 5,500 lbs. or more
- Gross Axle Weight Rating (GAWR), rear 10,000 lbs. or more

- Frame Section Modulus(SM) under crane; (per rail)..... 10 cu. inch 110,000 PSI
- Frame Section Modulus (SM) over rear spring hanger; (per rail)..... 10 cu. inch 110,000 PSI
- PTO torque..... 94 ft-lbs. Min.
- PTO revolution..... Approx. 300 to 3000 rpm
- Width for crane mounting..... Approx. 2' 13/32" min.
- Frame width range (inside to outside)..... Approx. 2' to 2' 10"
- Frame height (ground to frame top)..... Approx. 3'4" Max. (Height of crane mounting base can be changed by combination of jack floats and crane bases)





333 Northpark Central Drive, Suite Z
Houston, TX 77073-6088
Tel; (281) 869-0030 Fax: (281)869-0040
www.tadanoamerica.com