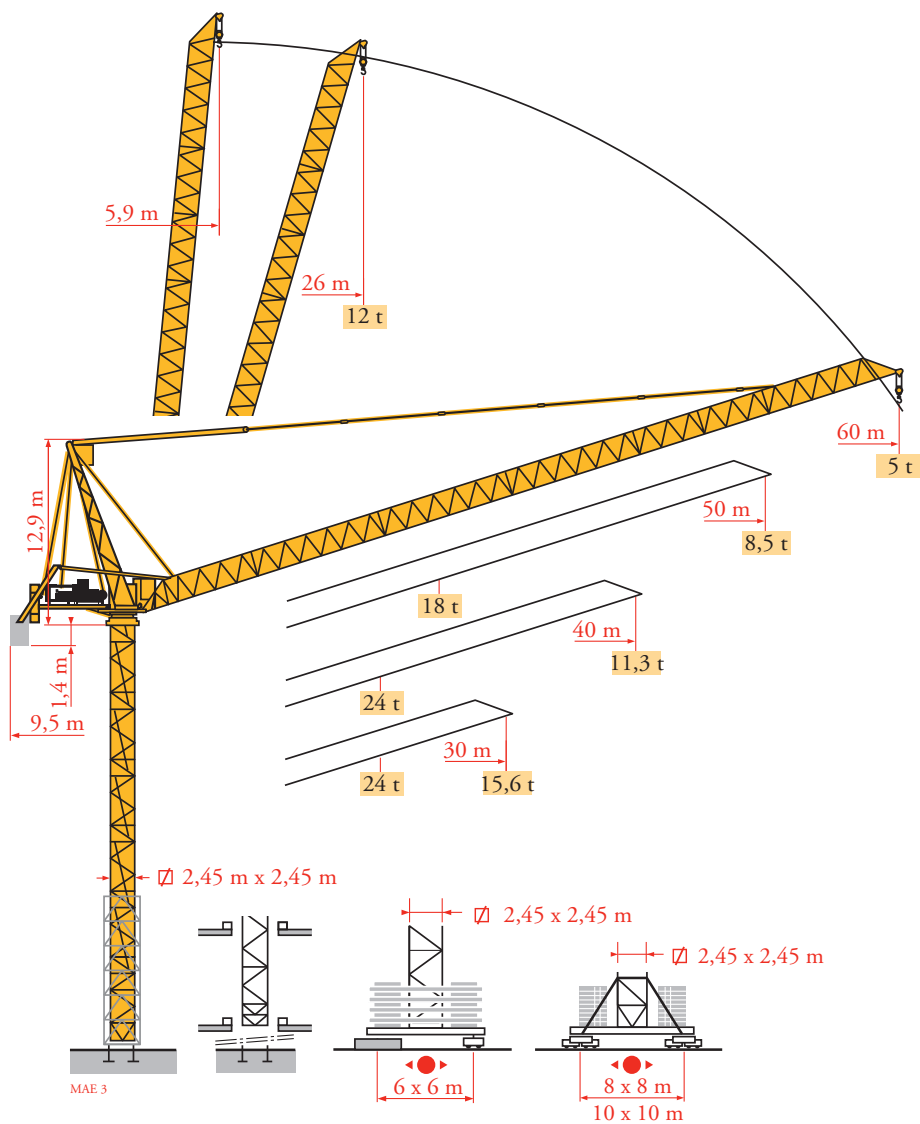


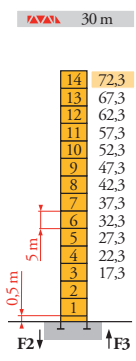
Potain MR 415 H24



Mat / Réactions
 Maste / Eckdrücke
 Masts / Reactions
 Mástil / Reacciones
 Torre / Reazioni
 Tramo / Reações
 Композиции башни /
 Реакции

MAE 6

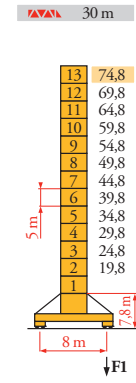
2,45 m
 30 m ⇒ 60 m



MAE 6	H (m)	5 m	3,33 m
30 m	72,3	14	-
40 m	69	12	2
50 m	64	11	2
60 m	59	10	2

P 800 A

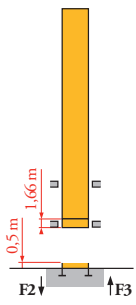
F2	● 227 t
	■ 360 t
F3	● 153 t
	■ 292 t
	▲ 104 t



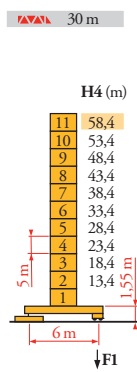
MAE 6	H (m)	5 m	3,33 m
30 m	74,8	13	-
40 m	69,8	12	-
50 m	66,4	10	2
60 m	61,4	9	2

Y 800 A

F1	● 160 t
	■ 202 t
	▲ 138 t



B 800 B

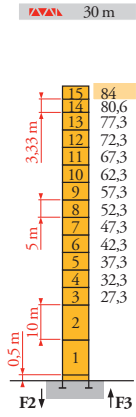
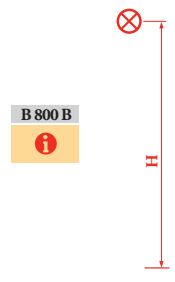


MAE 6	H4 (m)	H3 (m)	5 m	3,33 m
30 m	58,4	-	11	-
40 m	53,4	53,7	10	-
50 m	51,7	-	9	1
60 m	48,4	48,7	9	-
	-	45,3	7	2

ZX 6830

F1	● 147 t
	■ 177 t
	▲ 106 t

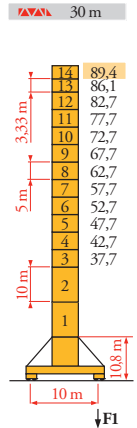
ZX 6830



MAE 6	H (m)	10 m	5 m	3,33 m
30 m	84	2	11	2
40 m	80,6	2	11	1
50 m	75,6	2	10	1
60 m	70,6	2	9	1

P 850 A

F2	● 274 t
	■ 505 t
F3	● 184 t
	■ 423 t
	▲ 120 t



MAE 6	H (m)	10 m	5 m	3,33 m
30 m	89,4	2	10	2
40 m	86,1	2	10	1
50 m	82,7	2	10	-
60 m	79,4	2	8	2

J 850 A

F1	● 172 t
	■ 252 t
	▲ 173 t

- | | | | | | | |
|---|--|---|--|---|---|--|
| FR | DE | EN | ES | IT | PT | RU |
| ● Réactions en service | ● Reaktionskräfte in Betrieb | ● Reactions in service | ● Reacciones en servicio | ● Reazioni in servizio | ● Reações em serviço | ● Реакции при работе |
| ■ Réactions hors service | ■ Reaktionskräfte außer Betrieb | ■ Reactions out of service | ■ Reacciones fuera de servicio | ■ Reazioni fuori servizio | ■ Reações fora de serviço | ■ Реакции в покое |
| ▲ A vide sans lest (ni train de transport) avec flèche et hauteur maximum | ▲ Ohne Last, Ballast (und Transportachse), mit Maximalausleger und Maximalhöhe | ▲ Without load, ballast (or transport axles), with maximum jib and maximum height | ▲ Sin carga, sin lastre, (ni tren de transporte), flecha y altura máxima | ▲ A vuoto, senza zavorra (ne assali di trasporto) con braccio massimo e altezza massima | ▲ Sem carga (nem trem de transporte)- sem lastro com lança e altura máximas | ▲ Вес без груза, балласта (или транспортных осей), с максимальной длиной стрелы и максимальной высотой |
| ⓘ Nous consulter | ⓘ Auf Anfrage | ⓘ Consult us | ⓘ Consultarnos | ⓘ Consultateci | ⓘ Consultar-nos | ⓘ Проконсультируйтесь у нас |

MR 415 H24

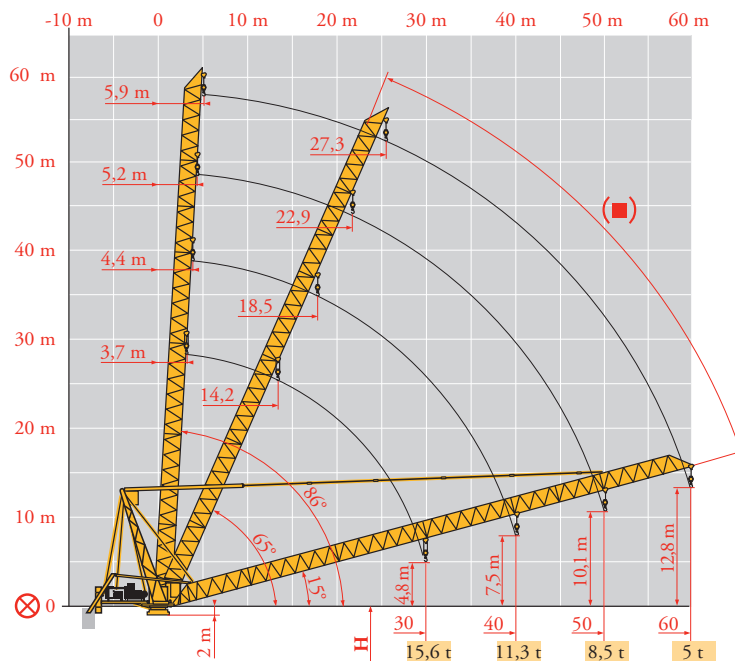
Courbes de charges
Lastkurven
Load diagrams
Curvas de cargas
Curve di carico
Curva de cargas
Диаграммы грузоподъемностей

MAE3

60 m	5,9	▶							26	28	30	35	40	45	50	55	60 m							
▼▼▼	↓								12	11,4	10,6	9	7,8	6,9	6,1	5,5	5	t						
50 m	5,2	▶							23,6	24	25	26	28	30	35	36,1	40	45	50 m					
▼▼▼	↓								18	17,7	17	16,3	15	13,9	11,8	-	10,2	8,9	7,9	t				
																12	10,8	9,5	8,5	t				
40 m	4,4	▶							18,8	20	22	24	25	26	28	30	35	37,8	40 m					
▼▼▼	↓								24	22,6	20,4	18,6	17,8	17,1	15,8	14,7	12,4	-	10,7	t				
																				12	11,3	t		
30 m	3,7	▶							20	22	24	25	26	28	30 m									
▼▼▼	↓								24	21,7	19,8	19	18,2	16,8	15,6	t								
																							12	t

Flèche relevée
Ausleger in Steilstellung
Luffing jib
Flecha izada
Braccio impennato
Lança inclinada
Маховая стрела

MAE3



⊗	FR Axe articulation flèche	DE Ausleger-gelenkachse	EN Jib hinge shaft	ES Eje articulación de flecha	IT Asse cerniera braccio	PT Eixo de articulação da lança	RU Ось шарнира стрелы
■	Position girouette	Windfreistellung	Weathering position	Posición eleta	Libera rotazione	Posição em cavatento	Флюгирование

Mécanismes
Antriebe
Mechanisms
Mecanismos
Meccanismi
Mecanismos
Механизмы

MAE 7

MR 415 H24 - 50 Hz			↓				↓				ch - PS	kW		
	180 LBR 120 L 580	m/min	5,3/53	8,4/84	13,5/135	21,4/214	2,6/26	4,2/42	6,7/67	10,7/107	180	132	580 m	
		t	12	7,3	4,3	2,35	24	15	8,9	5				
	124 VBR	tr/min U/min - rpm	1 min 31 s									125	90	
	R - 8,8	m/min	0 → 0,67									2 x 6	2 x 4,4	
	Y 800 A	RT584 A1 - 2V	13,5 - 27									8 x 7	8 x 5,2	
	J 850 A													
	ZX 6830	RT 664 A2B - 2V	16 - 32									6 x 7	6 x 5,2	

	IEC 60204-32	400 V(+10% -10%) 50 Hz / 480 V(+ 6% -10%) 60 Hz		350 kVA
--	--------------	---	--	---------

MR 415 H24 - 60 Hz			↓				↓				ch - PS	kW		
	215 LBR 120 L 580	m/min	6,3/63	10/100	16/162	26/256	3,1/31	5/50	8/81	13/128	215	158	580 m	
		t	12	7,3	4,3	2,35	24	15	8,9	5				
	150 VBR	tr/min U/min - rpm	1 min 16 s									148	108	
	R - 10,5	m/min	0 → 0,8									2 x 7,2	2 x 5,3	
	Y 800 A	RT584 A1 - 2V	16 - 32									8 x 8,4	8 x 6,2	
	J 850 A													
	ZX 6830	RT 664 A2B - 2V	19 - 38									6 x 8,4	6 x 6,2	

	IEC 60204-32	400 V(+10% -10%) 50 Hz / 480 V(+ 6% -10%) 60 Hz		350 kVA
--	--------------	---	--	---------

	FR	DE	EN	ES	IT	PT	RU
	Levage	Heben	Hoisting	Elevación	Sollevamento	Elevação	Подъем
	Distribution	Katzfahren	Trolleying	Distribución	Distribuzione	Distribuição	Перемещение каретки
	Schwenken	Schwenken	Slewing	Orientación	Rotazione	Rotação	Поворот
	Translation	Kranfahren	Travelling	Traslación	Traslazione	Translação	Перемещение крана



Document commercial non contractuel. Pour toute information technique se référer à la notice correspondante.

Unverbindliches Vertriebsdokument. Für technische Informationen, siehe die entsprechenden Anweisungen.

This commercial document is not legally binding. For any technical information, please refer to the corresponding instructions.

Documento commercial no contractual. Para cualquier información técnica, ver la noticia correspondiente.

Documento commerciale non vincolante, per tutte le informazioni tecniche fare riferimento al catalogo istruzioni.

Documento comercial não contratual. Para qualquer informação técnica complementar consultar as respectivas instruções.

Этот коммерческий документ не является юридически обязательным. Для получения технической информации, см. соответствующие инструкции.

Bigge Crane and Rigging Co.

10700 Bigge Avenue
San Leandro, CA 94577
Phone: (888) 337-BIGGE or (510) 638-8100
Fax: (510) 639-4053
Email: info@bigge.com
Web site: www.bigge.com



Manitowoc - Americas - World Headquarters
2400 S. 44th Street • Manitowoc • WI 54220 USA
Tel: +1 920 684 4410 • Fax: +1 920 652 9778

Manitowoc - Europe, Middle East & Africa
Ecully, France
18, rue de Charbonnières B.P. 173 • 69132 ECULLY Cedex • FRANCE
Tel: +33 (0)4 72 18 20 20 • Fax: +33 (0)4 72 18 20 00

Manitowoc - Asia Pacific
16F Xu Hui Yuan Building,
1089 Zhongshan No.2 Road (S) • Shanghai 200030 China
Tel: +86 21 6457 0066 • Fax: +86 21 6457 4955

MR 415 H24

REF. 2003 49 MAE 8