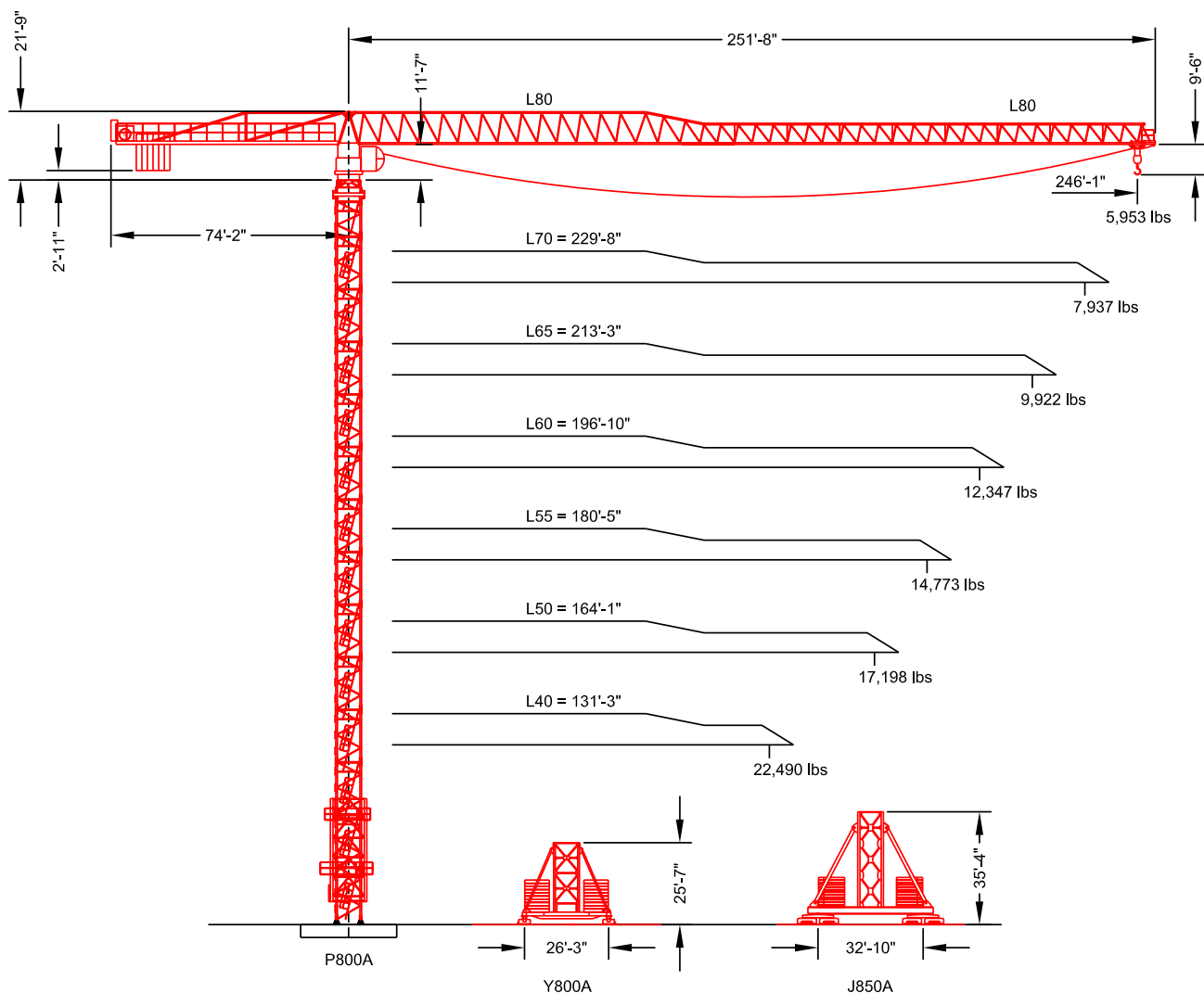
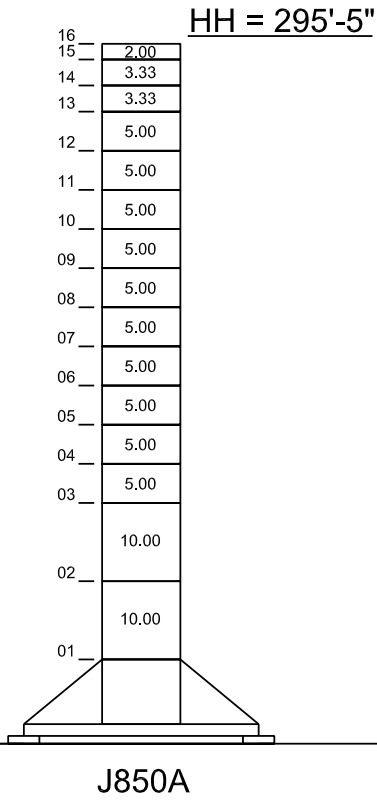
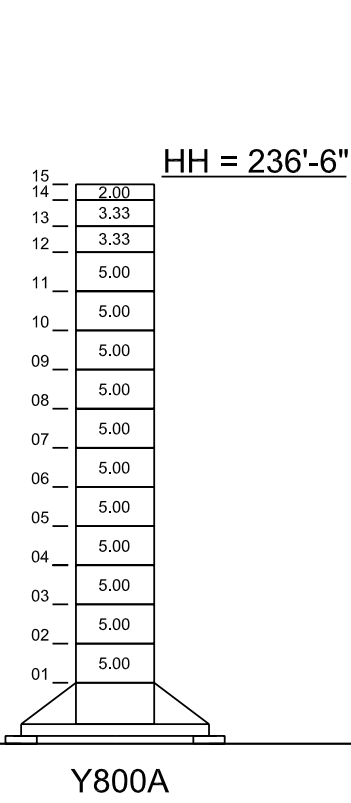
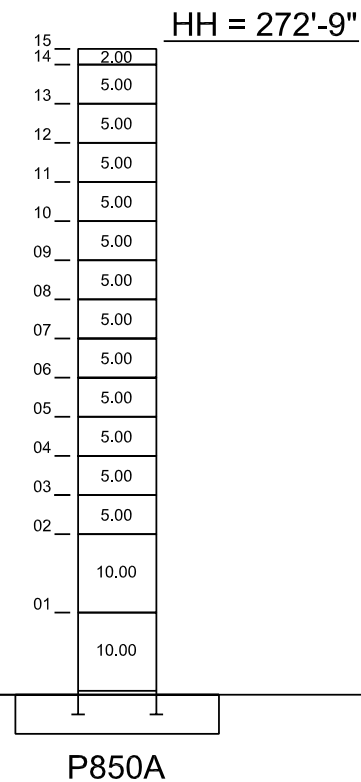
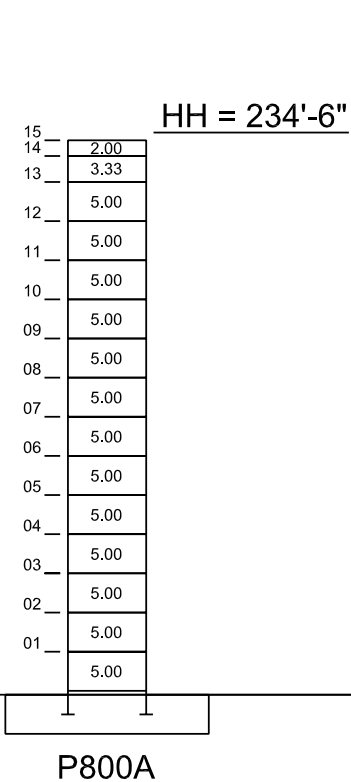


MDT 412-L20

Maximum Capacity = 44,092 lbs



F.E.M. 1.001

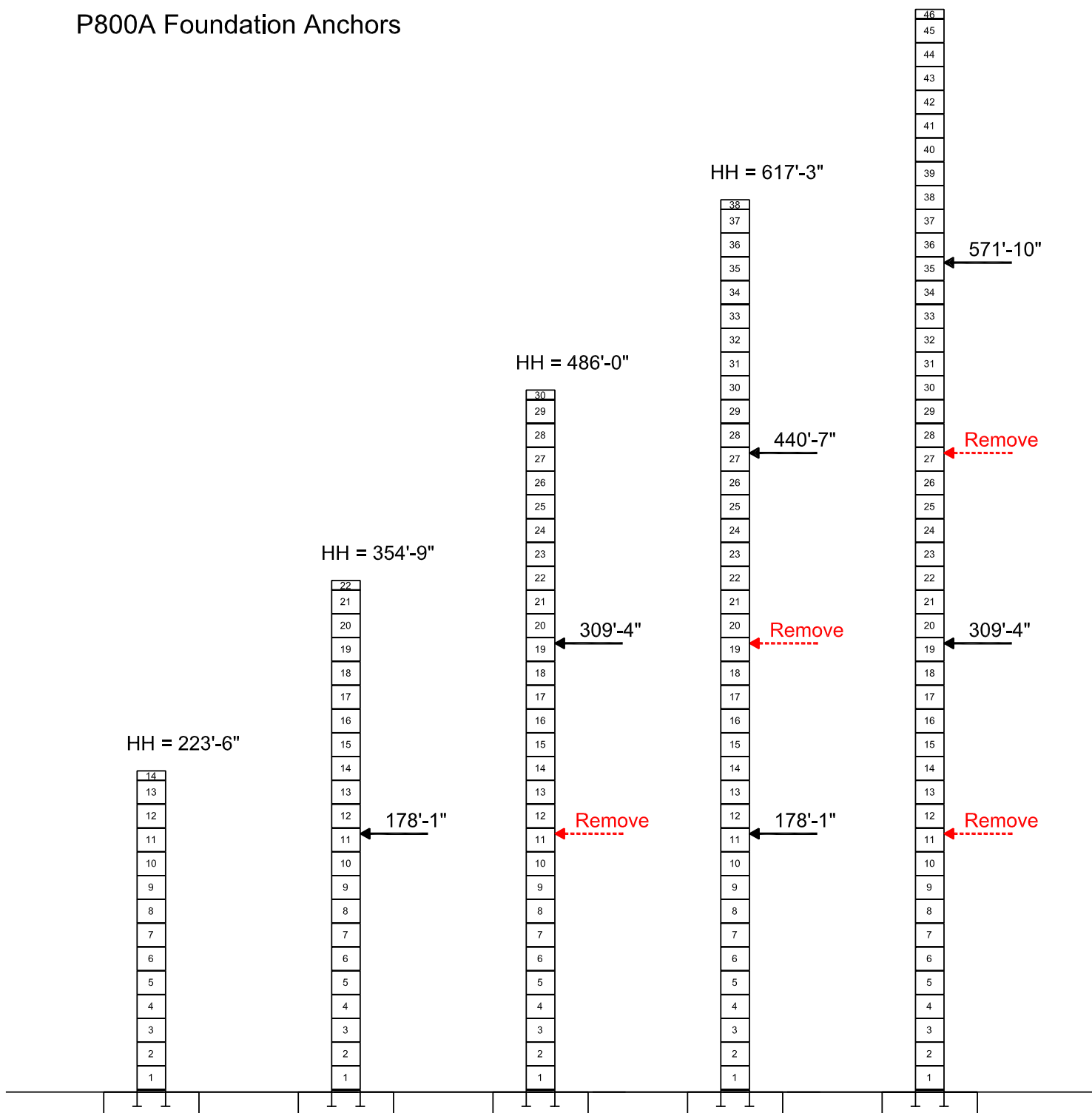


MDT 412-L20

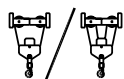
Jib Configurations: L40 thru L75 (131'-3" thru 246'-1")

P800A Foundation Anchors

HH = 748'-6"



MDT 412-L20


SM-DM Trolley
Capacity (lbs)

Hook Radius	Jib Lengths						
	246'-1"	229'-8"	213'-3"	196'-10"	180'-5"	164'-1"	131'-3"
20'-0"	44,090	44,090	44,090	44,090	44,090	44,090	44,090
30'-0"	44,090	44,090	44,090	44,090	44,090	44,090	44,090
40'-0"	44,090	44,090	44,090	44,090	44,090	44,090	44,090
50'-0"	44,090	44,090	44,090	44,090	44,090	44,090	44,090
60'-0"	36,120	41,430	44,090	44,090	44,090	44,090	44,090
70'-0"	30,190	34,700	38,220	42,050	44,090	44,090	44,090
80'-0"	25,820	29,740	32,800	36,120	38,400	39,640	39,730
90'-0"	22,460	25,920	28,630	31,570	33,580	34,680	34,750
100'-0"	19,800	22,900	25,330	27,960	29,770	30,750	30,810
110'-0"	17,640	20,450	22,640	25,030	26,670	27,560	27,620
120'-0"	15,850	18,420	20,420	22,600	24,100	24,910	24,970
130'-0"	14,340	16,710	18,560	20,560	21,940	22,690	22,740
131'-3"	14,172	16,514	18,345	20,334	21,698	22,439	22,490
140'-0"	13,060	15,250	16,960	18,820	20,100	20,790	
150'-0"	11,950	13,990	15,580	17,320	18,510	19,150	
160'-0"	10,980	12,890	14,380	16,010	17,120	17,720	
164'-1"	10,622	12,485	13,941	15,523	16,609	17,198	
170'-0"	10,130	11,920	13,330	14,850	15,900		
180'-0"	9,370	11,070	12,390	13,830	14,820		
180'-5"	9,342	11,031	12,353	13,788	14,773		
190'-0"	8,700	10,300	11,560	12,920			
196'-10"	8,279	9,825	11,034	12,347			
200'-0"	8,090	9,620	10,810				
210'-0"	7,550	9,000	10,130				
213'-3"	7,382	8,807	9,922				
220'-0"	7,050	8,430					
229'-8"	6,616	7,937					
230'-0"	6,600						
240'-0"	6,190						
246'-1"	5,953						

Max. Load Radius							
From	9'-10"	9'-10"	9'-10"	9'-10"	9'-10"	9'-10"	9'-10"
To	50'-6"	56'-10"	61'-9"	67'-1"	70'-10"	72'-10"	72'-11"

Notes:

1. The above load chart was calculated using the SM-DM trolley system.
2. Values above the red line can be achieved with 4-part line configuration only.

MDT 412-L20



Function	Hoist Type	Speed vs Weight	2-part				4-part				Motor (hp)	Motor (kW)	Rope Length (ft)
			1st Gear	2nd Gear	3rd Gear	4th Gear	1st Gear	2nd Gear	3rd Gear	4th Gear			
Hoist	66 S5.0 L310	ft/min lbs	125 22,046	197 14,330	315 8,598	500 4,850	63 44,092	98 28,660	157 17,196	250 9,700	106	79	1,017
	66 S5.0 L685	ft/min lbs	106 22,046	164 14,330	262 8,598	417 4,850	53 44,092	82 28,660	130 17,196	209 9,700	106	79	2,247
	102 S5.0 L310	ft/min lbs	150 22,046	236 18,298	378 10,803	591 6,393	79 44,092	118 36,597	189 21,605	295 13,007	164	122	1,017
Trolley	DV - 7.5	ft/min	280								12	9.0	
Swing	OR - 16.5	rpm	1.00								3 x 8.9	3 x 6.6	

Power Requirements: 480 V (+6% or -10%) 60 Hz measured at tum table.

Amperage: 66 S5.0: 230 Amp (3 phase service with ground)

Amperage: 102 S5.0: 274 Amp (3 phase service with ground)

Note: Values given under "Rope Length" are for drum spooling capacity only. Use the following equation to calculate the required rope length.

RRL = DRL + (N x RLH) + 30-ft

Dead Rope Lengths

L75	368-ft
L70	352-ft
L65	335-ft
L60	319-ft
L55	302-ft
L50	286-ft
L40	253-ft

RRL = Required Rope Length

DRL = Dead Rope Length

N = 2 for two-part reeving

N = 4 for four-part reeving

*RLH = Required Lifting Height.

Note: A hook height is the distance from the bottom of hook to the top of crane foundation. RLH will equal the hook height unless special lifts are made below the top of crane footing such as the crane making a pick down in a hole. The RLH in this case would be the hook height plus the depth of the hole.

Example:

A MDT 412 with a hook height of 280-ft, full length jib, hook block in 4-part configuration, and a 40-ft drop from the crane foundation to the lowest point in the lay down yard.

RRL = 368 + (4 x (280 + 40)) + 30 = 1,678-ft

Constant improvement and engineering progress make it necessary that we reserve the right to make specification, equipment, and price changes without notice. Illustrations shown may include optional equipment and accessories, and may not include all standard equipment. Product brochures are for illustration purposes only. Contact the manufacturer or consult the operation manual for specific details concerning this product.

Bigge Crane and Rigging Co.

10700 Bigge Avenue
San Leandro, CA 94577
Phone: (888) 337-BIGGE or (510) 638-8100
Fax: (510) 639-4053
Email: towers@bigge.com
Web site: www.biggetowercrane.com

MDT 412-L20