

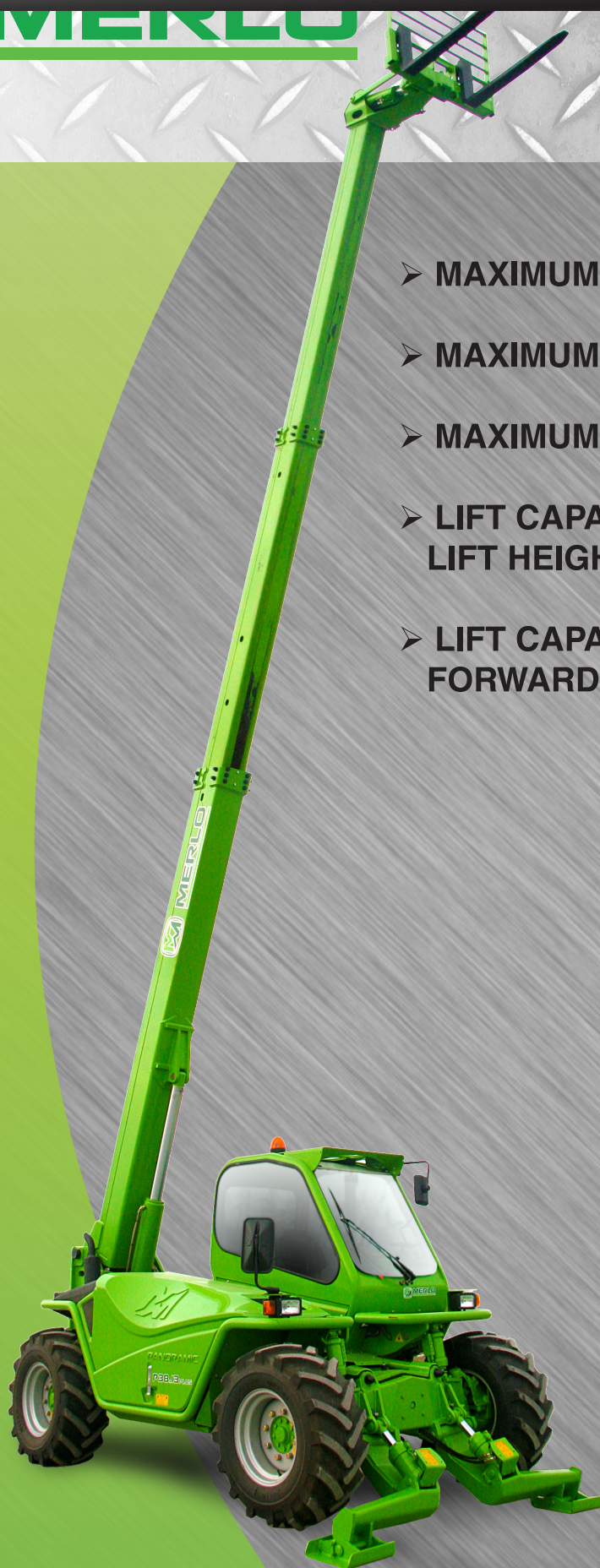


MERLO

For reference only.
Operators manual should be consulted and adhered to.

P 38.13 STABILIZERS

- MAXIMUM LOAD CAPACITY: 8,300 LBS
- MAXIMUM LIFT HEIGHT: 41' 3"
- MAXIMUM REACH: 28' 2"
- LIFT CAPACITY AT MAXIMUM LIFT HEIGHT: 7,700 LBS
- LIFT CAPACITY AT MAXIMUM FORWARD REACH: 1,600 LBS

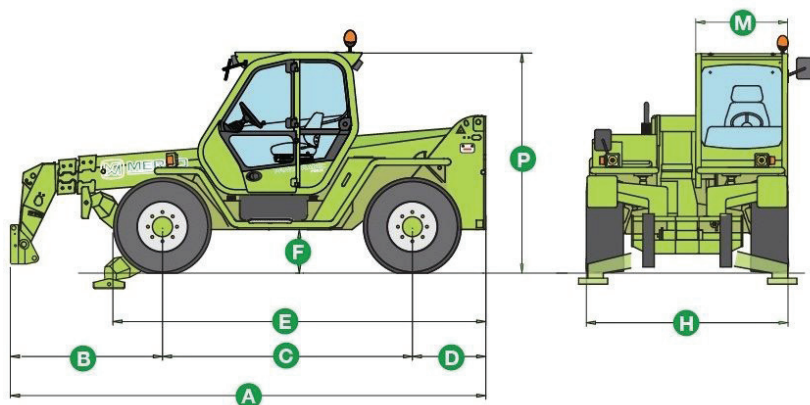
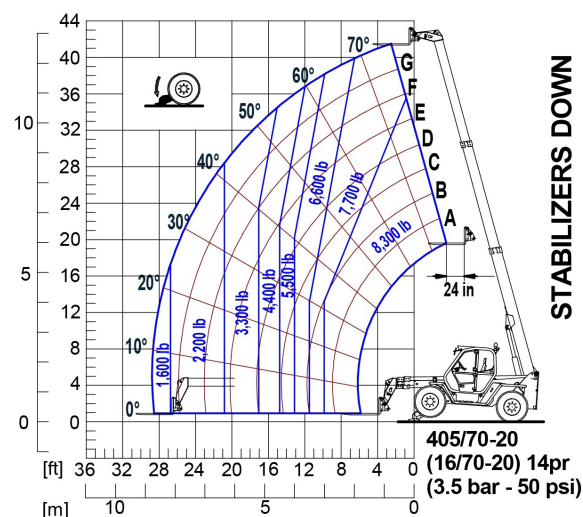
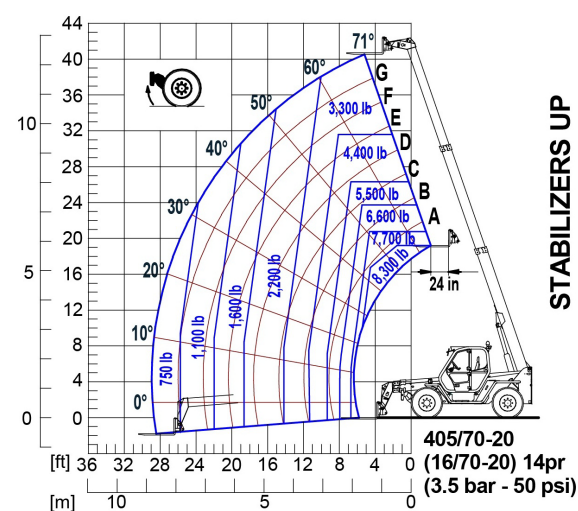


SPECIFICATIONS: P 38.13



For reference only.
Operators manual should be consulted and adhered to.

Power / 4 Cylinder Turbo Diesel	Perkins / 101 HP
Transmission	2 Speed /Hydrostatic
Maximum Speed	15 MPH
Total Unladen Mass (with forks)	19,000 LBS
Boom Side Shift (Inches)	Standard / 13
Frame Leveling	Standard / $\pm 10\%$
Load Sensing Hydraulic Pump (PSI - gal/min) ..	3,050-29
Fuel Capacity	40 Gallons
Hydraulic Oil Capacity	28 Gallons
Tires	17.5-25
Turning Radius	12'-8"
4 Wheel Drive / 3 Steering Modes	Standard
Hydraulic System	Load-Sensing
Independent Front Stabilizers	Standard



Dimensions (FT)

A	17'-2"	D	2'-7"	H	7'-3"
B	5'-0"	E	13'-5"	M	3'-2"
C	9'-0"	F	1'-6"	P	8'-0"

DEALER INFORMATION: