

**MERLO**

▲ For reference only.
▲ Operators manual should be consulted and adhered to.

P 65.14 HM

- **MAXIMUM LOAD CAPACITY: 14,300 LBS**
- **MAXIMUM LIFT HEIGHT: 45' 6"**
- **MAXIMUM REACH: 28' 9"**
- **LOAD CAPACITY AT MAXIMUM LIFT HEIGHT: 8,800 LBS**
- **LOAD CAPACITY AT MAXIMUM FORWARD REACH: 3,500 LBS**





SPECIFICATIONS: P 65.14 HM

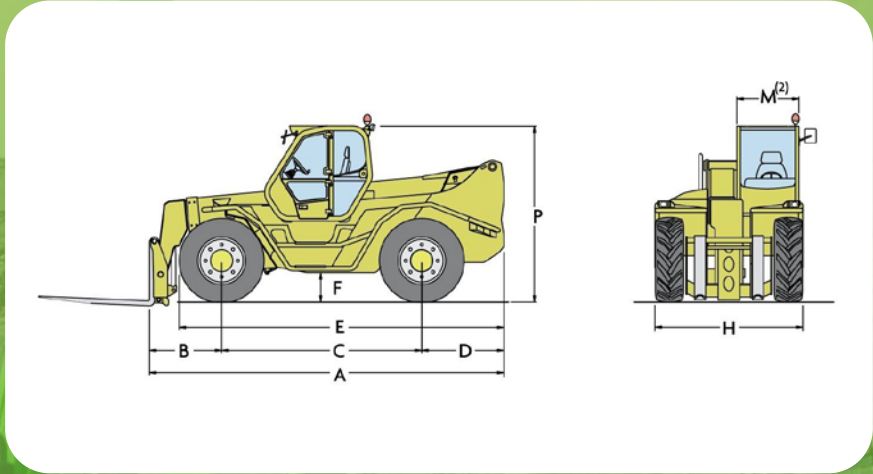
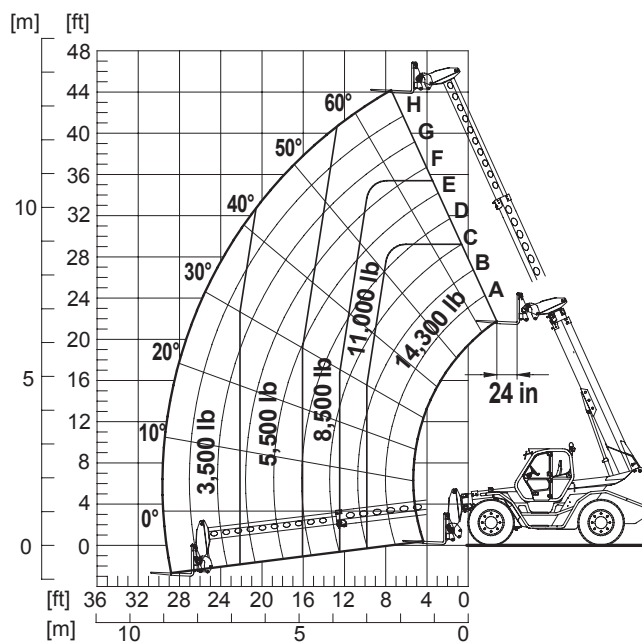


For reference only. Operators manual should be consulted and adhered to.



- Power / 4 Cylinder Turbo Diesel Iveco/170 HP
- Transmission 2 Speed / Hydrostatic
- Maximum Speed 25 MPH
- Total Unladen Mass 34,100 LBS
- Boom Sideshift Standard
- Frame Leveling Standard / ±8%
- Load Sensing Hydraulic Pump (PSI-gal/min) 3,340-38
- Fuel Capacity 48.8 Gallons
- Hydraulic Oil Capacity 32 Gallons
- Tires 17.5/25
- Turning Radius 14'-1"
- 4 Wheel Drive / 3 Steering Modes Standard
- Control and Command Center Electronic MERlin

P 65.14 HM WITH FORKS



Dimensions

A	19'-4"	D	4'-4"	H	7'-10"
B	4'-4"	E	17'-2"	M ⁽²⁾	3'-3"
C	10'-6"	F	1'-5"	P	9'-4"

⁽²⁾ Internal Width

DEALER INFORMATION: