

**MERLO**

▲ For reference only.
Operators manual should be consulted and adhered to.

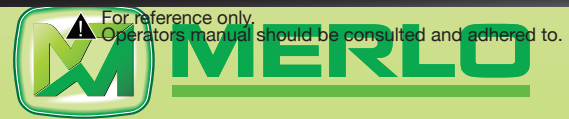
P 40.17 US STABILIZERS

- **MAXIMUM LOAD CAPACITY: 8,800 LBS**
- **MAXIMUM LIFT HEIGHT: 54' 8"**
- **MAXIMUM REACH: 41' 0"**
- **LOAD CAPACITY AT MAXIMUM LIFT HEIGHT: 5,500 LBS**
- **LOAD CAPACITY AT MAXIMUM FORWARD REACH: 1,100 LBS**

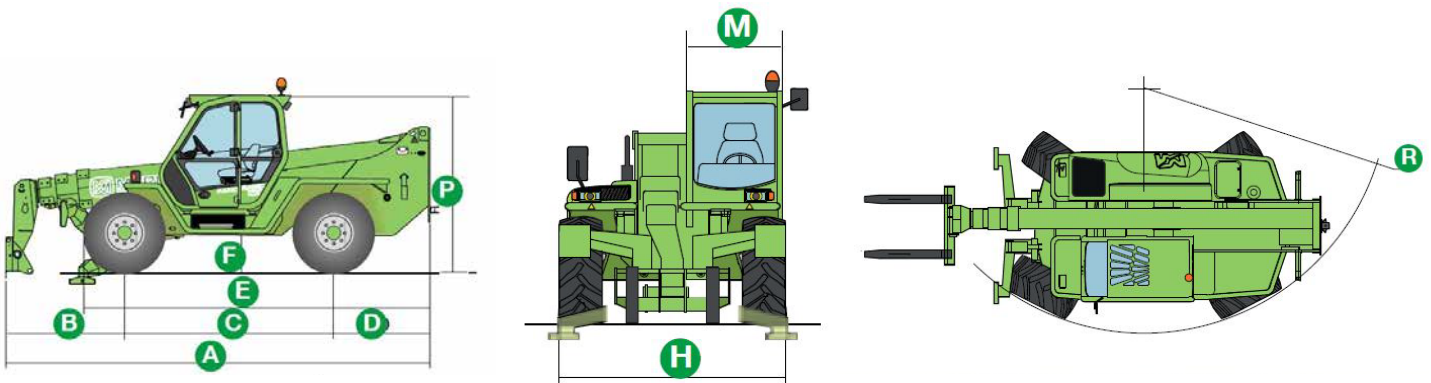
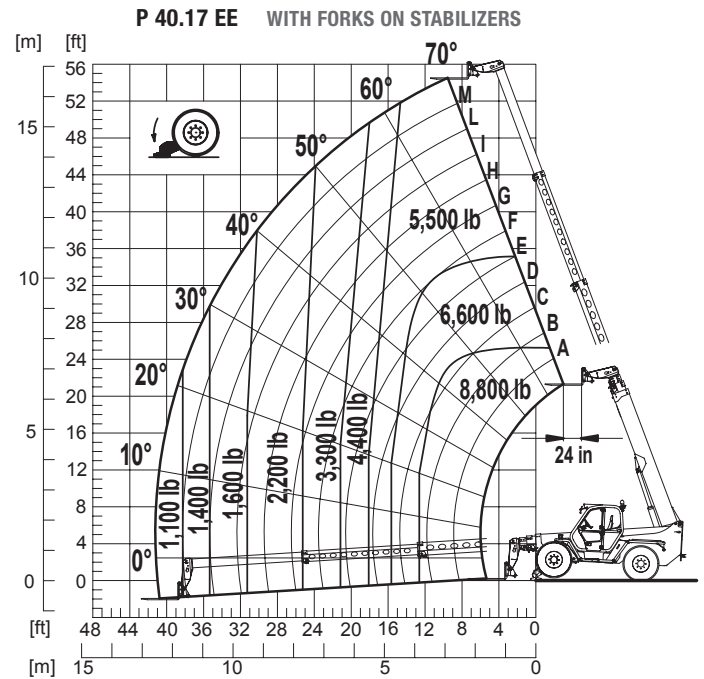




SPECIFICATIONS: P 40.17 US STABILIZERS



- Power / 4 Cylinder Turbo Diesel Deutz/101 HP
- Transmission 2 Speed / Hydrostatic
- Maximum Speed 25 MPH
- Total Unladen Mass 22,320 LBS
- Boom Sideshift (Inches) Standard / 17
- Frame Leveling Standard / ±10%
- Load Sensing Hydraulic Pump (PSI-gal/min) 3,045-38
- Fuel Capacity 40 Gallons
- Hydraulic Oil Capacity 37 Gallons
- Tires 405/70-24
- 4 Wheel Drive / 3 Steering Modes Standard
- Hydraulic System Load-sensing
- Control and Command Center Electronic MERlin
- Independent Front Stabilizers Standard



Dimensions							
A	19' -0"	D	4' -3"	H	7' -9"	R	13' -3"
B	4' -9"	E	15' -7"	M	3' -3"		
C	9' -4"	F	1' -6"	P	8' -2"		

DEALER INFORMATION: