



P 60.10

- **MAXIMUM LOAD CAPACITY: 13,200 LBS**
- **MAXIMUM LIFT HEIGHT: 31' 3"**
- **MAXIMUM REACH: 17' 4"**
- **LOAD CAPACITY AT MAXIMUM LIFT HEIGHT: 6,600 LBS**
- **LOAD CAPACITY AT MAXIMUM FORWARD REACH: 3,300 LBS**



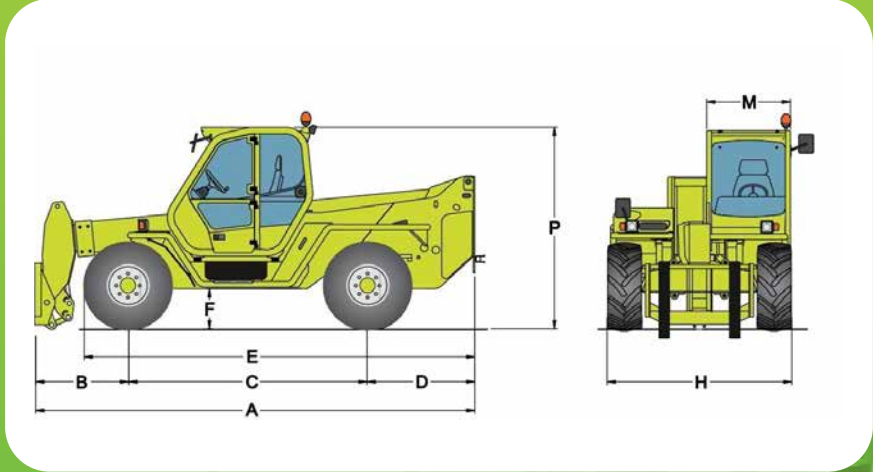
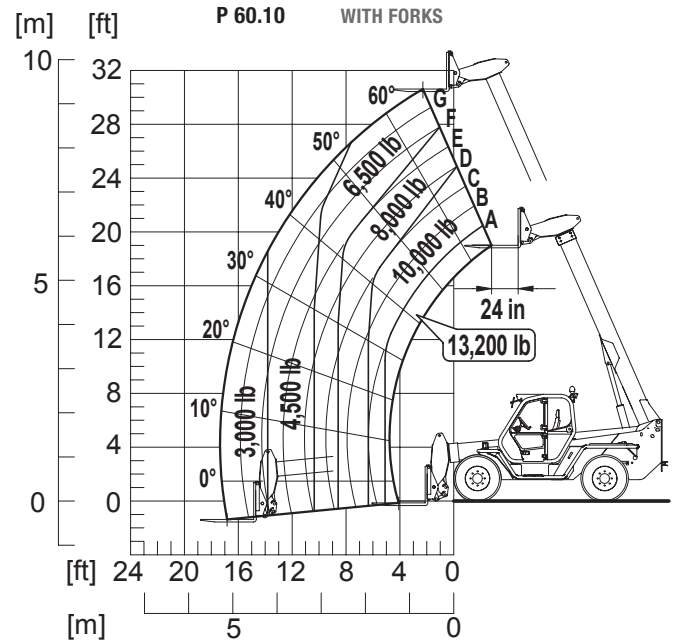


SPECIFICATIONS: P 60.10



For reference only. Operators manual should be consulted and adhered to.

- Power / 4 Cylinder Turbo Diesel Deutz/101 HP
- Transmission 2 Speed / Hydrostatic
- Maximum Speed 25 MPH
- Total Unladen Mass 22,000 LBS
- Boom Sideshift Standard
- Frame Leveling Standard / ±10%
- Load Sensing Hydraulic Pump (PSI-gal/min) 3,480-28.5
- Fuel Capacity 40 Gallons
- Hydraulic Oil Capacity 29 Gallons
- Tires 18/19.5
- Turning Radius 13'-0"
- 4 Wheel Drive / 3 Steering Modes Standard



Dimensions					
A	17'-5"	D	4'-2"	H	7'-4"
B	4'-0"	E	15'-2"	M	3'-3"
C	9'-5"	F	1'-6"	P	8'-0"

DEALER INFORMATION: