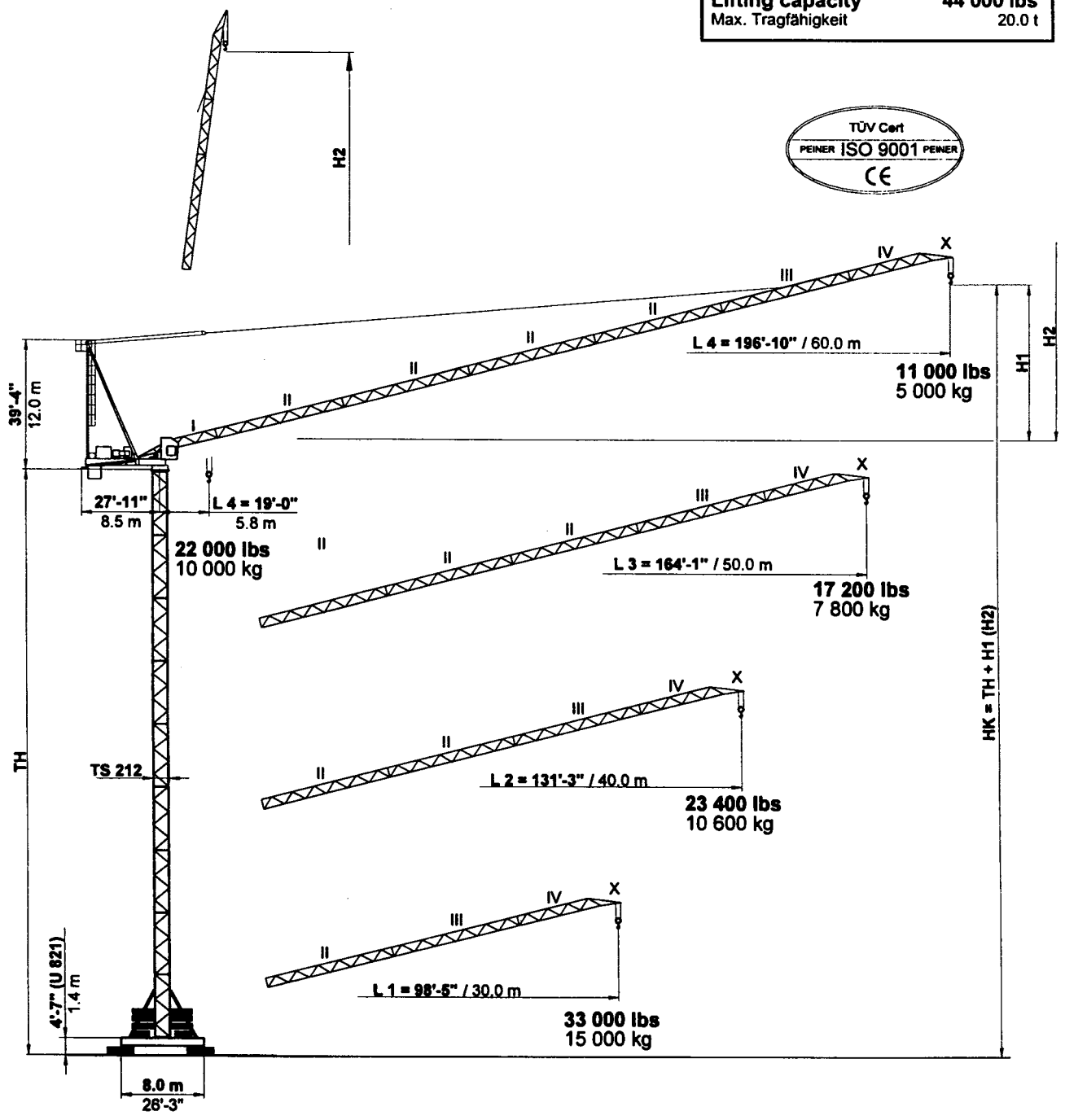
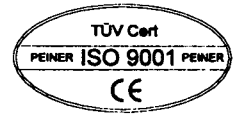




TOWER CRANES  
TEREX PEINER

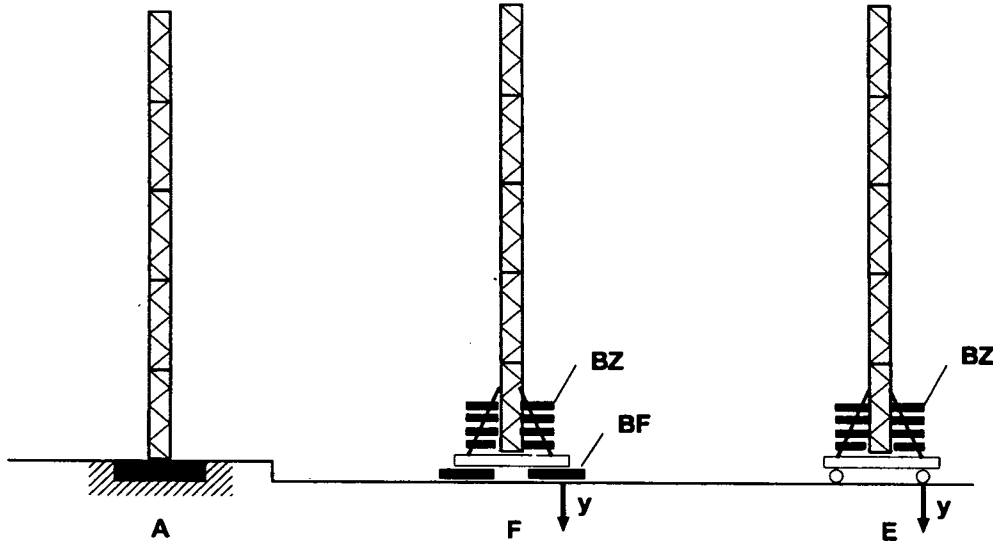
# PEINER SN 406

FEM 1001/3 USA	A3
Lifting capacity Max. Tragfähigkeit	44 000 lbs 20.0 t

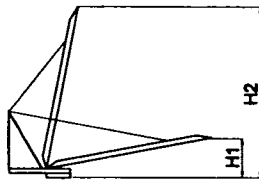




## SN 406 Combinations of tower section, hook heights, forces acting per corner, base ballast Turmkombinationen, Hakenhöhen, Eckkräfte, Zentralballast



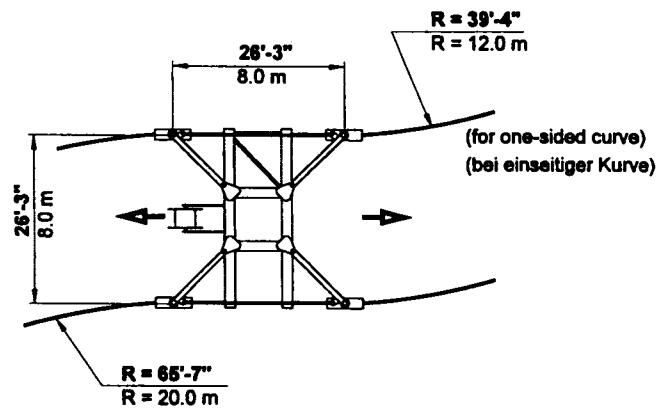
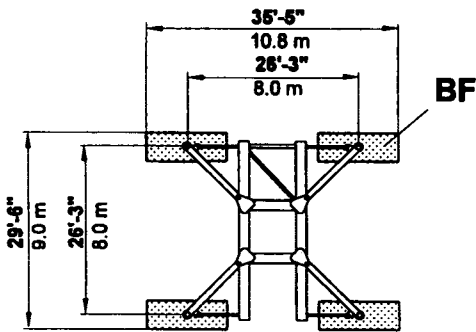
Version:



Hook height HK = Tower height TH + H1 (= TH + H2) Hakenhöhe HK = Turmhöhe TH + H1 (= TH + H2)				
	L 1	L 2	L 3	L 4
H1	20'-0" 6.1 m	29'-10" 9.1 m	39'-8" 12.1 m	49'-6" 15.1 m
H2	82'-4" 25.1 m	118'-1" 36.0 m	150'-7" 45.9 m	183'-1" 55.8 m

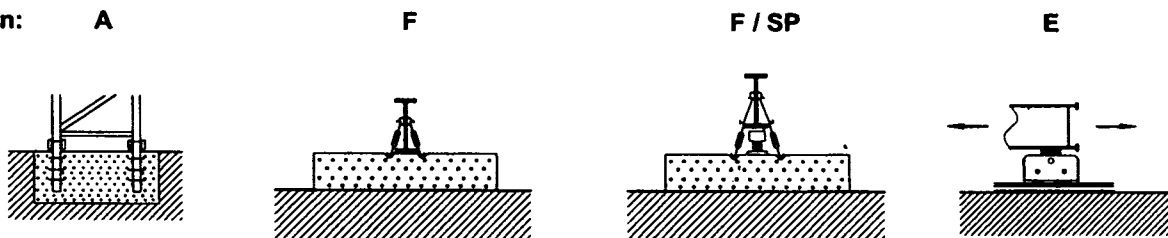
U 821

UF 821



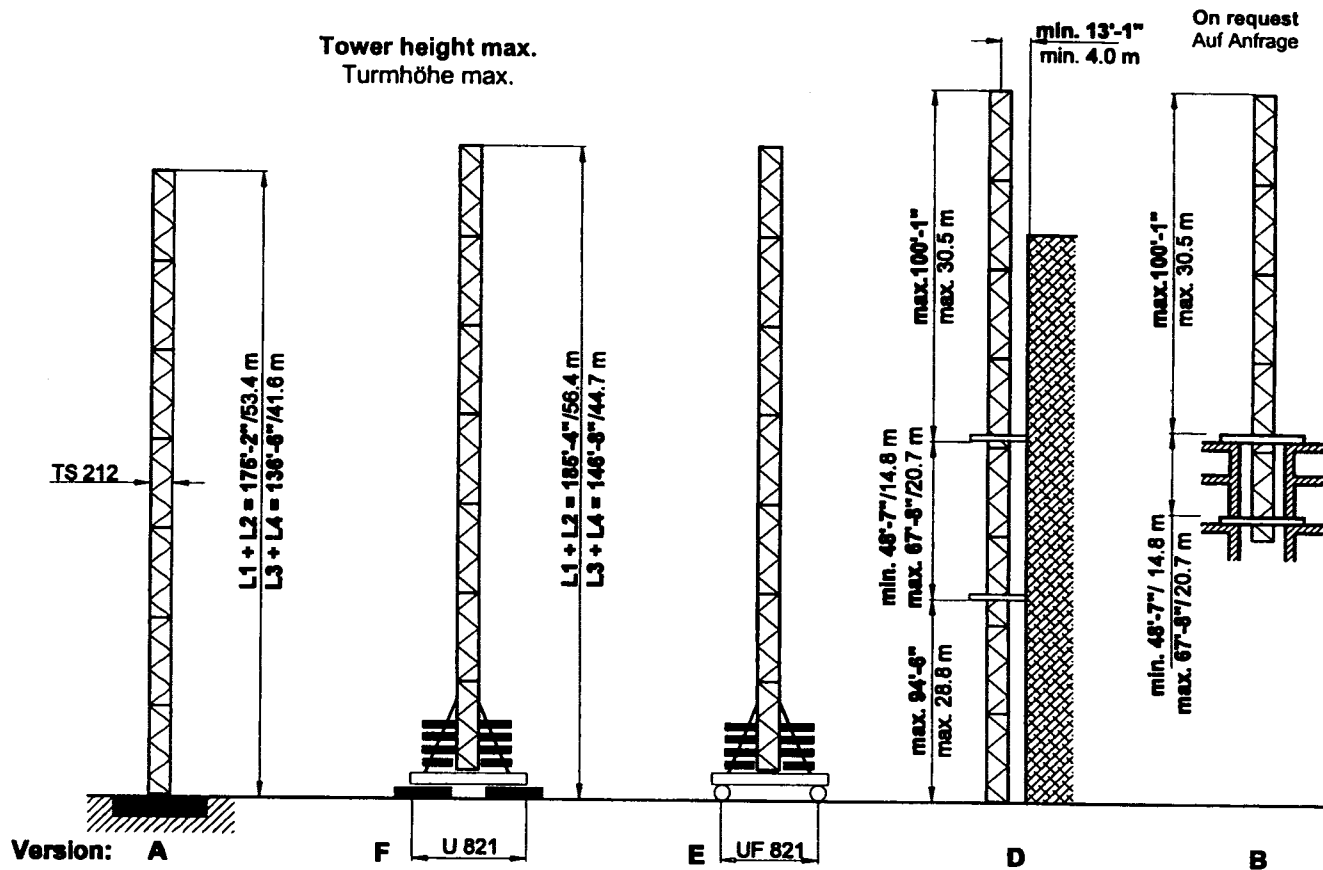
### Ground support Bodenauflagen

Version:





**SN 406 Turm / Tower / Tour TS 212**



TS 212	Version A		Version F			Version E							
	Tower	TH	Tower	TH	BZ + BF	in service	out of service	L1 + L2			L3 + L4		
TS 212.1	ft m	TSV 212 TS 212.1	ft m	kips t	kips kN	kips kN	kips t	in service kips kN	out of service kips kN	kips	in service kips kN	out of service kips kN	
9 x TS 212.1	175'-2" * 53.4 *	1 x TSV 212 8 x TS 212.1	185'-4" 56.5				203 92.4	244 1084	259 1150				
8 x TS 212.1	156'-10" * 47.5 *	1 x TSV 212 7 x TS 212.1	166'-0" 50.6				203 92.4	248 1101	254 1129				
7 x TS 212.1	136'-6" 41.6	1 x TSV 212 6 x TS 212.1	147'-8" 44.7				174 79.2	231 1028	222 986	203 92.4	220 979	271 1206	
6 x TS 212.1	117'-2" 35.7	1 x TSV 212 5 x TS 212.1	127'-4" 38.8	On request Auf Anfrage			145 66.0	215 956	191 848	203 92.4	223 992	254 1128	
5 x TS 212.1	98'-9" 29.8	1 x TSV 212 4 x TS 212.1	108'-11" 32.9				116 52.8	195 867	166 740	145 66.0	200 891	214 953	
4 x TS 212.1	78'-5" 23.9	1 x TSV 212 3 x TS 212.1	89'-7" 27.0				87 396	184 819	153 679	116 52.8	185 825	184 819	
3 x TS 212.1	59'-1" 18.0	1 x TSV 212 2 x TS 212.1	69'-3" 21.1				87 39.6	176 785	145 649	87 39.6	170 760	153 679	
2 x TS 212.1	40'-8" 12.1	1 x TSV 212 1 x TS 212.1	50'-10" 15.2				87 39.6	163 724	134 596	87 39.6	157 700	136 605	
1 x TS 212.1	20'-4" 6.2	1 x TSV 212	31'-6" 9.3				87 39.6	157 699	129 575	87 39.6	151 674	130 580	
Foundation Fundament 25'-3" x 25'-3" x 3'-9" 7.7 x 7.7 x 1.7 m					Stationary base Unterwagen U 821			Travelling base Unterwagen, kurvenfahrbar UF 821					
Anchor stools Fundamentfüße 4 x FF 212					BF 4 x 8.82 kips 4 x 4.0 t	BZ block 14.55 kips Block 6.6 t	Bogie / curve Fahrschemel / Kurve F 500						



\* only for L1 and L2; nur bei L1 und L2

TS 212.1 = 5.9 m / 19'-4 1/4"

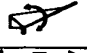



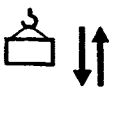
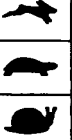



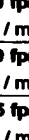

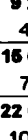
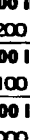


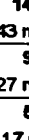
TSV 212 = 7.9 m / 25'-11"



## SN 406 Radius and capacity / Ausladung und Tragfähigkeit

Boom Ausleger	max. capacity max. Tragfähigkeit	Radius [ft] and capacity [kips] Ausladung [m] und Tragfähigkeit [t]																
		65.6 20.0	75.5 23.0	82.0 25.0	98.4 30.0	103.0 31.4	114.8 35.0	129.8 39.5	131.2 40.0	139.4 42.5	147.6 45.0	155.8 47.5	164.0 50.0	172.2 52.5	180.4 55.0	188.6 57.5	196.8 60.0	
L4	196.8 60.0																	
L3	164.0 50.0																	
L2	131.2 40.0	10.5 - 72.2 3.2 - 22.0	44.0 20.0	42.1 19.1	38.8 17.5	31.7 14.4	30.2 13.7	28.9 12.2	23.6 10.7	23.4 10.6								
L1	98.4 30.0	6.6 - 75.5 2.0 - 23.0	44.0 20.0	44.0 20.0	40.1 18.2	33.0 15.0												
		 <b>44.0 kips</b> 20.0t																
		 <b>22.0 kips</b> 10.0t																
L4	196.8 60.0	19.0 - 103.0 5.8 - 31.4	22.0 10.0	22.0 10.0	22.0 10.0	22.0 10.0	22.0 10.0	19.6 8.9	17.2 7.8	17.0 7.7	16.9 7.2	15.0 6.8	14.1 6.4	13.4 6.1	12.8 5.8	12.1 5.5	11.5 5.2	11.8 5.0
L3	164.0 50.0	17.8 - 129.8 4.5 - 39.5	22.0 10.0	22.0 10.0	22.0 10.0	22.0 10.0	22.0 10.0	22.0 10.0	22.0 10.0	21.8 9.9	20.5 9.3	19.2 8.7	18.1 8.2	17.2 7.8				
L2	131.2 40.0	10.5 - 131.2 3.2 - 40.0	22.0 10.0	22.0 10.0	22.0 10.0	22.0 10.0	22.0 10.0	22.0 10.0	22.0 10.0	22.0 10.0								
L1	98.4 30.0	6.6 - 98.4 2.0 - 30.0	22.0 10.0	22.0 10.0	22.0 10.0	22.0 10.0												

## Speeds / Geschwindigkeiten

SR WB 66-125/4		t = 3.1 min																108 HP 79 kW
SR 10-190/3		v = 0 → 96 fpm (30 m)																2 x 16 HP 2 x 12 kW
SR WB 150/4		v = 0 → 1.02 rpm (min <sup>-1</sup> )																1 x 12 HP 1 x 9 kW
 <b>HK max. = 820 ft / 250 m</b> <b>6 - layers / 6 - Lagen</b>																<b>480 V / 60 Hz / 3 ph</b>		
Type SR WB 66-100/4F  [108 HP] [79 kW]												▶ 450 fpm 134 m / min	6 500 lbs 2 500 kg		▶ 225 fpm 67 m / min	11 000 lbs 5 000 kg	Total motor output 240 HP Motorenleistung ges. 180 kW without / ohne SR 10-190/3	
												▶ 290 fpm 85 m / min	9 200 lbs 4 200 kg		▶ 145 fpm 43 m / min	18 500 lbs 8 400 kg		
												▶ 180 fpm 54 m / min	16 600 lbs 7 100 kg		▶ 90 fpm 27 m / min	31 300 lbs 14 200 kg		
												▶ 115 fpm 34 m / min	22 000 lbs 10 000 kg		▶ 68 fpm 17 m / min	44 000 lbs 20 000 kg		
																Connected power Anschlußleistung	340 kVA	

## Counterweight / Gegengewichtsballast

Boom / Ausleger			L 1	L 2	L 3	L 4
Counterweight Gegengewicht	BG	[kips]	66.0	66.0	70.4	70.4
		[t]	30.0	30.0	32.0	32.0
		[kips]	6 x 11.0	6 x 11.0	2 x 2.2 6 x 11.0	2 x 2.2 6 x 11.0
		[t]	6 x 5.0	6 x 5.0	2 x 1.0 6 x 5.0	2 x 1.0 6 x 5.0



## SN 356/406 Dimensions and weights of transport Transportmaße und Transportgewichte

Mounting weights see operating manual!  
Montagegewichte siehe Betriebsanleitung!

	Designation Benennung		Dimensions [ft] Abmessungen [m]			Weight Gewicht kips / t	Volume Volumen ft <sup>3</sup> / m <sup>3</sup>	
			l	b	h			
1	Boom section I		19.8	7.4	5.9	3.6	864	
	Auslegerschuss I		6.03	2.25	1.79	1.64	24.3	
2	Boom section II		34.51	7.28	5.77	3.4	1449	
	Auslegerschuss II		10.52	2.22	1.76	1.54	41.1	
	Section L1 - L2		34.51	7.28	5.77	3.1	1449	
	Schuss L1 - L2		10.52	2.22	1.76	1.39	41.1	
	Section L2 - L3		34.51	7.28	5.77	2.9	1449	
	Schuss L2 - L3		10.52	2.22	1.76	1.32	41.1	
	Section L3 - L4		34.51	7.28	5.77	3.0	1449	
	Schuss L3 - L4		10.52	2.22	1.76	1.35	41.1	
Boom section III		34.91	7.28	6.07	3.7	1543		
Auslegerschuss III		10.64	2.22	1.85	1.66	43.7		
3	Boom section IV		22.15	5.61	6.89	2.6	856	
	Auslegerschuss IV		6.75	1.71	2.10	1.19	24.2	
4	Turntable with DA and slewing gear		13.19	8.33	7.71	29.5	847	
	Drehbühne mit DA und Drehwerk		4.02	2.54	2.35	13.4	24.0	
5	Counter jib		19.75	7.28	4.99	15.1	717	
	Gegenausleger		6.02	2.22	1.52	6.88	20.3	
6	Cab with support, railing, electrical panel		20.73	6.23	7.55	6.1	975	
	Kabine mit Podest, Geländer, Schaltschrank		6.32	1.90	2.30	2.78	27.6	
7	A-frame with ladder		38.39	6.86	3.22	9.8	848	
	Bockspitze mit Leiter		11.70	2.09	0.98	4.47	24.0	
8	Hoist winch with rope	66 WB		6.23	6.23	3.97	9.0	204
	Hubwinde mit Seil			1.90	2.51	1.21	4.10	5.8
9	Luffing winch with rope	66 WB		9.68	6.92	3.97	7.6	266
	Verstellwinde mit Seil			2.95	2.11	1.21	3.43	7.5
10	Counterweight ballast	BG		5.58	0.46	7.48	2.2	19
	Gegengewichtsballast			1.70	0.14	2.28	1.00	0.5
					5.58	1.44	10.10	11.0
11	Counterweight carriage		18.11	2.95	4.36	2.9	233	
	Ballastwagen		5.52	0.90	1.33	1.34	6.6	
12	Tower section Turmschuss with struts mit Streben	TS 212.1		19.52	7.78	8.01	9.13	1216
				5.95	2.37	2.45	4.14	34.4
				TSV 212	31.17	9.84	10.00	20.33
9.50	3.00	3.05	9.22		86.9			
13	Travelling base, folded	UF 821		41.01	9.74	7.05	35.05	2816
	Unterwagen, kurvenfahrb., geklappt			12.50	2.97	2.15	15.90	79.8
14	Stationary base	U 821		34.55	9.06	2.79	17.13	873
	Unterwagen, stationär			10.53	2.76	0.85	7.77	24.7
15	Central ballast block	BZ		14.77	6.73	1.31	14.55	130
	Zentralballaststein			4.50	2.05	0.40	6.60	3.7
16	Foundation pad	BF		9.84	3.94	2.46	13.22	95
	Fundamentblock			3.00	1.20	0.75	6.00	2.7
17	Accessoires Diverse Montageteile							



**TEREX PEINER** GmbH • Gottbillstr. 1-7 • D-54294 Trier, Germany  
Tel. (++49) 6 51 / 8 10 08-0 • Fax (++49) 6 51 / 8 93 00 u. 8 76 40

internet: <http://www.peiner.com>  
e-mail: [terex@peiner.com](mailto:terex@peiner.com)