



Hydraulic Crawler Crane

KOBELCO

CK1100G

Max. Lifting Capacity : 110 US Tons

Max. Crane Boom Length : 200 ft

Max. Fixed Jib Combination : 190 ft + 60 ft





CK1100G CONTENTS

2 SPECIFICATIONS

6 G-MODE

7 LMI

8 WINCH PERFORMANCE

9 GENERAL DIMENSIONS

10 DIMENSIONS & WEIGHT

13 TRANSPORTATION PLAN

14 SELF ASSEMBLY PROCEDURE

15 COUNTERWEIGHT SELF-REMOVAL DEVICE

16 BOOM & JIB ARRANGEMENTS

17 WORKING RANGES

20 SUPPLEMENTAL DATA

21 LIFTING CAPACITY

29 CLAMSHELL DATA

32 BARGE DATA

CK1100G SPECIFICATIONS

General Description



Type	Crawler mounted, Lattice boom, Hydraulic controlled
Maximum lift capacity	220,000 lbs (99,800 kg) @ 11' operating radius (40' boom)
Basic boom length	40' (12.2 m)
Maximum boom length	200' (61.0 m)
Basic boom & jib length	80' + 30' (24.4 m + 9.1 m)
Maximum boom & jib length	190' + 60' (57.9 m + 18.3 m)
Working weight	Approx. 198,500 lbs (90,020 kg)
Ground bearing pressure	Approx. 12.9 psi (101 kPa)
Gradeability	40%

Calculations to determine working weight, ground bearing pressure, and gradeability include the weight of the upper and lower works of the crane, counterweights, and carbody weights, 40' boom and hook block.

General Dimensions

Height to top of gantry (lowered)	10'10" (3.31 m)
Width of upper machine w/operator's cab	9'10" (2.99 m)*
Radius of rear end (counterweights)	15'5" (4.70 m)
Counterweight ground clearance	3'8" (1.12 m)
Center of rotation to boom foot pin	3'7" (1.10 m)
Height from ground to boom foot pin	5'10" (1.77 m)
Height over gantry (raised)	20'4" (6.19 m)
Overall length of crawlers	20'7" (6.28 m)
Overall width of crawlers	17'2" (5.24 m)
Center to center, idler to sprocket	17'10" (5.44 m)
Shoe width	36" (0.91 m)
Ground clearance of body	15" (0.39 m)

Upper Machinery

Power Plant:

Diesel engine - make and model	Hino J08E-UV (complies with Interim "Tier 4")
No. of cylinders	6
Bore X stroke	4-13/16" x 5-7/8" (122 mm x 150 mm)
Cycles	4
Total displacement	469 cu.in. (7.684 l)
Rated output SAE GROSS	285 HP / 2,100 rpm (213 kW / 2,100 min ⁻¹)
Maximum torque	750 lbs-ft / 1,600 rpm (1,017 Nm / 1,600 min ⁻¹)
Starter	24 Volts / 5.0 kW
Alternator	24 Volts / 90 Amp
Batteries	Two 12 volt, 136 AH/5 HR capacity series connected.
Radiator	Corrugated type core, thermostatically controlled, with cleanout screen.
Throttle	Twist grip type hand throttle, electrically controlled, in conjunction with floor mounted pedal.
Air cleaner	Dry type with replaceable paper element.
Fuel tank capacity	106 US gal. (400 liters)
Lube oil filters	Full flow and by-pass type with element type.
Fuel filter	Replaceable paper element.

Working Speed

Hoist line speed (front and rear drums)	390 ~ 10 ft/min (120 ~ 3 m/min)
Lowering line speed (front and rear drums)	390 ~ 10 ft/min (120 ~ 3 m/min)
Boom hoist line speed (front and rear drums)	230 ~ 6.6 ft/min (70 ~ 2 m/min)
Boom lowering line speed (front and rear drums)	230 ~ 6.6 ft/min (70 ~ 2 m/min)
Swing speed (max.)	4.0 rpm
Travel speed (high/low)	1.07/0.71 mph (1.7/1.1 km/h)

Line speed based on single line, no load, and first layer of rope on the drum.



* - 10'5" wide with Catwalks on cab side only.
11' wide with Catwalks on both sides.

CK1100G

SPECIFICATIONS



Self Lifting Device - Standard Equipment

Counterweight and Carbody weight

Counterweight Base	1 x 18,200 (8,310 kg)
Counterweight (R)	2 x 12,700 (5,750 kg)
Counterweight (L)	2 x 12,700 (5,750 kg)
Total Counterweight	69,000 (31,310 kg)

Carbody weight	2 x 15,900 (7,200 kg)
Total Carbody weight	31,800 (14,400 kg)



Hydraulic system

Maximum pressure rating
4,626 psi (31.9MPa)

Cooling
Oil to air heat exchanger

Filtration
Full flow filters with replaceable
paper elements

Reservoir capacity
116.2 US gal. (440 liters)

Hydraulic pumps:

Load hoist, boom hoist, and propel
2 piston pumps, max flow rate
67.3 US gal/min x 2 (255 ℓ/min x 2)

Swing

1 piston pump, max flow rate
46.7 US gal/min (177 ℓ/min)

Control system and auxiliary

2 Gear pumps, max flow rate
16.3 US gal/min + 10.6 US gal (61.6 ℓ/min + 40.5 ℓ/min)

Brake cooling system

2 gear pumps, max flow rate
19.4 US gal/min x 2 (73.5 ℓ/min x 2)

Gantry

This high folding type gantry is fitted with a sheave frame for boom reeving. Hydraulic lift is standard. It provides full up, full down positions with linkage.

Operators cab

Totally enclosed from weather, this full-vision cab has safety glass all around. The adjustable, high-backed seat with armrest is capable of adjustment with or without the control console. Auxiliary controls and instruments are on a side mounted console. A signal horn, windshield wipers, air conditioner/heater, and swing limiter are all standard features.

Controls

At the operator's right are console-mounted adjustable short levers for the front and rear drum and the boom hoist control. Fine inching control and free fall activation switches are built in to the levers. Beside the seat on the right are two short levers for propel control, plus individual speed dial controls for front, rear, and boom drums. At the left is the console mounted swing lever, an optional 3rd drum control, switches for the front, rear, and boom drum pawls, and the engine start/stop key. A swing brake control switch and signal horn button are on the swing lever.

Swing:

Swing unit

Hydraulic motor driving spur gears through planetary reducers to output swing pinion for 360 degree rotation.

Swing brake

Spring set hydraulically released multiple disk brake mounted on swing motor.

Swing circle

Single row ball bearing with an integral internally cut swing gear.

Swing lock

Manual, 4 position lock for transportation.

CK1100G SPECIFICATIONS



Line pull:

Max. line pull (single line) - 46,800 lbf (208 kN)

Rated line pull - 25,200 lbf (112 kN)

Lower Machinery

Crawlers:

Crawler assemblies can be hydraulically extended or retracted for wide track operation or retracted for transportation. Crawler belt tension adjusted with hydraulic jack and maintained by shims between the idler block and frame.

Crawler drive:

The independent two speed hydraulic propel drive is built into each crawler side frame. Each drive consists of a hydraulic motor driving a propel sprocket through a planetary gear box. The hydraulic motor and gear box are built into the crawler side frame within the shoe width.

Crawler brakes:

Spring set, hydraulically released, multiple disk-type parking brakes are built into each propel drive.

Steering mechanism:

A hydraulic propel system provides both skid steering and counter rotating steering.

Crawler shoe:

66 shoes - 36" wide, each crawler.

Track rollers:

The track rollers are sealed for maintenance free operation.

Front drum:

Front and rear drums for load hoist powered by hydraulic variable plunger motors, driven through planetary reducers.

Negative brake

A spring-set, hydraulically released multiple disk brake is mounted on the hoist motor and operated through a counter-balance valve.

Drum lock External ratchet for locking drum

Drums:

Front drum -

614 mm P.C.D. x 617 mm Lg., grooved for 26 mm wire rope. Rope capacity is 771' (235 m) working length and 1,181' (360 m) storage length.

Rear drum -

614 mm P.C.D. x 617 mm Lg., grooved for 26 mm wire rope. Rope capacity is 525' (160 m) working length and 1,181' (360 m) storage length.

3rd drum (optional) -

550 mm P.C.D. x 545 mm Lg., grooved for 22 mm wire rope. Rope capacity is 476' (145 m) working length and 1,099' (335 m) storage length.



CK1100G SPECIFICATIONS

Crane Attachments

Boom:

The welded lattice construction uses tubular, high-tension steel chords with pin connections between sections.

Maximum boom length	200' (61.0 m)
Basic boom length	40' (12.2 m)
Boom base section	19'7" (5.97 m)
Boom tip section	22'8" (6.91 m)

Boom insert (optional):

Optional boom inserts are available to provide extension capabilities. They are robotic welded, laser aligned, lattice constructed with tubular, high-tension steel chords and pin connections.

Boom insert	10' (3.1 m), 20' (6.1 m), 40' (12.2 m)
-------------	----------------------------------------

Jib (optional):

Jib inserts are available to provide extension capabilities. The optional jib employs welded lattice construction with tubular, high-tension steel chords with pin connections between sections.

Maximum jib length	60' (18.3 m)
Basic jib length	30' (9.1 m)
Jib base section	15'9" (4.8 m)
Jib tip section	16'5" (5.0 m)
Jib insert	10' (3.1 m), 20' (6.1 m)

Jib is useable on booms of 80' (24.4 m) through 190' (57.9 m)



Auxiliary sheave (optional):

Auxiliary sheave is extendible on booms of 40' (12.2 m) through 190' (57.9 m)

Boom hoist reeving:

Twelve (12) parts of 5/8" (16.0 mm) diameter high strength wire rope.

Boom backstops:

Telescopic type with spring bumper

Standard Equipment

Lights:

- Two (2) front flood lights
- One (1) cab inside light

Gauges and warning display

Gauges

- One (1) tachometer
- One (1) hour meter
- One (1) fuel gauge
- One (1) water temperature

Warning display

- Battery charge
- Engine oil pressure
- Air cleaner
- Engine oil filter
- Control main pressure
- Hydraulic oil temperature
- DPF condition indicator

Others

- Air conditioner/heater
- Drum turn indicator (front/rear)
- Foot pedal / throttle
- Electric transfer pump
- Counterweight self-removal device
- KCross Telematics
- Free fall winches

Safety Service

- Function lock lever
- Swing Limiter
- Boom over hoist limit switch
- Signal horn
- Front/rear hoist drum lock
- Swing Limiter (Buzzer, lamps, or stops)
- Overload prevention device (LMI)
- Hook over hoist shut off (Anti-two-block)
- Boom angle indicator
- Travel alarm

Safety Service (cont)

- Level indicator
- Boom hoist drum lock
- Swing locks, anti drift, and mechanical
- Boom backstops
- Boom base catwalk
- Upper machinery catwalk, handrails and ladder

Tools and Accessories

A set of tools and accessories are furnished.

Optional Equipment

- Third drum
- Hook block
- Hook ball
- Auxiliary sheave
- Fixed jib
- Boom inserts
- Carbody erection cylinder

CK1100G SPECIFICATIONS

G-Mode

The G-modes are a standard exclusive energy and fuel saving system, with up to 30% in fuel savings. The G-Mode eliminates needless operations and engine functions allowing for reduced fuel consumption by using three basic modes that are all operator selectable.

Auto Idling Stop Mode (AIS):

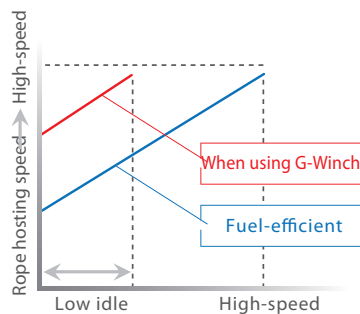
An Industry First

The AIS mode can conserve fuel by stopping the engine, with an operator prompt, after 10 seconds of idling time. Restarting the engine is simple by just twisting the throttle.

G-Winch Mode:

An Industry First

The G-winch mode can produce maximum winch line speed at a low engine RPM.



The high speed mode allows the line to be raised or lowered at maximum line speed without raising engine speed when lifting without a load.

G-Engine Mode:

An Industry First

The G-engine mode limits maximum engine speed to 1,750 RPM and controls the pumps to make engine operation in the most efficient condition.



G-Engine



G-Winch



AIS



Exhaust cleaning DPR:

The DPR (diesel particulate active reduction system) burns PM (particulate matter) collected by the DPF (diesel particulate filter) from the diesel exhaust gas, increasing the PM collection efficiency of the DPF, and recovering to purify the exhaust. This means that the exhaust gas from the diesel engine is cleaner, conforming with current EPA Interim Tier 4 regulations.

A new clean diesel system - although diesel engines consume less fuel and emit less CO₂ than gasoline engines, they also emit more harmful particulate matter and nitrogen oxide (NO_x). The "new clean energy system" engine utilizes a DPF to reduce particulate matter, which is also kept to a minimum using negative ions. This system requires the use of low sulfur diesel.

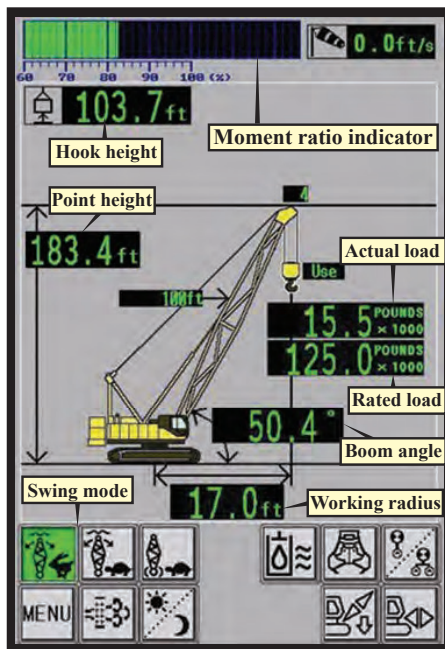
* Warning: High sulfur diesel will damage the engine.

CK1100G SPECIFICATIONS

Load Moment Indicator (LMI)

The Kobelco newly designed 12" touch panel screen with sunshade and screen protector is an industry first. This intuitive and easy to understand new touch screen monitor gives the operator a full display of essential data. Universal pictograms are used providing easy visual recognition, making this new technology easy to read and understand the information. This new monitor includes: Hook Height, Engine Speed, Display Lamp of standard functions, Gauges, Over-Swing Prevention Device, Switches, and Error Messages.

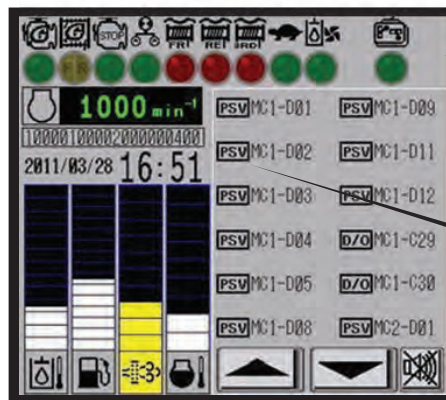
Moment Limiter (Left Side)



Main Menu



Gauges (Right Side)



Display Lamp

Display lamp	Remote control connection
G-Engine	Oil cooler operation
G-Winch	Free fall (auxiliary)
AIS operation	Free fall (3rd)
Slow speed state	

Error Message

Touch to display details in a pop-up window.

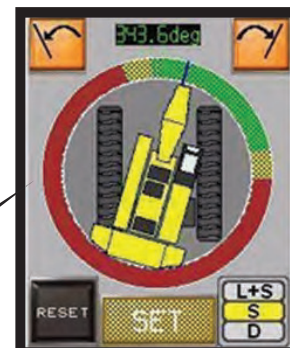
Gauges

Hydraulic oil temperature
Fuel gauge
Diesel particulate filter gauge
Coolant temperature

* Figures for the above gauges are only shown when the bar is touched.

Over-Swing Prevention

An over-swing preventative device is standard. It limits the swing of the crane. Configuration is simple and can be done from the touch panel.





CK1100G SPECIFICATIONS

Winch Performance Data

Note:

Line speed and line pull based on Hino J08E-UV at 2,100 rpm.

Line speed and line pull based on single line.

Max. line pull is based on referential performance, not wire rope strength.

Front & Rear Drum

Wire Rope Diameter = 26 mm

Rated Line Pull = 25,200 lbf (112 kN)

Maximum Line Pull = 46,800 lbf (208 kN)

Total Storage Capacity = 1,185 ft (361.2 m)

		Line speed (ft/min)					
		Layer	1	2	3	4	5
Line Pull (lbs)	0	393	421	449	476	504	
	5,000	393	421	449	476	504	
	10,000	387	414	440	467	494	
	15,000	360	360	348	348	348	
	20,000	270	270	261	261	261	storage only
	25,200	214	214	199	187	173	
	30,000	166	149	140	138	136	
	35,000	120	118	114	109		
	40,000	100	95				
Storage Capacity (ft)		139	149	159	169	179	189

Third Drum (for Load hoist)

Wire Rope Diameter = 22 mm

Rated Line Pull = 17,000 lbf (78.5 kN)

Maximum Line Pull = 32,400 lbf (144 kN)

Total Storage Capacity = 1,099 ft (334.9 m)

		Line speed (ft/min)					
		Layer	1	2	3	4	5
Line Pull (lbs)	0	394	394	394	394	394	
	5,000	394	394	394	394	394	
	10,000	227	227	227	227	227	
	15,000	147	152	161	170	179	storage only
	17,000	142	151	160	169	178	
	20,000	140	149	158	167	176	
	25,000	138	147	155	164	172	
	30,000	136	144				
Storage Capacity (ft)		130	139	148	157	166	175

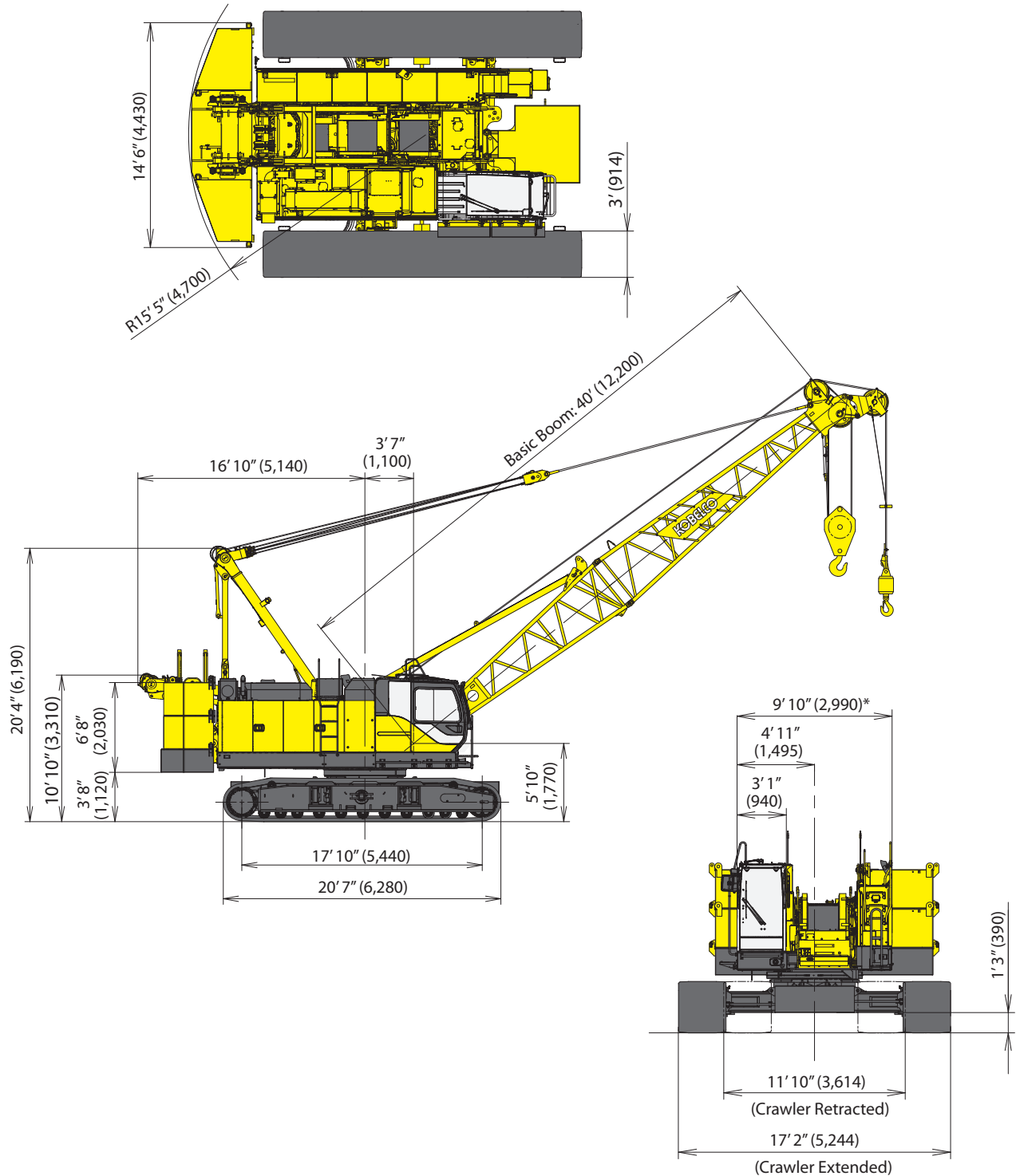
Wire Rope Specifications

Use	Construction	No load diameter	Length	Safety Factor	Required minimum breaking strength
Front drum	6 x 29 Filler IWRC Right hand lay, Regular lay	1.049" to 1.070" (26.65 mm to 27.17 mm)	771ft (235 m)	3.5: 1	120,048 lbf (534 kN)
Rear drum	6 x 29 Filler IWRC Right hand lay, Regular lay	1.049" to 1.070" (26.65 mm to 27.17 mm)	525ft (160 m)	3.5: 1	120,048 lbf (534 kN)
Boom drum	6 x 31 P Warrington seal Right hand lay, Regular lay	0.646" to 0.658" (16.40 mm to 16.72 mm)	492ft (150 m)	3.5: 1	47,210 lbf (210 kN)
Third drum (Optional)	6 x 29 Filler IWRC Right hand lay, Regular lay	0.888" to 0.905" (22.55 mm to 22.99 mm)	476ft (145 m)	3.5: 1	81,606 lbf (363 kN)

CK1100G

SPECIFICATIONS

General Dimensions



* - 10' 5" wide with Catwalks on cab side only.
11' wide with Catwalks on both sides.

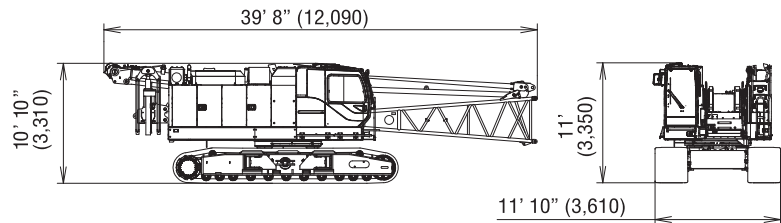
CK1100G SPECIFICATIONS

Dimensions and Weight

Dimensions: ft-in (mm) Weight: lbs (kg)

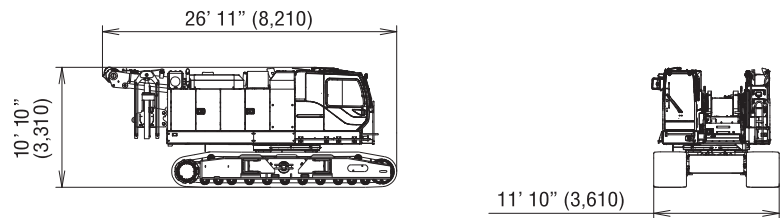
Base Machine - 1

Weight: 95,200 lbs (43,150 kg)
Boom base, gantry, crawlers, self removal unit,
and wire ropes (front, rear, and boom hoist)



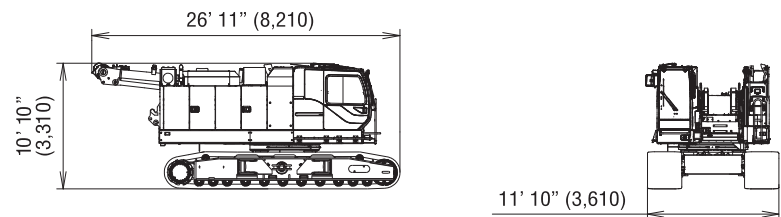
Base Machine - 2

Weight: 90,600 lbs (41,090 kg)
Gantry, crawlers, self removal unit, and
wire ropes (front, rear, and boom hoist)



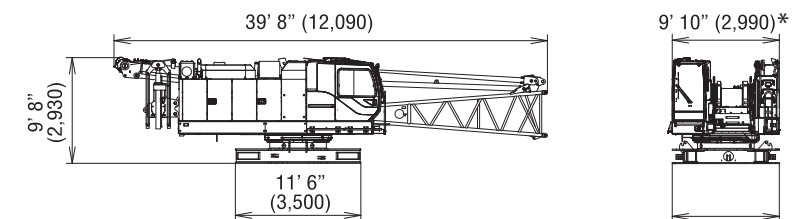
Base Machine - 3

Weight: 88,700 lbs (40,230 kg)
Gantry, crawlers, and
wire ropes (front, rear, and boom hoist)



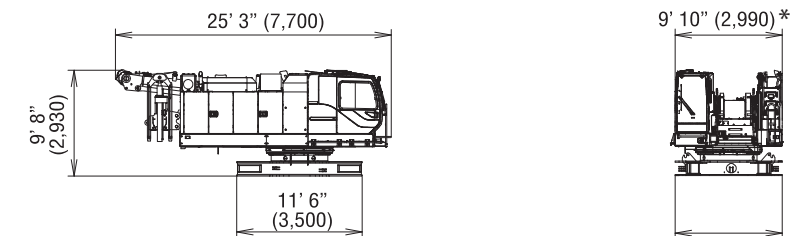
Base Machine - 4

Weight: 61,500 lbs (27,880 kg)
Boom base, gantry, self removal unit, and
wire ropes (front, rear, and boom hoist)



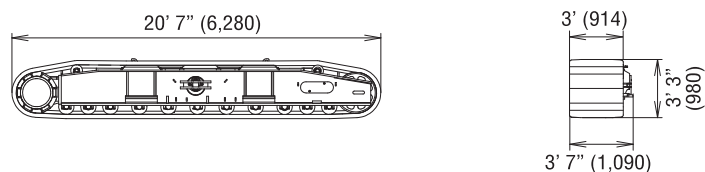
Base Machine - 5

Weight: 56,900 lbs (25,820 kg)
Gantry, self removal unit, and
wire ropes (front, rear, and boom hoist)



Crawler

Weight: 16,850 lbs (7,640 kg)



* - 10'5" wide with Catwalks on cab side only.
11' wide with Catwalks on both sides.

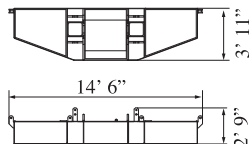
CK1100G

SPECIFICATIONS

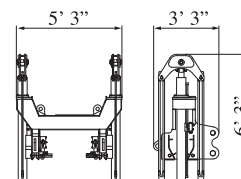
Dimensions and Weight

Dimensions: ft-in (mm) Weight: lbs (kg)

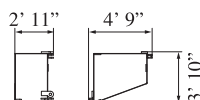
Counterweight Base
Weight: 18,200 lbs (8,310 kg)



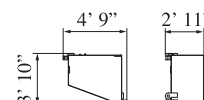
Self Removal Unit
Weight: 1,900 lbs (870 kg)



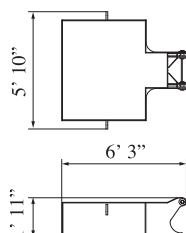
Counterweight (R)
Weight: 12,700 lbs (5,750 kg)



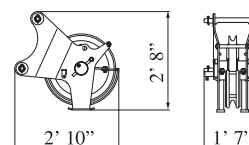
Counterweight (L)
Weight: 12,700 lbs (5,750 kg)



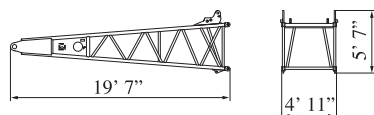
Carbody Weight
Weight: 15,900 lbs (7,200 kg)



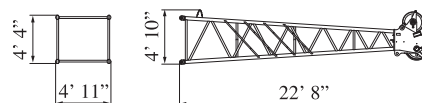
Auxiliary Sheave
Weight: 430 lbs (195 kg)



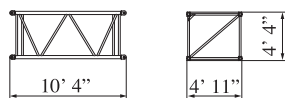
Boom Base
Weight: 3,400 lbs (1,517 kg)



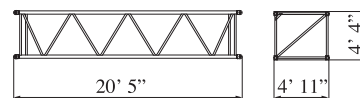
Boom Tip
Weight: 2,900 lbs (1,292 kg)
Includes cable roller and guy lines



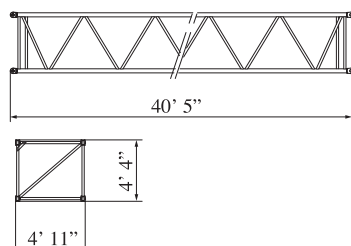
10 ft (3.0 m) Insert Boom
Weight: 800 lbs (364 kg)
Includes cable roller and guy lines



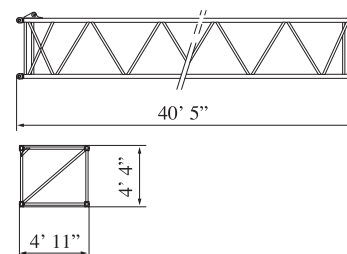
20 ft (6.1 m) Insert Boom
Weight: 1,400 lbs (613 kg)
Includes cable roller and guy lines



40 ft (12.2 m) Insert Boom
Weight: 2,400 lbs (1,098 kg)
Includes cable roller and guy lines



40 ft (12.2 m) Insert Boom (with lug)
Weight: 2,500 lbs (1,113 kg)
Includes cable roller and guy lines





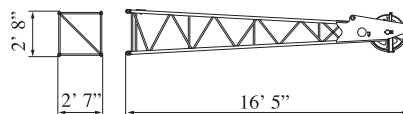
CK1100G SPECIFICATIONS

Dimensions and Weight

Dimensions: ft-in (mm) Weight: lbs (kg)

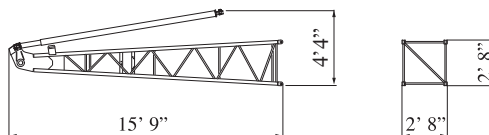
Jib Tip

Weight: 500 lbs (227 kg)
Includes cable roller.



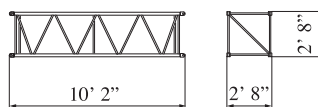
Jib Base and Strut

Weight: 1,400 lbs (637 kg)
Includes guy line.



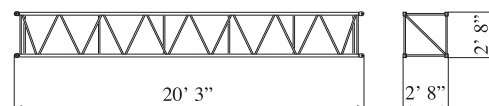
10 ft (3.0 m) Insert Jib

Weight: 280 lbs (128 kg)
Includes cable roller and guy line.



20 ft (6.1 m) Jib Insert

Weight: 480 lbs (218 kg)
Includes cable roller and guy line.



CK1100G SPECIFICATIONS

Transportation Plan

Refer to pages 10-12

Shipping plan for 150 ft Boom

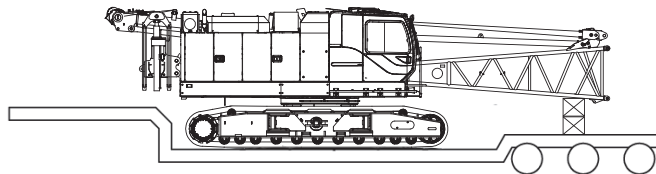
Description of Item	Weight		Trailer Loads			
	lbs	(kg)	#1	#2	#3	#4
Base Machine with Boom Base and Crawlers*	95,200	(43,150)	1			
Counterweight Base	18,200	(8,310)		1		
Counterweight (L)	12,700	(5,750)			2	
Counterweight (R)	12,700	(5,750)		1	1	
Carbody Weight	15,900	(7,200)				2
10 ft Insert Boom and Guy Line	800	(364)			1	
20 ft Insert Boom and Guy Line	1,400	(613)		1		
40 ft Insert Boom and Guy Line	2,400	(1,098)			1	
40 ft Insert Boom (w/ Lug) and Guy Line (A)	2,500	(1,113)				1
Boom Tip and Guy Line	2,900	(1,292)		1		
Jib Base and Guy Line	1,400	(637)				
10 ft Insert Jib and Guy Line	280	(128)				
20 ft Insert Jib and Guy Line	480	(218)				
Jib Tip	500	(227)				
75 Ton Block	3,000	(1,361)		1		
13 Ton Ball	800	(365)		1		
Ladder Assembly	90	(41)				1
Support Box	5,000	(2,268)				1
Approx. Total Shipping Weight		lbs (kg)	95,200 (43,150)	39,000 (17,691)	41,300 (18,712)	39,390 (17,822)

* Third drum is not included. Add 4,200 lbs if third drum is installed.

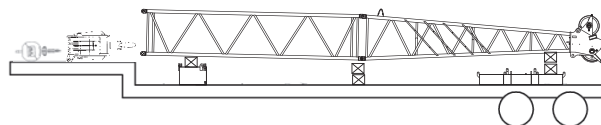
Loads for transportation were targeted at 45,000 lbs, 8' 6" wide, 48' long and 13' 6" high from ground, 48' step deck.

This may vary depending on truck/trailer weight, style of trailer and state law.

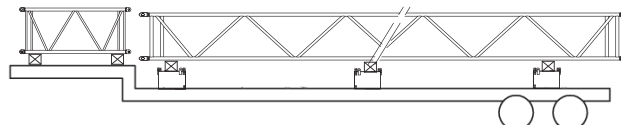
Trailer #1



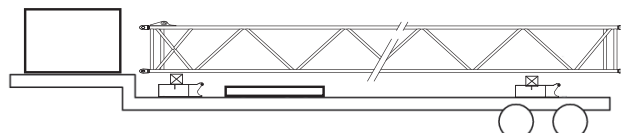
Trailer #2



Trailer #3

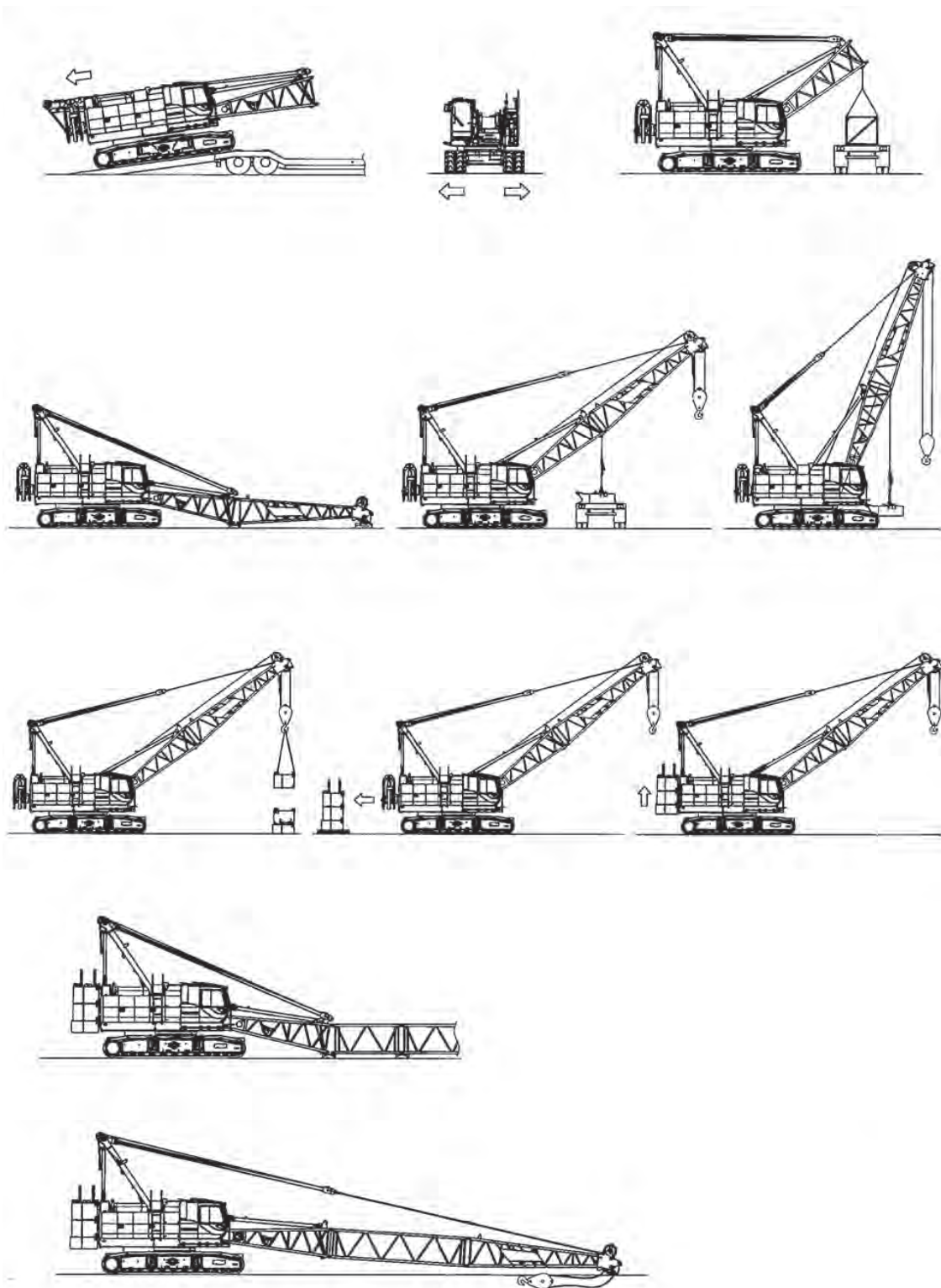


Trailer #4



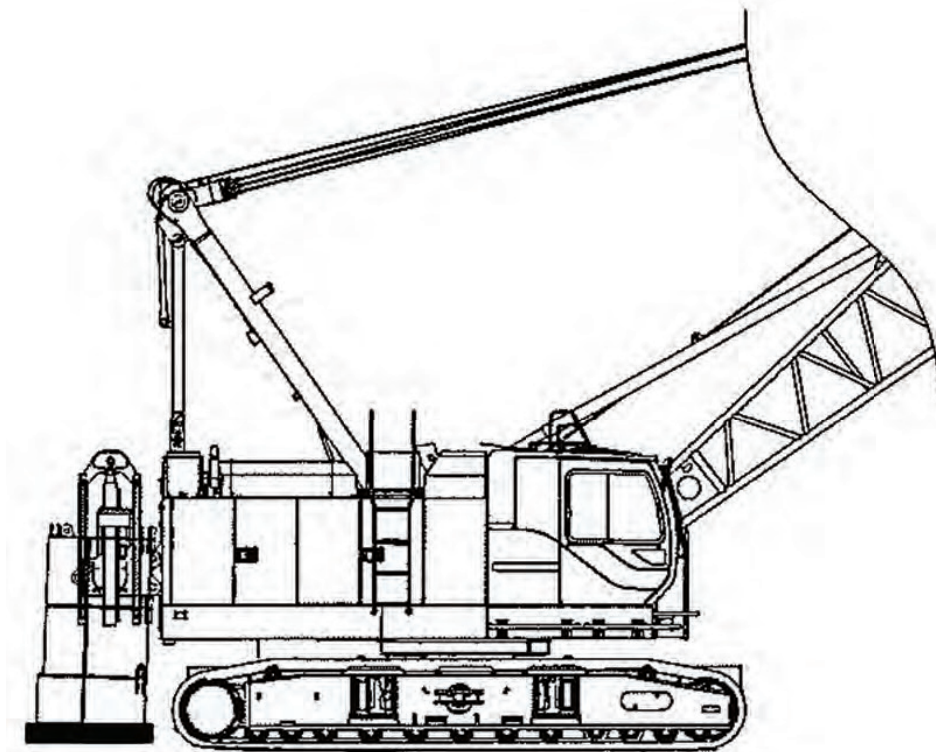
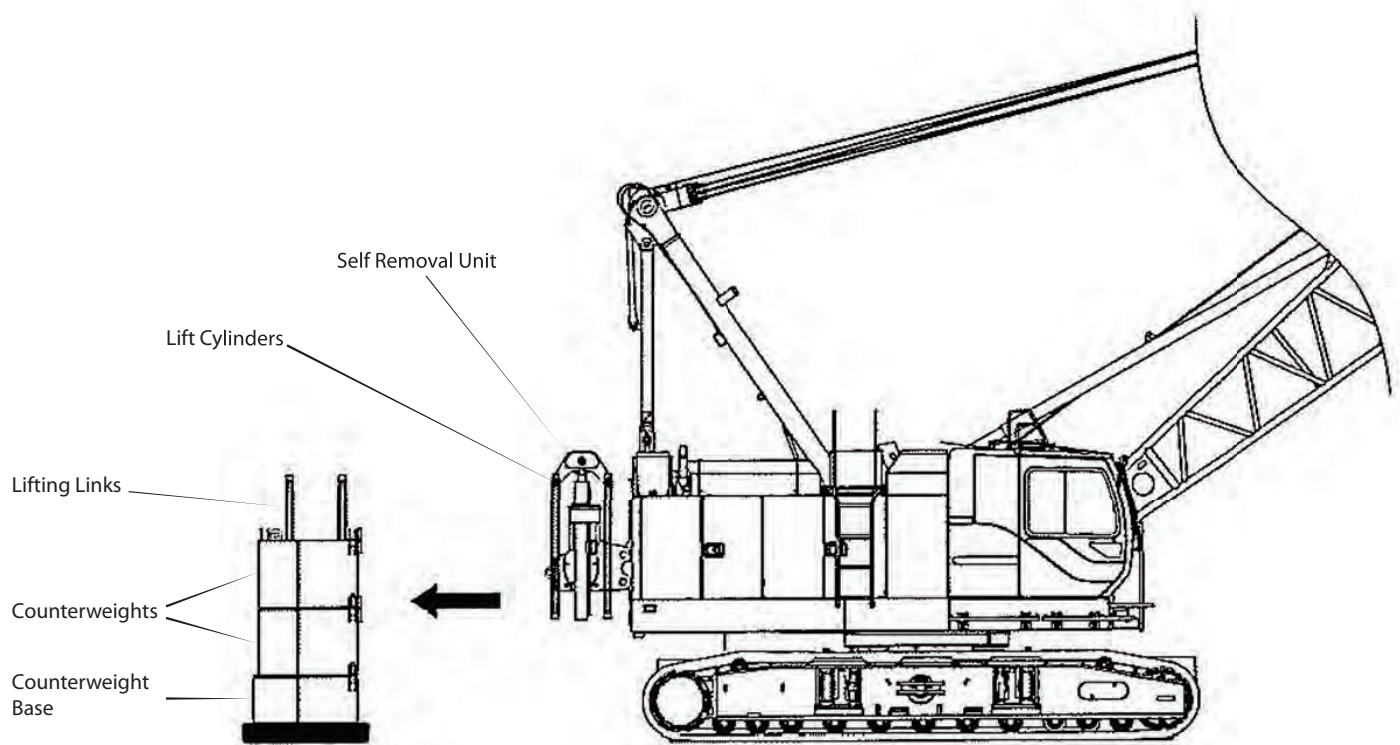
CK1100G SPECIFICATIONS

Self-Assembly Procedure



CK1100G SPECIFICATIONS

Counterweight Self-Removal Device



CK1100G SPECIFICATIONS

Boom and Fixed Jib Arrangement

Boom Arrangement

Boom length ft (m)	Boom arrangement
40 (12.2)	
50 (15.2)	
60 (18.3)	※
70 (21.3)	※
80 (24.4)	※
90 (27.4)	※
100 (30.5)	※
110 (33.5)	※
120 (36.6)	※
130 (39.6)	※
140 (42.7)	※

Boom length ft (m)	Boom arrangement
150 (45.7)	※
160 (48.8)	※
170 (51.8)	※
180 (54.9)	※
190 (57.9)	※
200 (61.0)	※

Symbol	Boom Length	Remarks
	20.0 ft (6.1 m)	Boom Base
	20.0 ft (6.1 m)	Boom Top
	10.0 ft (3.1 m)	Insert Boom
	20.0 ft (6.1 m)	Insert Boom
	40.0 ft (12.2 m)	Insert Boom
	40.0 ft (12.2 m)	Insert Boom with lug

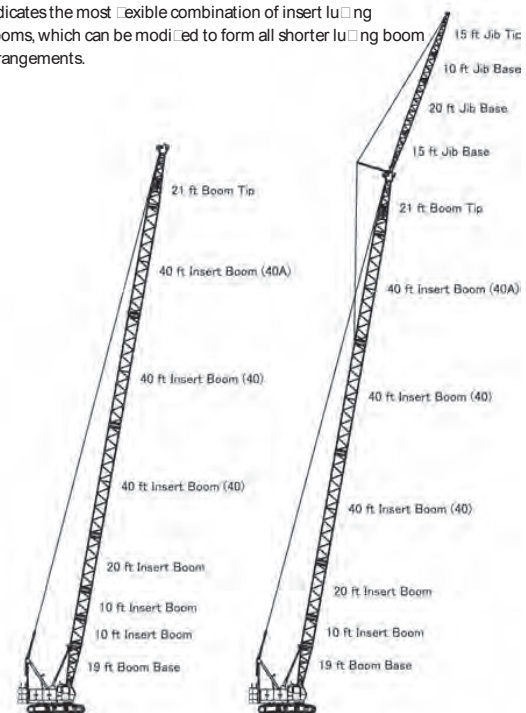
↗ mark shows the guy line installing position when the fixed jib is used.

※ indicates the most flexible combination of insert boom, which can be modified to form all shorter boom arrangements.

Fixed Jib Arrangement

Crane boom length	Jib length ft (m)	Jib arrangement
80 ft (24.4 m) 190 ft (57.9 m)	30 (9.1)	
	40 (12.2)	
	50 (15.2)	
	60 (18.3)	

Symbol	Jib Length	Remarks
	15 ft (4.6 m)	Jib Base
	15 ft (4.6 m)	Jib Top
	10 ft (3.0 m)	Insert Jib
	20 ft (6.1 m)	Insert Jib



Main Boom - 200 ft (61.0 m)

Main Boom - 190 ft (57.9 m)
Fixed Jib - 60 ft (18.3 m)

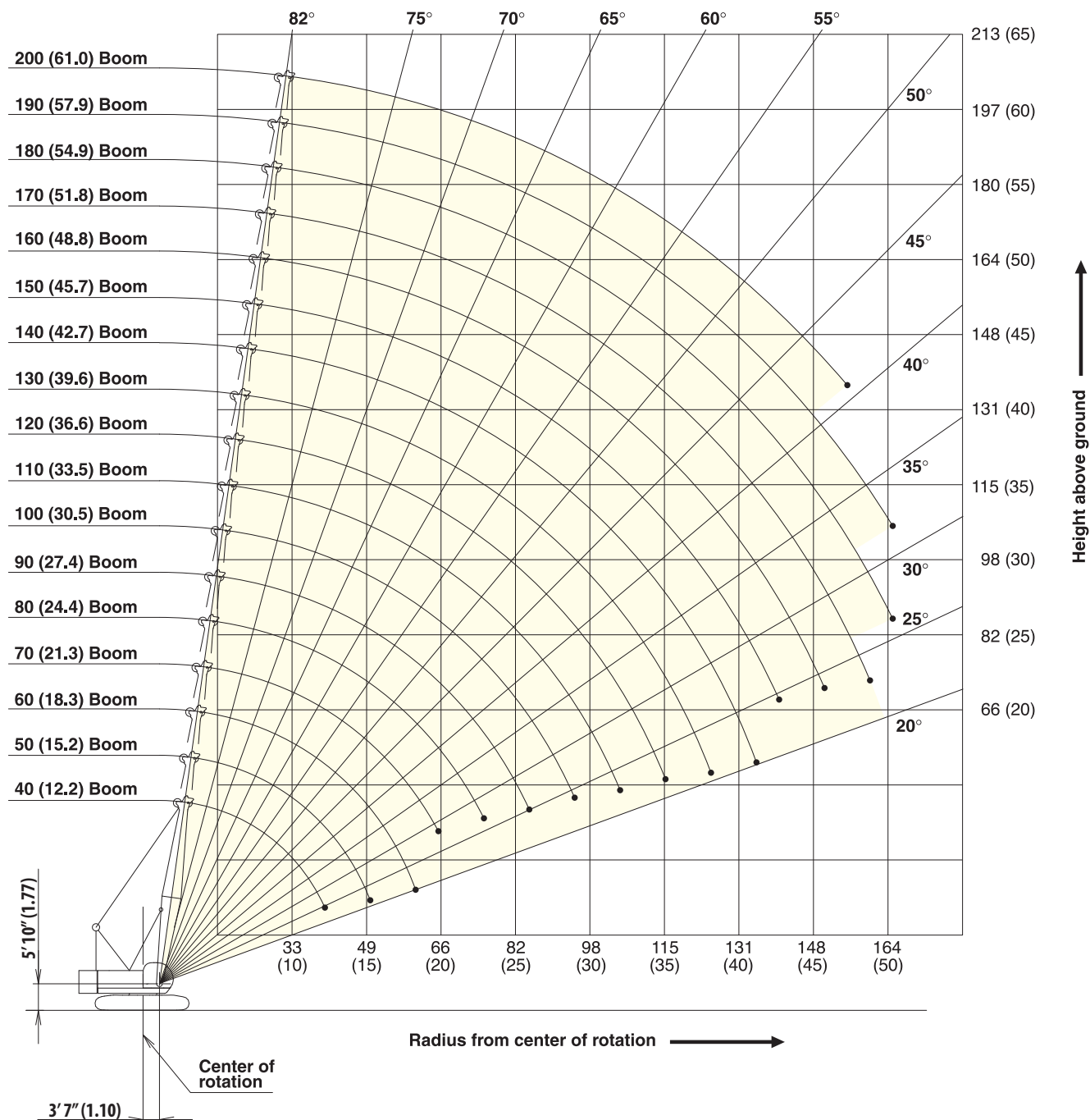


CK1100G SPECIFICATIONS

Working Ranges

Main Boom

Unit : ft (m)

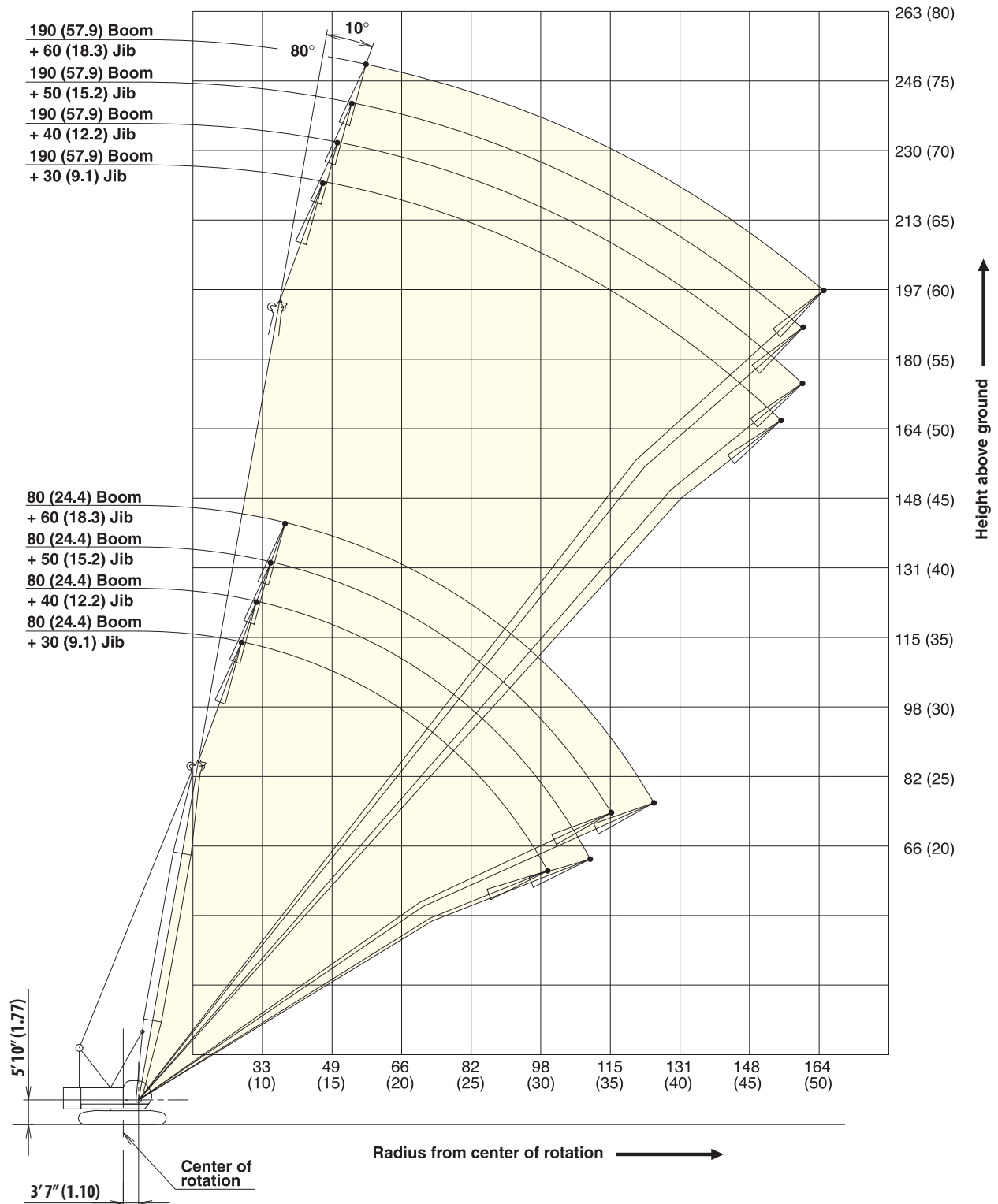


CK1100G SPECIFICATIONS

Working Ranges

Fixed Jib 10°

Unit : ft (m)



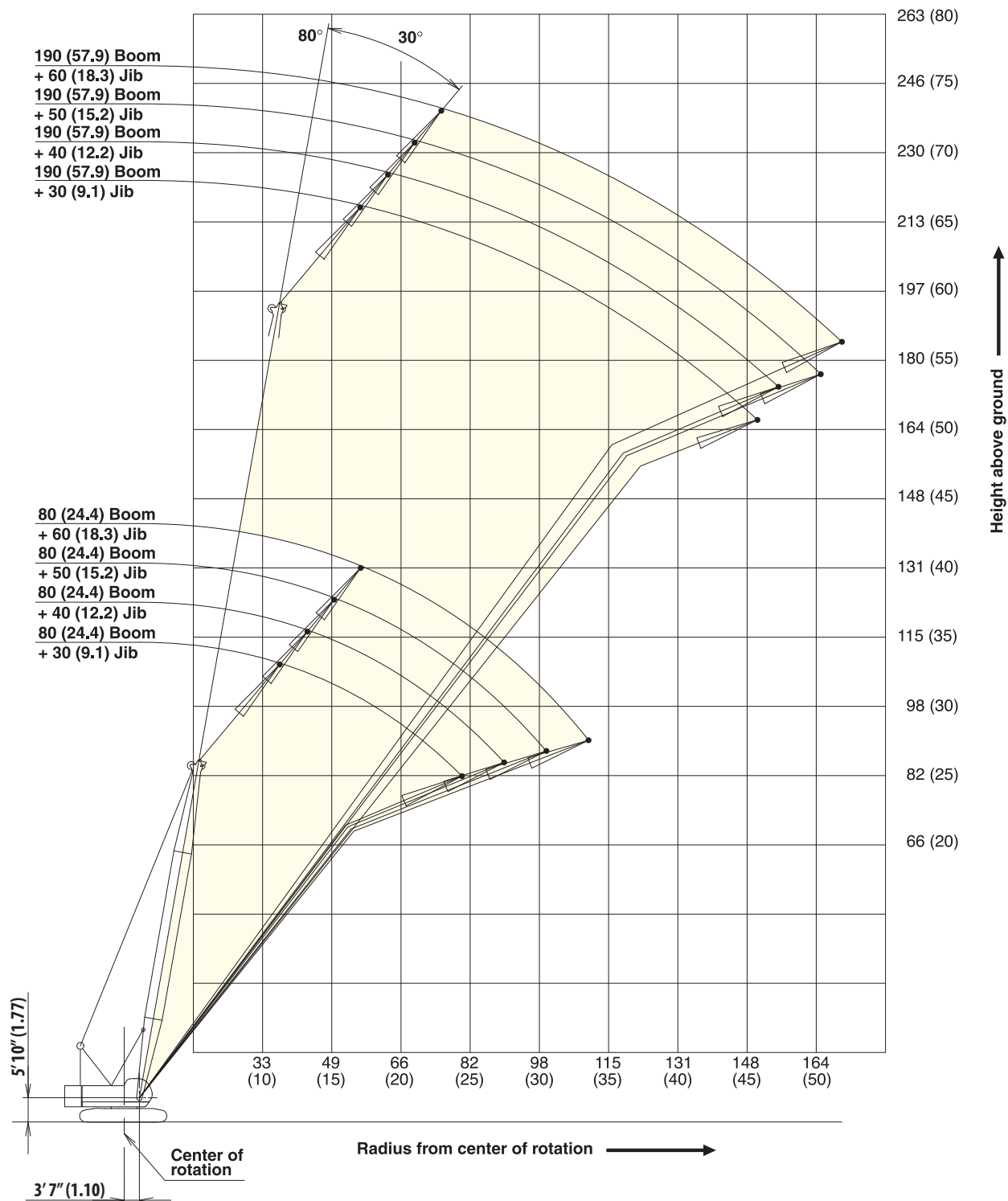


CK1100G SPECIFICATIONS

Working Ranges

Fixed Jib 30°

Unit : ft (m)



CK1100G

SPECIFICATIONS

Supplemental Data

- Rated loads included in the charts are the maximum allowable freely suspended loads at a given boom length, boom angle and load radius, and have been determined for the machine standing level on firm supporting surface under ideal operating conditions. The user must limit or de-rate rated loads to allow for adverse conditions (such as soft or uneven ground, out-of-level conditions, wind, side loads, pendulum action, jerking or sudden stopping of loads, inexperience of personnel, multiple machine lifts, and traveling with a load).
- Rated loads do not exceed 75% of minimum tipping loads. Rated loads based on factors other than machine stability such as structural competence are shown by asterisk * in the charts.
- The machine must be reeved and set-up as stated in the operation manual and all the instruction manuals if these manuals are missing, obtain replacements.
 - The crane must be leveled to within 1% on a firm supporting surface.
 - Boom backstops are required for all boom length.
 - Gantry must be fully raised position for all operations.
- Do not attempt to lift where no radius on load is listed as crane may tip or collapse.
- Attempting to lift more than rated loads may cause machine to tip or collapse. Do not tip machine to determine rated loads.
- Weight of hooks, hook blocks, slings and other lifting devices are a part of the total load. Their total weight must be subtracted from the rated load to obtain the weight that can be lifted.
- When lifting over boom point with jib or auxiliary sheave, rated loads for the boom must be deducted as shown below.

Jib Length	Aux Sheave	30 ft	40 ft	50 ft	60 ft
Deduct (lbs)	430	2,500	3,700	5,100	6,700

- The total load that can be lifted by jib is limited by rated jib loads.
- Boom lengths for jib mounting are 80 ft (24.4 m) to 190 ft (57.9 m)
- The total load that can be lifted by the auxiliary sheave is the value for 430 lbs deducted from rated load for the boom (without auxiliary sheave installed); however, the auxiliary sheave rated load should not exceed 24,000 lbs.

- Boom lengths that can attach auxiliary sheave are from 40 ft (12.2 m) to 190 ft (57.9 m).
- The boom should be erected over the front of the crawlers, not laterally. When lifting from or lowering to the ground the boom at length of 190 ft (57.9 m) with jib, the blocks for erections must be placed at the end of the crawlers.
- Least stable position is over the side.
- Maximum hoist load for number of reeving parts of line for hoist rope.

Maximum Load for Main Boom

No. of Parts of line	1	2	3	4	5
Maximum Loads (lbs)	25,200	50,400	75,600	100,800	126,000

No. of Parts of line	6	7	8
Maximum Loads (lbs)	151,200	176,400	220,000

Maximum Load for Fixed Jib

No. of Parts of line	1
Maximum Loads (lbs)	24,000

Maximum Load Auxiliary Sheave

No. of Parts of line	1
Maximum Loads (lbs)	24,000

- Rated loads listed apply only to the machine as originally manufactured and designed by KOBELCO CRANES CO., LTD. Modifications to this machine or use of equipment other than that specified can reduce operating capacity.
- Designed and rated to comply with ANSI Code B30.5.

CK1100G

SPECIFICATIONS

Main Boom Lift Capacity

Full Counterweight: 69,000 lbs Carbody Weight: 31,800

40' Boom			50' Boom			60' Boom			70' Boom			80' Boom		
Load Radius (ft)	Boom Angle (deg.)	360° Rated Load (lbs)	Load Radius (ft)	Boom Angle (deg.)	360° Rated Load (lbs)	Load Radius (ft)	Boom Angle (deg.)	360° Rated Load (lbs)	Load Radius (ft)	Boom Angle (deg.)	360° Rated Load (lbs)	Load Radius (ft)	Boom Angle (deg.)	360° Rated Load (lbs)
11.0	80.5	220,000 *	12.0	81.2	213,200 *	13.0	81.7	200,400 *	15.0	81.3	151,000 *	16.0	81.6	151,000 *
12.0	79.0	213,300 *	13.0	80.0	200,600 *	14.0	80.7	187,400 *	16.0	80.4	151,000 *	17.0	80.9	149,300 *
13.0	77.5	200,800 *	14.0	78.9	187,800 *	15.0	79.8	175,200 *	17.0	79.6	149,400 *	18.0	80.2	146,500 *
14.0	76.0	188,100 *	15.0	77.7	175,600 *	16.0	78.8	164,800 *	18.0	78.7	146,700 *	19.0	79.5	139,400 *
15.0	74.6	175,900 *	16.0	76.6	165,300 *	17.0	77.8	155,500 *	19.0	77.9	139,800 *	20.0	78.8	131,800
16.0	73.1	165,500 *	17.0	75.4	156,000 *	18.0	76.8	146,900 *	20.0	77.1	132,200	22.0	77.3	115,100
17.0	71.6	156,300 *	18.0	74.2	147,400 *	19.0	75.9	139,800 *	22.0	75.4	115,400	24.0	75.8	101,000
18.0	70.1	147,800 *	19.0	72.9	140,100 *	20.0	74.9	132,200	24.0	73.7	101,300	26.0	74.3	89,200
19.0	68.5	140,500 *	20.0	71.7	132,400	22.0	72.9	115,100	26.0	72.0	89,600	28.0	72.8	80,500
20.0	66.9	132,800	22.0	69.3	115,300	24.0	70.9	100,800	28.0	70.3	80,800	30.0	71.2	72,800
22.0	63.7	115,600	24.0	66.8	101,000	26.0	68.8	89,100	30.0	68.5	73,000	32.0	69.7	66,600
24.0	60.4	101,300	26.0	64.3	89,400	28.0	66.7	80,500	32.0	66.7	67,000	34.0	68.2	61,600
26.0	57.0	89,600	28.0	61.7	80,700	30.0	64.6	72,800	34.0	64.9	62,000	36.0	66.6	57,300
28.0	53.4	80,900	30.0	59.1	73,000	32.0	62.5	66,600	36.0	63.0	57,800	38.0	65.1	53,100
30.0	49.8	73,300	32.0	56.3	67,000	34.0	60.3	61,600	38.0	61.2	53,600	40.0	63.5	49,300
32.0	45.8	67,200	34.0	53.4	62,000	36.0	58.0	57,300	40.0	59.3	49,800	42.0	61.8	46,600
34.0	41.2	61,700	36.0	50.3	57,800	38.0	55.7	53,100	42.0	57.3	46,900	44.0	60.2	43,800
36.0	36.2	56,600	38.0	47.3	53,600	40.0	53.4	49,300	44.0	55.3	44,100	46.0	58.5	41,100
38.0	31.1	51,500	40.0	44.0	49,800	42.0	50.9	46,600	46.0	53.3	41,300	48.0	56.8	39,100
40.0	25.4	45,900 *	42.0	40.4	47,000	44.0	48.3	43,800	48.0	51.2	39,400	50.0	55.1	37,100
			44.0	36.7	44,300	46.0	45.8	41,100	50.0	49.0	37,400	55.0	50.5	32,700
			46.0	32.9	41,500	48.0	42.8	39,200	55.0	43.2	33,200	60.0	45.7	29,200
			48.0	27.6	38,300	50.0	39.9	37,200	60.0	36.9	29,600	65.0	40.4	26,300
			50.0	22.3	35,100	55.0	31.2	32,900	65.0	29.2	26,800	70.0	34.3	24,100
						60.0	20.7	28,600 *				75.0	26.9	22,100
Reeves		8	Reeves		8	Reeves		8	Reeves		6	Reeves		6
90' Boom			100' Boom			110' Boom			120' Boom			130' Boom		
Load Radius (ft)	Boom Angle (deg.)	360° Rated Load (lbs)	Load Radius (ft)	Boom Angle (deg.)	360° Rated Load (lbs)	Load Radius (ft)	Boom Angle (deg.)	360° Rated Load (lbs)	Load Radius (ft)	Boom Angle (deg.)	360° Rated Load (lbs)	Load Radius (ft)	Boom Angle (deg.)	360° Rated Load (lbs)
17.0	81.9	125,800 *	19.0	81.6	125,600 *	20.0	81.8	100,800 *	22.0	81.6	98,700 *	24.0	81.3	85,100 *
18.0	81.3	125,800 *	20.0	81.0	123,600 *	22.0	80.8	100,800 *	24.0	80.6	94,200 *	26.0	80.4	83,900 *
19.0	80.7	125,800 *	22.0	79.9	112,200 *	24.0	79.7	96,500 *	26.0	79.6	88,000 *	28.0	79.5	78,200 *
20.0	80.0	124,000 *	24.0	78.7	100,600	26.0	78.6	88,500 *	28.0	78.6	79,900	30.0	78.6	71,900
22.0	78.7	112,500 *	26.0	77.5	88,900	28.0	77.6	80,200	30.0	77.7	72,200	32.0	77.7	65,900
24.0	77.4	100,800	28.0	76.3	80,200	30.0	76.5	72,400	32.0	76.7	66,100	34.0	76.9	60,900
26.0	76.1	89,100	30.0	75.1	72,400	32.0	75.4	66,300	34.0	75.7	61,100	36.0	75.9	56,600
28.0	74.8	80,500	32.0	74.0	66,300	34.0	74.3	61,300	36.0	74.7	56,800	38.0	75.0	52,300
30.0	73.5	72,800	34.0	72.8	61,300	36.0	73.2	57,000	38.0	73.7	52,500	40.0	74.1	48,400
32.0	72.1	66,600	36.0	71.6	57,000	38.0	72.2	52,700	40.0	72.7	48,700	42.0	73.2	45,600
34.0	70.8	61,600	38.0	70.3	52,700	40.0	71.1	48,900	42.0	71.7	45,800	44.0	72.2	42,800
36.0	69.4	57,300	40.0	69.1	48,900	42.0	70.0	46,200	44.0	70.7	43,000	46.0	71.3	40,000
38.0	68.0	53,100	42.0	67.9	46,200	44.0	68.9	43,400	46.0	69.7	40,200	48.0	70.4	38,000
40.0	66.6	49,300	44.0	66.6	43,400	46.0	67.8	40,700	48.0	68.6	38,300	50.0	69.4	36,000
42.0	65.2	46,500	46.0	65.4	40,700	48.0	66.6	38,700	50.0	67.6	36,300	55.0	67.1	31,600
44.0	63.8	43,700	48.0	64.1	38,700	50.0	65.4	36,600	55.0	65.0	32,000	60.0	64.6	28,100
46.0	62.4	40,900	50.0	62.8	36,600	55.0	62.5	32,300	60.0	62.3	28,300	65.0	62.2	25,200
48.0	60.9	38,900	55.0	59.5	32,300	60.0	59.5	28,700	65.0	59.6	25,400	70.0	59.6	22,900
50.0	59.4	36,900	60.0	56.1	28,700	65.0	56.5	25,900	70.0	56.8	23,200	75.0	57.0	20,900
55.0	55.7	32,500	65.0	52.5	25,900	70.0	53.2	23,500	75.0	53.8	21,200	80.0	54.3	19,000
60.0	51.7	29,000	70.0	48.8	23,500	75.0	49.9	21,400	80.0	50.8	19,400	85.0	51.6	17,500
65.0	47.4	26,100	75.0	44.8	21,400	80.0	46.4	19,600	85.0	47.7	17,700	90.0	48.7	16,100
70.0	42.9	23,800	80.0	40.5	19,600	85.0	42.6	18,100	90.0	44.3	16,500	95.0	45.6	15,000
75.0	37.9	21,800	85.0	36.0	18,100	90.0	38.6	16,800	95.0	40.7	15,300	100.0	42.4	14,000
80.0	32.2	20,100	90.0	30.5	16,900	95.0	34.1	15,600	100.0	36.9	14,200	110.0	35.4	12,100
85.0	25.7	18,600	95.0	24.0	15,800	100.0	29.1	14,600	110.0	27.8	12,600	120.0	26.6	10,800
						105.0	23.2	13,770	115.0	22.2	11,840	125.0	21.3	10,230
Reeves		5	Reeves		5	Reeves		4	Reeves		4	Reeves		4

Note: Designed and rated to comply with ANSI Code B30.5
 Capacities based on factors other than machine stability such as structural competence are shown by asterisk * in the charts.
 Refer to notes on page 20.

CK1100G SPECIFICATIONS

Main Boom Lift Capacity

Full Counterweight: 69,000 lbs Carbody Weight: 31,800

140' Boom			150' Boom			160' Boom			170' Boom			180' Boom		
Load Radius (ft)	Boom Angle (deg.)	360° Rated Load (lbs)	Load Radius (ft)	Boom Angle (deg.)	360° Rated Load (lbs)	Load Radius (ft)	Boom Angle (deg.)	360° Rated Load (lbs)	Load Radius (ft)	Boom Angle (deg.)	360° Rated Load (lbs)	Load Radius (ft)	Boom Angle (deg.)	360° Rated Load (lbs)
24.0	81.9	72,900 *	26.0	81.7	62,200 *	28.0	81.5	50,200 *	30.0	81.3	44,500 *	30.0	81.8	39,300 *
26.0	81.1	71,800 *	28.0	80.9	61,300 *	30.0	80.8	50,100 *	32.0	80.7	43,900 *	32.0	81.2	38,800 *
28.0	80.3	70,800 *	30.0	80.1	60,400 *	32.0	80.1	49,700 *	34.0	80.0	43,200 *	34.0	80.5	38,200 *
30.0	79.4	69,000 *	32.0	79.4	59,400 *	34.0	79.4	49,200 *	36.0	79.3	42,500 *	36.0	79.9	37,600 *
32.0	78.6	64,700 *	34.0	78.6	57,200 *	36.0	78.6	48,500 *	38.0	78.6	41,900 *	38.0	79.2	37,000 *
34.0	77.8	60,500 *	36.0	77.8	54,100 *	38.0	77.9	47,800 *	40.0	77.9	41,200 *	40.0	78.6	36,400 *
36.0	76.9	56,200 *	38.0	77.0	51,000 *	40.0	77.2	46,600 *	42.0	77.2	40,600 *	42.0	77.9	35,800 *
38.0	76.1	52,000 *	40.0	76.3	48,000 *	42.0	76.4	44,300 *	44.0	76.5	40,000 *	44.0	77.2	35,100 *
40.0	75.2	48,200 *	42.0	75.5	45,200 *	44.0	75.6	42,100 *	46.0	75.8	39,300 *	46.0	76.6	34,500 *
42.0	74.4	45,400 *	44.0	74.7	42,400 *	46.0	74.9	39,800 *	48.0	75.1	37,400 *	48.0	75.9	33,900 *
44.0	73.5	42,600 *	46.0	73.9	39,600 *	48.0	74.1	37,800 *	50.0	74.4	35,400 *	50.0	75.3	33,300 *
46.0	72.7	39,800 *	48.0	73.1	37,500 *	50.0	73.4	35,800 *	55.0	72.6	31,200 *	55.0	73.7	30,800 *
48.0	71.8	37,800 *	50.0	72.3	35,500 *	55.0	71.5	31,400 *	60.0	70.9	27,600 *	60.0	72.0	27,400 *
50.0	71.0	35,800 *	55.0	70.3	31,200 *	60.0	69.6	27,800 *	65.0	69.1	24,600 *	65.0	70.3	24,400 *
55.0	68.8	31,400 *	60.0	68.2	27,600 *	65.0	67.7	25,000 *	70.0	67.3	22,300 *	70.0	68.6	21,900 *
60.0	66.6	27,800 *	65.0	66.2	24,800 *	70.0	65.8	22,600 *	75.0	65.4	20,300 *	75.0	66.9	19,900 *
65.0	64.3	25,000 *	70.0	64.0	22,400 *	75.0	63.8	20,500 *	80.0	63.5	18,500 *	80.0	65.2	18,100 *
70.0	62.0	22,600 *	75.0	61.9	20,300 *	80.0	61.8	18,700 *	85.0	61.6	16,800 *	85.0	63.4	16,600 *
75.0	59.7	20,500 *	80.0	59.6	18,500 *	85.0	59.7	17,000 *	90.0	59.7	15,400 *	90.0	61.6	15,200 *
80.0	57.3	18,700 *	85.0	57.4	17,000 *	90.0	57.6	15,700 *	95.0	57.8	14,300 *	95.0	59.8	14,000 *
85.0	54.8	17,200 *	90.0	55.2	15,700 *	95.0	55.4	14,500 *	100.0	55.8	13,300 *	100.0	57.9	12,900 *
90.0	52.2	15,900 *	95.0	52.8	14,400 *	100.0	53.2	13,500 *	110.0	51.5	11,500 *	110.0	54.0	11,100 *
95.0	49.5	14,600 *	100.0	50.3	13,400 *	110.0	48.6	11,700 *	120.0	47.0	9,800 *	120.0	49.9	9,600 *
100.0	46.8	13,600 *	110.0	45.1	11,700 *	120.0	43.6	10,100 *	130.0	42.2	8,700 *	130.0	45.6	8,500 *
110.0	40.8	11,900 *	120.0	39.3	10,300 *	130.0	38.1	8,900 *	140.0	36.8	7,700 *	140.0	40.9	7,400 *
120.0	34.0	10,300 *	130.0	32.8	8,900 *	140.0	31.6	7,900 *	150.0	30.5	6,800 *	150.0	35.7	6,500 *
130.0	25.7	9,200 *	140.0	24.3	8,000 *	150.0	23.7	7,100 *	160.0	23.2	5,900 *	160.0	29.7	5,600 *
135.0	20.5	8,830 *										165.0	26.5	5,100 *
Reeves		4	Reeves		4	Reeves		2	Reeves		2	Reeves		2
190' Boom			200' Boom											
Load Radius (ft)	Boom Angle (deg.)	360° Rated Load (lbs)	Load Radius (ft)	Boom Angle (deg.)	360° Rated Load (lbs)									
32.0	81.6	34,400 *	34.0	81.5	30,300 *									
34.0	81.0	33,800 *	36.0	80.9	29,700 *									
36.0	80.4	33,300 *	38.0	80.3	29,200 *									
38.0	79.8	32,700 *	40.0	79.7	28,700 *									
40.0	79.2	32,200 *	42.0	79.1	28,200 *									
42.0	78.6	31,700 *	44.0	78.6	27,700 *									
44.0	78.0	31,100 *	46.0	78.0	27,300 *									
46.0	77.4	30,600 *	48.0	77.4	26,800 *									
48.0	76.7	30,100 *	50.0	76.8	26,300 *									
50.0	76.1	29,600 *	55.0	75.3	24,900 *									
55.0	74.5	28,100 *	60.0	73.8	23,200 *									
60.0	73.0	26,200 *	65.0	72.4	21,500 *									
65.0	71.4	24,000 *	70.0	70.9	20,000 *									
70.0	69.8	21,800 *	75.0	69.3	18,500 *									
75.0	68.2	19,900 *	80.0	67.8	17,100 *									
80.0	66.5	18,000 *	85.0	66.2	15,900 *									
85.0	64.9	16,400 *	90.0	64.6	14,700 *									
90.0	63.2	15,000 *	95.0	63.0	13,500 *									
95.0	61.5	13,900 *	100.0	61.4	12,400 *									
100.0	59.7	12,900 *	110.0	58.1	10,600 *									
110.0	56.2	11,000 *	120.0	54.6	9,200 *									
120.0	52.5	9,400 *	130.0	51.1	7,800 *									
130.0	48.5	8,200 *	140.0	47.2	6,500 *									
140.0	44.3	7,200 *	150.0	43.1	5,200 *									
150.0	39.7	6,300 *	155.0	41.0	4,650 *									
160.0	34.8	5,300 *												
165.0	32.1	4,650 *												
Reeves		2	Reeves		2									

Note: Designed and rated to comply with ANSI Code B30.5
Capacities based on factors other than machine stability such as structural competence are shown by asterisk * in the charts.
Refer to notes on page 20.



CK1100G SPECIFICATIONS

Fixed Jib Lift Capacity

Full Counterweight: 69,000 lbs Carbody Weight: 31,800

80' Boom																							
30 ft Jib						40 ft Jib						50 ft Jib						60 ft Jib					
Offset Angle (deg.)						Offset Angle (deg.)						Offset Angle (deg.)						Offset Angle (deg.)					
10			30			10			30			10			30			10			30		
Load Radius (ft)	Boom Angle (deg.)	Rated Load (lbs)	Load Radius (ft)	Boom Angle (deg.)	Rated Load (lbs)	Load Radius (ft)	Boom Angle (deg.)	Rated Load (lbs)	Load Radius (ft)	Boom Angle (deg.)	Rated Load (lbs)	Load Radius (ft)	Boom Angle (deg.)	Rated Load (lbs)	Load Radius (ft)	Boom Angle (deg.)	Rated Load (lbs)	Load Radius (ft)	Boom Angle (deg.)	Rated Load (lbs)	Load Radius (ft)	Boom Angle (deg.)	Rated Load (lbs)
30.0	79.3	24,000*				34.0	79.3	24,000*				38.0	79.3	20,000*				40.0	79.8	18,000*			
32.0	78.0	24,000*				36.0	78.3	24,000*				40.0	78.4	20,000*				45.0	77.7	18,000*			
34.0	77.0	24,000*				38.0	77.4	24,000*				45.0	76.1	20,000*				50.0	75.6	17,850*			
36.0	75.9	24,000*				40.0	76.4	24,000*				50.0	73.8	20,000*				55.0	73.3	16,180*			
38.0	74.9	24,000*	38.0	79.6	21,000*	45.0	73.9	24,000*	45.0	79.7	15,360*	55.0	71.3	18,560*	55.0	78.0	11,080*	60.0	71.2	14,850*	60.0	78.7	8,950*
40.0	73.8	24,000*	40.0	78.5	21,000*	50.0	71.4	24,000*	50.0	77.1	14,480*	60.0	68.9	17,080*	60.0	75.5	10,490*	65.0	69.0	13,730*	65.0	76.4	8,480*
45.0	71.1	24,000*	45.0	75.7	20,700*	55.0	68.7	22,480*	55.0	74.3	13,640*	65.0	66.5	15,800*	65.0	73.0	9,980*	70.0	66.7	12,760*	70.0	74.1	8,060*
50.0	68.3	24,000*	50.0	72.8	19,510*	60.0	66.1	20,700*	60.0	71.6	12,980*	70.0	64.0	14,720*	70.0	70.4	9,540*	75.0	64.3	11,860*	75.0	71.5	7,670*
55.0	65.3	24,000*	55.0	69.7	18,380*	65.0	63.4	19,180*	65.0	68.8	12,360*	75.0	61.3	13,710*	75.0	67.6	9,100*	80.0	61.9	11,130*	80.0	69.0	7,340*
60.0	62.4	24,000*	60.0	66.7	17,500*	70.0	60.6	17,870*	70.0	65.9	11,830*	80.0	58.7	12,870*	80.0	64.8	8,730*	85.0	59.5	10,470*	85.0	66.5	7,030*
65.0	59.3	22,920	65.0	63.6	16,710*	75.0	57.6	16,660*	75.0	62.7	11,350*	85.0	56.0	12,140*	85.0	62.0	8,420*	90.0	57.0	9,870*	90.0	63.9	6,760*
70.0	56.2	20,810	70.0	60.3	16,020*	80.0	54.6	15,670*	80.0	59.6	10,930*	90.0	53.2	11,500*	90.0	59.0	8,130*	95.0	54.2	9,320*	95.0	60.9	6,500*
75.0	52.8	18,910	75.0	56.7	15,380*	85.0	51.5	14,810*	85.0	56.3	10,560*	95.0	50.0	10,890*	95.0	55.6	7,840*	100.0	51.5	8,860*	100.0	58.1	6,280*
80.0	49.3	17,370	80.0	53.1	14,850*	90.0	48.3	14,040*	90.0	52.9	10,250*	100.0	46.9	10,360*	100.0	52.3	7,620*	105.0	48.7	8,440*	105.0	55.0	6,100*
85.0	45.7	16,020				95.0	44.6	13,310*				105.0	43.6	9,890*				110.0	45.7	8,060*	110.0	51.8	5,930*
90.0	41.8	14,850				100.0	40.8	12,690*				110.0	40.0	9,470*				115.0	42.3	7,690*			
95.0	37.2	13,750				105.0	36.7	12,120				115.0	35.8	9,080*				120.0	38.8	7,380*			
100.0	32.4	12,830				110.0	32.1	11,350*										125.0	35.1	7,120*			
Reeves	1		Reeves	1		Reeves	1		Reeves	1		Reeves	1		Reeves	1		Reeves	1		Reeves	1	

90' Boom																							
30 ft Jib						40 ft Jib						50 ft Jib						60 ft Jib					
Offset Angle (deg.)						Offset Angle (deg.)						Offset Angle (deg.)						Offset Angle (deg.)					
10			30			10			30			10			30			10			30		
Load Radius (ft)	Boom Angle (deg.)	Rated Load (lbs)	Load Radius (ft)	Boom Angle (deg.)	Rated Load (lbs)	Load Radius (ft)	Boom Angle (deg.)	Rated Load (lbs)	Load Radius (ft)	Boom Angle (deg.)	Rated Load (lbs)	Load Radius (ft)	Boom Angle (deg.)	Rated Load (lbs)	Load Radius (ft)	Boom Angle (deg.)	Rated Load (lbs)	Load Radius (ft)	Boom Angle (deg.)	Rated Load (lbs)	Load Radius (ft)	Boom Angle (deg.)	Rated Load (lbs)
32.0	79.1	24,000*				36.0	79.3	24,000*				38.0	80.0	20,000*				45.0	78.6	18,000*			
34.0	78.1	24,000*				38.0	78.4	24,000*				40.0	79.2	20,000*				50.0	76.6	18,000*			
36.0	77.1	24,000*				40.0	77.5	24,000*				45.0	77.1	20,000*				55.0	74.5	16,970*			
38.0	76.2	24,000*				45.0	75.2	24,000*				50.0	75.0	20,000*				60.0	72.5	15,630*	60.0	79.5	9,100*
40.0	75.2	24,000*	40.0	79.5	21,000*	50.0	72.9	24,000*	50.0	78.2	14,810*	55.0	72.7	19,550*	55.0	78.9	11,300*	65.0	70.5	14,460*	65.0	77.4	8,660*
45.0	72.7	24,000*	45.0	77.0	21,000*	55.0	70.4	23,890*	55.0	75.6	14,020*	60.0	70.5	18,000*	60.0	76.7	10,730*	70.0	68.4	13,470*	70.0	75.3	8,240*
50.0	70.2	24,000*	50.0	74.4	20,100*	60.0	68.1	22,020*	60.0	73.2	13,330*	65.0	68.3	16,730*	65.0	74.4	10,250*	75.0	66.1	12,520*	75.0	72.9	7,870*
55.0	67.5	24,000*	55.0	71.6	19,020*	65.0	65.6	20,410*	65.0	70.7	12,760*	70.0	66.1	15,580*	70.0	72.0	9,780*	80.0	64.0	11,770*	80.0	70.7	7,530*
60.0	64.9	24,000*	60.0	68.9	18,120*	70.0	63.2	19,040*	70.0	68.1	12,230*	75.0	63.6	14,520*	75.0	69.5	9,360*	85.0	61.8	11,080*	85.0	68.4	7,230*
65.0	62.2	22,660	65.0	66.1	17,320*	75.0	60.4	17,760*	75.0	65.3	11,720*	80.0	61.3	13,660*	80.0	67.0	8,990*	90.0	59.5	10,470*	90.0	66.0	6,960*
70.0	59.4	20,540	70.0	63.3	16,620*	80.0	57.8	16,730*	80.0	62.5	11,300*	85.0	58.8	12,890*	85.0	64.5	8,680*	95.0	57.1	9,890*	95.0	63.4	6,700*
75.0	56.4	18,620	75.0	60.2	15,960*	85.0	55.1	15,800*	85.0	59.7	10,930*	90.0	56.3	12,210*	90.0	61.8	8,370*	100.0	54.7	9,390*	100.0	60.9	6,480*
80.0	53.5	17,080	80.0	57.1	15,430*	90.0	52.3	14,740	90.0	56.7	10,580*	95.0	53.6	11,570*	95.0	58.9	8,110*	105.0	52.2	8,950*	105.0	58.3	6,280*
85.0	50.4	15,760	85.0	53.9	14,940*	95.0	49.1	13,620	95.0	53.4	10,270*	100.0	50.9	11,020*	100.0	56.1	7,870*	110.0	49.6	8,550*	110.0	55.5	6,100*
90.0	47.1	14,570				100.0	46.0	12,690				105.0	48.0	10,530*	105.0	53.1	7,640*	115.0	46.7	8,150*	115.0	52.4	5,930*
95.0	43.4	13,470				105.0	42.7	11,860				110.0	45.1	10,070*				120.0	43.8	7,820*			
100.0	39.7	12,540				110.0	39.1	11,080				115.0	41.7	9,650*				125.0	40.7	7,530*			
105.0	35.6	11,700				115.0	35.0	10,360				120.0	38.2	9,300*				130.0	37.4	7,270*			
												125.0	34.4	8,970*				135.0	33.8	7,010*			
Reeves	1		Reeves	1		Reeves	1		Reeves	1		Reeves	1		Reeves	1		Reeves	1		Reeves	1	

Note: Designed and rated to comply with ANSI Code B30.5
Capacities based on factors other than machine stability such as structural competence are shown by asterisk * in the charts.
Refer to notes on page 20.

CK1100G

SPECIFICATIONS

Fixed Jib Lift Capacity

Full Counterweight: 69,000 lbs

Carbody Weight: 31,800

100' Boom																							
30 ft Jib						40 ft Jib						50 ft Jib						60 ft Jib					
O set Angle (deg.)						O set Angle (deg.)						O set Angle (deg.)						O set Angle (deg.)					
10			30			10			30			10			30			10			30		
Load Radius (ft)	Boom Angle (deg.)	Rated Load (lbs)	Load Radius (ft)	Boom Angle (deg.)	Rated Load (lbs)	Load Radius (ft)	Boom Angle (deg.)	Rated Load (lbs)	Load Radius (ft)	Boom Angle (deg.)	Rated Load (lbs)	Load Radius (ft)	Boom Angle (deg.)	Rated Load (lbs)	Load Radius (ft)	Boom Angle (deg.)	Rated Load (lbs)	Load Radius (ft)	Boom Angle (deg.)	Rated Load (lbs)	Load Radius (ft)	Boom Angle (deg.)	Rated Load (lbs)
32.0	79.9	24,000*				36.0	80.0	24,000*				40.0	79.9	20,000*				45.0	79.3	18,000*			
34.0	79.0	24,000*				38.0	79.2	24,000*				45.0	78.0	20,000*				50.0	77.5	18,000*			
36.0	78.1	24,000*				40.0	78.4	24,000*				50.0	76.0	20,000*				55.0	75.5	17,720*			
38.0	77.2	24,000*				45.0	76.3	24,000*				55.0	73.9	20,000*	55.0	79.7	11,500*	60.0	73.7	16,350*			
40.0	76.4	24,000*				50.0	74.2	24,000*	50.0	79.1	15,100*	60.0	71.9	18,930*	60.0	77.7	10,950*	65.0	71.8	15,160*	65.0	78.3	8,810
45.0	74.1	24,000*	45.0	78.0	21,000*	55.0	71.9	24,000*	55.0	76.7	14,320*	65.0	69.9	17,590*	65.0	75.5	10,470*	70.0	69.9	14,130*	70.0	76.3	8,420*
50.0	71.8	24,000*	50.0	75.7	20,650*	60.0	69.7	23,280*	60.0	74.5	13,660*	70.0	67.8	16,420*	70.0	73.4	10,030*	75.0	67.8	13,160*	75.0	74.2	8,040*
55.0	69.3	24,000*	55.0	73.2	19,570*	65.0	67.5	21,620*	65.0	72.2	13,090*	75.0	65.6	15,340*	75.0	71.1	9,610*	80.0	65.8	12,360*	80.0	72.1	7,710*
60.0	67.0	24,000*	60.0	70.7	18,690*	70.0	65.3	20,190*	70.0	69.9	12,560*	80.0	63.4	14,440*	80.0	68.8	9,230*	85.0	63.8	11,660*	85.0	70.0	7,420*
65.0	64.5	22,440	65.0	68.2	17,900*	75.0	62.8	18,620	75.0	67.3	12,050*	85.0	61.2	13,640*	85.0	66.5	8,920*	90.0	61.7	11,040*	90.0	67.9	7,160*
70.0	62.1	20,320	70.0	65.7	17,190*	80.0	60.4	17,060	80.0	64.9	11,640*	90.0	59.0	12,910*	90.0	64.2	8,610*	95.0	59.5	10,420*	95.0	65.5	6,900*
75.0	59.4	18,400	75.0	62.9	16,510*	85.0	58.0	15,710	85.0	62.4	11,260*	95.0	56.5	12,230*	95.0	61.6	8,330*	100.0	57.3	9,920*	100.0	63.2	6,670*
80.0	56.7	16,860	80.0	60.2	15,960*	90.0	55.5	14,500	90.0	59.8	10,910*	100.0	54.1	11,660*	100.0	59.1	8,090*	105.0	55.1	9,450*	105.0	60.9	6,450*
85.0	54.0	15,520	85.0	57.4	15,450*	95.0	52.8	13,380	95.0	56.9	10,580*	105.0	51.6	11,150*	105.0	56.4	7,870*	110.0	52.7	9,030*	110.0	58.4	6,280*
90.0	51.2	14,320	90.0	54.5	14,570	100.0	50.1	12,450	100.0	54.0	10,310*	110.0	49.0	10,670*	110.0	53.7	7,690*	115.0	50.2	8,610*	115.0	55.7	6,100*
95.0	48.1	13,220	95.0	51.2	13,420	105.0	47.2	11,590				115.0	46.1	10,200*				120.0	47.7	8,280*	120.0	53.1	5,950*
100.0	45.0	12,270				110.0	44.3	10,840				120.0	43.2	9,590				125.0	45.1	7,950*			
105.0	41.7	11,460				115.0	40.9	10,110				125.0	40.2	9,010				130.0	42.3	7,670*			
110.0	38.1	10,690				120.0	37.4	9,470				130.0	36.8	8,480				135.0	39.4	7,400*			
115.0	34.0	9,980				125.0	33.7	8,860*				135.0	33.2	7,800*				140.0	35.9	7,140*			
																		145.0	32.4	6,810*			
Reeves	1		Reeves	1		Reeves	1		Reeves	1		Reeves	1		Reeves	1		Reeves	1		Reeves	1	

110' Boom																							
30 ft Jib						40 ft Jib						50 ft Jib						60 ft Jib					
O set Angle (deg.)						O set Angle (deg.)						O set Angle (deg.)						O set Angle (deg.)					
10			30			10			30			10			30			10			30		
Load Radius (ft)	Boom Angle (deg.)	Rated Load (lbs)	Load Radius (ft)	Boom Angle (deg.)	Rated Load (lbs)	Load Radius (ft)	Boom Angle (deg.)	Rated Load (lbs)	Load Radius (ft)	Boom Angle (deg.)	Rated Load (lbs)	Load Radius (ft)	Boom Angle (deg.)	Rated Load (lbs)	Load Radius (ft)	Boom Angle (deg.)	Rated Load (lbs)	Load Radius (ft)	Boom Angle (deg.)	Rated Load (lbs)	Load Radius (ft)	Boom Angle (deg.)	Rated Load (lbs)
34.0	79.8	24,000*				38.0	79.9	24,000*				45.0	78.8	20,000*				45.0	80.0	18,000*			
36.0	79.0	24,000*				40.0	79.2	24,000*				50.0	76.9	20,000*				50.0	78.3	18,000*			
38.0	78.2	24,000*				45.0	77.2	24,000*				55.0	75.0	20,000*				55.0	76.4	18,000*			
40.0	77.3	24,000*				50.0	75.3	24,000*	50.0	79.9	15,360*	60.0	73.1	19,810*	60.0	78.5	11,150*	60.0	74.7	17,040*			
45.0	75.3	24,000*	45.0	79.0	21,000*	55.0	73.2	24,000*	55.0	77.7	14,610*	65.0	71.2	18,430*	65.0	76.5	10,670*	65.0	72.9	15,820*	65.0	79.1	8,970*
50.0	73.2	24,000*	50.0	76.8	21,000*	60.0	71.2	24,000*	60.0	75.6	13,970*	70.0	69.3	17,230*	70.0	74.6	10,250*	70.0	71.1	14,770*	70.0	77.2	8,570*
55.0	70.9	24,000*	55.0	74.5	20,100*	65.0	69.1	22,500	65.0	73.5	13,400*	75.0	67.2	16,110*	75.0	72.4	9,830*	75.0	69.2	13,800*	75.0	75.2	8,200*
60.0	68.7	24,000*	60.0	72.2	19,220*	70.0	67.1	20,370	70.0	71.4	12,870*	80.0	65.2	15,160*	80.0	70.4	9,470*	80.0	67.3	12,960*	80.0	73.3	7,890*
65.0	66.5	22,260	65.0	70.0	18,430*	75.0	64.8	18,450	75.0	69.1	12,380*	85.0	63.2	14,350*	85.0	68.3	9,140*	85.0	65.5	12,230*	85.0	71.4	7,580*
70.0	64.3	20,150	70.0	67.7	17,700*	80.0	62.7	16,880	80.0	66.9	11,940*	90.0	61.2	13,600*	90.0	66.1	8,840*	90.0	63.6	11,590*	90.0	69.4	7,310*
75.0	61.8	18,230	75.0	65.1	17,040*	85.0	60.5	15,520	85.0	64.6	11,570*	95.0	58.9	12,890*	95.0	63.8	8,550*	95.0	61.5	10,950*	95.0	67.2	7,050*
80.0	59.4	16,680	80.0	62.7	16,460*	90.0	58.2	14,320	90.0	62.2	11,220*	100.0	56.7	12,300*	100.0	61.5	8,310*	100.0	59.5	10,420*	100.0	65.2	6,830*
85.0	57.0	15,340	85.0	60.2	15,650	95.0	55.7	13,200	95.0	59.7	10,890*	105.0	54.5	11,530	105.0	59.2	8,090*	105.0	57.5	9,940*	105.0	63.0	6,630*
90.0	54.5	14,150	90.0	57.6	14,440	100.0	53.3	12,250	100.0	57.1	10,600*	110.0	52.2	10,780	110.0	56.7	7,890*	110.0	55.4	9,500*	110.0	60.8	6,430*
95.0	51.8	13,020	95.0	54.8	13,270	105.0	50.8	11,410	105.0	54.5	10,330*	115.0	49.6	10,030	115.0	54.0	7,690*	115.0	53.1	9,080*	115.0	58.4	6,260*
100.0	49.1	12,100	100.0	52.0	12,320	110.0	48.2	10,640	110.0	51.8	10,110*	120.0	47.1	9,390				120.0	50.9	8,700*	120.0	56.1	6,100*
105.0	46.3	11,260				115.0	45.3	9,920				125.0	44.5	8,810				125.0	48.6	8,370*	125.0	53.6	5,970*
110.0	43.3	10,510				120.0	42.5	9,300				130.0	41.8	8,280				130.0	46.2	8,060*			
115.0	39.9	9,780				125.0	39.4	8,730				135.0	38.8	7,800				135.0	43.6	7,780*			
120.0	36.5	9,170				130.0	36.1	8,200				140.0	35.4	7,250*				140.0	40.8	7,380			
125.0	32.7	8,420*				135.0	32.5	7,420*										145.0	37.9	6,960			
																		150.0	34.8	6,370*			
Reeves	1		Reeves	1		Reeves	1		Reeves	1		Reeves	1		Reeves	1		Reeves	1		Reeves	1	

Note: Designed and rated to comply with ANSI Code B30.5

Capacities based on factors other than machine stability such as structural competence are shown by asterisk * in the charts.

Refer to notes on page 20.

CK1100G SPECIFICATIONS

Fixed Jib Lift Capacity

Full Counterweight: 69,000 lbs

Carbody Weight: 31,800

120' Boom																							
30 ft Jib						40 ft Jib						50 ft Jib						60 ft Jib					
O set Angle (deg.)						O set Angle (deg.)						O set Angle (deg.)						O set Angle (deg.)					
10			30			10			30			10			30			10			30		
Load Radius (ft)	Boom Angle (deg.)	Rated Load (lbs)	Load Radius (ft)	Boom Angle (deg.)	Rated Load (lbs)	Load Radius (ft)	Boom Angle (deg.)	Rated Load (lbs)	Load Radius (ft)	Boom Angle (deg.)	Rated Load (lbs)	Load Radius (ft)	Boom Angle (deg.)	Rated Load (lbs)	Load Radius (ft)	Boom Angle (deg.)	Rated Load (lbs)	Load Radius (ft)	Boom Angle (deg.)	Rated Load (lbs)	Load Radius (ft)	Boom Angle (deg.)	Rated Load (lbs)
36.0	79.7	24,000*				40.0	79.9	24,000*				45.0	79.5	20,000*				50.0	78.9	18,000*			
38.0	79.0	24,000*				45.0	78.1	24,000*				50.0	77.7	20,000*				55.0	77.7	18,000*			
40.0	78.2	24,000*				50.0	76.2	24,000*				55.0	75.9	20,000*				60.0	75.5	17,720*			
45.0	76.3	24,000*	45.0	79.7	21,000*	55.0	74.3	24,000*	55.0	78.5	14,880*	60.0	74.2	20,000*	60.0	79.2	11,330*	65.0	73.9	16,460*	65.0	79.7	9,080*
50.0	74.3	24,000*	50.0	77.7	21,000*	60.0	72.4	24,000*	60.0	76.6	14,240*	65.0	72.4	19,240*	65.0	77.4	10,860*	70.0	72.2	15,380*	70.0	78.0	8,700*
55.0	72.2	24,000*	55.0	75.6	20,560*	65.0	70.5	22,240	65.0	74.7	13,690*	70.0	70.6	18,010*	70.0	75.6	10,420*	75.0	70.4	14,390*	75.0	76.1	8,350*
60.0	70.2	24,000*	60.0	73.5	19,680*	70.0	68.6	20,100	70.0	72.7	13,160*	75.0	68.7	16,840*	75.0	73.6	10,030*	80.0	68.7	13,550*	80.0	74.4	8,040*
65.0	68.2	21,970	65.0	71.4	18,910*	75.0	66.5	18,160	75.0	70.6	12,670*	80.0	66.8	15,890*	80.0	71.7	9,670*	85.0	67.0	12,780*	85.0	72.6	7,730*
70.0	66.1	19,860	70.0	69.3	18,180*	80.0	64.5	16,620	80.0	68.5	12,250*	85.0	65.0	15,030*	85.0	69.7	9,340*	90.0	65.2	12,120*	90.0	70.7	7,470*
75.0	63.9	17,940	75.0	67.0	17,500*	85.0	62.5	15,250	85.0	66.4	11,860*	90.0	63.1	14,190	90.0	67.8	9,060*	95.0	63.3	11,480*	95.0	68.7	7,230*
80.0	61.7	16,400	80.0	64.8	16,790	90.0	60.5	14,040	90.0	64.3	11,500*	95.0	61.0	13,050	95.0	65.6	8,770*	100.0	61.5	10,930*	100.0	66.8	7,010*
85.0	59.5	15,050	85.0	62.6	15,410	95.0	58.2	12,910	95.0	62.0	11,170*	100.0	59.0	12,100	100.0	63.6	8,500*	105.0	59.6	10,420*	105.0	64.9	6,790*
90.0	57.3	13,860	90.0	60.2	14,170	100.0	56.0	11,970	100.0	59.7	10,860*	105.0	57.0	11,260	105.0	61.4	8,280*	110.0	57.7	9,960*	110.0	62.9	6,610*
95.0	54.8	12,740	95.0	57.7	13,020	105.0	53.8	11,130	105.0	57.4	10,600*	110.0	54.9	10,490	110.0	59.3	8,060*	115.0	55.6	9,520*	115.0	60.7	6,410*
100.0	52.4	11,790	100.0	55.2	12,050	110.0	51.5	10,360	110.0	55.0	10,360*	115.0	52.6	9,740	115.0	56.8	7,870*	120.0	53.6	9,140*	120.0	58.6	6,260*
105.0	49.9	10,950	105.0	52.6	11,170	115.0	48.9	9,630	115.0	52.3	9,870	120.0	50.4	9,100	120.0	54.5	7,690*	125.0	51.5	8,610	125.0	56.4	6,100*
110.0	47.3	10,200				120.0	46.5	8,990				125.0	48.1	8,530	125.0	52.1	7,530*	130.0	49.3	8,060	130.0	54.1	5,970*
115.0	44.4	9,470				125.0	43.8	8,420				130.0	45.6	8,000				135.0	47.1	7,580	135.0	51.7	5,860*
120.0	41.6	8,860				130.0	41.1	7,890				135.0	43.1	7,510				140.0	44.6	7,090			
125.0	38.5	8,280				135.0	38.1	7,420				140.0	40.3	7,030				145.0	42.2	6,670			
130.0	35.2	7,690*				140.0	34.7	6,700*				145.0	37.4	6,540*				150.0	39.6	6,300			
135.0	31.6	6,830*										150.0	34.3	5,880*				155.0	36.8	5,730*			
																		160.0	33.6	5,090*			
Reeves	1		Reeves	1		Reeves	1		Reeves	1		Reeves	1		Reeves	1		Reeves	1		Reeves	1	
130' Boom																							
30 ft Jib						40 ft Jib						50 ft Jib						60 ft Jib					
O set Angle (deg.)						O set Angle (deg.)						O set Angle (deg.)						O set Angle (deg.)					
10			30			10			30			10			30			10			30		
Load Radius (ft)	Boom Angle (deg.)	Rated Load (lbs)	Load Radius (ft)	Boom Angle (deg.)	Rated Load (lbs)	Load Radius (ft)	Boom Angle (deg.)	Rated Load (lbs)	Load Radius (ft)	Boom Angle (deg.)	Rated Load (lbs)	Load Radius (ft)	Boom Angle (deg.)	Rated Load (lbs)	Load Radius (ft)	Boom Angle (deg.)	Rated Load (lbs)	Load Radius (ft)	Boom Angle (deg.)	Rated Load (lbs)	Load Radius (ft)	Boom Angle (deg.)	Rated Load (lbs)
38.0	79.7	24,000*				45.0	78.8	24,000*				45.0	80.0	20,000*				50.0	79.5	18,000*			
40.0	79.0	24,000*				50.0	77.1	24,000*				50.0	78.4	20,000*				55.0	77.9	18,000*			
45.0	77.1	24,000*				55.0	75.2	24,000*				55.0	76.7	20,000*				60.0	76.3	18,000*			
50.0	75.3	24,000*	50.0	78.5	21,000*	60.0	73.5	24,000*	60.0	77.5	14,500*	60.0	75.1	20,000*	60.0	79.9	11,480*	65.0	74.8	17,100*			
55.0	73.4	24,000*	55.0	76.5	20,980*	65.0	71.7	22,000	65.0	75.7	13,930*	65.0	73.4	20,000*	65.0	78.2	11,020*	70.0	73.2	16,000*	70.0	78.7	8,840*
60.0	71.5	24,000*	60.0	74.6	20,120*	70.0	69.9	19,860	70.0	73.8	13,420*	70.0	71.7	18,760*	70.0	76.5	10,620*	75.0	71.5	14,960*	75.0	76.9	8,480*
65.0	69.6	21,730	65.0	72.7	19,350*	75.0	68.0	17,920	75.0	71.8	12,940*	75.0	69.9	17,570*	75.0	74.6	10,200*	80.0	69.9	14,100*	80.0	75.3	8,170*
70.0	67.7	19,620	70.0	70.7	18,650*	80.0	66.2	16,350	80.0	69.9	12,520*	80.0	68.2	16,530	80.0	72.8	9,850*	85.0	68.3	13,330*	85.0	73.6	7,890*
75.0	65.6	17,680	75.0	68.6	17,960*	85.0	64.3	14,990	85.0	68.0	12,140*	85.0	66.5	15,160	85.0	71.0	9,540*	90.0	66.6	12,630*	90.0	71.9	7,620*
80.0	63.7	16,130	80.0	66.6	16,600	90.0	62.4	13,800	90.0	66.1	11,770*	90.0	64.7	13,950	90.0	69.2	9,230*	95.0	64.8	11,970*	95.0	70.0	7,360*
85.0	61.6	14,790	85.0	64.5	15,180	95.0	60.3	12,650	95.0	63.9	11,440*	95.0	62.8	12,800	95.0	67.2	8,950*	100.0	63.1	11,410*	100.0	68.3	7,140*
90.0	59.6	13,600	90.0	62.4	13,950	100.0	58.3	11,700	100.0	61.9	11,130*	100.0	61.0	11,860	100.0	65.3	8,700*	105.0	61.4	10,890*	105.0	66.5	6,940*
95.0	57.3	12,470	95.0	60.1	12,780	105.0	56.3	10,860	105.0	59.8	10,860*	105.0	59.1	11,000	105.0	63.4	8,480*	110.0	59.6	10,310	110.0	64.6	6,740*
100.0	55.2	11,530	100.0	57.9	11,810	110.0	54.2	10,990	110.0	57.6	10,420	110.0	57.2	10,220	110.0	61.4	8,260*	115.0	57.7	9,560	115.0	62.6	6,560*
105.0	52.9	10,690	105.0	55.6	10,950	115.0	51.9	9,360	115.0	55.2	9,650	115.0	55.1	9,470	115.0	59.2	8,040*	120.0	55.9	8,920	120.0	60.7	6,390*
110.0	50.6	9,940	110.0	53.2	10,160	120.0	49.7	8,730	120.0	52.9	8,990	120.0	53.1	8,840	120.0	57.1	7,870*	125.0	54.0	8,350	125.0	58.7	6,230*
115.0	48.1	9,210				125.0	47.4	8,150				125.0	51.0	8,260	125.0	54.9	7,710*	130.0	52.0	7,820	130.0	56.6	6,100*
120.0	45.6	8,570				130.0	45.0	7,620				130.0	48.8	7,730				135.0	50.0	7,310	135.0	54.5	5,970*
125.0	43.0	8,020				135.0	42.5	7,140				135.0	46.6	7,250				140.0	47.8	6,830	140.0	52.2	5,860*
130.0	40.2	7,490				140.0	39.6	6,670				140.0	44.1	6,760				145.0	45.6	6,410			
135.0	37.3	6,940*				145.0	36.8	6,040*				145.0	41.7	6,340				150.0	43.3	6,040			
140.0	33.9	6,150*				150.0	33.7	5,370*				150.0	39.1	5,860*				155.0	41.0	5,620*			
												155.0	36.3	5,260*				160.0	38.3	5,040*			
												160.0	33.1	4,650*				165.0	35.6	4,540*			
																		170.0	32.7	4,010*			
Reeves	1		Reeves	1		Reeves	1		Reeves	1		Reeves	1		Reeves	1		Reeves	1		Reeves	1	

Note: Designed and rated to comply with ANSI Code B30.5
Capacities based on factors other than machine stability such as structural competence are shown by asterisk * in the charts.
Refer to notes on page 20.

CK1100G

SPECIFICATIONS

Fixed Jib Lift Capacity

Full Counterweight: 69,000 lbs

Carbody Weight: 31,800

140' Boom																	
30 ft Jib						40 ft Jib						50 ft Jib					
O-set Angle (deg.)						O-set Angle (deg.)						O-set Angle (deg.)					
10			30			10			30			10			30		
Load Radius (ft)	Boom Angle (deg.)	Rated Load (lbs)	Load Radius (ft)	Boom Angle (deg.)	Rated Load (lbs)	Load Radius (ft)	Boom Angle (deg.)	Rated Load (lbs)	Load Radius (ft)	Boom Angle (deg.)	Rated Load (lbs)	Load Radius (ft)	Boom Angle (deg.)	Rated Load (lbs)	Load Radius (ft)	Boom Angle (deg.)	Rated Load (lbs)
40.0	79.6	24,000*				45.0	79.4	24,000*				50.0	79.1	20,000*			
45.0	77.9	24,000*				50.0	77.8	24,000*				55.0	77.4	20,000*			
50.0	76.2	24,000*	50.0	79.2	21,000*	55.0	76.1	24,000*	55.0	79.9	15,320*	60.0	75.9	20,000*			
55.0	74.4	24,000*	55.0	77.4	21,000*	60.0	74.4	24,000*	60.0	78.2	14,720*	65.0	74.3	20,000*	65.0	78.8	11,170*
60.0	72.6	23,980	60.0	75.6	20,540*	65.0	72.8	21,730	65.0	76.5	14,170*	70.0	72.8	19,480*	70.0	77.2	10,780*
65.0	70.9	21,450	65.0	73.8	19,770*	70.0	71.1	19,590	70.0	74.8	13,690*	75.0	71.1	17,850	75.0	75.5	10,380*
70.0	69.1	19,330	70.0	72.0	19,060*	75.0	69.3	17,650	75.0	72.9	13,180*	80.0	69.4	16,260	80.0	73.8	10,030*
75.0	67.2	17,390	75.0	70.0	17,940	80.0	67.6	16,090	80.0	71.2	12,760*	85.0	67.8	14,880	85.0	72.1	9,720*
80.0	65.3	15,850	80.0	68.1	16,330	85.0	65.9	14,720	85.0	69.4	12,380*	90.0	66.2	13,660	90.0	70.4	9,430*
85.0	63.5	14,480	85.0	66.2	14,940	90.0	64.1	13,510	90.0	67.6	12,030*	95.0	64.4	12,520	95.0	68.6	9,120*
90.0	61.6	13,290	90.0	64.3	13,690	95.0	62.2	12,360	95.0	65.6	11,680*	100.0	62.7	11,570	100.0	66.8	8,880*
95.0	59.5	12,160	95.0	62.2	12,540	100.0	60.3	11,410	100.0	63.7	11,370*	105.0	60.9	10,710	105.0	65.0	8,660*
100.0	57.5	11,220	100.0	60.1	11,550	105.0	58.5	10,580	105.0	61.8	10,970	110.0	59.2	9,940	110.0	63.2	8,440*
105.0	55.5	10,380	105.0	58.1	10,690	110.0	56.6	9,810	110.0	59.8	10,180	115.0	57.3	9,190	115.0	61.2	8,220*
110.0	53.4	9,630	110.0	55.9	9,890	115.0	54.5	9,060	115.0	57.6	9,410	120.0	55.4	8,550	120.0	59.3	8,040*
115.0	51.1	8,900	115.0	53.5	9,120	120.0	52.5	8,420	120.0	55.5	8,730	125.0	53.5	7,980	125.0	57.3	7,870*
120.0	48.9	8,260	120.0	51.3	8,480	125.0	50.4	7,840	125.0	53.4	8,130	130.0	51.6	7,450	130.0	55.3	7,710*
125.0	46.6	7,690				130.0	48.2	7,310				135.0	49.5	6,940	135.0	53.1	7,250
130.0	44.2	7,180				135.0	46.0	6,830				140.0	47.3	6,450	140.0		
135.0	41.7	6,700				140.0	43.5	6,370				145.0	45.1	6,040	145.0		
140.0	38.8	6,060*				145.0	41.1	5,880*				150.0	42.9	5,640*	150.0		
145.0	36.0	5,400*				150.0	38.5	5,290*				155.0	40.5	5,090*	155.0		
150.0	32.9	4,760*				155.0	35.7	4,690*				160.0	37.8	4,540*	160.0		
						160.0	32.5	4,070*				170.0	32.2	3,500*	170.0		
															175.0	34.7	3,410*
Reeves	1		Reeves	1		Reeves	1		Reeves	1		Reeves	1		Reeves	1	
Reeves	1		Reeves	1		Reeves	1		Reeves	1		Reeves	1		Reeves	1	

150' Boom																	
30 ft Jib						40 ft Jib						50 ft Jib					
O-set Angle (deg.)						O-set Angle (deg.)						O-set Angle (deg.)					
10			30			10			30			10			30		
Load Radius (ft)	Boom Angle (deg.)	Rated Load (lbs)	Load Radius (ft)	Boom Angle (deg.)	Rated Load (lbs)	Load Radius (ft)	Boom Angle (deg.)	Rated Load (lbs)	Load Radius (ft)	Boom Angle (deg.)	Rated Load (lbs)	Load Radius (ft)	Boom Angle (deg.)	Rated Load (lbs)	Load Radius (ft)	Boom Angle (deg.)	Rated Load (lbs)
45.0	78.6	24,000*				45.0	80.0	24,000*				50.0	79.6	20,000*			
50.0	77.0	24,000*	50.0	79.9	21,000*	50.0	78.5	24,000*				55.0	78.1	20,000*			
55.0	75.3	24,000*	55.0	78.1	21,000*	55.0	76.8	24,000*				60.0	76.6	20,000*			
60.0	73.6	23,800	60.0	76.4	20,890*	60.0	75.3	24,000*	60.0	78.9	14,920*	65.0	75.1	20,000*	65.0	79.4	11,330*
65.0	72.0	21,270	65.0	74.8	20,150*	65.0	73.7	21,580	65.0	77.3	14,390*	70.0	73.7	19,640	70.0	77.9	10,930*
70.0	70.3	19,150	70.0	73.1	19,440*	70.0	72.1	19,420	70.0	75.7	13,910*	75.0	72.1	17,680	75.0	76.3	10,530*
75.0	68.5	17,210	75.0	71.2	17,810	75.0	70.5	17,480	75.0	73.9	13,420*	80.0	70.5	16,090	80.0	74.7	10,200*
80.0	66.8	15,670	80.0	69.5	16,200	80.0	68.8	15,890	80.0	72.3	13,000*	85.0	69.0	14,700	85.0	73.1	9,870*
85.0	65.1	14,300	85.0	67.7	14,790	85.0	67.2	14,520	85.0	70.6	12,630*	90.0	67.5	13,490	90.0	71.5	9,590*
90.0	63.3	13,110	90.0	65.9	13,530	90.0	65.6	13,310	90.0	68.9	12,270*	95.0	65.8	12,340	95.0	69.8	9,300*
95.0	61.4	11,990	95.0	63.9	12,360	95.0	63.8	12,190	95.0	67.1	11,920*	100.0	64.2	11,390	100.0	68.2	9,060*
100.0	59.6	11,040	100.0	62.1	11,390	100.0	62.1	11,240	100.0	65.3	11,610*	105.0	62.6	10,530	105.0	66.5	8,810*
105.0	57.7	10,200	105.0	60.2	10,510	105.0	60.3	10,380	105.0	63.5	10,820	110.0	60.9	9,760	110.0	64.8	8,590*
110.0	55.8	9,430	110.0	58.2	9,720	110.0	58.6	9,610	110.0	61.7	10,030	115.0	59.1	9,010	115.0	62.9	8,390*
115.0	53.7	8,700	115.0	56.1	8,970	115.0	56.7	8,860	115.0	59.7	9,230	120.0	57.4	8,370	120.0	61.2	8,200*
120.0	51.7	8,090	120.0	54.0	8,310	120.0	54.8	8,240	120.0	57.8	8,570	125.0	55.7	7,780	125.0	59.3	8,020*
125.0	49.6	7,510	125.0	51.8	7,710	125.0	52.9	7,670	125.0	55.8	7,950	130.0	53.9	7,250	130.0	57.5	7,620
130.0	47.5	6,980				130.0	51.0	7,140	130.0	53.8	7,400	135.0	52.0	6,740	135.0	55.6	7,090
135.0	45.3	6,500				135.0	49.0	6,630				140.0	50.0	6,260	140.0	53.4	6,590
140.0	42.8	6,010*				140.0	46.7	6,170				145.0	48.1	5,840	145.0		
145.0	40.3	5,420*				145.0	44.6	5,750				150.0	46.0	5,460	150.0		
150.0	37.8	4,820*				150.0	42.3	5,220*				155.0	43.9	4,980*	155.0		
155.0	35.0	4,250*				155.0	39.9	4,690*				160.0	41.6	4,450*	160.0		
160.0	31.8	3,650*				160.0	37.3	4,140*				170.0	36.8	3,520*	170.0		
						165.0	34.6	3,610*				175.0	34.2	3,160*	175.0		
Reeves	1		Reeves	1		Reeves	1		Reeves	1		Reeves	1		Reeves	1	
Reeves	1		Reeves	1		Reeves	1		Reeves	1		Reeves	1		Reeves	1	

Note: Designed and rated to comply with ANSI Code B30.5

Capacities based on factors other than machine stability such as structural competence are shown by asterisk * in the charts.

Refer to notes on page 20.



CK1100G SPECIFICATIONS

Fixed Jib Lift Capacity

Full Counterweight: 69,000 lbs Carbody Weight: 31,800

160' Boom																							
30 ft Jib						40 ft Jib						50 ft Jib						60 ft Jib					
O-set Angle (deg.)						O-set Angle (deg.)						O-set Angle (deg.)						O-set Angle (deg.)					
10			30			10			30			10			30			10			30		
Load Radius (ft)	Boom Angle (deg.)	Rated Load (lbs)	Load Radius (ft)	Boom Angle (deg.)	Rated Load (lbs)	Load Radius (ft)	Boom Angle (deg.)	Rated Load (lbs)	Load Radius (ft)	Boom Angle (deg.)	Rated Load (lbs)	Load Radius (ft)	Boom Angle (deg.)	Rated Load (lbs)	Load Radius (ft)	Boom Angle (deg.)	Rated Load (lbs)	Load Radius (ft)	Boom Angle (deg.)	Rated Load (lbs)	Load Radius (ft)	Boom Angle (deg.)	Rated Load (lbs)
45.0	79.2	24,000*				50.0	79.0	24,000*				55.0	78.7	20,000*				55.0	79.6	18,000*			
50.0	77.7	24,000*				55.0	77.5	24,000*				60.0	77.3	20,000*				60.0	78.3	18,000*			
55.0	76.1	24,000*	55.0	78.8	21,000*	60.0	76.0	24,000*	60.0	79.5	15,120*	65.0	75.9	20,000*	65.0	80.0	11,440*	65.0	76.9	18,000*			
60.0	74.5	23,720	60.0	77.2	21,000*	65.0	74.6	21,470	65.0	78.0	14,590*	70.0	74.5	19,530	70.0	78.5	11,060*	70.0	75.6	17,650*	70.0	80.4	9,140*
65.0	73.0	21,180	65.0	75.6	20,500*	70.0	73.1	19,310	70.0	76.4	14,100*	75.0	72.9	17,570	75.0	77.0	10,670*	75.0	74.1	16,570*	75.0	78.9	8,810*
70.0	71.4	19,040	70.0	74.0	19,730	75.0	71.5	17,370	75.0	74.8	13,640*	80.0	71.5	15,980	80.0	75.5	10,330*	80.0	72.8	15,670*	80.0	77.5	8,530*
75.0	69.7	17,100	75.0	72.3	17,720	80.0	70.0	15,780	80.0	73.2	13,220*	85.0	70.1	14,590	85.0	74.0	10,030*	85.0	71.4	14,700	85.0	76.1	8,240*
80.0	68.1	15,540	80.0	70.7	16,090	85.0	68.4	14,410	85.0	71.7	12,850*	90.0	68.6	13,350	90.0	72.5	9,740*	90.0	70.0	13,490	90.0	74.6	8,000*
85.0	66.5	14,190	85.0	69.0	14,680	90.0	66.9	13,200	90.0	70.1	12,500*	95.0	67.0	12,210	95.0	70.9	9,450*	95.0	68.5	12,340	95.0	73.1	7,760*
90.0	64.8	12,980	90.0	67.3	13,440	95.0	65.2	12,050	95.0	68.4	12,140*	100.0	65.5	11,260	100.0	69.3	9,210*	100.0	67.1	11,370	100.0	71.6	7,530*
95.0	63.0	11,860	95.0	65.5	12,270	100.0	63.6	11,110	100.0	66.7	11,640	105.0	64.0	10,400	105.0	67.8	8,970*	105.0	65.7	10,490	105.0	70.2	7,310*
100.0	61.3	10,910	100.0	63.8	11,280	105.0	62.0	10,250	105.0	65.1	10,730	110.0	62.5	9,610	110.0	66.2	8,770*	110.0	64.2	9,720	110.0	68.7	7,140*
105.0	59.6	10,070	105.0	62.0	10,400	110.0	60.4	9,470	110.0	63.4	9,920	115.0	60.8	8,860	115.0	64.5	8,550*	115.0	62.7	8,970	115.0	67.0	6,940*
110.0	57.9	9,300	110.0	60.2	9,610	115.0	58.6	8,730	115.0	61.5	9,120	120.0	59.2	8,220	120.0	62.8	8,350*	120.0	61.2	8,310	120.0	65.5	6,790*
115.0	55.9	8,550	115.0	58.2	8,840	120.0	56.9	8,090	120.0	59.8	8,460	125.0	57.6	7,620	125.0	61.1	8,090	125.0	59.7	7,730	125.0	63.9	6,610*
120.0	54.1	7,930	120.0	56.3	8,200	125.0	55.1	7,510	125.0	58.0	7,840	130.0	55.9	7,090	130.0	59.4	7,510	130.0	58.1	7,180	130.0	62.3	6,480*
125.0	52.2	7,360	125.0	54.4	7,580	130.0	53.3	6,960	130.0	56.1	7,270	135.0	54.2	6,590	135.0	57.6	6,980	135.0	56.5	6,670	135.0	60.7	6,340*
130.0	50.2	6,830	130.0	52.4	7,030	135.0	51.5	6,480	135.0	54.2	6,760	140.0	52.4	6,100	140.0	55.7	6,450	140.0	54.8	6,190	140.0	58.9	6,210*
135.0	48.2	6,320				140.0	49.5	5,990	140.0	52.1	6,260	145.0	50.6	5,680	145.0	53.8	5,990	145.0	53.2	5,770	145.0	57.1	6,080*
140.0	46.0	5,860				145.0	47.5	5,570				150.0	48.7	5,290	150.0	51.9	5,570	150.0	51.5	5,370	150.0	55.4	5,750
145.0	43.9	5,310*				150.0	45.5	5,090*				155.0	46.8	4,800*				155.0	49.7	4,960*	155.0	53.5	5,350
150.0	41.6	4,760*				155.0	43.4	4,580*				160.0	44.7	4,320*				160.0	47.8	4,490*	160.0	51.5	4,960
155.0	39.2	4,230*				160.0	41.1	4,050*				165.0	42.7	3,880*				165.0	46.0	4,050*			
160.0	36.6	3,680*				165.0	38.7	3,590*				170.0	40.6	3,430*				170.0	44.1	3,650*			
165.0	33.9	3,170*				170.0	36.3	3,100*				175.0	38.3	3,020*				175.0	42.1	3,240*			
Reeves	1		Reeves	1		Reeves	1		Reeves	1		Reeves	1		Reeves	1		Reeves	1		Reeves	1	

170' Boom																							
30 ft Jib						40 ft Jib						50 ft Jib						60 ft Jib					
O-set Angle (deg.)						O-set Angle (deg.)						O-set Angle (deg.)						O-set Angle (deg.)					
10			30			10			30			10			30			10			30		
Load Radius (ft)	Boom Angle (deg.)	Rated Load (lbs)	Load Radius (ft)	Boom Angle (deg.)	Rated Load (lbs)	Load Radius (ft)	Boom Angle (deg.)	Rated Load (lbs)	Load Radius (ft)	Boom Angle (deg.)	Rated Load (lbs)	Load Radius (ft)	Boom Angle (deg.)	Rated Load (lbs)	Load Radius (ft)	Boom Angle (deg.)	Rated Load (lbs)	Load Radius (ft)	Boom Angle (deg.)	Rated Load (lbs)	Load Radius (ft)	Boom Angle (deg.)	Rated Load (lbs)
45.0	79.8	24,000*				50.0	79.6	24,000*				55.0	79.2	20,000*				55.0	80.0	18,000*			
50.0	78.3	24,000*				55.0	78.1	24,000*				60.0	77.9	20,000*				60.0	78.8	18,000*			
55.0	76.8	24,000*	55.0	79.4	21,000*	60.0	76.7	23,800	60.0	80.0	15,290*	65.0	76.5	20,000*	65.0	77.5	18,000*	65.0	77.5	18,000*			
60.0	75.3	23,500	60.0	77.9	21,000*	65.0	75.3	21,250	65.0	78.6	14,770*	70.0	75.2	19,310	70.0	79.1	11,170*	70.0	76.2	18,000*			
65.0	73.8	20,940	65.0	76.4	20,830*	70.0	73.9	19,090	70.0	77.1	14,300*	75.0	73.8	17,350	75.0	77.6	10,800*	75.0	74.9	17,080*	75.0	79.4	8,900*
70.0	72.4	18,820	70.0	74.9	19,530	75.0	72.4	17,150	75.0	75.6	13,840*	80.0	72.4	15,760	80.0	76.2	10,490*	80.0	73.6	15,890	80.0	78.1	8,610*
75.0	70.8	16,880	75.0	73.2	17,520	80.0	71.0	15,560	80.0	74.1	13,420*	85.0	71.0	14,370	85.0	74.8	10,180*	85.0	72.3	14,500	85.0	76.7	8,350*
80.0	69.3	15,320	80.0	71.7	15,890	85.0	69.5	14,170	85.0	72.6	13,050*	90.0	69.6	13,130	90.0	73.4	9,890*	90.0	71.0	13,270	90.0	75.4	8,110*
85.0	67.7	13,950	85.0	70.1	14,480	90.0	68.1	12,960	90.0	71.1	12,690*	95.0	68.2	11,990	95.0	71.9	9,610*	95.0	69.5	12,100	95.0	73.9	7,870*
90.0	66.2	12,740	90.0	68.6	13,240	95.0	66.5	11,810	95.0	69.5	12,360*	100.0	66.7	11,020	100.0	70.4	9,360*	100.0	68.2	11,150	100.0	72.5	7,640*
95.0	64.5	11,610	95.0	66.9	12,050	100.0	65.0	10,860	100.0	68.0	11,440	105.0	65.3	10,160	105.0	68.9	9,120*	105.0	66.8	10,270	105.0	71.1	7,450*
100.0	62.9	10,670	100.0	65.2	11,080	105.0	63.5	10,000	105.0	66.4	10,530	110.0	63.9	9,390	110.0	67.4	8,900*	110.0	65.5	9,470	110.0	69.7	7,250*
105.0	61.3	9,810	105.0	63.6	10,200	110.0	61.9	9,230	110.0	64.8	9,720	115.0	62.3	8,610	115.0	65.8	8,680*	115.0	64.0	8,730	115.0	68.2	7,050*
110.0	59.7	9,060	110.0	61.9	9,390	115.0	60.3	8,480	115.0	63.1	8,920	120.0	60.8	7,980	120.0	64.3	8,500	120.0	62.6	8,090	120.0	66.7	6,900*
115.0	57.9	8,310	115.0	60.1	8,610	120.0	58.7	7,840	120.0	61.5	8,240	125.0	59.3	7,400	125.0	62.7	7,890	125.0	61.1	7,490	125.0	65.2	6,740*
120.0	56.2	7,670	120.0	58.3	7,980	125.0	57.0	7,270	125.0	59.8	7,640	130.0	57.7	6,850	130.0	61.1	7,310	130.0	59.7	6,940	130.0	63.7	6,590*
125.0	54.4	7,090	125.0	56.5	7,360	130.0	55.4	6,720	130.0	58.1	7,070	135.0	56.1	6,340	135.0	59.5	6,760	135.0	58.2	6,450	135.0	62.2	6,450*
130.0	52.6	6,560	130.0	54.7	6,810	135.0	53.7	6,230	135.0	56.3	6,540	140.0	54.4	5,860	140.0	57.7	6,260	140.0	56.6	5,950	140.0	60.5	6,300*
135.0	50.8	6,080	135.0	52.8	6,300	140.0	51.8	5,750	140.0	54.4	6,040	145.0	52.8	5,440	145.0	56.0	5,790	145.0	55.1	5,530	145.0	58.9	5,970
140.0	48.8	5,590				145.0	50.1	5,290*	145.0	52.6	5,590	150.0	51.1	4,960*	150.0	54.2	5,370	150.0	53.5	5,070*	150.0	57.3	5,550
145.0	46.8	5,040*				150.0	48.2	4,780*				155.0	49.3	4,490*	155.0	52.4	4,930*	155.0	51.9	4,620*	155.0	55.6	5,150
150.0	44.8	4,540*				155.0	46.3	4,320*				160.0	47.4	4,030*				160.0	50.1	4,160*	160.0	53.8	4,670*
155.0	42.7	4,030*				160.0	44.2	3,810*				165.0	45.6	3,610*				165.0	48.5	3,760*	165.0	52.0	4,250*
160.0	40.4	3,520*				165.0	42.2	3,370*				170.0	43.7	3,190*				170.0	46.7	3,370*			
165.0	38.1	3,040*																					

CK1100G

SPECIFICATIONS

Fixed Jib Lift Capacity

Full Counterweight: 69,000 lbs

Carbody Weight: 31,800

180' Boom																							
30 ft Jib						40 ft Jib						50 ft Jib						60 ft Jib					
O set Angle (deg.)						O set Angle (deg.)						O set Angle (deg.)						O set Angle (deg.)					
10			30			10			30			10			30			10			30		
Load Radius (ft)	Boom Angle (deg.)	Rated Load (lbs)	Load Radius (ft)	Boom Angle (deg.)	Rated Load (lbs)	Load Radius (ft)	Boom Angle (deg.)	Rated Load (lbs)	Load Radius (ft)	Boom Angle (deg.)	Rated Load (lbs)	Load Radius (ft)	Boom Angle (deg.)	Rated Load (lbs)	Load Radius (ft)	Boom Angle (deg.)	Rated Load (lbs)	Load Radius (ft)	Boom Angle (deg.)	Rated Load (lbs)	Load Radius (ft)	Boom Angle (deg.)	Rated Load (lbs)
50.0	78.9	22,200*				55.0	78.7	21,670*				55.0	79.7	20,000*				60.0	79.3	18,000*			
55.0	77.4	21,750*	55.0	79.9	21,000*	60.0	77.3	21,270*				60.0	78.4	20,000*				65.0	78.0	18,000*			
60.0	76.0	21,360*	60.0	78.5	20,870*	65.0	76.0	20,870*	65.0	79.1	14,940*	65.0	77.1	20,000*				70.0	76.8	18,000*			
65.0	74.6	20,700	65.0	77.1	20,500*	70.0	74.7	18,840	70.0	77.7	14,480*	70.0	75.9	19,060	70.0	79.6	11,300*	75.0	75.5	17,230	75.0	79.9	8,990*
70.0	73.2	18,560	70.0	75.6	19,310	75.0	73.2	16,880	75.0	76.3	14,020*	75.0	74.5	17,100	75.0	78.2	10,930*	80.0	74.3	15,650	80.0	78.6	8,700*
75.0	71.7	16,600	75.0	74.1	17,300	80.0	71.9	15,290	80.0	74.9	13,620*	80.0	73.2	15,490	80.0	76.9	10,600*	85.0	73.0	14,240	85.0	77.3	8,460*
80.0	70.3	15,030	80.0	72.6	15,670	85.0	70.5	13,910	85.0	73.5	13,240*	85.0	71.9	14,100	85.0	75.5	10,310*	90.0	71.8	13,020	90.0	76.0	8,200*
85.0	68.8	13,660	85.0	71.2	14,240	90.0	69.1	12,690	90.0	72.1	12,890*	90.0	70.6	12,890	90.0	74.2	10,030*	95.0	70.4	11,860	95.0	74.6	7,950*
90.0	67.4	12,470	90.0	69.7	13,000	95.0	67.6	11,550	95.0	70.5	12,210	95.0	69.2	11,720	95.0	72.7	9,740*	100.0	69.2	10,890	100.0	73.3	7,760*
95.0	65.8	11,330	95.0	68.1	11,810	100.0	66.2	10,600	100.0	69.1	11,190	100.0	67.8	10,750	100.0	71.4	9,500*	105.0	67.9	10,000	105.0	72.0	7,530*
100.0	64.3	10,380	100.0	66.5	10,820	105.0	64.8	9,740	105.0	67.6	10,290	105.0	66.5	9,890	105.0	70.0	9,280*	110.0	66.6	9,230	110.0	70.7	7,360*
105.0	62.8	9,540	105.0	65.0	9,940	110.0	63.3	8,970	110.0	66.1	9,470	110.0	65.1	9,100	110.0	68.5	9,060*	115.0	65.2	8,460	115.0	69.2	7,160*
110.0	61.3	8,770	110.0	63.4	9,140	115.0	61.8	8,200	115.0	64.5	8,680	115.0	63.6	8,350	115.0	67.0	8,840*	120.0	63.8	7,820	120.0	67.8	7,010*
115.0	59.6	8,020	115.0	61.7	8,370	120.0	60.3	7,560	120.0	63.0	8,000	120.0	62.2	7,710	120.0	65.6	8,280	125.0	62.5	7,230	125.0	66.4	6,850*
120.0	58.0	7,380	120.0	60.1	7,710	125.0	58.8	6,980	125.0	61.4	7,380	125.0	60.8	7,120	125.0	64.1	7,640	130.0	61.1	6,670	130.0	65.0	6,700*
125.0	56.4	6,810	125.0	58.4	7,090	130.0	57.2	6,430	130.0	59.8	6,830	130.0	59.3	6,560	130.0	62.6	7,070	135.0	59.7	6,150*	135.0	63.6	6,540*
130.0	54.7	6,280	130.0	56.8	6,540	135.0	55.6	5,950	135.0	58.2	6,300	135.0	57.8	6,080	135.0	61.1	6,540	140.0	58.2	5,590*	140.0	62.0	6,210
135.0	53.0	5,770*	135.0	55.0	6,040	140.0	53.9	5,370*	140.0	56.4	5,770	140.0	56.2	5,510*	140.0	59.4	6,010	145.0	56.8	5,110*	145.0	60.5	5,700*
140.0	51.2	5,180*	140.0	53.1	5,480*	145.0	52.3	4,870*	145.0	54.7	5,260*	145.0	54.7	5,020*	145.0	57.8	5,510*	150.0	55.3	4,620*	150.0	59.0	5,220*
145.0	49.4	4,650*	145.0	51.3	4,960*	150.0	50.6	4,380*	150.0	53.0	4,760*	150.0	53.1	4,540*	150.0	56.2	5,020*	155.0	53.8	4,210*	155.0	57.5	4,760*
150.0	47.6	4,160*				155.0	48.8	3,920*				155.0	51.5	4,100*	155.0	54.5	4,560*	160.0	52.2	3,760*	160.0	55.8	4,290*
155.0	45.7	3,680*				160.0	46.9	3,460*				160.0	49.8	3,630*	160.0	52.7	4,070*	165.0	50.6	3,370*	165.0	54.1	3,880*
160.0	43.6	3,210*				165.0	45.1	3,040*				165.0	48.1	3,240*				170.0	52.4	3,480*			
Reeves	1		Reeves	1		Reeves	1		Reeves	1		Reeves	1		Reeves	1		Reeves	1		Reeves	1	

190' Boom																							
30 ft Jib						40 ft Jib						50 ft Jib						60 ft Jib					
O set Angle (deg.)						O set Angle (deg.)						O set Angle (deg.)						O set Angle (deg.)					
10			30			10			30			10			30			10			30		
Load Radius (ft)	Boom Angle (deg.)	Rated Load (lbs)	Load Radius (ft)	Boom Angle (deg.)	Rated Load (lbs)	Load Radius (ft)	Boom Angle (deg.)	Rated Load (lbs)	Load Radius (ft)	Boom Angle (deg.)	Rated Load (lbs)	Load Radius (ft)	Boom Angle (deg.)	Rated Load (lbs)	Load Radius (ft)	Boom Angle (deg.)	Rated Load (lbs)	Load Radius (ft)	Boom Angle (deg.)	Rated Load (lbs)	Load Radius (ft)	Boom Angle (deg.)	Rated Load (lbs)
50.0	79.4	19,440*				55.0	79.2	18,950*				60.0	78.9	18,470*				60.0	79.7	18,000*			
55.0	78.0	19,020*				60.0	77.9	18,560*				65.0	77.7	18,070*				65.0	78.5	17,960*			
60.0	76.7	18,620*	60.0	79.0	18,250*	65.0	76.6	18,160*	65.0	79.6	15,100*	70.0	76.5	17,700*				70.0	77.4	17,590*			
65.0	75.4	18,250*	65.0	77.7	17,870*	70.0	75.4	17,810*	70.0	78.3	14,660*	75.0	75.2	16,930	75.0	78.7	11,040*	75.0	76.1	17,080			
70.0	74.0	17,870*	70.0	76.3	17,520*	75.0	74.0	16,710	75.0	76.9	14,190*	80.0	73.9	15,320	80.0	77.5	10,730*	80.0	74.9	15,470	80.0	79.1	8,790*
75.0	72.6	16,420	75.0	74.9	17,150	80.0	72.7	15,120	80.0	75.6	13,800*	85.0	72.7	13,930	85.0	76.2	10,420*	85.0	73.8	14,060	85.0	77.9	8,550*
80.0	71.2	14,850	80.0	73.5	15,520	85.0	71.4	13,730	85.0	74.3	13,420*	90.0	71.4	12,690	90.0	74.9	10,160*	90.0	72.6	12,830	90.0	76.6	8,310*
85.0	69.9	13,490	85.0	72.1	14,080	90.0	70.1	12,520	90.0	72.9	13,090*	95.0	70.1	11,550	95.0	73.5	9,870*	95.0	71.3	11,680	95.0	75.3	8,060*
90.0	68.5	12,270	90.0	70.7	12,850	95.0	68.7	11,370	95.0	71.5	12,050	100.0	68.8	10,580	100.0	72.2	9,630*	100.0	70.1	10,710	100.0	74.1	7,840*
95.0	67.0	11,150	95.0	69.2	11,660	100.0	67.3	10,420	100.0	70.1	11,040	105.0	67.5	9,720	105.0	70.9	9,410*	105.0	68.8	9,830	105.0	72.8	7,640*
100.0	65.6	10,200	100.0	67.7	10,670	105.0	66.0	9,540	105.0	68.7	10,140	110.0	66.2	8,920	110.0	69.6	9,190*	110.0	67.6	9,030	110.0	71.5	7,450*
105.0	64.1	9,340	105.0	66.3	9,780	110.0	64.6	8,770	110.0	67.3	9,320	115.0	64.8	8,170	115.0	68.1	8,810	115.0	66.3	8,260*	115.0	70.2	7,270*
110.0	62.7	8,570	110.0	64.8	8,970	115.0	63.1	8,020	115.0	65.8	8,530	120.0	63.5	7,510	120.0	66.7	8,130	120.0	65.0	7,580*	120.0	68.9	7,090*
115.0	61.1	7,840	115.0	63.2	8,200	120.0	61.7	7,380	120.0	64.3	7,840	125.0	62.1	6,900*	125.0	65.3	7,490	125.0	63.7	6,940*	125.0	67.5	6,940*
120.0	59.6	7,200	120.0	61.7	7,530	125.0	60.3	6,790	125.0	62.9	7,230	130.0	60.8	6,300*	130.0	63.9	6,870*	130.0	62.4	6,370*	130.0	66.2	6,790*
125.0	58.1	6,630	125.0	60.1	6,940	130.0	58.8	6,190*	130.0	61.4	6,650	135.0	59.4	5,750*	135.0	62.5	6,300*	135.0	61.1	5,820*	135.0	64.8	6,480*
130.0	56.6	6,040*	130.0	58.5	6,370	135.0	57.4	5,640*	135.0	59.9	6,080*	140.0	57.9	5,200*	140.0	60.9	5,730*	140.0	59.7	5,260*	140.0	63.4	5,900*
135.0	55.0	5,460*	135.0	56.9	5,790*	140.0	55.8	5,070*	140.0	58.2	5,510*	145.0	56.4	4,710*	145.0	59.5	5,220*	145.0	58.3	4,780*	145.0	62.0	5,400*
140.0	53.3	4,890*	140.0	55.2	5,220*	145.0	54.2	4,580*	145.0	56.6	4,980*	150.0	55.0	4,250*	150.0	57.9	4,730*	150.0	56.9	4,340*	150.0	60.5	4,930*
145.0	51.6	4,380*	145.0	53.5	4,690*	150.0	52.7	4,120*	150.0	55.0	4,490*	155.0	53.5	3,810*	155.0	56.4	4,290*	155.0	55.5	3,900*	155.0	59.1	4,470*
150.0	50.0	3,920*	150.0	51.8	4,210*	155.0	51.0	3,680*	155.0	53.4	4,030*	160.0	51.8	3,370*	160.0	54.7	3,830*	160.0	54.0	3,480*	160.0	57.5	4,030*
155.0	48.2	3,460*				160.0	49.3	3,210*				160.0			165.0	53.1	3,410*	165.0	52.6	3,080*	165.0	56.0	3,610*
																					170.0	54.4	3,240*
Reeves	1		Reeves	1		Reeves	1		Reeves	1		Reeves	1		Reeves	1		Reeves	1		Reeves	1	

CK1100G SPECIFICATIONS

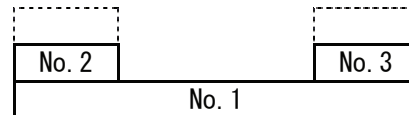
Supplemental Data - Clamshell

- Rated loads included in the charts are the maximum allowable freely suspended loads at a given boom length, boom angle and load radius, and have been determined for the machine standing level on firm supporting surface under ideal operating conditions. The user must limit or de-rate rated loads to allow for adverse conditions (such as soft or uneven ground, out-of-level conditions, wind, side loads, pendulum action, jerking or sudden stopping of loads, inexperience of personnel, multiple machine lifts, and traveling with a load).
- Rated loads do not exceed 66% of minimum tipping loads. Rated loads based on factors other than machine stability such as structural competence are shown by asterisk * in the charts.
- The machine must be reeved and set-up as stated in the operation manual and all the instruction manuals if these manuals are missing, obtain replacements.
 - Machine shall be positively secured to prevent shifting.
 - Boom backstops are required for all boom length.
 - Gantry must be fully raised position for all operations.
 - Crawlers must be fully extended and be locked in position.
 - Must have 43,600 lbs (2) Counterweights installed, and without carbody weights.
- Do not attempt to lift where no radius on load is listed as crane may tip or collapse.
- Attempting to lift more than rated loads may cause machine to tip or collapse. Do not tip machine to determine rated loads.
- Weight of hooks, hook blocks, slings and other lifting devices are a part of the total load. Their total weight must be subtracted from the rated load to obtain the weight that can be lifted.
- The boom should be erected over the front of the crawlers, not laterally.
- Least stable position is over the side.
- Maximum hoist load for number of reeving parts of line for hoist rope.

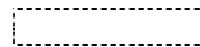
Maximum Load for Main Boom

No. of Parts of line	1
Maximum Loads (lbs)	22,000

- Rated loads listed apply only to the machine as originally manufactured and designed by KOBELCO CRANES CO., LTD. Modifications to this machine or use of equipment other than that specified can reduce operating capacity.
- Assembling the Counterweight
43,600 lbs counterweight (No. 1 ~ No. 3)
Without Carbody weights



Counterweights



Carbody
Weights

Operation of this equipment in excess of rated loads or disregard of instruction voids the warranty.

CK1100G SPECIFICATIONS

Clamshell

Boom:

Welded lattice construction using tubular, high-tensile steel chords with pin connections between each section.

Basic boom length: 40 ft (12.2 m)

Max. boom length: 120 ft (36.6 m)

Limit on clamshell bucket weight: 4,600 lbs (2,100 kg)

Optional tagline: Hydraulic operated type and spring type.

Boom Component Chart:

Boom length ft (m)	Boom arrangement
40 (12.2)	Base-Tip
50 (15.2)	Base-A-Tip
60 (18.3)	Base-A-A-Tip, Base-B-Tip
70 (21.3)	Base-A-B-Tip
80 (24.4)	Base-A-A-B-Tip, Base-B-B-Tip
90 (27.4)	Base-A-C-Tip
100 (30.5)	Base-A-A-B-B-Tip, Base-A-A-C-Tip
110 (33.5)	Base-A-B-C-Tip
120 (36.6)	Base-A-A-B-C-Tip, Base-B-B-C-Tip

Base = Boom Base

Insert: A = 10 ft (3.05 m)

B = 20 ft (6.10 m)

C = 40 ft (12.2 m)

Tip = Boom Tip

- Figures represent maximum allowable capacity, and assume level, ground and ideal working conditions.
- Capacities are calculated at 66% of the minimum tipping loads.
- Capacities are maximum recommended by PCSA Standard #4. Allowances must be made by the user for such unfavorable conditions as a sort of uneven supporting surface, rapid cycle operations, or bucket.
- The combined weight of the bucket and load must not exceed these capacities.

3 Counterweights (43,600 lbs) - Without Carbody weights - Crawlers in extended position.

40' Boom			50' Boom			60' Boom		
Load Radius (ft)	Boom Angle (deg.)	360° Rated Load (lbs)	Load Radius (ft)	Boom Angle (deg.)	360° Rated Load (lbs)	Load Radius (ft)	Boom Angle (deg.)	360° Rated Load (lbs)
22.0	63.7	22,000 *	26.0	64.3	22,000 *	30.0	64.6	22,000 *
24.0	60.5	22,000 *	28.0	61.7	22,000 *	32.0	62.5	22,000 *
26.0	57.1	22,000 *	30.0	59.0	22,000 *	34.0	60.3	21,400 *
28.0	53.5	22,000 *	32.0	56.3	22,000 *	36.0	58.1	20,200 *
30.0	49.8	22,000 *	34.0	53.5	21,400 *	38.0	55.8	19,200 *
32.0	45.9	22,000 *	36.0	50.5	20,200 *	40.0	53.4	18,200 *
34.0	41.7	21,400 *	38.0	47.4	19,200 *	42.0	51.0	17,300 *
36.0	37.0	20,200 *	40.0	44.2	18,200 *	44.0	48.4	16,500 *
38.0	31.8	19,200 *	42.0	40.7	17,300 *	46.0	45.8	15,800 *
40.0	25.7	18,200 *	44.0	37.0	16,500 *	48.0	43.0	15,200 *
			46.0	32.9	15,800 *	50.0	40.1	14,600 *
			48.0	28.3	15,200 *	52.0	37.0	14,000 *
						54.0	33.6	13,500 *
						56.0	29.9	13,000 *
						58.0	25.7	12,500 *

Refer to notes on page 29.



CK1100G SPECIFICATIONS

Clamshell

3 Counterweights (43,600 lbs) - Without Carbody weights - Crawlers in extended position.

70' Boom			80' Boom			90' Boom		
Load Radius (ft)	Boom Angle (deg.)	360° Rated Load (lbs)	Load Radius (ft)	Boom Angle (deg.)	360° Rated Load (lbs)	Load Radius (ft)	Boom Angle (deg.)	360° Rated Load (lbs)
34.0	64.9	21,400 *	38.0	65.1	19,200 *	42.0	65.2	17,300 *
36.0	63.1	20,200 *	40.0	63.5	18,200 *	44.0	63.8	16,500 *
38.0	61.2	19,200 *	42.0	61.9	17,300 *	46.0	62.4	15,800 *
40.0	59.3	18,200 *	44.0	60.2	16,500 *	48.0	60.9	15,200 *
42.0	57.4	17,300 *	46.0	58.6	15,800 *	50.0	59.5	14,600 *
44.0	55.4	16,500 *	48.0	56.9	15,200 *	52.0	58.0	14,000 *
46.0	53.4	15,800 *	50.0	55.1	14,600 *	54.0	56.4	13,500 *
48.0	51.3	15,200 *	52.0	53.3	14,000 *	56.0	54.9	13,000 *
50.0	49.1	14,600 *	54.0	51.5	13,500 *	58.0	53.3	12,500 *
52.0	46.9	14,000 *	56.0	49.6	13,000 *	60.0	51.7	12,100 *
54.0	44.6	13,500 *	58.0	47.7	12,500 *	62.0	50.0	11,700 *
56.0	42.2	13,000 *	60.0	45.7	12,100 *	64.0	48.3	11,400 *
58.0	39.6	12,500 *	62.0	43.7	11,700 *	66.0	46.6	11,000 *
60.0	37.0	12,100 *	64.0	41.5	11,400 *	68.0	44.8	10,700 *
62.0	34.1	11,700 *	66.0	39.3	11,000 *	70.0	43.0	10,400 *
64.0	31.0	11,400 *	68.0	37.0	10,700 *	72.0	41.0	10,100 *
66.0	27.6	11,000 *	70.0	34.5	10,400 *	74.0	39.0	9,700
			72.0	31.8	10,100 *	76.0	36.9	9,200
			74.0	28.9	9,800 *	78.0	34.7	9,000
			76.0	25.7	9,400 *	80.0	32.4	8,500
						82.0	29.9	8,300
						84.0	27.2	7,900
100' Boom			110' Boom			120' Boom		
Load Radius (ft)	Boom Angle (deg.)	360° Rated Load (lbs)	Load Radius (ft)	Boom Angle (deg.)	360° Rated Load (lbs)	Load Radius (ft)	Boom Angle (deg.)	360° Rated Load (lbs)
46.0	65.4	15,800 *	56.0	62.0	11,900 *	56.0	64.5	11,400 *
48.0	64.1	15,200 *	58.0	60.8	11,700 *	58.0	63.4	11,300 *
50.0	62.8	14,600 *	60.0	59.6	11,600 *	60.0	62.3	11,200 *
52.0	61.5	14,000 *	62.0	58.3	11,300 *	62.0	61.3	11,000 *
54.0	60.2	13,500 *	64.0	57.1	11,100 *	64.0	60.2	10,800 *
56.0	58.8	13,000 *	66.0	55.8	10,800 *	66.0	59.0	10,600 *
58.0	57.5	12,500 *	68.0	54.6	10,400 *	68.0	57.9	10,200 *
60.0	56.1	12,100 *	70.0	53.3	10,100	70.0	56.8	9,900
62.0	54.7	11,700 *	72.0	52.0	9,700	72.0	55.6	9,500
64.0	53.3	11,400 *	74.0	50.6	9,300	74.0	54.5	9,100
66.0	51.8	11,000 *	76.0	49.2	8,900	76.0	53.3	8,800
68.0	50.4	10,700 *	78.0	47.8	8,500	78.0	52.1	8,400
70.0	48.8	10,300	80.0	46.4	8,200	80.0	50.8	8,100
72.0	47.3	9,900	82.0	45.0	7,900	82.0	49.6	7,700
74.0	45.7	9,400	84.0	43.4	7,500	84.0	48.3	7,400
76.0	44.1	9,000	86.0	41.9	7,200	86.0	47.0	7,100
78.0	42.4	8,800	88.0	40.3	7,000	88.0	45.7	6,800
80.0	40.6	8,300	90.0	38.6	6,800	90.0	44.3	6,600
82.0	38.8	8,100	92.0	36.9	6,600	92.0	42.9	6,400
84.0	36.9	7,700	94.0	35.1	6,400	94.0	41.5	6,200
86.0	35.0	7,400	96.0	33.3	6,200	96.0	40.0	6,000
88.0	32.9	7,200	98.0	31.3	5,900	98.0	38.5	5,700
90.0	30.7	7,000	100.0	29.2	5,700	100.0	36.9	5,500
92.0	28.3	6,800	102.0	27.0	5,500	102.0	35.3	5,300
94.0	25.8	6,600	104.0	24.5	5,300	104.0	33.6	5,100
						106.0	31.8	5,000

Refer to notes on page 29.

CK1100G

SPECIFICATIONS

Supplemental Data - Barge

- Rated loads included in the charts are the maximum allowable freely suspended loads at a given boom length, boom angle and load radius, and have been determined for the machine standing level on firm supporting surface under ideal operating conditions. The user must limit or de-rate rated loads to allow for adverse conditions (such as soft or uneven ground, out-of-level conditions, wind, side loads, pendulum action, jerking or sudden stopping of loads, inexperience of personnel, multiple machine lifts, and traveling with a load).
- Rated loads do not exceed 75% of minimum tipping loads. Rated loads based on factors other than machine stability such as structural competence are shown by asterisk * in the charts.
- The machine must be reeved and set-up as stated in the operation manual and all the instruction manuals if these manuals are missing, obtain replacements.
 - Machine shall be positively secured to prevent shifting.
 - Boom backstops are required for all boom length.
 - Gantry must be fully raised position for all operations.
 - Crawlers must be fully extended and be locked in position.
 - Must have 69,000 lbs (5) Counterweights fully installed.
 - Must have 31,700 lbs (2) Carbody weights fully installed.
- Do not attempt to lift where no radius on load is listed as crane may tip or collapse.
- Attempting to lift more than rated loads may cause machine to tip or collapse. Do not tip machine to determine rated loads.
- Weight of hooks, hook blocks, slings and other lifting devices are a part of the total load. Their total weight must be subtracted from the rated load to obtain the weight that can be lifted.
- When lifting over boom point with jib or auxiliary sheave, rated loads for the boom must be deducted as shown below.

Jib Length	Aux Sheave	30 ft	40 ft	50 ft	60 ft
Deduct (lbs)	430	Not Applicable			

When auxiliary sheave is used for 8 or 7 reeving parts of line, it is not required to deduct 430 lbs from rated loads.

- To install the jib is prohibited when the machine is on a barge.
- The total load that can be lifted over an auxiliary sheave is the value for 430 lbs deducted from rated load for the boom without auxiliary sheave, but it should not exceed 24,000 lbs.

- Boom lengths that can attach auxiliary sheave are from 40 ft (12.2 m) to 190 ft (57.9 m).
- The boom should be erected over the front of the crawlers, not laterally.
- Least stable position is over the side.
- Maximum hoist load for number of reeving parts of line for hoist rope.

Maximum Load for Main Boom

No. of Parts of line	1	2	3	4	5
Maximum Loads (lbs)	25,200	50,400	75,600	100,800	126,000

No. of Parts of line	6	7	8
Maximum Loads (lbs)	151,200	176,400	220,000

Maximum Load for Auxiliary Sheave

No. of Parts of line	1
Maximum Loads (lbs)	24,000

- Weight of recommended hook block.

Hook Block	110 t	77 t	55 t	39 t	12 t ball hook
Weight (lbs)	3,815	1,990	1,875	1,545	660

Warning: If the weight of the hook block to be used is light than the recommended weight, the jib may turn over backv or will be difficult to lower the empty hook block.

- Rated loads listed apply only to the machine as originally manufactured and designed by KOBELCO CRANES CO., LTD. Modifications to this machine or use of equipment o than that specified can reduce operating capacity.
- Designed and rated to comply with ANSI Code B30.5.



CK1100G

SPECIFICATIONS

Barge

5 Counterweights (69,000 lbs) - 2 Carbody weights (31,800 lbs) - Crawlers in extended position.

40' Boom						50' Boom						60' Boom					
360° Rated Load (lbs)						360° Rated Load (lbs)						360° Rated Load (lbs)					
Load Radius (ft)	Boom Angle (deg.)	0 Degree Machine List	1 Degree Machine List	2 Degree Machine List	2 Degree Machine List	Load Radius (ft)	Boom Angle (deg.)	0 Degree Machine List	1 Degree Machine List	2 Degree Machine List	2 Degree Machine List	Load Radius (ft)	Boom Angle (deg.)	0 Degree Machine List	1 Degree Machine List	2 Degree Machine List	2 Degree Machine List
11.0	80.5	220,000 *				12.0	81.2	213,200 *				13.0	81.7	200,400 *			
12.0	79.0	213,300 *				13.0	80.0	200,600 *				14.0	80.7	187,400 *			
13.0	77.5	200,800 *				14.0	78.9	187,800 *				15.0	79.8	175,200 *			
14.0	76.0	188,100 *				15.0	77.7	175,600 *				16.0	78.8	164,800 *			
15.0	74.6	175,900 *	175,900 *			16.0	76.6	165,300 *				17.0	77.8	155,500 *			
16.0	73.1	165,500 *	165,500 *			17.0	75.4	156,000 *				18.0	76.8	146,900 *			
17.0	71.6	156,300 *	156,300 *	127,700 *		18.0	74.2	147,400 *	143,200 *			19.0	75.9	139,800 *	123,900 *		
18.0	70.1	147,800 *	146,400 *	126,100 *		19.0	72.9	140,100 *	132,200 *			20.0	74.9	132,200	118,100 *		
19.0	68.5	140,500 *	134,600 *	122,400 *		20.0	71.7	132,400	122,900			22.0	72.9	115,100	105,300		
20.0	66.9	132,800	124,900	116,500 *	100,300 *	22.0	69.3	115,300	106,800	98,500 *		24.0	70.9	100,800	93,000	81,600 *	
22.0	63.7	115,600	108,300	103,400	97,800 *	24.0	66.8	101,000	94,400	89,500 *	77,800 *	26.0	68.8	89,100	83,200	78,700	
24.0	60.4	101,300	95,600	92,000	88,400	26.0	64.3	89,400	84,500	80,700	75,600 *	28.0	66.7	80,500	75,300	71,600	63,000 *
26.0	57.0	89,600	85,600	82,700	79,900	28.0	61.7	80,700	76,400	73,400	70,700	30.0	64.6	72,800	68,700	65,700	61,500 *
28.0	53.4	80,900	77,400	75,100	72,900	30.0	59.1	73,000	69,700	67,200	64,900	32.0	62.5	66,600	63,200	60,600	58,400
30.0	49.8	73,300	70,600	68,700	67,000	32.0	56.3	67,000	63,900	61,900	60,000	34.0	60.3	61,600	58,400	56,200	54,400
32.0	45.8	67,200	64,800	63,400	62,000	34.0	53.4	62,000	59,100	57,400	55,900	36.0	58.0	57,300	54,200	52,400	50,800
34.0	41.2	61,700	60,000	58,900	57,800	36.0	50.3	57,800	55,000	53,600	52,300	38.0	55.7	53,100	50,600	49,100	47,700
36.0	36.2	56,600	55,700 *	54,700 *	53,700 *	38.0	47.3	53,600	51,400	50,100	49,000	40.0	53.4	49,300	47,500	46,100	44,900
38.0	31.1	51,500	51,000 *	49,700 *	48,400 *	40.0	44.0	49,800	48,100	47,200	46,300	42.0	50.9	46,600	44,600	43,500	42,400
40.0	25.4	45,900 *	44,800 *	43,600 *	42,500 *	42.0	40.4	47,000	45,400	44,600	43,800	44.0	48.3	43,800	42,100	41,100	40,200
						44.0	36.7	44,300	42,900	42,200	41,500	46.0	45.8	41,100	39,800	38,900	38,100
						46.0	62.9	41,500	40,600	40,000	39,500	48.0	42.8	39,200	37,700	37,000	36,300
						48.0	27.6	38,300	38,200 *	37,400 *	36,700 *	50.0	39.9	37,200	35,900	35,300	34,800
						50.0	22.3	35,100	34,800 *	33,900 *		55.0	31.2	32,900	31,900 *	31,500 *	31,100 *
												60.0	20.7	28,600 *			
Reeves		8	7	6	4	Reeves		8	6	4	4	Reeves		8	5	4	4
70' Boom						80' Boom						90' Boom					
360° Rated Load (lbs)						360° Rated Load (lbs)						360° Rated Load (lbs)					
Load Radius (ft)	Boom Angle (deg.)	0 Degree Machine List	1 Degree Machine List	2 Degree Machine List	2 Degree Machine List	Load Radius (ft)	Boom Angle (deg.)	0 Degree Machine List	1 Degree Machine List	2 Degree Machine List	2 Degree Machine List	Load Radius (ft)	Boom Angle (deg.)	0 Degree Machine List	1 Degree Machine List	2 Degree Machine List	2 Degree Machine List
15.0	81.3	151,000 *				16.0	81.6	151,000 *				17.0	81.9	125,800 *			
16.0	80.4	151,000 *				17.0	80.9	149,300 *				18.0	81.3	125,800 *			
17.0	79.6	149,400 *				18.0	80.2	146,500 *				19.0	80.7	125,800 *			
18.0	78.7	146,700 *				19.0	79.5	139,400 *				20.0	80.0	124,000 *			
19.0	77.9	139,800 *				20.0	78.8	131,800				22.0	78.7	112,500 *			
20.0	77.1	132,200				22.0	77.3	115,100				24.0	77.4	100,800			
22.0	75.4	115,400				24.0	75.8	101,000				26.0	76.1	89,100			
24.0	73.7	101,300	92,400			26.0	74.3	89,200	81,800			28.0	74.8	80,500	73,000 *		
26.0	72.0	89,600	82,800	68,700 *		28.0	72.8	80,500	74,100			30.0	73.5	72,800	66,900		
28.0	70.3	80,800	75,000	67,400 *		30.0	71.2	72,800	67,700	58,100 *		32.0	72.1	66,600	61,600	50,600 *	
30.0	68.5	73,000	68,500	65,000	53,600 *	32.0	69.7	66,600	62,200	57,100 *	46,400 *	34.0	70.8	61,600	56,900	49,600 *	
32.0	66.7	67,000	63,000	60,100	51,800 *	34.0	68.2	61,600	57,500	54,700	44,700 *	36.0	69.4	57,300	53,000	49,000 *	39,900 *
34.0	64.9	62,000	58,300	55,700	49,900 *	36.0	66.6	57,300	53,500	51,000	43,300 *	38.0	68.0	53,100	49,500	47,000	38,500 *
36.0	63.0	57,800	54,200	52,100	47,900 *	38.0	65.1	53,100	50,000	47,800	41,800 *	40.0	66.6	49,300	46,300	44,200	37,600 *
38.0	61.2	53,600	50,600	48,700	45,800	40.0	63.5	49,300	46,800	45,000	40,400 *	42.0	65.2	46,500	43,600	41,700	36,400 *
40.0	59.3	49,800	47,400	45,700	43,800	42.0	61.8	46,600	44,100	42,400	39,000 *	44.0	63.8	43,700	41,100	39,500	35,400 *
42.0	57.3	46,900	44,600	43,100	41,500	44.0	60.2	43,800	41,600	40,100	37,700	46.0	62.4	40,900	38,900	37,400	34,300
44.0	55.3	44,100	42,100	40,800	39,700	46.0	58.5	41,100	39,300	38,000	36,200	48.0	60.9	38,900	36,900	35,600	33,200
46.0	53.3	41,300	39,800	38,700	37,700	48.0	56.8	39,100	37,300	36,200	34,800	50.0	59.4	36,900	35,100	34,000	32,000
48.0	51.2	39,400	37,700	36,700	35,900	50.0	55.1	37,100	35,500	34,500	33,600	55.0	55.7	32,500	31,200	30,300	29,200
50.0	49.0	37,400	35,900	35,100	34,300	55.0	50.5	32,700	31,500	30,800	30,000	60.0	51.7	29,000	28,100	27,400	26,600
55.0	43.2	33,200	32,000	31,400	30,800	60.0	45.7	29,200	28,300	27,700	27,200	65.0	47.4	26,100	25,400	24,800	24,200
60.0	36.9	29,600	28,800	28,400	28,100	65.0	40.4	26,300	25,700	25,300	24,800	70.0	42.9	23,800	23,100	22,700	22,200
65.0	29.2	26,800	26,300 *	26,000 *	25,800 *	70.0	34.3	24,100	23,400	23,100	22,800	75.0	37.9	21,800	21,200	20,800	20,500
						75.0	26.9	22,100	21,500	21,300	21,100	80.0	32.2	20,100	19,600	19,300	19,100
												85.0	25.7	18,600	18,300	18,100	17,900
Reeves		6	4	4	4	Reeves		6	4	4	2	Reeves		5	4	4	2

Refer to notes on page 32.

CK1100G

SPECIFICATIONS

Barge

5 Counterweights (69,000 lbs) - 2 Carbody weights (31,800 lbs) - Crawlers in extended position.

100' Boom					110' Boom					120' Boom				
360° Rated Load (lbs)					360° Rated Load (lbs)					360° Rated Load (lbs)				
Load Radius (ft)	Boom Angle (deg)	0 Degree Machine List	1 Degree Machine List	2 Degree Machine List	Load Radius (ft)	Boom Angle (deg)	0 Degree Machine List	1 Degree Machine List	2 Degree Machine List	Load Radius (ft)	Boom Angle (deg)	0 Degree Machine List	1 Degree Machine List	2 Degree Machine List
19.0	81.6	125,600 *			20.0	81.8	100,800 *			22.0	81.6	98,700 *		
20.0	81.0	123,600 *			22.0	80.8	100,800 *			24.0	80.6	94,200 *		
22.0	79.9	112,200 *			24.0	79.7	96,500 *			26.0	79.6	88,000 *		
24.0	78.7	100,600			26.0	78.6	88,500 *			28.0	78.6	79,900		
26.0	77.5	88,900			28.0	77.6	80,200			30.0	77.7	72,200		
28.0	76.3	80,200			30.0	76.5	72,400			32.0	76.7	66,100		
30.0	75.1	72,400			32.0	75.4	66,300			34.0	75.7	61,100	53,000 *	
32.0	74.0	66,300	60,800		34.0	74.3	61,300	55,900 *		36.0	74.7	56,800	51,300	
34.0	72.8	61,300	56,300		36.0	73.2	57,000	51,900		38.0	73.7	52,500	47,900	
36.0	71.6	57,000	52,300	43,500 *	38.0	72.2	52,700	48,600		40.0	72.7	48,700	45,000	33,900 *
38.0	70.3	52,700	48,900	42,900 *	40.0	71.1	48,900	45,500	37,900 *	42.0	71.7	45,800	42,200	33,400 *
40.0	69.1	48,900	45,800	42,400 *	42.0	70.0	46,200	42,900	37,500 *	44.0	70.7	43,000	39,800	33,000 *
42.0	67.9	46,200	43,100	40,900 *	44.0	68.9	43,400	40,400	37,000 *	46.0	69.7	40,200	37,600	32,800 *
44.0	66.6	43,400	40,700	38,800	46.0	67.8	40,700	38,200	36,200 *	48.0	68.6	38,300	35,600	32,300 *
46.0	65.4	40,700	38,500	36,800	48.0	66.6	38,700	36,300	34,600	50.0	67.6	36,300	34,000	31,700 *
48.0	64.1	38,700	36,500	35,000	50.0	65.4	36,600	34,500	32,900	55.0	65.0	32,000	30,200	28,900
50.0	62.8	36,600	34,700	33,400	55.0	62.5	32,300	30,500	29,400	60.0	62.3	28,300	27,100	26,000
55.0	59.5	32,300	30,800	29,700	60.0	59.5	28,700	27,400	26,400	65.0	59.6	25,400	24,400	23,500
60.0	56.1	28,700	27,500	26,700	65.0	56.5	25,900	24,700	23,900	70.0	56.8	23,200	22,200	21,400
65.0	52.5	25,900	24,900	24,300	70.0	53.2	23,500	22,500	21,800	75.0	53.8	21,200	20,300	19,700
70.0	48.8	23,500	22,700	22,100	75.0	49.9	21,400	20,600	20,000	80.0	50.8	19,400	18,600	18,100
75.0	44.8	21,400	20,700	20,300	80.0	46.4	19,600	19,000	18,600	85.0	47.7	17,700	17,200	16,700
80.0	40.5	19,600	19,200	18,800	85.0	42.6	18,100	17,700	17,300	90.0	44.3	16,500	15,900	15,600
85.0	36.0	18,100	17,700	17,500	90.0	38.6	16,800	16,400	16,100	95.0	40.7	15,300	14,800	14,500
90.0	30.5	16,900	16,500	16,300	95.0	34.1	15,600	15,200	15,000	100.0	36.9	14,200	13,800	13,600
95.0	24.0	15,800	15,400	15,300	100.0	29.1	14,600	14,300	14,200	110.0	27.8	12,600	12,200	12,000
					105.0	23.2	13,770	13,500	13,300	115.0	22.2	11,840	11,500	11,900
Reeves 5 4 2 2					Reeves 4 4 2 2					Reeves 4 4 2 2				
130' Boom					140' Boom					150' Boom				
360° Rated Load (lbs)					360° Rated Load (lbs)					360° Rated Load (lbs)				
Load Radius (ft)	Boom Angle (deg)	0 Degree Machine List	1 Degree Machine List	2 Degree Machine List	Load Radius (ft)	Boom Angle (deg)	0 Degree Machine List	1 Degree Machine List	2 Degree Machine List	Load Radius (ft)	Boom Angle (deg)	0 Degree Machine List	1 Degree Machine List	2 Degree Machine List
24.0	81.3	85,100 *			24.0	81.9	72,900 *			26.0	81.7	62,200 *		
26.0	80.4	83,900 *			26.0	81.1	71,800 *			28.0	80.9	61,300 *		
28.0	79.5	78,200 *			28.0	80.3	70,800 *			30.0	80.1	60,400 *		
30.0	78.6	71,900			30.0	79.4	69,000 *			32.0	79.4	59,400 *		
32.0	77.7	65,900			32.0	78.6	64,700 *			34.0	78.6	57,200 *		
34.0	76.9	60,900			34.0	77.8	60,500			36.0	77.8	54,100 *		
36.0	75.9	56,600			36.0	76.9	56,200			38.0	77.0	51,000 *		
38.0	75.0	52,300	46,400 *		38.0	76.1	52,000			40.0	76.3	48,000		
40.0	74.1	48,400	44,500		40.0	75.2	48,200	41,500 *		42.0	75.5	45,200	37,100 *	
42.0	73.2	45,600	41,700		42.0	74.4	45,400	40,600 *		44.0	74.7	42,400	36,600 *	
44.0	72.2	42,800	39,400	29,700 *	44.0	73.5	42,600	38,900		46.0	73.9	39,600	35,800 *	
46.0	71.3	40,000	37,200	29,400 *	46.0	72.7	39,800	36,800		48.0	73.1	37,500	34,500	
48.0	70.4	38,000	35,300	29,100 *	48.0	71.8	37,800	34,900		50.0	72.3	35,500	32,800	23,300 *
50.0	69.4	36,000	33,600	28,700 *	50.0	71.0	35,800	33,200		55.0	70.3	31,200	29,000	22,700 *
55.0	67.1	31,600	29,700	27,900 *	55.0	68.8	31,400	29,400	25,100 *	60.0	68.2	27,600	25,800	22,000 *
60.0	64.6	28,100	26,600	25,500	60.0	66.6	27,800	26,200	24,500 *	65.0	66.2	24,800	23,300	21,600 *
65.0	62.2	25,200	24,100	23,100	65.0	64.3	25,000	23,500	22,400 *	70.0	64.0	22,400	21,100	20,100 *
70.0	59.6	22,900	21,900	21,100	70.0	62.0	22,600	21,300	20,500	75.0	61.9	20,300	19,200	18,300
75.0	57.0	20,900	20,000	19,300	75.0	59.7	20,500	19,500	18,700	80.0	59.6	18,500	17,600	17,000
80.0	54.3	19,000	18,300	17,700	80.0	57.3	18,700	17,800	17,200	85.0	57.4	17,000	16,200	15,500
85.0	51.6	17,500	16,900	16,400	85.0	54.8	17,200	16,400	15,800	90.0	55.2	15,700	14,900	14,400
90.0	48.7	16,100	15,700	15,300	90.0	52.2	15,900	15,200	14,700	95.0	52.8	14,400	13,800	13,300
95.0	45.6	15,000	14,600	14,200	95.0	49.5	14,600	14,100	13,700	100.0	50.3	13,400	12,800	12,500
100.0	42.4	14,000	13,600	13,300	100.0	46.8	13,600	13,100	12,800	110.0	45.1	11,700	11,200	10,900
110.0	35.4	12,100	11,900	11,700	110.0	40.8	11,900	11,400	11,200	120.0	39.3	10,300	9,900	9,600
120.0	26.6	10,800	10,600	10,500	120.0	34.0	10,300	10,100	9,900	130.0	32.8	8,900	8,800	8,600
125.0	21.3	10,230	9,900		130.0	25.7	9,200	9,100	8,900	140.0	24.3	8,000	7,800	7,600
					135.0	20.5	8,830							
Reeves 4 2 2 2					Reeves 4 2 2 2					Reeves 4 2 2 2				

Refer to notes on page 32.



CK1100G

SPECIFICATIONS

Barge

5 Counterweights (69,000 lbs) - 2 Carbody weights (31,800 lbs) - Crawlers in extended position.

160' Boom						170' Boom						180' Boom					
360° Rated Load (lbs)						360° Rated Load (lbs)						360° Rated Load (lbs)					
Load Radius (ft)	Boom Angle (deg.)	0 Degree Machine List	1 Degree Machine List	2 Degree Machine List	2 Degree Machine List	Load Radius (ft)	Boom Angle (deg.)	0 Degree Machine List	1 Degree Machine List	2 Degree Machine List	2 Degree Machine List	Load Radius (ft)	Boom Angle (deg.)	0 Degree Machine List	1 Degree Machine List	2 Degree Machine List	2 Degree Machine List
28.0	81.5	50,200 *				30.0	81.3	44,500 *				30.0	81.8	39,300 *			
30.0	80.8	50,100 *				32.0	80.7	43,900 *				32.0	81.2	38,800 *			
32.0	80.1	49,700 *				34.0	80.0	43,200 *				34.0	80.5	38,200 *			
34.0	79.4	49,200 *				36.0	79.3	42,500 *				36.0	79.9	37,600 *			
36.0	78.6	48,500 *				38.0	78.6	41,900 *				38.0	79.2	37,000 *			
38.0	77.9	47,800 *				40.0	77.9	41,200 *				40.0	78.6	36,400 *			
40.0	77.2	46,600 *				42.0	77.2	40,600 *				42.0	77.9	35,800 *			
42.0	76.4	44,300 *				44.0	76.5	40,000 *				44.0	77.2	35,100 *			
44.0	75.6	42,100 *	32,200 *			46.0	75.8	39,300 *				46.0	76.6	34,500 *			
46.0	74.9	39,800 *	31,700 *			48.0	75.1	37,400 *	28,400 *			48.0	75.9	33,900 *			
48.0	74.1	37,800 *	31,300 *			50.0	74.4	35,400 *	28,100 *			50.0	75.3	33,300 *			
50.0	73.4	35,800 *	31,000 *			55.0	72.6	31,200 *	27,100 *	17,700 *		55.0	73.7	30,800 *	24,200 *		
55.0	71.5	31,400 *	28,900 *	20,000 *		60.0	70.9	27,600 *	25,400 *	17,300 *		60.0	72.0	27,400 *	22,900 *	15,300 *	
60.0	69.6	27,800 *	26,000 *	19,300 *		65.0	69.1	24,600 *	23,000 *	16,900 *		65.0	70.3	24,400 *	21,800 *	15,100 *	
65.0	67.7	25,000 *	23,400 *	18,900 *	14,400 *	70.0	67.3	22,300 *	20,900 *	16,400 *	12,400 *	70.0	68.6	21,900 *	20,400 *	14,600 *	10,800 *
70.0	65.8	22,600 *	21,200 *	18,500 *	14,000 *	75.0	65.4	20,300 *	19,000 *	16,000 *	12,200 *	75.0	66.9	19,900 *	18,700 *	14,200 *	10,600 *
75.0	63.8	20,500 *	19,300 *	18,000 *	13,700 *	80.0	63.5	18,500 *	17,400 *	15,600 *	11,800 *	80.0	65.2	18,100 *	17,100 *	13,800 *	10,400 *
80.0	61.8	18,700 *	17,700 *	16,900 *	13,400 *	85.0	61.6	16,800 *	16,000 *	15,300 *	11,500 *	85.0	63.4	16,600 *	15,700 *	13,500 *	10,000 *
85.0	59.7	17,000 *	16,300 *	15,600 *	13,100 *	90.0	59.7	15,400 *	14,700 *	14,000 *	11,300 *	90.0	61.6	15,200 *	14,400 *	12,900 *	9,700 *
90.0	57.6	15,700 *	15,000 *	14,300 *	12,800 *	95.0	57.8	14,300 *	13,600 *	13,200 *	11,100 *	95.0	59.8	14,000 *	13,200 *	12,200 *	9,500 *
95.0	55.4	14,500 *	13,900 *	13,500 *	12,400 *	100.0	55.8	13,300 *	12,600 *	12,100 *	10,800 *	100.0	57.9	12,900 *	12,300 *	11,600 *	9,300 *
100.0	53.2	13,500 *	12,900 *	12,400 *	12,000 *	110.0	51.5	11,500 *	10,900 *	10,600 *	10,100 *	110.0	54.0	11,100 *	10,600 *	10,300 *	8,500 *
110.0	48.6	11,700 *	11,100 *	10,900 *	10,600 *	120.0	47.0	9,800 *	9,600 *	9,300 *	9,000 *	120.0	49.9	9,600 *	9,100 *	8,800 *	7,700 *
120.0	43.6	10,100 *	9,800 *	9,600 *	9,300 *	130.0	42.2	8,700 *	8,400 *	8,200 *	8,000 *	130.0	45.6	8,500 *	8,000 *	7,700 *	6,900 *
130.0	38.1	8,900 *	8,600 *	8,500 *	8,300 *	140.0	36.8	7,700 *	7,300 *	7,100 *	7,000 *	140.0	40.9	7,400 *	7,000 *	6,900 *	6,000 *
140.0	31.6	7,900 *	7,800 *	7,600 *	7,500 *	150.0	30.5	6,800 *	6,500 *	6,400 *	6,200 *	150.0	35.7	6,500 *	6,200 *	6,000 *	5,000 *
150.0	23.7	7,100 *	6,900 *	6,800 *	6,700 *	160.0	23.2	5,900 *	5,800 *	5,800 *	5,100 *	160.0	29.7	5,600 *	5,400 *	5,000 *	4,200 *
												165.0	26.5	5,100 *	5,100 *	4,400 *	3,600 *
Reeves	2		2	2	2	Reeves	2	2	2	2		Reeves	2	2	2	2	
190' Boom						200' Boom											
360° Rated Load (lbs)						360° Rated Load (lbs)											
Load Radius (ft)	Boom Angle (deg.)	0 Degree Machine List	1 Degree Machine List	2 Degree Machine List	2 Degree Machine List	Load Radius (ft)	Boom Angle (deg.)	0 Degree Machine List	1 Degree Machine List	2 Degree Machine List	2 Degree Machine List						
32.0	81.6	34,400 *				34.0	81.5	30,300 *									
34.0	81.0	33,800 *				36.0	80.9	29,700 *									
36.0	80.4	33,300 *				38.0	80.3	29,200 *									
38.0	79.8	32,700 *				40.0	79.7	28,700 *									
40.0	79.2	32,200 *				42.0	79.1	28,200 *									
42.0	78.6	31,700 *				44.0	78.6	27,700 *									
44.0	78.0	31,100 *				46.0	78.0	27,300 *									
46.0	77.4	30,600 *				48.0	77.4	26,800 *									
48.0	76.7	30,100 *				50.0	76.8	26,300 *									
50.0	76.1	29,600 *				55.0	75.3	24,900 *									
55.0	74.5	28,100 *	21,700 *			60.0	73.8	23,200 *	18,200 *								
60.0	73.0	26,200 *	20,600 *			65.0	72.4	21,500 *	17,100 *	11,700 *							
65.0	71.4	24,000 *	19,500 *	13,300 *		70.0	70.9	20,000 *	16,100 *	11,300 *							
70.0	69.8	21,800 *	18,400 *	13,100 *		75.0	69.3	18,500 *	15,100 *	11,000 *							
75.0	68.2	19,900 *	17,300 *	12,700 *	9,200 *	80.0	67.8	17,100 *	14,100 *	10,600 *	7,700 *						
80.0	66.5	18,000 *	16,200 *	12,400 *	9,000 *	85.0	66.2	15,900 *	13,300 *	10,100 *	7,500 *						
85.0	64.9	16,400 *	15,300 *	11,900 *	8,800 *	90.0	64.6	14,700 *	12,400 *	9,500 *	7,200 *						
90.0	63.2	15,000 *	14,100 *	11,300 *	8,600 *	95.0	63.0	13,500 *	11,700 *	9,000 *	7,000 *						
95.0	61.5	13,900 *	13,000 *	10,600 *	8,400 *	100.0	61.4	12,400 *	11,000 *	8,400 *	6,800 *						
100.0	59.7	12,900 *	12,000 *	10,000 *	8,200 *	110.0	58.1	10,600 *	9,500 *	7,400 *	6,000 *						
110.0	56.2	11,000 *	10,400 *	8,900 *	7,400 *	120.0	54.6	9,200 *	8,200 *	6,500 *	5,200 *						
120.0	52.5	9,400 *	9,100 *	7,900 *	6,500 *	130.0	51.1	7,800 *	7,100 *	5,600 *	4,500 *						
130.0	48.5	8,200 *	7,800 *	6,800 *	5,700 *	140.0	47.2	6,500 *	5,900 *	4,600 *	3,700 *						
140.0	44.3	7,200 *	6,800 *	5,900 *	4,900 *	150.0	43.1	5,200 *	4,900 *	3,700 *	3,100 *						
150.0	39.7	6,300 *	5,900 *	5,100 *	4,100 *	155.0	41.0	4,650 *	4,400 *	3,500 *							
160.0	34.8	5,300 *	5,100 *	4,000 *	3,400 *												
165.0	32.1	4,650 *	4,600 *	3,600 *													
Reeves	2		2	2	2	Reeves	2	2	2	2							

Refer to notes on page 32.



CK1100G SPECIFICATIONS

This image shows a full page of blank, lined paper. It features approximately 20 evenly spaced horizontal blue or grey lines across its entire width. The lines are uniform in thickness and spacing, providing a template for writing. There are no margins, text, or other markings on the page.



Note: This catalog may contain photographs of machines with specifications, attachments and optional equipment not certified for operation in your country. Please consult KOBELCO for those items you may require. Due to our policy of continual product improvements all designs and specifications are subject to change without advance notice.

Copyright by KOBELCO CRANES CO., LTD. No part of this catalog may be reproduced in any manner without notice.

KOBELCO CRANES CO., LTD.

17-1, Higashigotanda 2-chome, Shinagawa-ku, Tokyo 141-8626 JAPAN

Tel: +81-3-5789-2130 Fax: +81-3-5789-3372

URL: <http://www.kobelco-cranes.com/>

Inquiries To:

KOBELCO CRANES NORTH AMERICA, INC.

10845 Train Court, Houston, Texas 77041, USA

Tel: +1-713-856-5755 Fax: +1-713-856-9072

URL: <http://www.kobelcocranesnorthamerica.com/>

Bulletin No. CK1100G_SPEC_US3

3142013 Printed in USA