



Crane Rental • Heavy Machinery Moving • Project Management

[sales@reliablecraneservice.com](mailto:sales@reliablecraneservice.com) • 702-525-0840 or 702-400-2516



## Industrial Mobile Cranes

**FOR REFERENCE USE ONLY!**

Please consult Reliable Crane Service for more information.

702-400-2516 or 702-525-0840  
[sales@reliablecraneservice.com](mailto:sales@reliablecraneservice.com)

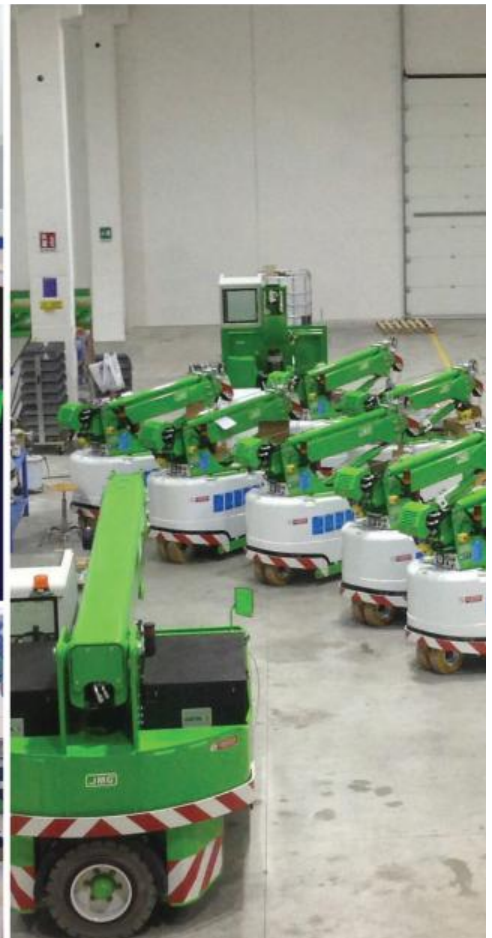
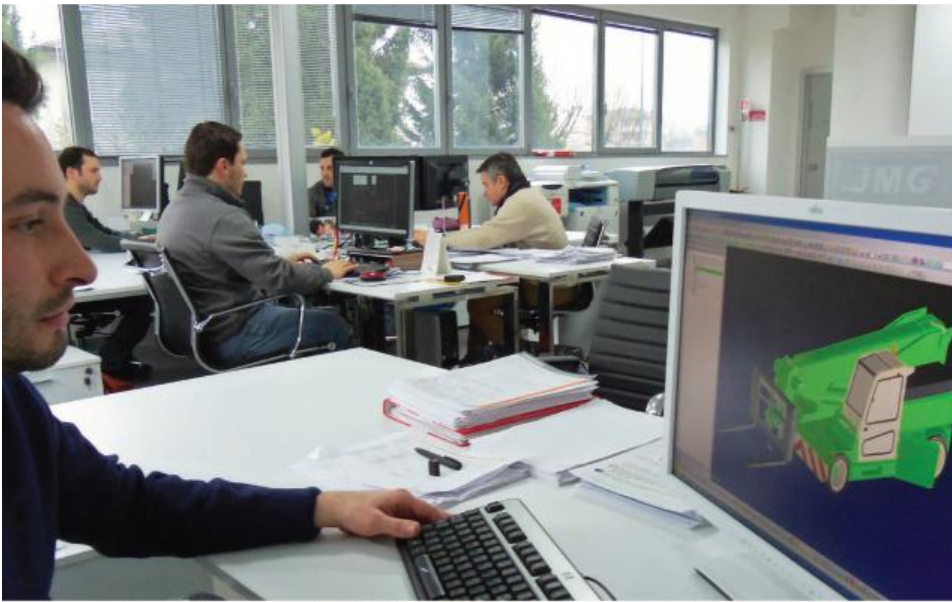
[www.reliablecraneservice.com](http://www.reliablecraneservice.com)





Crane Rental • Heavy Machinery Moving • Project Management

sales@reliablecraneservice.com • 702-525-0840 or 702-400-2516



**FOR REFERENCE USE ONLY!**  
Please consult Reliable Crane Service for more information.

702-400-2516 or 702-525-0840  
sales@reliablecraneservice.com

[www.reliablecraneservice.com](http://www.reliablecraneservice.com)





**1.** JMG Cranes srl is part of COMPART ITALIA srl, a worldwide leading group in the industrial mobile cranes which includes I.M.C. srl – focused on Service, Spare Parts and Training and LEVERMAC srl, originally dedicated to rental activities. JMG Cranes was founded in 2007 in Milan by a well known business manager with over 20 years of experience in the industrial mobile crane market, Mr Maurizio Manzini.

Mr Manzini created a team which included the most skilled engineers and technicians in the pick and carry cranes world and their aim was to develop an innovative product: collecting their knowledge from the past, with an eye forward into the future.

The company focused immediately on technical innovation and Mechanical Engineers, Electrical Engineers, Product designers were dedicated to the creation of a unique full range of Electric Pick and Carry Cranes.

The result was achieved and a compact, versatile and state of art serie of machines with max capacity from 2 to 100 tonnes cranes was set on the market.

JMG Cranes' aim is to combine best performances with smart design: the product designers focused on the better distribution of the loads while respecting the lines, these cranes are projected to be easy to maintain, to transport and to use.

Product Designers and Engineers worked together to reach an industrialized production but still customer's needs are the first concern.

That's why JMG Cranes are so versatile and customized versions are still an important percentage of the manufacturing: the R&D Department studies tailor made solutions to support customers who have special requirements and options like radio remote control, forks or man basket are available on every model.

From the frame to the choice of only first class the components, from the high quality painting, to the electronic devices, customers purchasing a JMG Cranes are aware their choice makes the difference.

Since its foundation, facilities have doubled and in early 2013, a new manufacturing building has been opened to face the growing demand. The modern plant covers 6000 square meters and inspection tests are carried out by trained technicians in a dedicated area.

In few years, the huge quality of products lead JMG Cranes to create a strategic Sales and After Sales Network which covers 3 continents: Europe, Asia and America.

Customers worldwide learn everyday how to work comfortably in tight spaces and, next to the traditional Machinery Moving, Industrial Maintenance, Aerospace, Food, Tires and Automotive, some new applications came out recently, because of the increasing need of respecting the environment.

JMG Cranes, the power of compactness.

**2.** Pick and Carry Cranes are mobile cranes with no outriggers and are designed to lift the load and carry it to its destination. They can be a valid alternative to traditional forklifts but, in some cases, they can also avoid the use of heavy lifting cranes, simply reaching the load very close.

Thanks to their reduced dimensions, small radius and light weights, these cranes are perfect to be used even in clean environments. Compared to the most common equipments on the market, like telehandlers or equivalent in capacity forklift trucks, big cranes or carry deck cranes, there is always an advantage in using a pick and carry electric crane.

Pick and Carry cranes have displaced the work usually completed by smaller truck cranes as the set up time is much quicker, cheaper more safety.

The JMG Pick and Carry Cranes capacity range is 2 to 100 tonnes maximum lift, like no one in the market.

Battery powered, they are very agile and versatility is granted by options like forks, winch, jibs, man basket.



Crane Rental • Heavy Machinery Moving • Project Management

[sales@reliablecraneservice.com](mailto:sales@reliablecraneservice.com) • 702-525-0840 or 702-400-2516



**MC20** 4.400 lb **6**

---



**MC20S** 5.500 lb **7**

---

# PEDESTRIAN CRANES

**FOR REFERENCE USE ONLY!**

Please consult Reliable Crane Service for more information.

702-400-2516 or 702-525-0840  
[sales@reliablecraneservice.com](mailto:sales@reliablecraneservice.com)

[www.reliablecraneservice.com](http://www.reliablecraneservice.com)

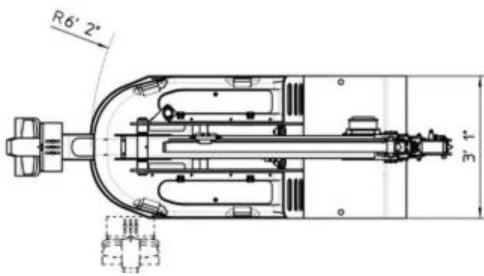
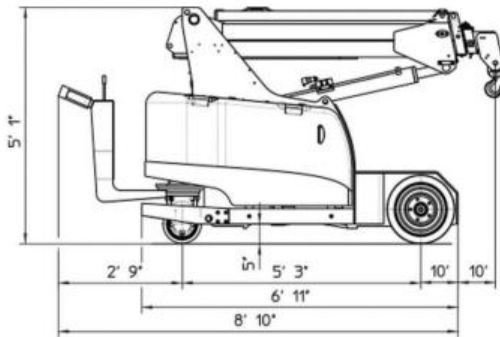
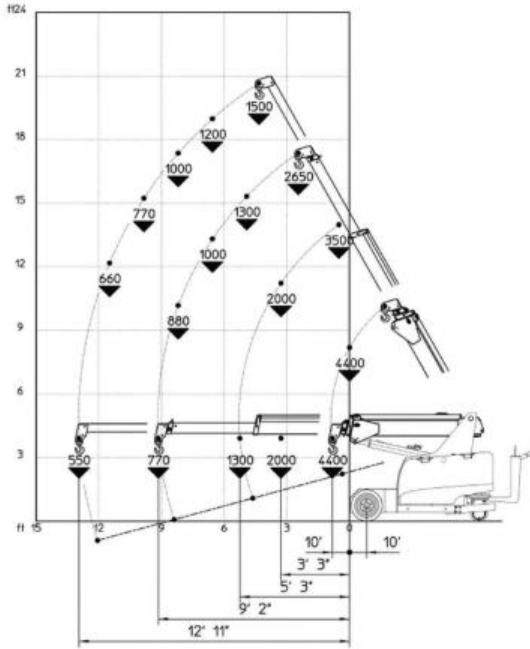




PICK & CARRY CRANES

# MC20

4.400 lb



- FRAME:** JMG designed and manufactured, box type, torsion resistant design of high strength structural steel
- BOOM:** Made of moulded and welded quality steel plate, comprised of a base unit, a hydraulic telescopic system and two manual extensions
- MOTOR:** 1 Electric motor 2,6 kW 24 V AC
- BATTERY:** 24 V 420 Ah battery charging indicator
- TRANSMISSION:** Rear axle by reducer
- WHEELS:** Front: 2 Superelastic 18x7x8"  
Rear: 1 Polyurethane 255/80
- BRAKING:** Automatic on the rear wheel
- STEERING:** Steering on the rear wheel. Max. steering angle  $\pm 90^\circ$
- ELECTRIC PUMP:** 3 kW 24 V DC Motor
- HYDRAULIC SYSTEM:** Hydraulic system powered by a silenced gear pump. Actuators controlled by lever distributor. Filter and safety valve. 22 MPa max. working pressure
- SAFETY DEVICES:** Electronic load moment indicator
- OPTIONAL EQUIPMENT:** Hydraulic winch - High speed winch - Jib - (at extra charge)  
Non-marking wheels - Hydraulic boom with manual extension - Man basket - Hydraulic chain hoist - Cable remote control - Radio remote control

<b>CRANE CLASSIFICATION ACCORDING TO UNI ISO 4301-1</b>	A3
<b>EU STANDARD CE</b>	2006/42 CE MD 2004/108 CE EMC 2006/95 CE LVD 2000/14/CE And subsequent modifications
<b>REFERENCE STANDARDS</b>	EN13000:2010 / UNI ISO 4301-2:2011 ANSI/ASME B30.5 - 2011 And subsequent modifications
<b>TRACTION</b>	Electric
<b>BOOM ACTIVATION</b>	Hydraulic
<b>POWER TYPE</b>	Electric battery
<b>MAX. CAPACITY (lb)</b>	4400
<b>TOTAL WEIGHT (lb)</b>	4400
<b>BOOM ANGLE TOPSIDE (°)</b>	60
<b>BOOM ANGLE DOWNSIDE (°)</b>	-15

Battery powered

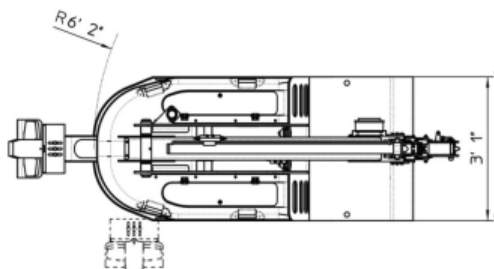
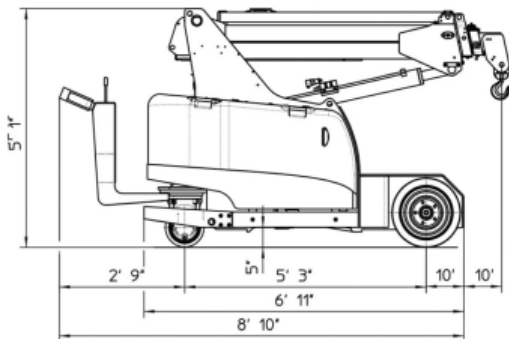
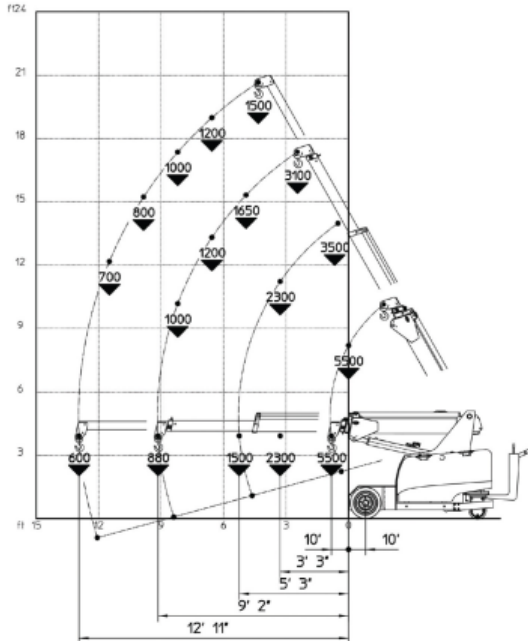
**FOR REFERENCE USE ONLY!**  
Please consult Reliable Crane Service for more information.

**702-400-2516 or 702-525-0840**  
sales@reliablecraneservice.com



PICK & CARRY CRANES

# MC20S 5.500 lb



ft

- FRAME:** JMG designed and manufactured, box type, torsion resistant design of high strength structural steel.
- BOOM:** Made of moulded and welded quality steel plate, comprised of a base unit, a hydraulic telescopic system and two manual extensions
- MOTOR:** 1 Electric motor 2,6 kW 24 V AC
- BATTERY:** 24 V 420 Ah battery charging indicator
- TRANSMISSION:** Rear axle by reducer
- WHEELS:** Front: 2 Superelastic 18x7x8"  
Rear: 1 Polyurethane 255/80
- BRAKING:** Automatic on the rear wheel and parking brake on front wheels
- STEERING:** Steering on the rear wheel. Max. steering angle ± 90°
- ELECTRIC PUMP:** 3 kW 24 V DC Motor
- HYDRAULIC SYSTEM:** Hydraulic system powered by a silenced gear pump. Actuators controlled by electro-proportional distributor with remote radio controller. Filter and safety valve. 22 MPa max. working pressure
- SAFETY DEVICES:** Electronic load moment indicator
- OPTIONAL EQUIPMENT:** Hydraulic winch - High speed winch - Jib - (at extra charge)  
Non-marking wheels - Hydraulic boom with manual extension - Man basket - Hydraulic chain hoist - Cable remote control - Radio remote control

<b>CRANE CLASSIFICATION ACCORDING TO UNI ISO 4301-1</b>	A3
<b>EU STANDARD CE</b>	2006/42 CE MD 2004/108 CE EMC 2006/95 CE LVD 2000/14/CE And subsequent modifications
<b>REFERENCE STANDARDS</b>	EN13000:2010 / UNI ISO 4301-2:2011 ANSI/ASME B30.5 - 2011 And subsequent modifications
<b>BOOM ACTIVATION</b>	Hydraulic
<b>POWER TYPE</b>	Electric battery
<b>MAX. CAPACITY (lb)</b>	5500
<b>TOTAL WEIGHT (lb)</b>	5500
<b>BOOM ANGLE TOPSIDE (°)</b>	60
<b>BOOM ANGLE DOWNSIDE (°)</b>	-15

Battery powered

**FOR REFERENCE USE ONLY!**

Please consult Reliable Crane Service for more information.

702-400-2516 or 702-525-0840  
sales@reliablecraneservice.com



**MC22** 4.800 lb 11

---



**MC25** 5.500 lb 13

---



**MC32** 7.000 lb 16

---



**MC40S** 9.900 lb 17

---

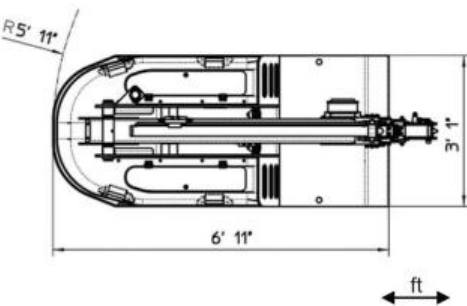
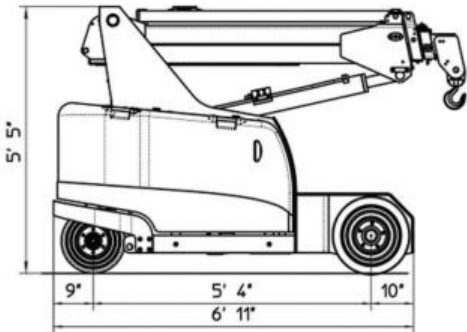
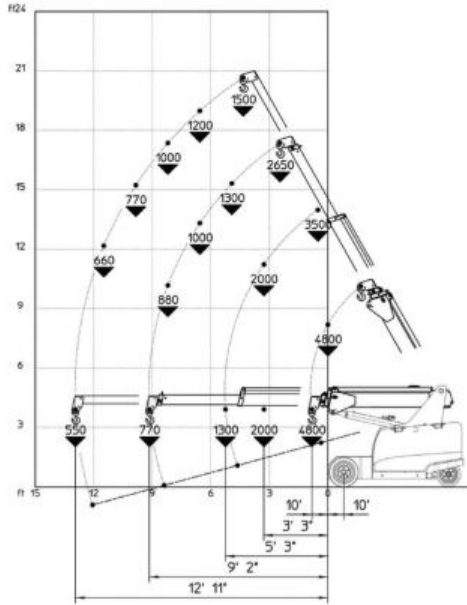
**RADIO REMOTE CONTROLLED**





PICK & CARRY CRANES

# MC22 4.800 lb



- FRAME:** JMG designed and manufactured, box type, torsion resistant design of high strength structural steel.
- BOOM:** Made of moulded and welded quality steel plate, comprised of a base unit, a hydraulic telescopic system and two manual extensions
- MOTOR:** 2 Electric motors 2 kW 24 V AC
- BATTERY:** 24 V 420 Ah battery charging indicator
- TRANSMISSION:** n.2 wheels drive at the front side.
- WHEELS:** Front: 2 Superelastic 18x7x8"  
Rear: 1 Superelastic 15x4 1/2x8"
- BRAKING:** Automatic on the rear wheels
- STEERING:** Steering on the rear wheels by electric motor. Max. steering angle ± 90°
- ELECTRIC PUMP:** 3 kW 24 V DC Motor
- HYDRAULIC SYSTEM:** Hydraulic system powered by a silenced gear pump. Actuators controlled by electro-proportional distributor with joystick. Filter and safety valve. 22 MPa max. working pressure
- SAFETY DEVICES:** Electronic load moment indicator
- OPTIONAL EQUIPMENT:** Hydraulic winch - High speed winch - Jib - (at extra charge)  
Non-marking wheels - Hydraulic boom with manual extension - Man basket - Hydraulic chain hoist

<b>CRANE CLASSIFICATION ACCORDING TO UNI ISO 4301-1</b>	A3
<b>EU STANDARD CE</b>	2006/42 CE MD 2004/108 CE EMC 2006/95 CE LVD 2000/14/CE And subsequent modifications
<b>REFERENCE STANDARDS</b>	EN13000:2010 / UNI ISO 4301-2:2011 ANSI/ASME B30.5 - 2011 And subsequent modifications
<b>TRACTION</b>	Electric
<b>BOOM ACTIVATION</b>	Hydraulic
<b>POWER TYPE</b>	Electric battery
<b>MAX. CAPACITY (lb)</b>	4800
<b>TOTAL WEIGHT (lb)</b>	4500
<b>BOOM ANGLE TOPSIDE (°)</b>	60
<b>BOOM ANGLE DOWNSIDE (°)</b>	-15

Battery powered

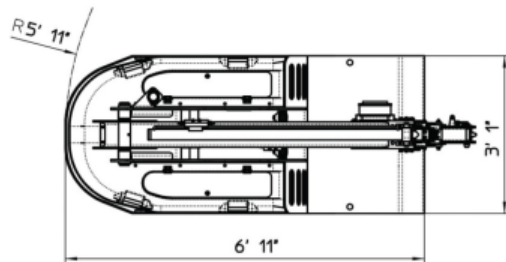
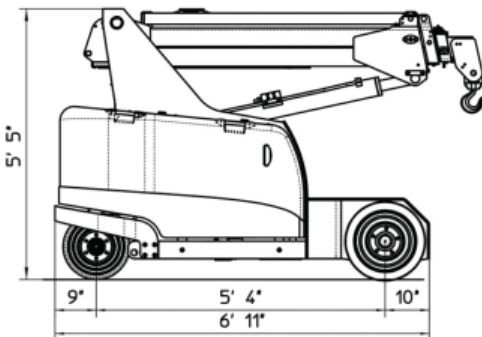
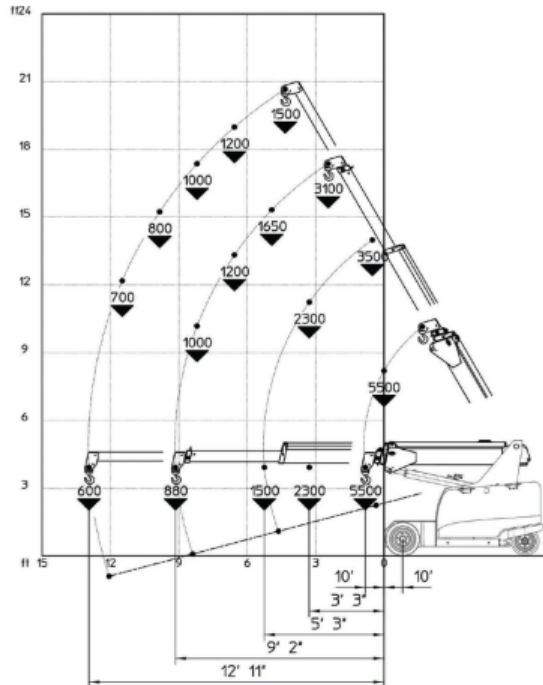
**FOR REFERENCE USE ONLY!**  
Please consult Reliable Crane Service for more information.

**702-400-2516 or 702-525-0840**  
sales@reliablecraneservice.com





# MC25 5.500 lb



ft

- FRAME:** JMG designed and manufactured, box type, torsion resistant design of high strength structural steel.
- BOOM:** Made of moulded and welded quality steel plate, comprised of a base unit, a hydraulic telescopic system and two manual extensions
- MOTOR:** 2 Electric motors 2 kW 24 V AC
- BATTERY:** 24 V 420 Ah battery charging indicator
- TRANSMISSION:** n.2 wheels drive at the front side.
- WHEELS:** Front: 2 Superelastic 18x7x8"  
Rear: 2 Superelastic 15x4 1/2x 8
- BRAKING:** Automatic on the rear wheels
- STEERING:** Steering on the rear wheels by electric motor. Max. steering angle ± 90°
- TRAVEL CONTROL:** Operated by radio remote console
- ELECTRIC PUMP:** 3 kW 24 V DC Motor
- HYDRAULIC SYSTEM:** Hydraulic system powered by a silenced gear pump. Actuators controlled by electro-proportional distributor with joystick. Filter and safety valve. 22 MPa max. working pressure
- SAFETY DEVICES:** Electronic load moment indicator
- OPTIONAL EQUIPMENT:** Hydraulic winch - High speed winch - Jib - (at extra charge)  
Non-marking wheels - Hydraulic boom with manual extension - Man basket - Hydraulic chain hoist

<b>CRANE CLASSIFICATION ACCORDING TO UNI ISO 4301-1</b>	A3
<b>EU STANDARD CE</b>	2006/42 CE MD 2004/108 CE EMC 2006/95 CE LVD 2000/14/CE And subsequent modifications
<b>REFERENCE STANDARDS</b>	EN13000:2010 / UNI ISO 4301-2:2011 ANSI/ASME B30.5 - 2011 And subsequent modifications
<b>TRACTION</b>	Electric
<b>BOOM ACTIVATION</b>	Hydraulic
<b>POWER TYPE</b>	Electric battery
<b>MAX. CAPACITY (lb)</b>	5500
<b>TOTAL WEIGHT (lb)</b>	5500
<b>BOOM ANGLE TOPSIDE (°)</b>	60
<b>BOOM ANGLE DOWNSIDE (°)</b>	-15



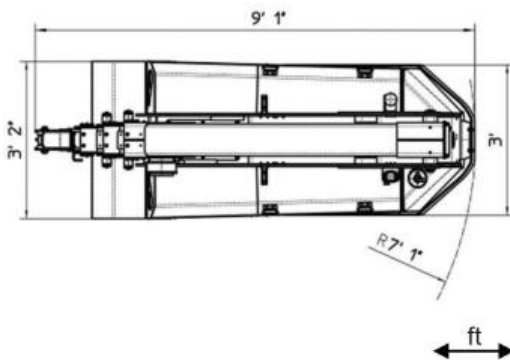
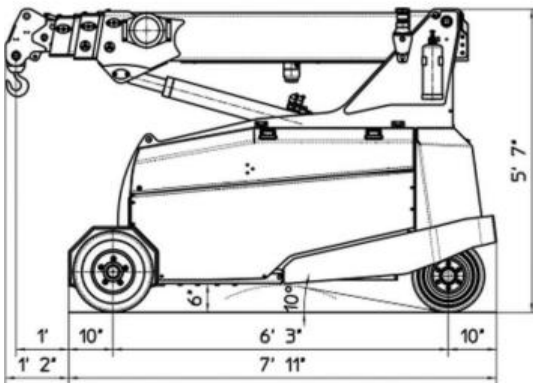
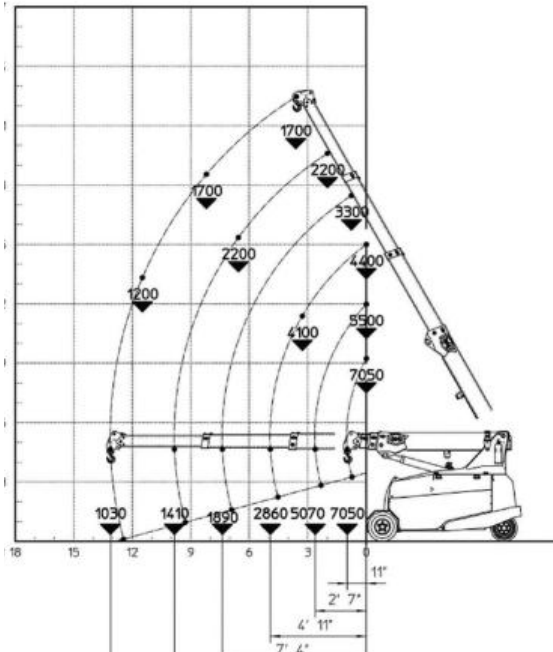
**FOR REFERENCE USE ONLY!**  
Please consult Reliable Crane Service for more information.

**702-400-2516 or 702-525-0840**  
**sales@reliablecraneservice.com**



# PICK & CARRY CRANES

# MC32 7.000 lb



- FRAME:** JMG designed and manufactured, box type, torsion resistant design of high strength structural steel.
- BOOM:** Made of moulded and welded quality steel plate, comprised of a base unit, and three hydraulic extensions
- MOTOR:** 2 Electric motors 3 kW 48 V AC
- BATTERY:** 48 V 500 Ah battery charging indicator
- TRANSMISSION:** n.2 wheels drive at the front side.
- WHEELS:** Front: 2 Superelastic 200/50-10"  
Rear wheels 16x6-8"
- BRAKING:** Automatic on the rear wheels
- STEERING:** Steering on the rear wheels by electric motor. Max. steering angle  $\pm 90^\circ$
- TRAVEL CONTROL:** Operated by radio remote console
- ELECTRIC PUMP:** 9 kW 48 V DC Motor
- HYDRAULIC SYSTEM:** Hydraulic system powered by a silenced gear pump. Actuators controlled by electro-proportional distributor with joystick. Filter and safety valve. 22 MPa max. working pressure
- SAFETY DEVICES:** Electronic load moment indicator
- OPTIONAL EQUIPMENT:** Hydraulic winch - Jib - Non-marking wheels - (at extra charge)  
Man basket - Hydraulic chain hoist

<b>CRANE CLASSIFICATION ACCORDING TO UNI ISO 4301-1</b>	A3
<b>EU STANDARD CE</b>	2006/42 CE MD 2004/108 CE EMC 2006/95 CE LVD 2000/14/CE And subsequent modifications
<b>REFERENCE STANDARDS</b>	EN13000:2010 / UNI ISO 4301-2:2011 ANSI/ASME B30.5 - 2011 And subsequent modifications
<b>TRACTION</b>	Electric
<b>BOOM ACTIVATION</b>	Hydraulic
<b>POWER TYPE</b>	Electric battery
<b>MAX. CAPACITY (lb)</b>	7000
<b>TOTAL WEIGHT (lb)</b>	6750
<b>BOOM ANGLE TOPSIDE (°)</b>	60
<b>BOOM ANGLE DOWNSIDE (°)</b>	-15

Battery powered

**FOR REFERENCE USE ONLY!**  
Please consult Reliable Crane Service for more information.

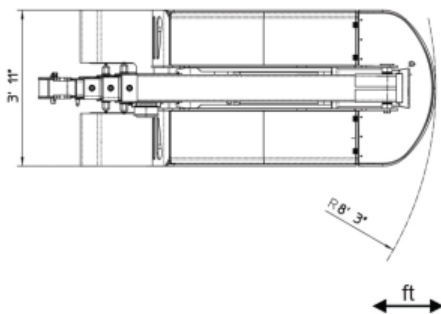
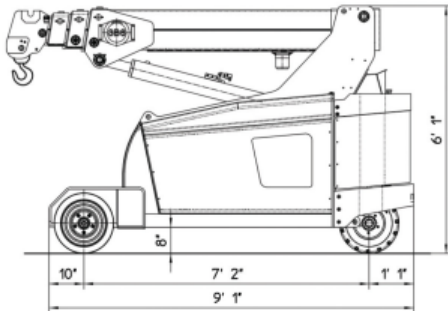
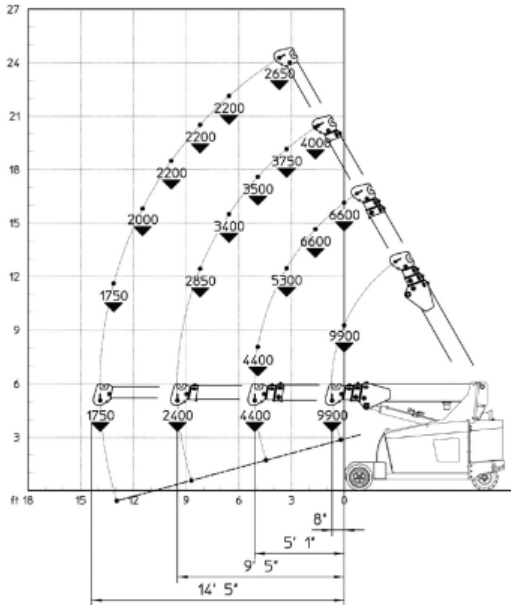
**702-400-2516 or 702-525-0840**  
**sales@reliablecraneservice.com**





PICK & CARRY CRANES

# MC40S 9.900 lb



- FRAME:** JMG designed and manufactured, box type, torsion resistant design of high strength structural steel.
- BOOM:** Made of moulded and welded quality steel plate, comprised of a base unit and three telescopic elements
- TRACTION MOTOR:** Electric motor 5 kW 48 V AC, insulation class H
- MOTOR PUMP:** Electric motor 9 kW 48 V AC, insulation class H
- BATTERY:** 48 V 560 Ah
- POWER DRIVE:** Electronic speed control, MOSFET type
- WHEELS:** Front wheels 18x7-8"  
Rear: 1 Superelastic 200/50-10"
- BRAKING:** Automatic on all wheels (front and rear)
- STEERING:** Steering on the rear wheels by electric motor. Max. steering angle  $\pm 90^\circ$
- TRAVEL CONTROL:** Operated by radio remote console
- HYDRAULIC SYSTEM:** Hydraulic system powered by a silenced gear pump. Actuators controlled by electro-proportional distributor with joystick. Filter and safety valve. 22 MPa max. working pressure
- SAFETY DEVICES:** Electronic load moment indicator
- OPTIONAL EQUIPMENT:** Hydraulic winch - Jib - Non-marking wheels - (at extra charge)  
Man basket - Hydraulic chain hoist

<b>CRANE CLASSIFICATION ACCORDING TO UNI ISO 4301-1</b>	A3
<b>EU STANDARD CE</b>	2006/42 CE MD 2004/108 CE EMC 2006/95 CE LVD 2000/14/CE And subsequent modifications
<b>REFERENCE STANDARDS</b>	EN13000:2010 / UNI ISO 4301-2:2011 ANSI/ASME B30.5 - 2011
<b>TRACTION</b>	Electric
<b>BOOM ACTIVATION</b>	Hydraulic
<b>POWER TYPE</b>	Electric battery
<b>MAX. CAPACITY (lb)</b>	9900
<b>TOTAL WEIGHT (lb)</b>	10560
<b>BOOM ANGLE TOPSIDE (°)</b>	60
<b>BOOM ANGLE DOWNSIDE (°)</b>	-15



**FOR REFERENCE USE ONLY!**

Please consult Reliable Crane Service for more information.

702-400-2516 or 702-525-0840  
sales@reliablecraneservice.com



# PICK & CARRY CRANES



**MC45** 9.900 lb 23



**MC60** 13.200 lb 25



**MC85** 18.700 lb 28



**MC110** 24.200 lb 29



**MC160** 35.300 lb 31



**MC220** 48.500 lb 33



**MC300** 66.000 lb 35



**MC450** 99.200 lb 37



**MC500** 110.000 lb 41



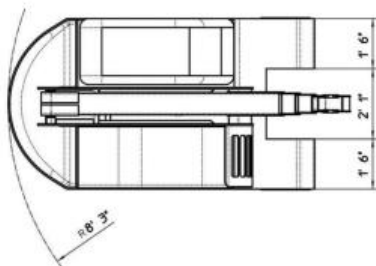
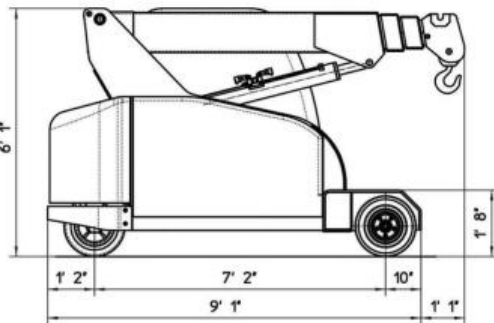
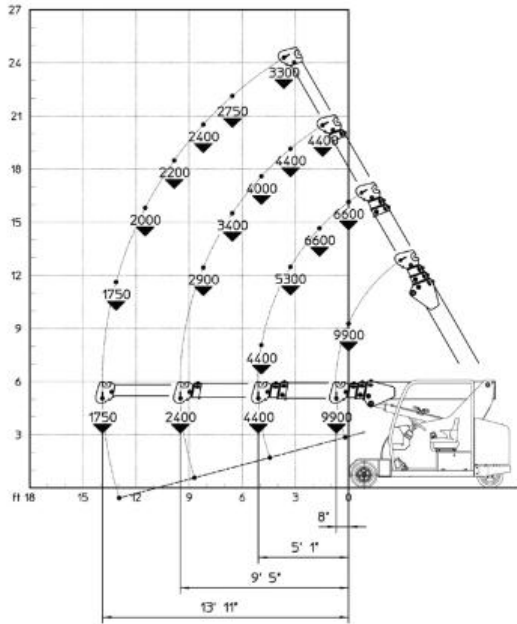
**MC600** 132.000 lb 45





PICK & CARRY CRANES

# MC45 9.900 lb



ft

- FRAME:** JMG designed and manufactured, box type, torsion resistant design of high strength structural steel.
- BOOM:** Made of moulded and welded quality steel plate, comprised of a base unit and three hydraulic extensions
- TRACTION MOTOR:** Electric motor 5 kW 48 V AC, insulation class H
- MOTOR PUMP:** Electric motor 9 kW 48 V AC, insulation class H
- POWER DRIVE:** MOSFET electronic switch
- BATTERY:** 48 V 560 Ah
- TRANSMISSION:** Rear axle through geared reducer
- WHEELS:** Front wheels 18x7-8"  
Rear axle: 1 Superelastic 200/50-10"
- BRAKING:** Service brake: pedal operated hydraulic disc brakes on front wheels. Parking and emergency brake: electromagnetic type acting on the shaft engine with automatic insertion.
- STEERING:** On the rear wheel by hydraulic motor controlled by hydrostatic power steering with load sensing priority valve feeded by the hydraulic system of the crane
- HYDRAULIC SYSTEM:** Powered by a silenced gear pump. Actuators are controlled through electro-proportional hydraulic distributor operated by electronic joystick. Filter and safety valve. 22 MPa max pressure
- SAFETY DEVICES:** Electronic load moment indicator
- OPTIONAL EQUIPMENT:** Hydraulic winch - Jib - Non-marking wheels (at extra charge)  
- Man basket - Hydraulic chain hoist - Cable remote control - Radio remote control - Hydraulic forks

<b>CRANE CLASSIFICATION ACCORDING TO UNI ISO 4301-1</b>	A3
<b>EU STANDARD CE</b>	2006/42 CE MD 2004/108 CE EMC 2006/95 CE LVD 2000/14/CE And subsequent modifications
<b>REFERENCE STANDARDS</b>	EN13000:2010 / UNI ISO 4301-2:2011 ANSI/ASME B30.5 - 2011 And subsequent modifications
<b>TRACTION</b>	Electric
<b>BOOM ACTIVATION</b>	Hydraulic
<b>POWER TYPE</b>	Electric battery
<b>MAX. CAPACITY (lb)</b>	9900
<b>TOTAL WEIGHT (lb)</b>	10560
<b>BOOM ANGLE TOPSIDE (°)</b>	60
<b>BOOM ANGLE DOWNSIDE (°)</b>	-15

Battery powered

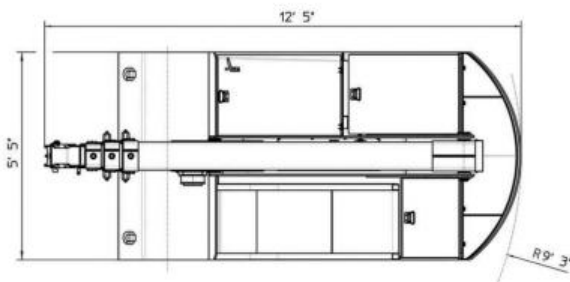
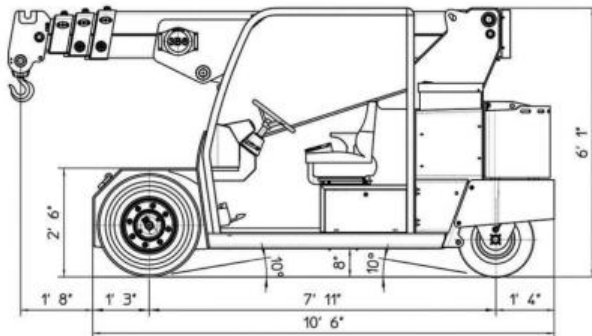
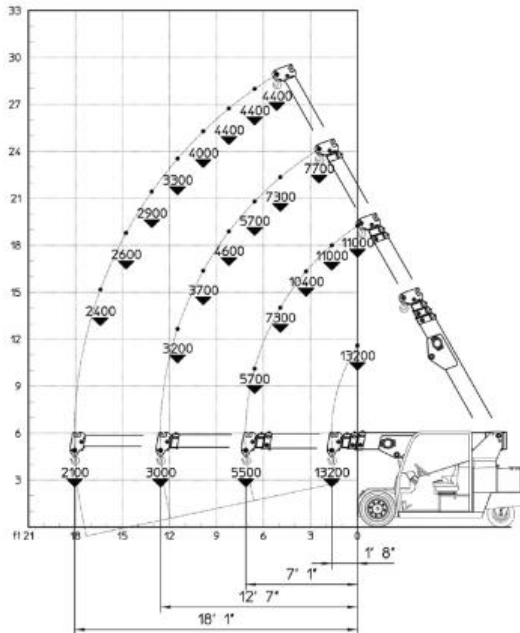
**FOR REFERENCE USE ONLY!**  
Please consult Reliable Crane Service for more information.

**702-400-2516 or 702-525-0840**  
**sales@reliablecraneservice.com**



## PICK & CARRY CRANES

# MC60 13.200 lb



ft

- FRAME:** JMG designed and manufactured, box type, torsion resistant design of high strength structural steel.
- BOOM:** Made of moulded and welded quality steel plate, comprised of a base unit, and three hydraulic extensions
- TRACTION MOTOR:** Electric motor 2x7,5 kW 72 V AC, insulation class H
- MOTOR PUMP:** Electric motor 12 kW 72 V AC, insulation class H
- BATTERY:** 72 V 575 Ah
- POWER DRIVE:** Electronic speed control, MOSFET type
- TRANSMISSION:** Front axle through geared reducer
- WHEELS:** Front axle: 2 Superelastic 250-15"  
Rear wheels 21x8-9"
- BRAKING:** Service brake: hydraulic pedal operated. Parking and emergency brake: hydraulic with automatic control
- STEERING:** On the rear wheels by hydraulic motor controlled by hydrostatic power steering with load sensing priority valve. The supply of the hydrostatic system is guaranteed by the oil dynamic system of the crane
- HYDRAULIC SYSTEM:** Powered by a silenced gear pump. Actuators controlled through electro-proportional distributor with electronic joystick. Filter and safety valve. 22 MPa max pressure
- SAFETY DEVICES:** Electronic load moment indicator
- OPTIONAL EQUIPMENT:** Hydraulic winch - Jib - Non-marking wheels (at extra charge)  
- Man basket - Hydraulic chain hoist - Cable remote control - Radio remote control - Fork attachment

<b>CRANE CLASSIFICATION ACCORDING TO UNI ISO 4301-1</b>	A3
<b>EU STANDARD CE</b>	2006/42 CE MD 2004/108 CE EMC 2006/95 CE LVD 2000/14/CE And subsequent modifications
<b>REFERENCE STANDARDS</b>	EN13000:2010 / UNI ISO 4301-2:2011 ANSI/ASME B30.5 - 2011 And subsequent modifications
<b>TRACTION</b>	Electric
<b>BOOM ACTIVATION</b>	Hydraulic
<b>POWER TYPE</b>	Electric battery
<b>MAX. CAPACITY (lb)</b>	13200
<b>TOTAL WEIGHT (lb)</b>	14300
<b>BOOM ANGLE TOPSIDE (°)</b>	60
<b>BOOM ANGLE DOWNSIDE (°)</b>	-15

Battery powered

**FOR REFERENCE USE ONLY!**  
Please consult Reliable Crane Service for more information.

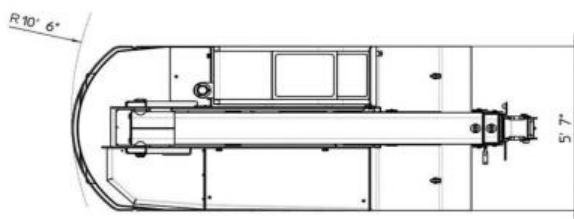
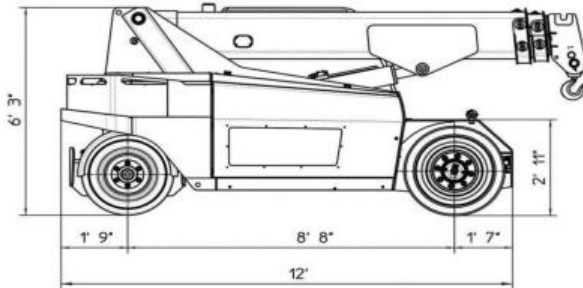
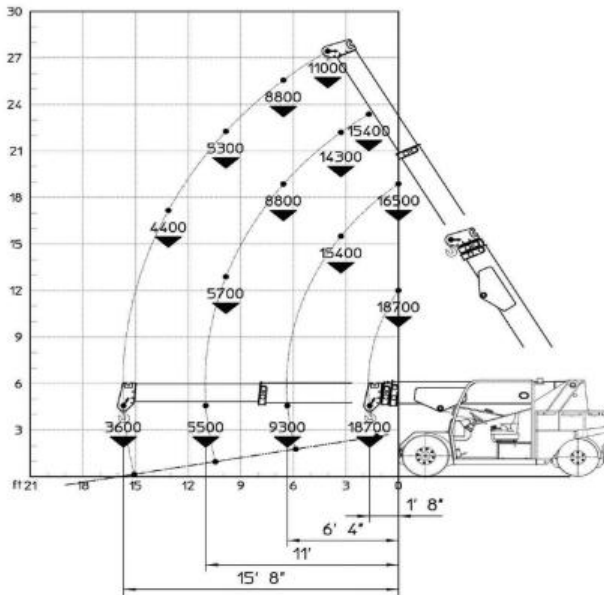
**702-400-2516 or 702-525-0840**  
**sales@reliablecraneservice.com**





## PICK & CARRY CRANES

# MC85 18.700 lb



ft

- FRAME:** JMG designed and manufactured, box type, torsion resistant design of high strength structural steel.
- BOOM:** Made of moulded and welded quality steel plate, comprised of a base unit and two hydraulic extensions (proportional telescopic boom)
- TRACTION MOTOR:** Electric motor 2x7,5 kW 72 V AC, insulation class H
- MOTOR PUMP:** Electric motor 16 kW 72 V AC, insulation class H
- BATTERY:** 72 V 620 Ah
- POWER DRIVE:** Electronic speed control, MOSFET type
- TRANSMISSION:** Front axle through geared reducer
- WHEELS:** Front axle: 2 Superelastic 355x65-15"  
Rear axle: 2 Superelastic 7,50-15"
- BRAKING:** Service brake: hydraulic pedal operated. Parking and emergency brake: hydraulic with automatic control
- STEERING:** On the rear wheels by hydraulic motor controlled by hydrostatic power steering with load sensing priority valve. The supply of the hydrostatic system is guaranteed by the oil dynamic system of the crane
- HYDRAULIC SYSTEM:** Powered by a silenced gear pump. Actuators controlled through electro-proportional distributor with electronic joystick. Filter and safety valve. 22 MPa max pressure
- SAFETY DEVICES:** Electronic load moment indicator
- OPTIONAL EQUIPMENT:** Hydraulic winch - Jib - Non-marking wheels (at extra charge)  
- Man basket - Hydraulic chain hoist - Cable remote control - Radio remote control - Fork attachment

<b>CRANE CLASSIFICATION ACCORDING TO UNI ISO 4301-1</b>	A3
<b>EU STANDARD CE</b>	2006/42 CE MD 2004/108 CE EMC 2006/95 CE LVD 2000/14/CE And subsequent modifications
<b>REFERENCE STANDARDS</b>	EN13000:2010 / UNI ISO 4301-2:2011 ANSI/ASME B30.5 - 2011 And subsequent modifications
<b>TRACTION</b>	Electric
<b>BOOM ACTIVATION</b>	Hydraulic
<b>POWER TYPE</b>	Electric battery
<b>MAX. CAPACITY (lb)</b>	18700
<b>TOTAL WEIGHT (lb)</b>	20000
<b>BOOM ANGLE TOPSIDE (°)</b>	60
<b>BOOM ANGLE DOWNSIDE (°)</b>	-10

Battery powered

**FOR REFERENCE USE ONLY!**

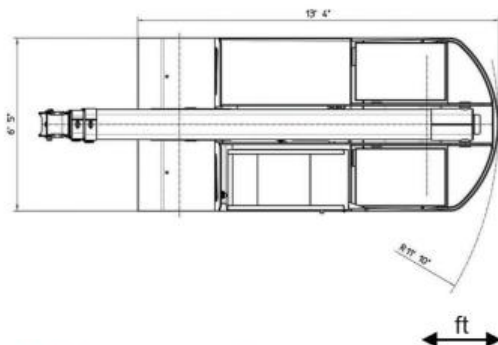
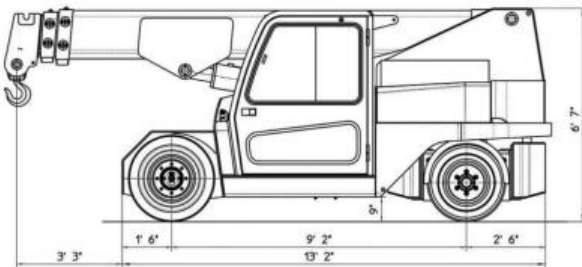
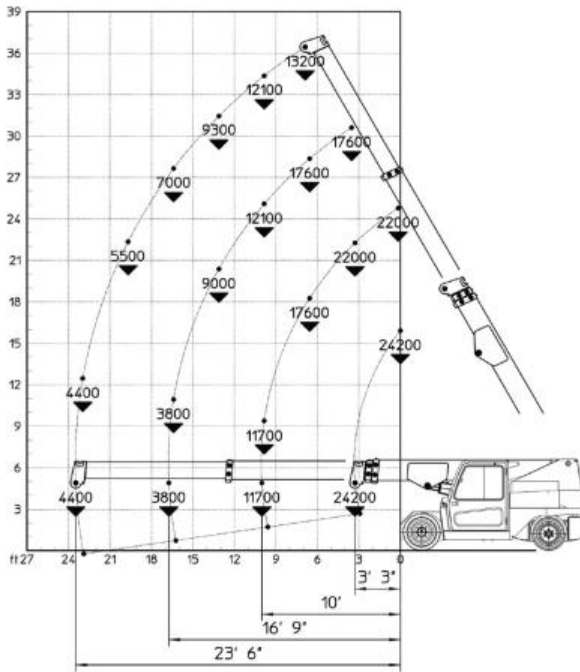
Please consult Reliable Crane Service for more information.

702-400-2516 or 702-525-0840  
sales@reliablecraneservice.com



## PICK & CARRY CRANES

# MC110 24.200 lb



ft

- FRAME:** JMG designed and manufactured, box type, torsion resistant design of high strength structural steel.
- BOOM:** Made of moulded and welded quality steel plate, comprised of a base unit and two hydraulic extensions (proportional telescopic boom)
- TRACTION MOTOR:** Electric motors 2 x 7.5kW 80V AC
- MOTOR PUMP:** Electric motor 16kW 80V AC
- BATTERY:** 80V 840 Ah
- POWER DRIVE:** Electronic speed control, MOSFET type
- TRANSMISSION:** Front axle through geared reducer
- WHEELS:** Front wheels 300-15"  
Rear wheels 250-15"
- BRAKING:** Service brake: hydraulic pedal operated. Parking and emergency brake: hydraulic with automatic control
- STEERING:** On the rear wheels by hydraulic motor controlled by hydrostatic power steering with load sensing priority valve. The supply of the hydrostatic system is guaranteed by the oil dynamic system of the crane
- HYDRAULIC SYSTEM:** Powered by a silenced gear pump. Actuators controlled through electro-proportional distributor with electronic joystick. Filter and safety valve. 22 MPa max pressure
- SAFETY DEVICES:** Electronic load moment indicator
- OPTIONAL EQUIPMENT:** Hydraulic winch - Jib - Non-marking wheels (at extra charge)  
- Man basket - Hydraulic chain hoist - Cable remote control - Radio remote control - Fork attachment

<b>CRANE CLASSIFICATION ACCORDING TO UNI ISO 4301-1</b>	A3
<b>EU STANDARD CE</b>	2006/42 CE MD 2004/108 CE EMC 2006/95 CE LVD 2000/14/CE And subsequent modifications
<b>REFERENCE STANDARDS</b>	EN13000:2010 / UNI ISO 4301-2:2011 ANSI/ASME B30.5 - 2011 And subsequent modifications
<b>TRACTION</b>	Electric
<b>BOOM ACTIVATION</b>	Hydraulic
<b>POWER TYPE</b>	Electric battery
<b>MAX. CAPACITY (lb)</b>	24200
<b>TOTAL WEIGHT (lb)</b>	29650
<b>BOOM ANGLE TOPSIDE (°)</b>	60
<b>BOOM ANGLE DOWNSIDE (°)</b>	-10

Battery powered

**FOR REFERENCE USE ONLY!**  
Please consult Reliable Crane Service for more information.

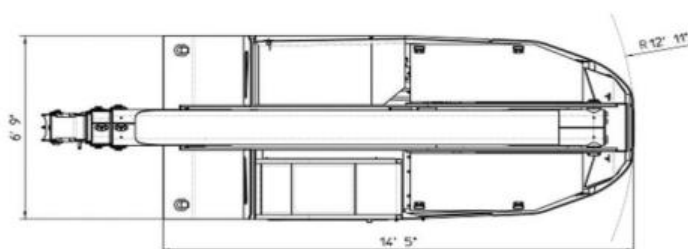
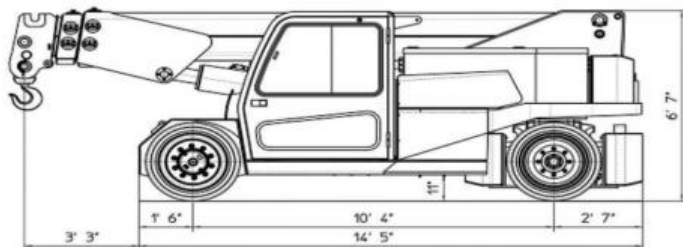
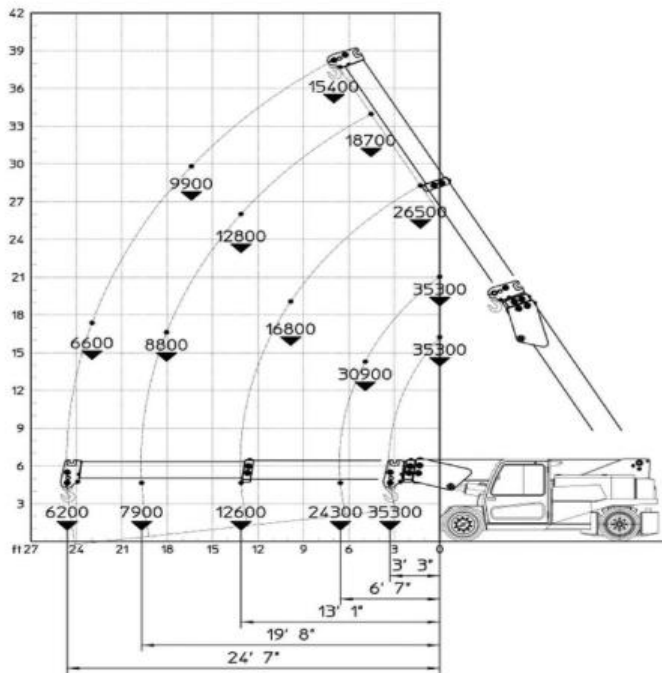
**702-400-2516 or 702-525-0840**  
sales@reliablecraneservice.com





## PICK & CARRY CRANES

# MC160 35.300 lb



ft

- FRAME:** JMG designed and manufactured, box type, torsion resistant design of high strength structural steel.
- BOOM:** Made of moulded and welded quality steel plate, comprised of a base unit and two hydraulic extensions (proportional telescopic boom)
- TRACTION MOTOR:** Electric motor 2x10 kW 96 V AC, insulation class K1H
- MOTOR PUMP:** Electric motor 23 kW + 12 kW 96 V AC, insulation class K1H
- BATTERY:** 96 V 1035 Ah
- POWER DRIVE:** Electronic speed control, MOSFET type
- TRANSMISSION:** Front axle through geared reducer wheel gears
- WHEELS:** Front axle: 4 Superelastic 355x50-20"  
Rear axle: 2 Superelastic 355x50-20"
- BRAKING:** Service brake: hydraulic pedal operated. Parking and emergency brake: hydraulic with automatic control
- STEERING:** On the rear wheels by hydraulic motor controlled by hydrostatic power steering with load sensing priority valve. The supply of the hydrostatic system is guaranteed by the 12kW electric gear pump system of the crane
- HYDRAULIC SYSTEM:** Powered by a silenced gear pump. Actuators controlled through electro-proportional distributor with electronic joystick. Filter and safety valve. 22 MPa max pressure
- SAFETY DEVICES:** Electronic load moment indicator
- OPTIONAL EQUIPMENT:** Hydraulic winch - Jib - Non-marking wheels (at extra charge)  
- Man basket - Hydraulic chain hoist - Cable remote control - Radio remote control - Fork attachment

<b>CRANE CLASSIFICATION ACCORDING TO UNI ISO 4301-1</b>	A3
<b>EU STANDARD CE</b>	2006/42 CE MD 2004/108 CE EMC 2006/95 CE LVD 2000/14/CE And subsequent modifications
<b>REFERENCE STANDARDS</b>	EN13000:2010 / UNI ISO 4301-2:2011 ANSI/ASME B30.5 - 2011 And subsequent modifications
<b>TRACTION</b>	Electric
<b>BOOM ACTIVATION</b>	Hydraulic
<b>POWER TYPE</b>	Electric battery
<b>MAX. CAPACITY (lb)</b>	35300
<b>TOTAL WEIGHT (lb)</b>	41000
<b>BOOM ANGLE TOPSIDE (°)</b>	60
<b>BOOM ANGLE DOWNSIDE (°)</b>	-8

Battery powered

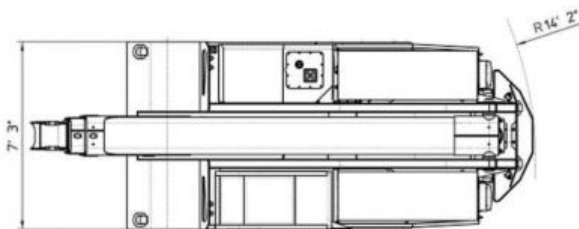
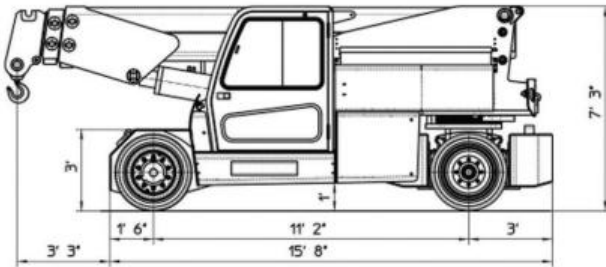
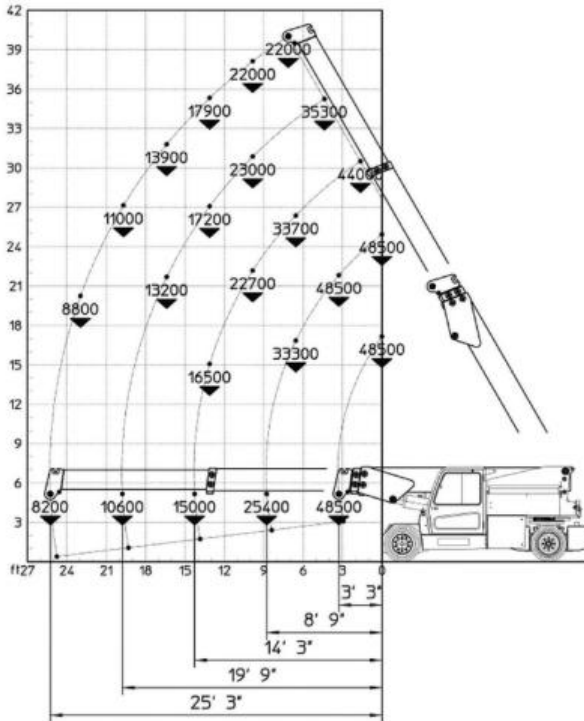
**FOR REFERENCE USE ONLY!**  
Please consult Reliable Crane Service for more information.

**702-400-2516 or 702-525-0840**  
sales@reliablecraneservice.com



## PICK & CARRY CRANES

# MC220 48.500 lb



- FRAME:** JMG designed and manufactured, box type, torsion resistant design of high strength structural steel.
- BOOM:** Made of moulded and welded quality steel plate, comprised of a base unit and two hydraulic extensions (proportional telescopic boom)
- TRACTION MOTOR:** Electric motor 2x12 kW 96 V AC, insulation class K1H
- MOTOR PUMP:** Electric motor 23 kW+12 kW 96 V AC, insulation class K1H
- BATTERY:** 96 V 1125 Ah
- POWER DRIVE:** Electronic speed control, MOSFET type
- TRANSMISSION:** Front axle through geared reducer
- WHEELS:** Front axle: 4 Superelastic 355x50-20"  
Rear axle: 2 Superelastic 355x50-20"
- BRAKING:** Service brake: hydraulic pedal operated. Parking and emergency brake: hydraulic with automatic control
- STEERING:** On the rear wheels by hydraulic motor controlled by hydrostatic power steering with load sensing priority valve. The supply of the hydrostatic system is guaranteed by the 12kW electric gear pump system of the crane
- HYDRAULIC SYSTEM:** Powered by a silenced gear pump. Actuators controlled through electro-proportional distributor with electronic joystick. Filter and safety valve. 23 MPa max pressure

**SAFETY DEVICES:** Electronic load moment indicator

**OPTIONAL EQUIPMENT:** Hydraulic winch - Jib - Non-marking wheels (at extra charge)  
- Man basket - Hydraulic chain hoist - Cable remote control - Radio remote control - Fork attachment

<b>CRANE CLASSIFICATION ACCORDING TO UNI ISO 4301-1</b>	A3
<b>EU STANDARD CE</b>	2006/42 CE MD 2004/108 CE EMC 2006/95 CE LVD 2000/14/CE And subsequent modifications
<b>REFERENCE STANDARDS</b>	EN13000:2010 / UNI ISO 4301-2:2011 ANSI/ASME B30.5 - 2011 And subsequent modifications
<b>TRACTION</b>	Electric
<b>BOOM ACTIVATION</b>	Hydraulic
<b>POWER TYPE</b>	Electric battery
<b>MAX. CAPACITY (lb)</b>	48500
<b>TOTAL WEIGHT (lb)</b>	50400
<b>BOOM ANGLE TOPSIDE (°)</b>	60
<b>BOOM ANGLE DOWNSIDE (°)</b>	-7

Battery powered



**FOR REFERENCE USE ONLY!**  
Please consult Reliable Crane Service for more information.

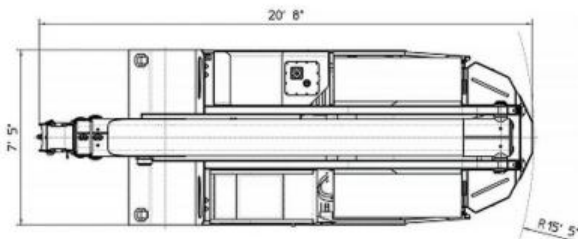
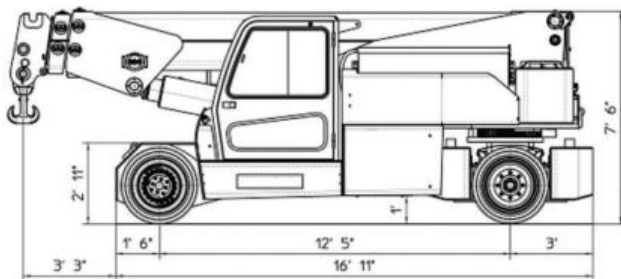
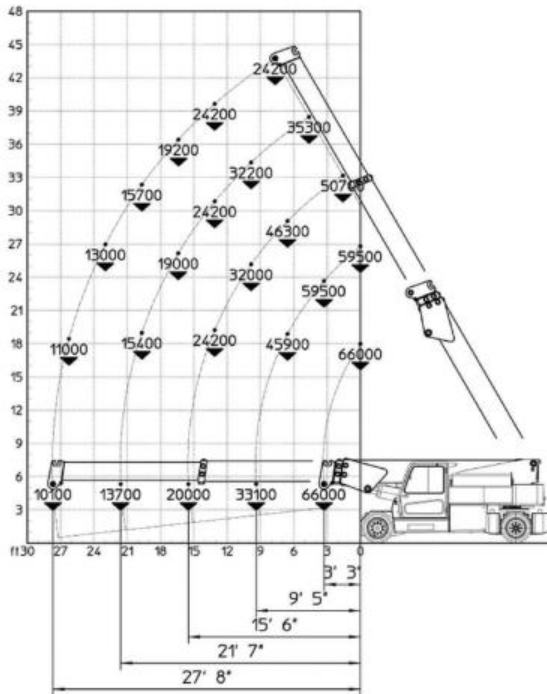
**702-400-2516 or 702-525-0840**  
**sales@reliablecraneservice.com**





## PICK & CARRY CRANES

# MC300 66.000 lb



ft

- FRAME:** JMG designed and manufactured, box type, torsion resistant design of high strength structural steel.
- BOOM:** Made of moulded and welded quality steel plate, comprised of a base unit and two hydraulic extensions (proportional telescopic boom)
- TRACTION MOTOR:** Electric motor 2x12 kW 96 V AC, insulation class K1H
- MOTOR PUMP:** Electric motor 35 kW + 12 kW 96 V AC, insulation class K1H
- BATTERY:** 96 V 1395 Ah
- POWER DRIVE:** Electronic speed control, MOSFET type
- TRANSMISSION:** Front axle through geared reducer
- WHEELS:** Front axle: 4 Superelastic 355x50-20"  
Rear axle: 2 Superelastic 355x50-20"
- BRAKING:** Service brake: hydraulic pedal operated. Parking and emergency brake: hydraulic with automatic control
- STEERING:** On the rear wheels by hydraulic motor controlled by hydrostatic power steering with load sensing priority valve. The supply of the hydrostatic system is guaranteed by the 12kW electric gear pump system of the crane
- HYDRAULIC SYSTEM:** Powered by a 35 kW electric gear pump. Actuators controlled through electro-proportional distributor with electronic joystick. Filter and safety valve. 23 MPa max pressure
- SAFETY DEVICES:** Electronic load moment indicator
- OPTIONAL EQUIPMENT:** Hydraulic winch - Jib - Non-marking wheels (at extra charge)  
- Man basket - Hydraulic chain hoist - Cable remote control - Radio remote control - Fork attachment

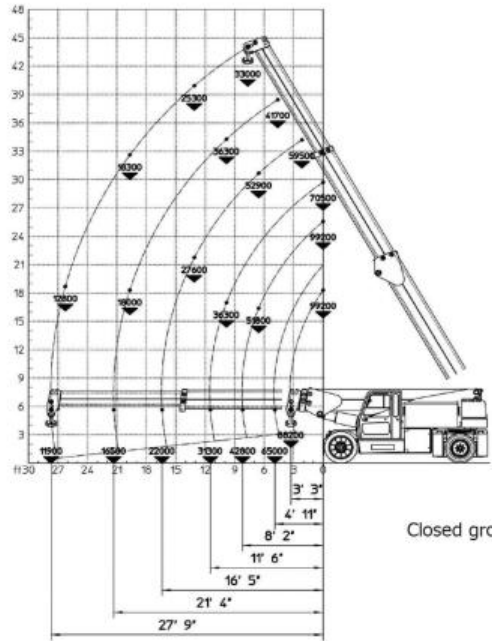
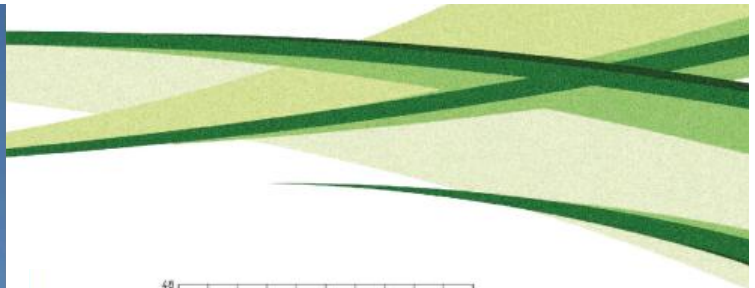
<b>CRANE CLASSIFICATION ACCORDING TO UNI ISO 4301-1</b>	A3
<b>EU STANDARD CE</b>	2006/42 CE MD 2004/108 CE EMC 2006/95 CE LVD 2000/14/CE And subsequent modifications
<b>REFERENCE STANDARDS</b>	EN13000:2010 / UNI ISO 4301-2:2011 ANSI/ASME B30.5 - 2011 And subsequent modifications
<b>TRACTION</b>	Electric
<b>BOOM ACTIVATION</b>	Hydraulic
<b>POWER TYPE</b>	Electric battery
<b>MAX. CAPACITY (lb)</b>	66000
<b>TOTAL WEIGHT (lb)</b>	59800
<b>BOOM ANGLE TOPSIDE (°)</b>	60
<b>BOOM ANGLE DOWNSIDE (°)</b>	-7

Battery powered

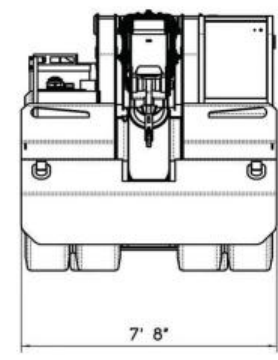
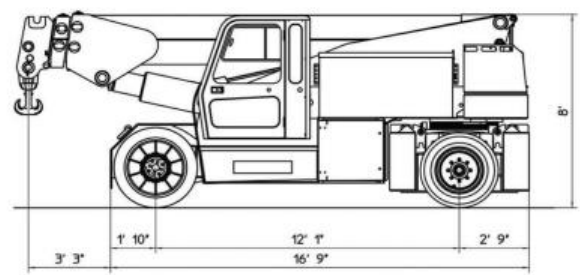
**FOR REFERENCE USE ONLY!**

Please consult Reliable Crane Service for more information.

702-400-2516 or 702-525-0840  
sales@reliablecraneservice.com



Closed group

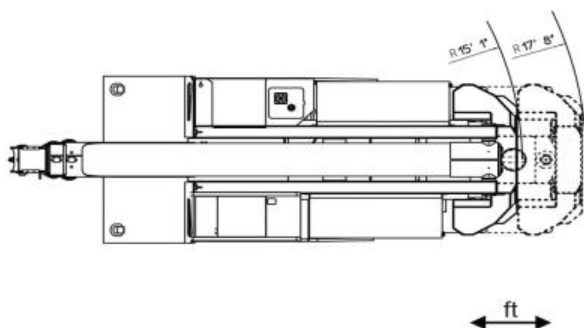
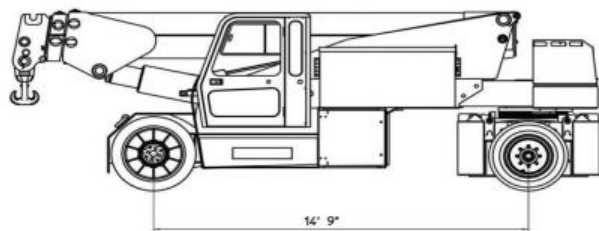
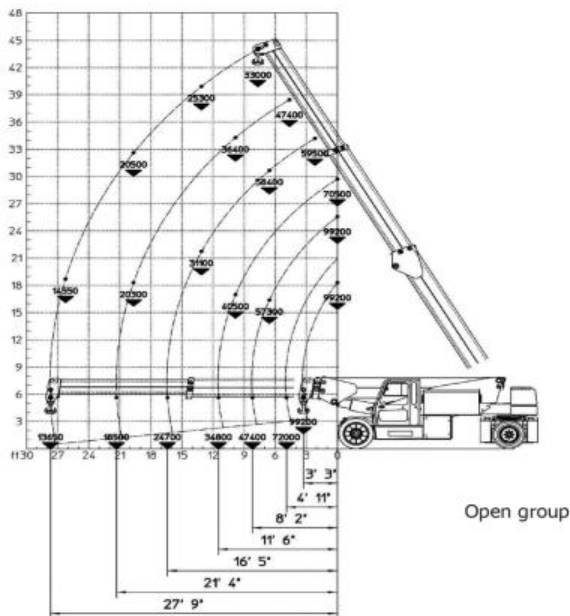






### PICK & CARRY CRANES

# MC450 99.200 lb



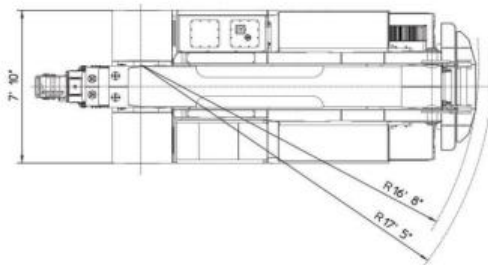
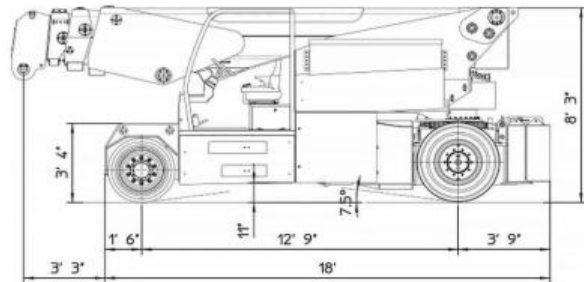
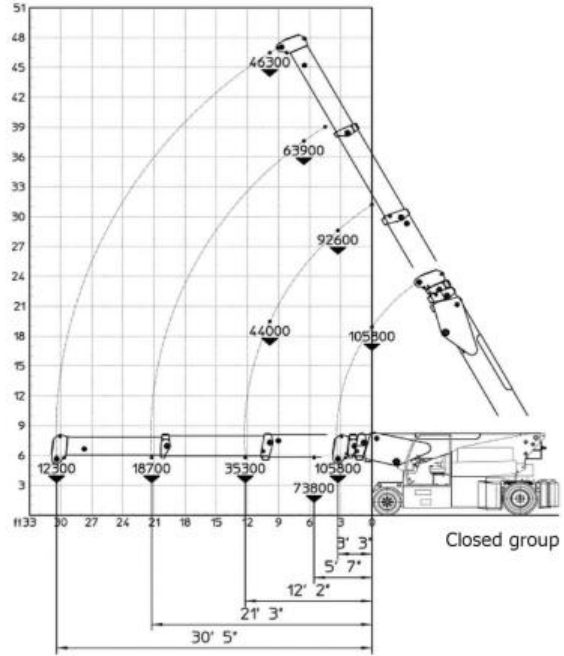
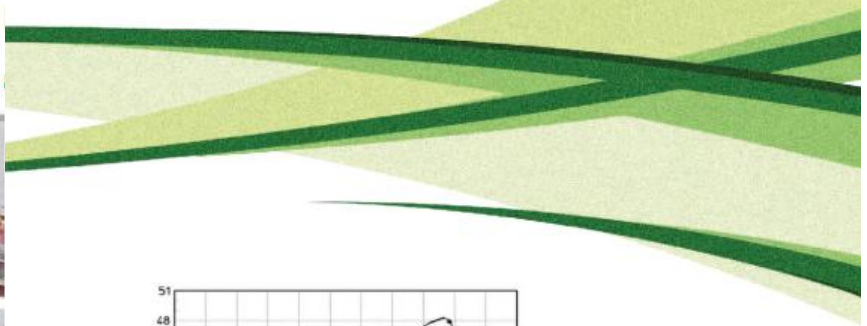
- FRAME:** JMG designed and manufactured, box type, torsion resistant design of high strength structural steel.
- BOOM:** Made of moulded and welded quality steel plate, comprised of a base unit and two hydraulic extensions (proportional telescopic boom)
- TRACTION MOTOR:** Electric motor 2x24 kW 96 V AC, insulation class K1H
- MOTOR PUMP:** Electric motor 1x35 kW 96 V AC, 1x16 kW 96 V AC, insulation class K1H
- BATTERY:** 96 V 1395 Ah
- POWER DRIVE:** Electronic speed control, MOSFET type
- TRANSMISSION:** Front axle through epicyclic reduction gears
- WHEELS:** 4 cushion 40x16x30
- BRAKING:** Service brake: hydraulic pedal operated.  
Parking and emergency brake: hydraulic with automatic insertion electric control
- STEERING:** On the rear wheels by hydraulic motor controlled by hydrostatic power steering with load sensing priority valve. The supply of the hydrostatic system is guaranteed by the oil dynamic system of the crane
- HYDRAULIC SYSTEM:** Powered by a 35 kW motor pump. Actuators controlled through electro-proportional distributor with electronic joystick. Filter and safety valve. 23 MPa max pressure
- SAFETY DEVICES:** Electronic load moment indicator
- OPTIONAL EQUIPMENT:** Hydraulic winch - Manual Jib - Hydraulic Jib - (at extra charge)  
Non-marking wheels - Man basket - Hydraulic chain hoist - Cable remote control - Radio remote control - Hydraulic forks

<b>CRANE CLASSIFICATION ACCORDING TO UNI ISO 4301-1</b>	A3
<b>EU STANDARD CE</b>	2006/42 CE MD 2004/108 CE EMC 2006/95 CE LVD And subsequent modifications
<b>REFERENCE STANDARDS</b>	EN13000:2010 / UNI ISO 4301-2:2011 ANSI/ASME B30.5 - 2011 And subsequent modifications
<b>TRACTION</b>	Electric
<b>BOOM ACTIVATION</b>	Hydraulic
<b>POWER TYPE</b>	Electric battery
<b>MAX. CAPACITY (lb)</b>	99200
<b>TOTAL WEIGHT (lb)</b>	70500
<b>BOOM ANGLE TOPSIDE (°)</b>	60
<b>BOOM ANGLE DOWNSIDE (°)</b>	-6



**FOR REFERENCE USE ONLY!**  
Please consult Reliable Crane Service for more information.

**702-400-2516 or 702-525-0840**  
sales@reliablecraneservice.com



**FOR REFERENCE USE ONLY!**  
Please consult Reliable Crane Service for more information.

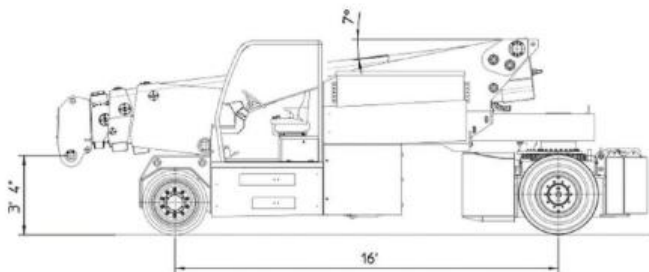
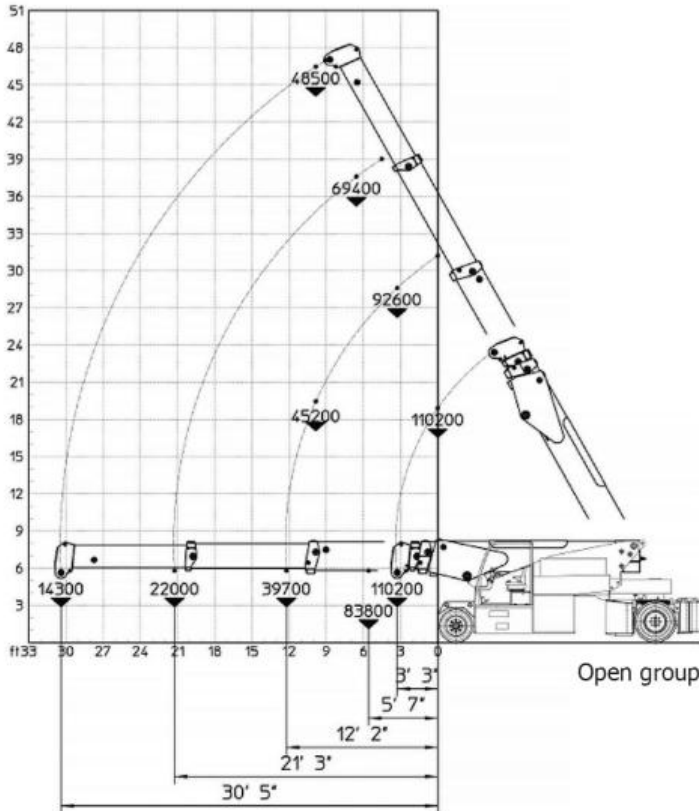
702-400-2516 or 702-525-0840  
sales@reliablecraneservice.com





### PICK & CARRY CRANES

# MC500 110.000 lb



ft

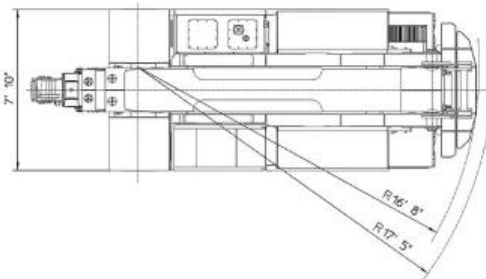
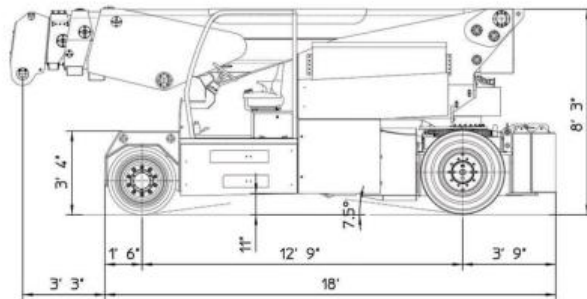
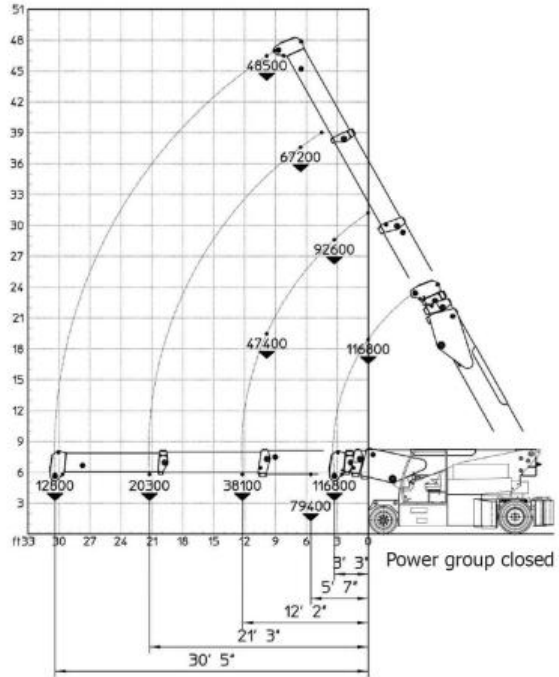
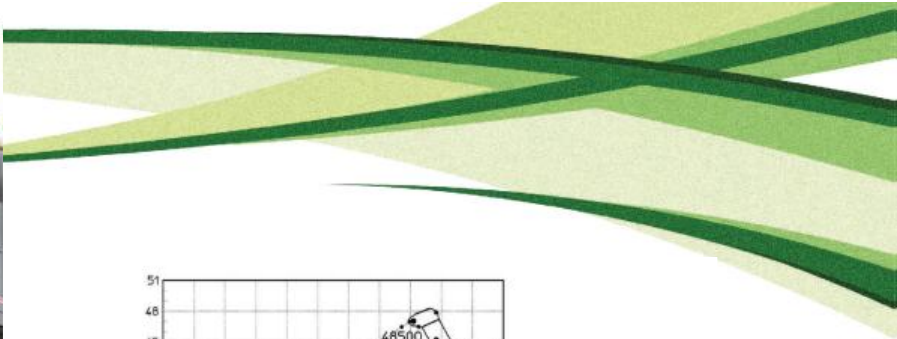
- FRAME:** JMG designed and manufactured, box type, torsion resistant design of high strength structural steel.
- BOOM:** Made of moulded and welded quality steel plate, comprised of a base unit and three hydraulic extensions (proportional telescopic boom)
- TRACTION MOTOR:** Electric motor 2x24 kW 96 V AC, insulation class K1H
- MOTOR PUMP:** Electric motor 1x35 kW 96 V AC, 1x16 kW 96 V AC, insulation class K1H
- BATTERY:** 96 V 1395 Ah
- POWER DRIVE:** Electronic speed control, MOSFET type
- TRANSMISSION:** Rear axle through epicyclic reduction gears
- WHEELS:** Front axle: 6 Superelastic 355x50-20"  
Rear axle: 4 Superelastic 10.00-20"
- BRAKING:** Service brake: hydraulic pedal operated.  
Parking and emergency brake: hydraulic with automatic insertion electric control
- STEERING:** On the rear wheels by hydraulic motor controlled by hydrostatic power steering with load sensing priority valve. The supply of the hydrostatic system is guaranteed by the oil dynamic system of the crane
- HYDRAULIC SYSTEM:** Powered by a 35 kW motor pump. Actuators controlled through electro-proportional distributor with electronic joystick. Filter and safety valve. 22 MPa max pressure
- SAFETY DEVICES:** Electronic load moment indicator
- OPTIONAL EQUIPMENT:** Hydraulic winch - Manual Jib - Hydraulic Jib - (at extra charge)  
Non-marking wheels - Man basket - Hydraulic chain hoist - Cable remote control - Radio remote control - Hydraulic forks

<b>CRANE CLASSIFICATION ACCORDING TO UNI ISO 4301-1</b>	A3
<b>EU STANDARD CE</b>	2006/42 CE MD 2004/108 CE EMC 2006/95 CE LVD And subsequent modifications
<b>REFERENCE STANDARDS</b>	EN13000:2010 / UNI ISO 4301-2:2011 ANSI/ASME B30.5 - 2011 And subsequent modifications
<b>TRACTION</b>	Electric
<b>BOOM ACTIVATION</b>	Hydraulic
<b>POWER TYPE</b>	Electric battery
<b>MAX. CAPACITY (lb)</b>	110000
<b>TOTAL WEIGHT (lb)</b>	83600
<b>BOOM ANGLE TOPSIDE (°)</b>	60
<b>BOOM ANGLE DOWNSIDE (°)</b>	-7



**FOR REFERENCE USE ONLY!**  
Please consult Reliable Crane Service for more information.

**702-400-2516 or 702-525-0840**  
**sales@reliablecraneservice.com**



**FOR REFERENCE USE ONLY!**  
Please consult Reliable Crane Service for more information.

702-400-2516 or 702-525-0840  
sales@reliablecraneservice.com



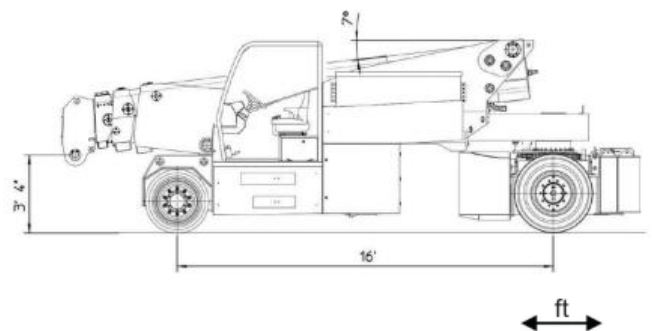
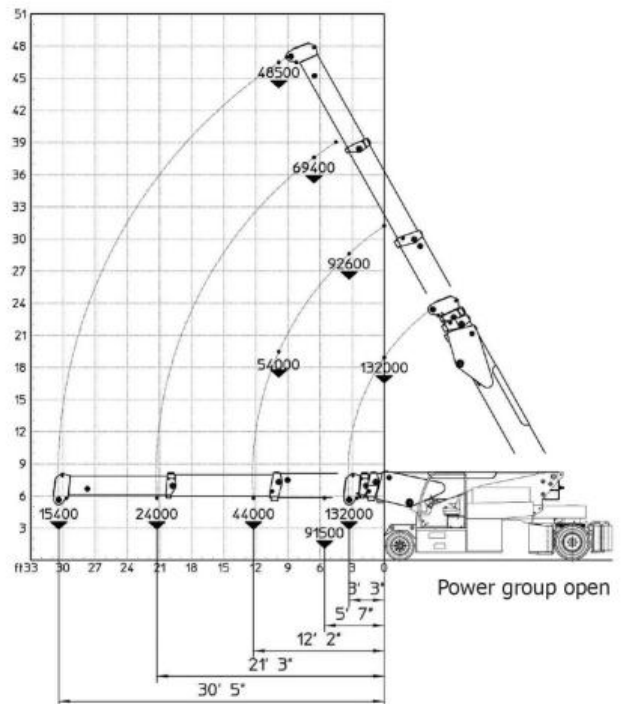


PICK & CARRY CRANES

# MC600

132.000 lb

- FRAME:** JMG designed and manufactured, box type, torsion resistant design of high strength structural steel.
- BOOM:** Made of moulded and welded quality steel plate, comprised of a base unit and three hydraulic extensions (proportional telescopic boom)
- TRACTION MOTOR:** Electric motor 2x24 kW 96 V AC, insulation class K1H
- MOTOR PUMP:** Electric motor 1x35 kW 96 V AC, 1x16 kW 96 V AC, insulation class K1H
- BATTERY:** 96 V 1395 Ah
- POWER DRIVE:** Electronic speed control, MOSFET type
- TRANSMISSION:** Rear axle through epicyclic reduction gears
- WHEELS:** Front axle: 6 Superelastic 355x50-20"  
Rear axle: 4 Superelastic 10.00-20"
- BRAKING:** Service brake: hydraulic pedal operated.  
Parking and emergency brake: hydraulic with automatic insertion electric control
- STEERING:** On the rear wheels by hydraulic motor controlled by hydrostatic power steering with load sensing priority valve. The supply of the hydrostatic system is guaranteed by the oil dynamic system of the crane
- HYDRAULIC SYSTEM:** Powered by a 35 kW motor pump. Actuators controlled through electro-proportional distributor with electronic joystick. Filter and safety valve. 22 MPa max pressure
- SAFETY DEVICES:** Electronic load moment indicator
- OPTIONAL EQUIPMENT:** Hydraulic winch - Manual Jib - Hydraulic Jib -  
(at extra charge) Non-marking wheels - Man basket - Hydraulic chain hoist - Cable remote control - Radio remote control - Hydraulic forks



<b>CRANE CLASSIFICATION ACCORDING TO UNI ISO 4301-1</b>	A3
<b>EU STANDARD CE</b>	2006/42 CE MD 2004/108 CE EMC 2006/95 CE LVD And subsequent modifications
<b>REFERENCE STANDARDS</b>	EN13000:2010 / UNI ISO 4301-2:2011 ANSI/ASME B30.5 - 2011 And subsequent modifications
<b>TRACTION</b>	Electric
<b>BOOM ACTIVATION</b>	Hydraulic
<b>POWER TYPE</b>	Electric battery
<b>MAX. CAPACITY (lb)</b>	132000
<b>TOTAL WEIGHT (lb)</b>	85800
<b>BOOM ANGLE TOPSIDE (°)</b>	60
<b>BOOM ANGLE DOWNSIDE (°)</b>	-7

Battery powered



# MORE ABOUT

**Crane features** 50

---

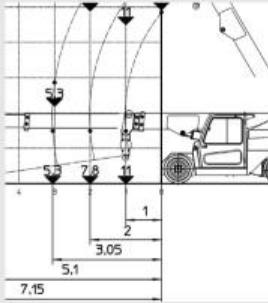
**Optionals** 51

---





# CRANE FEATURES



## Load charts

JMG Cranes chose the policy of TRANSPARENCY. Load charts always gives the capacity from the front of the crane, on every model. At JMG the 0 is from the front of the crane: a fixed universal point to avoid ambiguities. JMG Cranes chose not take the zero from the centre of the front wheel because it changes according to the crane model (bigger cranes have bigger wheels). It is very important, by comparing the load charts, that customers take the zero from the same point of the crane: it guaranties the correct evaluation.



## Front wheel drive

Front wheels traction is provided by two separated motors and gear boxes; this peculiarity allows to move the mobile crane in extreme conditions. Rear wheel drive can not avoid rear wheel slipping, when the crane is loaded. This doesn't happen when the crane has front wheel drive.



## Boom

JMG Cranes boom angles have unique range: +60° to - 15°. It is important to look at boom number of sections, usually JMG booms have 1 section more than competitors. On models up to MC 85 Proportional Telescopic Boom, which is a JMG Patent, is provided. The proportional exit is the optimal solution for the load distribution on the boom and allows to increase the residual capacity. Sections are pentagonal shaped to allow a better sliding and increase the boom stiffness.



## Cabin

The cabin offers a modern design, great visibility and an intuitive and functional interface. The door is divided into two parts and customer can choose between complete opening or only top window. The cabin is equipped with all the extras needed to make it comfortable and safe, such as toolbox, grid document holder, light, wiper washer, shatterproof glass, protective grid (optional). The high monitor brightness allows a clear and immediate view of all the information about the status of the crane and working conditions.



## Quick & easy to fix

All accessories are designed to be assembled and disassembled easily and quickly. The crane can be transformed in a telehandler or in an elevating work platforms in few seconds.



## Counter rotation and steering

The rear axle steering is on 180° and, thanks to a technical improvement, the front wheel can drive simultaneously but in opposite direction, this gives the possibility to position the boom with very high precision.



## Brake

All JMG mobile cranes are equipped with service brakes and parking brakes on the front axle. Thanks to these devices, the crane is braking in safety conditions even when the crane is loading a weight. The special Braking system has a safety device which stops the crane when the operator leaves the driver seat.



# OPTIONALS



## Safety

LMI system (load moment indicator) complying with latest European safety standards; the system is equipped with a black box that records all crane operations.



## Simoultaneous operations

Thanks to the directional spool valves, simultaneity of moving and lifting is granted on every model. The joystick actions the proportional distributor which allows fluidity and precision of operations.



## Watering system for battery

To make battery virtually maintenance free, we recommend installing an automatic battery watering system. Accidental overfilling, acid overflow and corrosion are eliminated. This optional reduces maintenance and allows operators and management to easily monitor battery water levels at a glance.



## On board battery charger

The HF on board battery chargers have been designed to provide reliable and quality charging for batteries. On board chargers grants the possibility of charging in every place and were originally requested by rental companies but many customers like the advantage of having it as part of the crane.



## Non marking white tyres

Non Marking White tyres are special compound product, largely used in indoor application in food, chemical and pharmaceuticals industries to increase awareness of hygiene and not to damage the floor. The performance characteristics of these tyres are the same as their black counterparts in terms of good traction, low rolling resistance, low heat build up, optimum tread life and full load carrying capacity.



## Winch

Winch is useful when there is an obstruction between the load and the crane or when it's necessary to lift vertically and for a long while. The total lifting max capacity depends on falls number chosen. Under request, winch can be fully remote controlled.



## Mechanic Jib

3 positions mechanic jibs can be tailor studied according to customers need.



## Hydraulic Jib

Hydraulic jib, under request and tailor studied, is an extension which can be guided by the cabin or by the radio remote control.



## Mechanic extensions

Mechanic extensions of any dimension, tailor studied, are available to be assembled both on Mechanic and Hydraulic jibs.





# OPTIONALS



## Radio Remote Control

Boom and crane movement can be proportionally and simultaneously radio remote controlled. Also winch, forks, glass manipulator and man basket can be remote controlled.



## Fork attachment

Forks with load capacity and length are customizable; electro hydraulic compensation is available on all models (the forks remain parallel to the ground); fork position hydraulically adjustable without load is standard from MC 110 and available under request on smaller models.



## Man basket

Basket for 1 or 2 men is available under request. The operator can drive the crane from the basket. The safety system automatically detects when the basket is applied.



## Chain Hoist

Tailor studied on dimensions and capacity, the chain hoist allows to lift huge loads for short displacement.



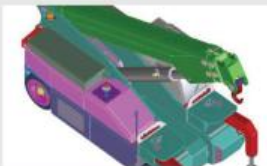
## Glass manipulator

Suction cups for glass with customizable load capacity. The suction cups are connected to a triaxial handler (three axes glass rotation in space). Boom extension or lifting is possible while rotating the glass; this simultaneity allows a complete and accurate motion control. All operations (including vacuum system activation to fix the glass) can be performed by remote control.



## Removable counterweights

Under request, counterweights can be easily removed and fixing operations are simply made by pins. Removability grants more flexibility to customers, who can decide to assemble the full counterweights only when it's strictly necessary. This solution grants time and money saving for transport.



## Front outriggers

Front outriggers are useful when an extra capacity is necessary. The LMI system automatically recognizes the working conditions, in order to work safely.



## Flameproof

Cranes can be adjusted in order to be suitable for use in Hazardous Locations. These versions are available under request for any standard and every zone (ATEX, FM, ANSI...).



www.imq.it

CERTIFICATO N. **9175.JMGC**  
CERTIFICATE N.

SI CERTIFICA CHE IL SISTEMA QUALITA' DI  
WE HEREBY CERTIFY THAT THE QUALITY SYSTEM OPERATED BY

**JMG CRANES SRL**

VIA DANTE 15 - 26100 CREMONA (CR)

UNITA' OPERATIVE  
OPERATIVE UNITS

VIA SITO NUOVO 16 - 29010 SARMATO (PC)

E' CONFORME ALLA NORMA  
IS IN COMPLIANCE WITH THE STANDARD

**ISO 9001:2008**

PER LE SEGUENTI ATTIVITA'  
FOR THE FOLLOWING ACTIVITIES

Progettazione, produzione e vendita di sistemi di sollevamento industriali semoventi  
*Design, production and sales of mobile cranes*

Riferirsi al manuale della qualità per l'applicabilità dei requisiti della norma ISO 9001:2008  
*Refer to quality manual for details of applications to ISO 9001:2008 requirements*

IL PRESENTE CERTIFICATO E' SOGGETTO AL RISPETTO DEL  
REGOLAMENTO PER LA CERTIFICAZIONE DEI SISTEMI DI GESTIONE  
THE USE AND THE VALIDITY OF THE CERTIFICATE SHALL SATISFY THE  
REQUIREMENTS OF THE RULES FOR CERTIFICATION OF MANAGEMENT SYSTEMS

DATE:	PRIMA CERTIFICAZIONE FIRST CERTIFICATION	EMISSIONE CORRENTE CURRENT ISSUE	SCADENZA EXPIRY
	2010-07-19	2013-06-24	2016-07-18

IMQ S.p.A. - VIA QUINTILIANO, 43 - 20138 MILANO ITALY

CISQ is a member of



The International Certification Network  
www.iqnet-certification.com

*IQNet, the association of the world's first class certification bodies, is the largest provider of management System Certification in the world. IQNet is composed of more than 30 bodies and counts over 150 subsidiaries all over the globe.*



EA: 18

SOQ N°005A, SGA N°006D,  
SCR N°005F, SSR N°003G,  
FSM N° 007, PRD N°005B,  
SGE N°006M  
Member degli Accordi di Mutual Riconoscimento EA, UK e ILAC  
Signatory of EA, UK and ILAC Mutual Recognition Agreements

La validità del certificato è subordinata a sorveglianza annuale e riesame completo del Sistema di Gestione con periodicità triennale  
The validity of the certificate is submitted to annual audit and a reassessment of the entire Management System within three years

CISQ è la Federazione Italiana di Organismi di Certificazione dei sistemi di gestione aziendale.

CISQ is the Italian Federation of management system Certification Bodies.



www.cisq.com





THE INTERNATIONAL CERTIFICATION NETWORK

# CERTIFICATE

IQNet and its partner  
**CISQ/IMQ-CSQ**  
hereby certify that the organization

## JMG CRANES SRL

VIA SITO NUOVO 16 - 29010 SARMATO (PC)

*for the following field of activities*

*Design, production and sales of mobile cranes*

*Refer to quality manual for details of applications to ISO 9001:2008 requirements*

*has implemented and maintains a*

**Quality Management System**

*which fulfills the requirements of the following standard*

**ISO 9001:2008**

Issued on: 2013 - 06 - 24

Expiry date: 2016 - 07 - 18

*Registration Number:*

**IT - 73380**



*Michael Drechsel*

*President of IQNET*



*Ing. Claudio Provetti*

*President of CISQ*

**IQNet Partners\*:**

AENOR Spain AFNOR Certification France AIB-Vinçotte International Belgium ANCE-SIGE Mexico APCER Portugal CCC Cyprus  
CISQ Italy CQC China CQM China CQS Czech Republic Cro Cert Croatia DQS Holding GmbH Germany DS Denmark  
FCAV Brazil FONDONORMA Venezuela ICONTEC Colombia IMNC Mexico INNORPI Tunisia  
Inspecta Certification Finland IRAM Argentina JQA Japan KFQ Korea MIRTEC Greece MSZT Hungary Nemko AS Norway  
NSAI Ireland PCBC Poland Quality Austria Austria RR Russia SII Israel SIQ Slovenia SIRIM QAS International Malaysia  
SQS Switzerland SRAC Romania TEST St Petersburg Russia TSE Turkey YUQS Serbia

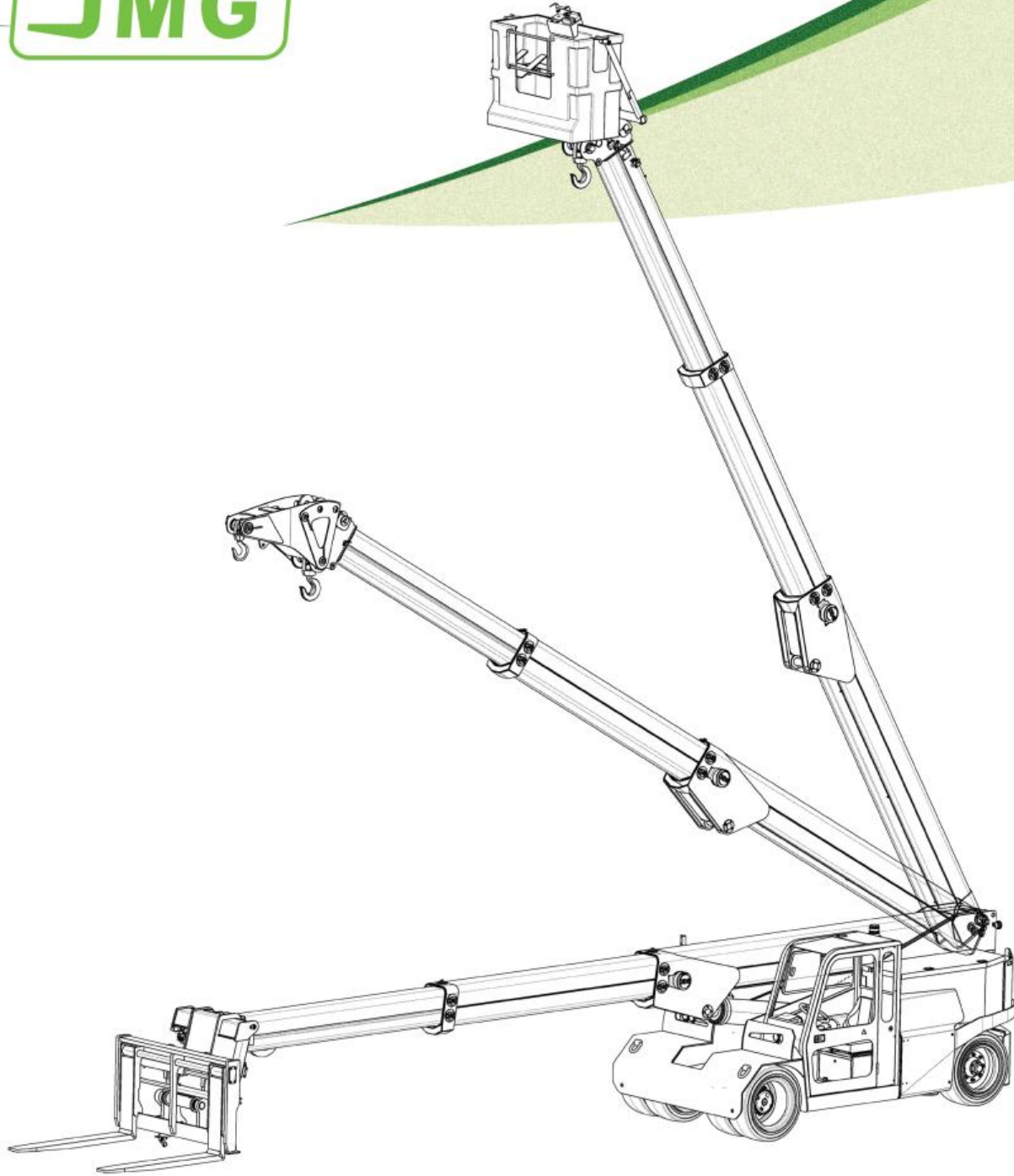
IQNet is represented in the USA by: AFNOR Certification, CISQ, DQS Holding GmbH and NSAI Inc.

\* The list of IQNet partners is valid at the time of issue of this certificate. Updated information is available under [www.iqnet-certification.com](http://www.iqnet-certification.com)



Crane Rental • Heavy Machinery Moving • Project Management

sales@reliablecraneservice.com • 702-525-0840 or 702-400-2516



**One crane... infinite solutions!**

**FOR REFERENCE USE ONLY!**

Please consult Reliable Crane Service for more information.

702-400-2516 or 702-525-0840  
sales@reliablecraneservice.com

[www.reliablecraneservice.com](http://www.reliablecraneservice.com)





Crane Rental • Heavy Machinery Moving • Project Management

[sales@reliablecraneservice.com](mailto:sales@reliablecraneservice.com) • 702-525-0840 or 702-400-2516



**FOR REFERENCE USE ONLY!**

Please consult Reliable Crane Service for more information.

702-400-2516 or 702-525-0840  
[sales@reliablecraneservice.com](mailto:sales@reliablecraneservice.com)

[www.reliablecraneservice.com](http://www.reliablecraneservice.com)



Crane Rental • Heavy Machinery Moving • Project Management

sales@reliablecraneservice.com • 702-525-0840 or 702-400-2516



**FOR REFERENCE USE ONLY!**  
Please consult Reliable Crane Service for more information.

702-400-2516 or 702-525-0840  
sales@reliablecraneservice.com

[www.reliablecraneservice.com](http://www.reliablecraneservice.com)





Crane Rental • Heavy Machinery Moving • Project Management

sales@reliablecraneservice.com • 702-525-0840 or 702-400-2516



**FOR REFERENCE USE ONLY!**  
Please consult Reliable Crane Service for more information.

702-400-2516 or 702-525-0840  
sales@reliablecraneservice.com

[www.reliablecraneservice.com](http://www.reliablecraneservice.com)