

JMG Cranes S.p.A.

Sales & Service Office
Via Bergamo, 142
26100 Cremona - Italy
t +39 0372 1786738
Production Plant
Via Sito Nuovo 14
29010 Sarmato (PC) - Italy
t +39 0523 8486
e info@jmgcranes.com



Data subject to change without prior notice
Edition 03/2020 © 2020 JMG Cranes S.p.A. All rights reserved
Rev.1 - 03/20



Electric
Pick & Carry
Cranes

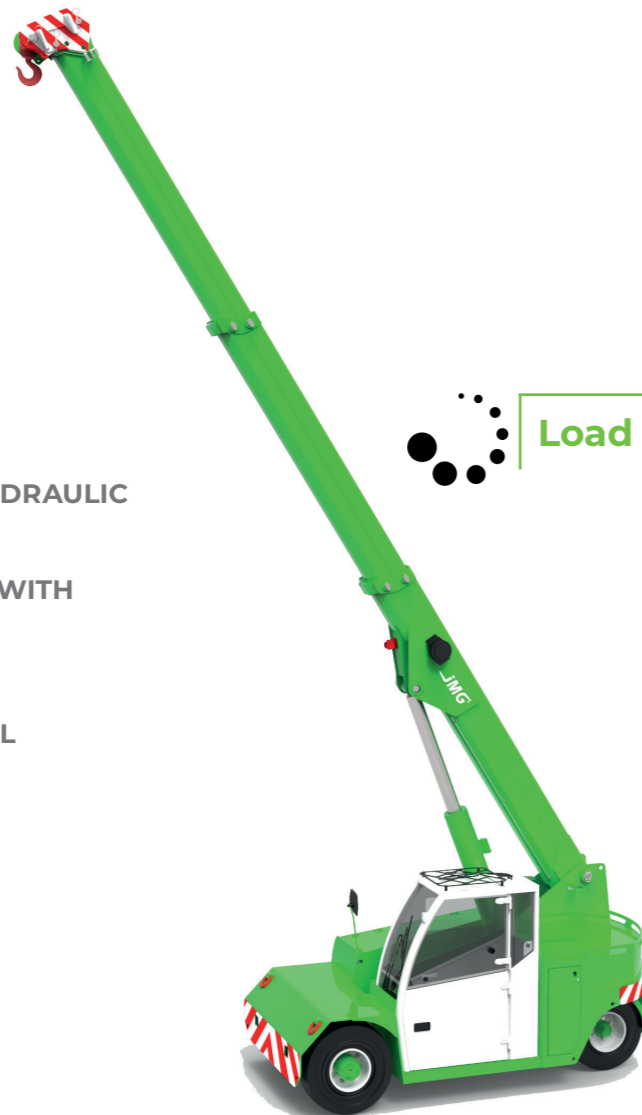


MC 85 (inch)
Max Capacity 18,700 lbs

www.jmgcranes.com



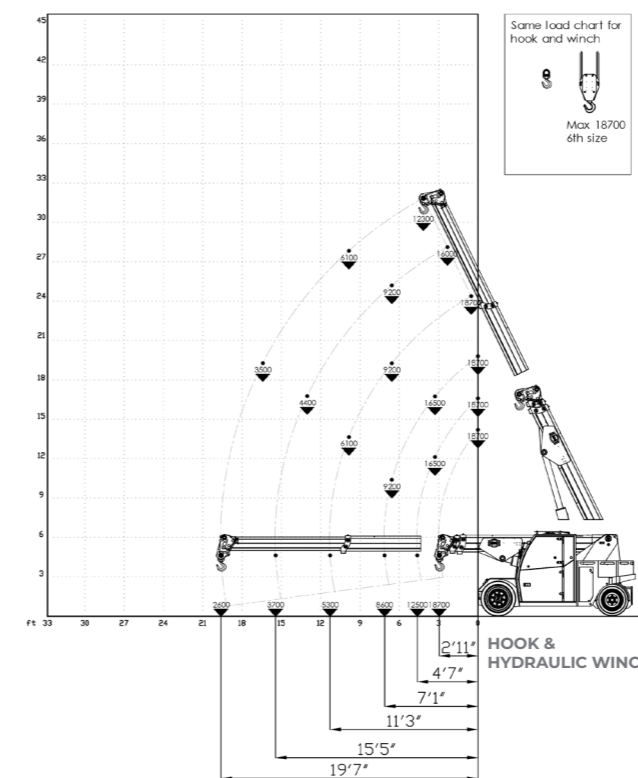
HYDRAULICALLY TELESCOPING PROPORTIONALLY TYPE BOOM
FRONT-WHEELS DRIVE WITH COUNTER ROTATION
180° REAR STEERING



Options :

- HYDRAULIC WINCH
- HYDRAULIC JIB WITH HYDRAULIC EXTENSION
- BENDABLE MANUAL JIB WITH MANUAL EXTENSION
- NON-MARKING TIRES
- RADIO REMOTE CONTROL
- HYDRAULIC FORKS
- MAN BUCKET
- ATEX CONVERSIONS
- CUSTOMIZED PAINTING

Load charts



i

Technical features

Max Capacity lbs	18,700
Dimension inch	11'12"x5'7"x6'3"

	Front-wheels drive. 2 electric motors AC 7,5 kW 72V Insulation class H	LMI	Electronic safe load indicator and tilting moment limiter
	Total lbs 20,000		Hydraulically foot controlled service brake on all wheels, hydraulically automatic or button controlled parking brake on front wheels
	Front nr. 2 superelastic 355x65/15" Rear nr. 2 superelastic 7.50/15"		Fabricated from preformed and welded quality steel plate
	Rear Steering angle -90°/+90°		+60°/-15°
			Motor driven pump 1x16 kW-72 V AC

EU Standards CE

	UNI ISO 4030-1: A1
	2006/42/CE- 2000/14/CE -2014/30 UE 2014/35/UE - D.Lgs 262/2002 subsequent modifications
	EN 13000:2014 subsequent modifications

Dimensions

