

JMG Cranes S.p.A.

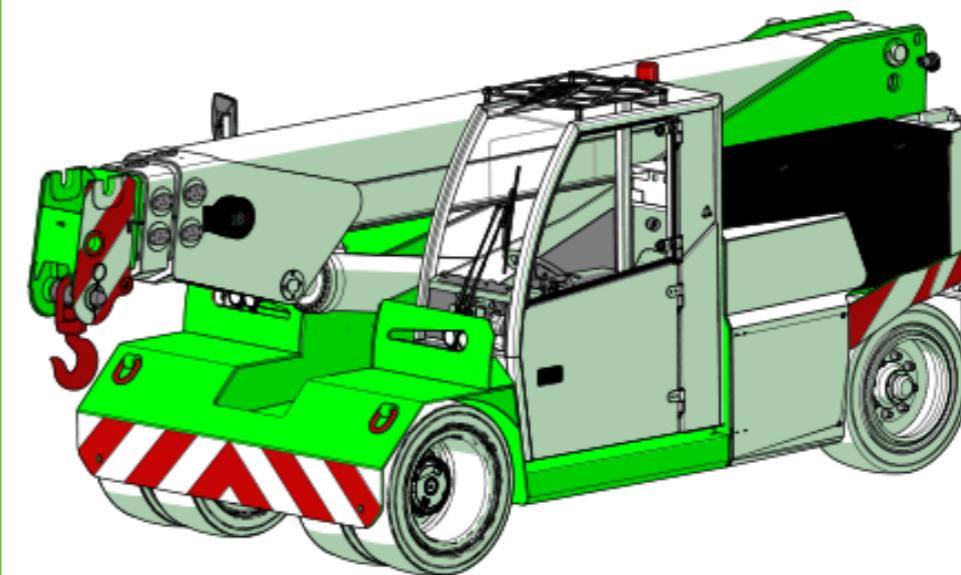
Sales & Service Office
Via Bergamo, 142
26100 Cremona - Italy
t +39 0372 1786738
Production Plant
Via Sito Nuovo 14
29010 Sarmato (PC) - Italy
t +39 0523 8486
e info@jmgcranes.com



Data subject to change without prior notice
Edition 03/2020 © 2020 JMG Cranes S.p.A. All rights reserved
Rev.1 - 03/20



Electric
Pick & Carry
Cranes



MC 160 (inch)
Max Capacity 35,000 lbs

www.jmgcranes.com





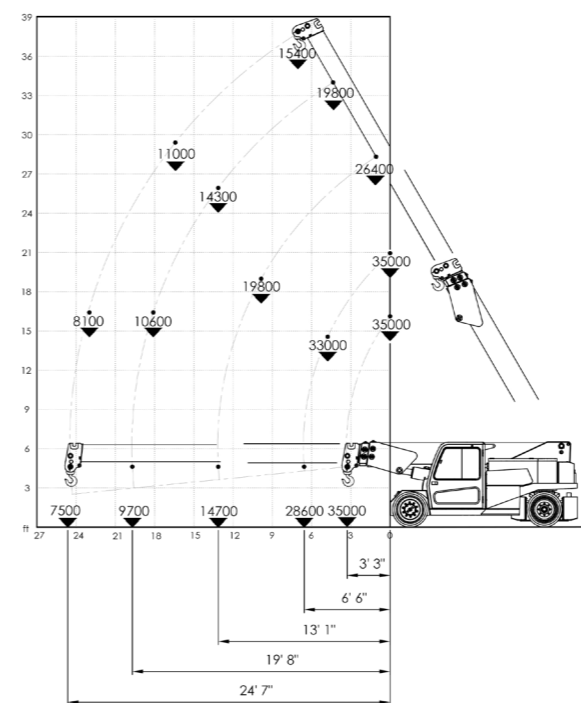
FRONT-WHEELS DRIVE WITH COUNTER ROTATION
HYDRAULICALLY TELESCOPING PROPORTIONALLY TYPE BOOM
REMOVABLE COUNTERWEIGHTS
180° REAR STEERING

Options :

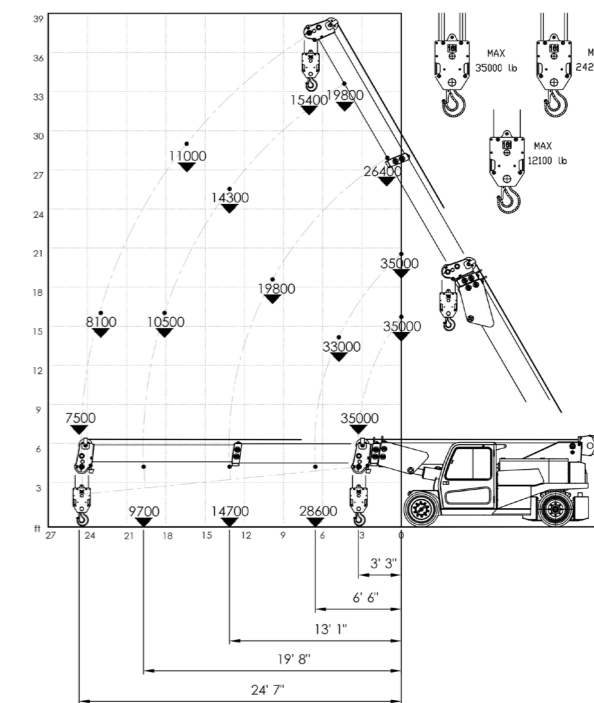
- HYDRAULIC WINCH
- HYDRAULIC JIB WITH HYDRAULIC EXTENSION
- BENDABLE MANUAL JIB WITH MANUAL EXTENSION
- NON-MARKING TIRES
- RADIO REMOTE CONTROL
- HYDRAULIC FORKS
- MAN BUCKET
- ATEX CONVERSIONS
- CUSTOMIZED PAINTING

Load charts

HOOK



HYDRAULIC WINCH



i

Technical features

Max Capacity lbs	35,200
Dimension inch	14'5"x6'9"x6'7"

Front-wheels drive. 2 electric motors AC 10 kW 96V Insulation class H	LMI Electronic safe load indicator and tilting moment limiter
Total lbs 43,400 Removable counterweights lbs 11,000	Hydraulically foot controlled service brake on all wheels, hydraulically automatic or button controlled parking brake on front wheels
96 V - 1035 Ah 8 working hours	Fabricated from preformed and welded quality steel plate
Front nr. 4 superelastic 355/50-20" Rear nr. 2 superelastic 355/50-20"	+60°/-8°
Rear Steering angle -90°/+90°	Motor driven pump 1x24 kW-96 V AC, 1x12 kW-96 V AC

EU Standards CE

	UNI ISO 4030-1: A1
	2006/42/CE- 2000/14/CE -2014/30 UE 2014/35/UE - D.Lgs 262/2002 subsequent modifications
	EN 13000:2014 subsequent modifications

Dimensions

