

JMG Cranes S.p.A.

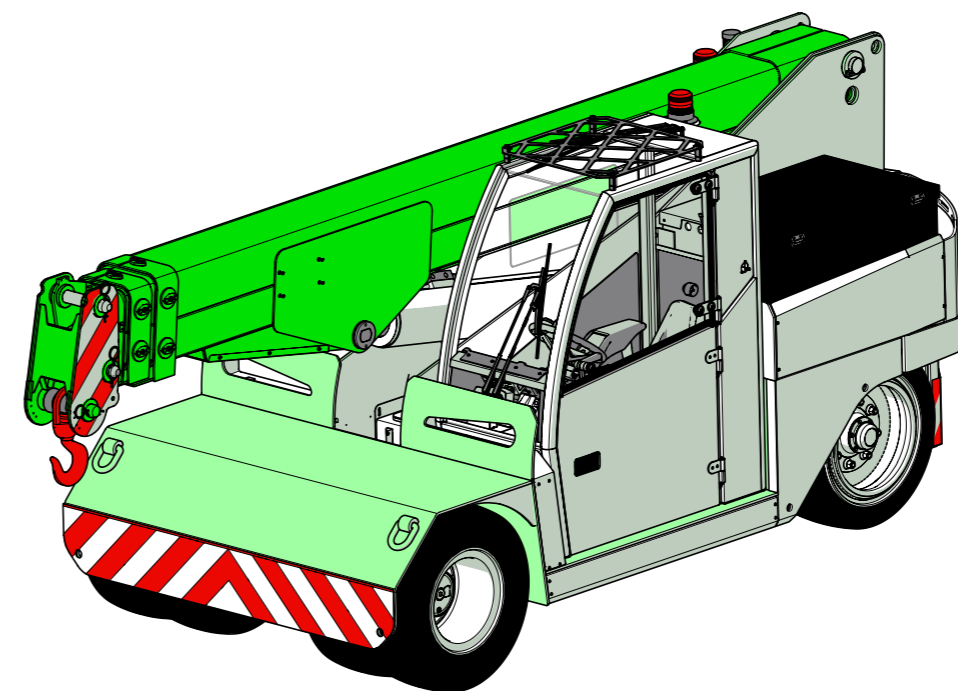
Sales & Service Office
Via Bergamo, 142
26100 Cremona - Italy
t +39 0372 1786738
Production Plant
Via Sito Nuovo 14
29010 Sarmato (PC) - Italy
t +39 0523 8486
e info@jmgcranes.com



Data subject to change without prior notice
Edition 03/2020 © 2020 JMG Cranes S.p.A. All rights reserved
Rev.1 - 03/20



Electric Pick & Carry Cranes



MC 110 (inch)
Max Capacity 24,200 lbs

www.jmgcranes.com



HYDRAULICALLY TELESCOPING PROPORTIONALLY TYPE BOOM
FRONT-WHEELS DRIVE WITH COUNTER ROTATION
REMOVABLE COUNTERWEIGHTS
180° REAR STEERING



Options :

- HYDRAULIC WINCH
- HYDRAULIC JIB WITH HYDRAULIC EXTENSION
- BENDABLE MANUAL JIB WITH MANUAL EXTENSION
- NON-MARKING TIRES
- RADIO REMOTE CONTROL
- HYDRAULIC FORKS
- MAN BUCKET
- ATEX CONVERSIONS
- CUSTOMIZED PAINTING

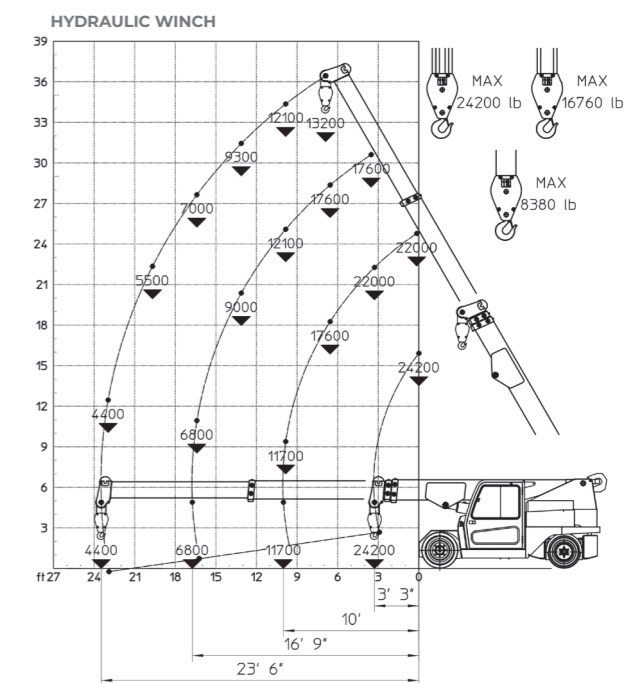
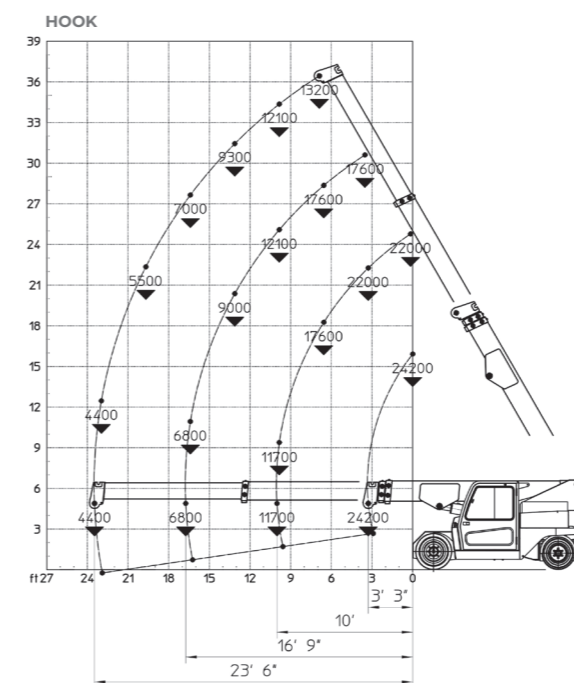
i

Technical features

Max Capacity lbs	24,200
Dimension inch	13'2"x6'5"x6'7"

Front-wheels drive. 2 electric motors AC 7,5 kW 80V Insulation class H	LMI Electronic safe load indicator and tilting moment limiter
Total Kg. lbs 29,600 Removable counterweights lbs 6,600	Hydraulically foot controlled service brake on all wheels, hydraulically automatic or button controlled parking brake on front wheels
80 V - 840 Ah 8 working hours	Fabricated from preformed and welded quality steel plate
Front nr. 4 superelastic 300-15" Rear nr. 2 superelastic 250-15"	+60°/-8°
Rear Steering angle -90°/+90°	Motor driven pump 1x16 kW-80 V AC

Load charts



EU Standards CE

	UNI ISO 4030-1: A1
	2006/42/CE- 2000/14/CE -2014/30 UE 2014/35/UE - D.Lgs 262/2002 subsequent modifications
	EN 13000:2014 subsequent modifications

Dimensions

