

JMG Cranes S.p.A.

Sales & Service Office

Via Bergamo, 142

26100 Cremona - Italy

t +39 0372 1786738

Production Plant

Via Sito Nuovo 14

29010 Sarmato (PC) - Italy

t +39 0523 8486

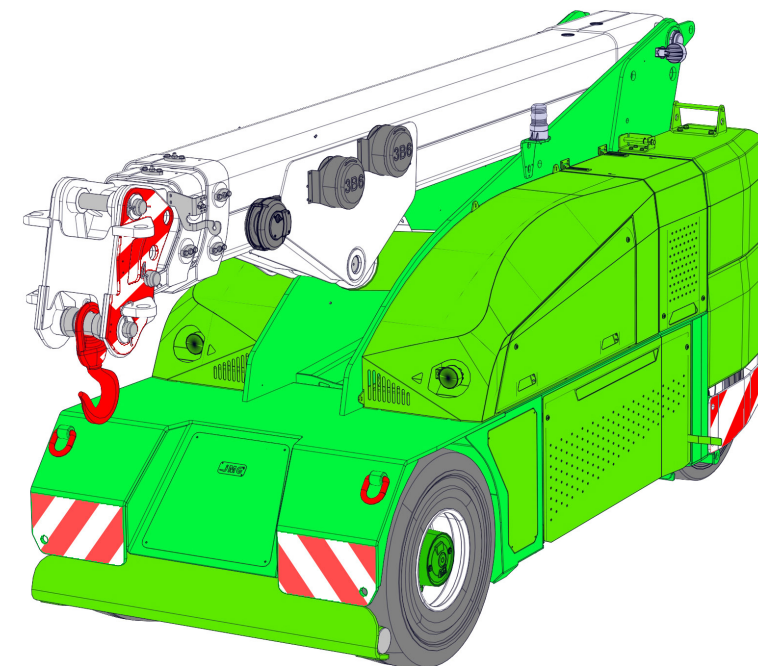
e info@jmgcranes.com



Data subject to change without prior notice
Edition 03/2020 © 2020 JMG Cranes S.p.A. All rights reserved
Rev.1 - 03/20



Electric Pick & Carry Cranes



MC 100S (inch)
Max Capacity 22,000 lbs

www.jmgcranes.com



MC 100S

RADIO-REMOTE CONTROL ON DRIVING, STEERING, BOOM MOVEMENTS, WINCH AND OTHER ACCESSORIES

FRONT-WHEELS DRIVE WITH COUNTER ROTATION

REMOVABLE COUNTERWEIGHTS

HYDRAULICALLY TELESCOPING PROPORTIONALLY TYPE BOOM

FRONT STABILISING BAR

Options :

- HYDRAULIC WINCH
- HYDRAULIC JIB WITH HYDRAULIC EXTENSION
- BENDABLE MANUAL JIB WITH MANUAL EXTENSION
- NON-MARKING TIRES
- HYDRAULIC FORKS
- MAN BUCKET
- ATEX CONVERSIONS
- CUSTOMIZED PAINTING



i

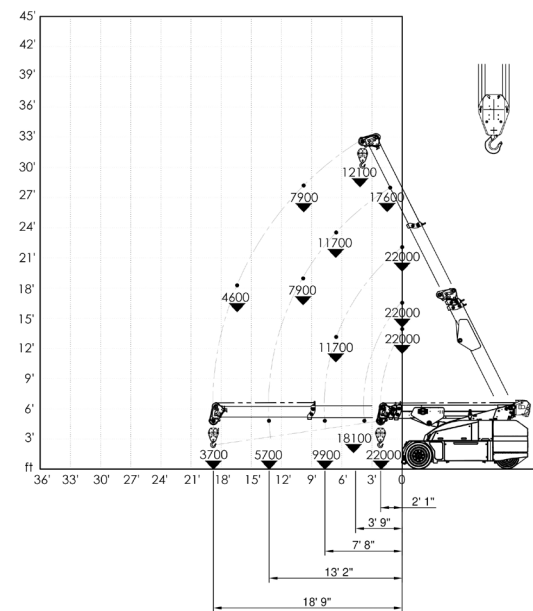
Technical features

Max Capacity lbs	22,000
Dimensions inch	12'5"x4'10"x6'4"

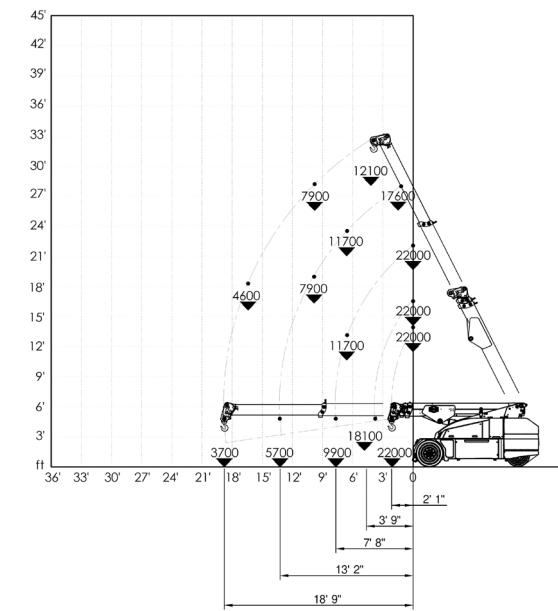
Front-wheels drive. 2 electric motors AC 7,5 kW 80V Insulation class H	LMI Electronic safe load indicator and tilting moment limiter
Total lbs 25,000 Removable counterweights lbs 9,000	Automatic braking system on all wheels
80 V - 810 Ah 8 working hours	Fabricated from preformed and welded quality steel plate
Front nr. 2 superelastic 355-15" Rear nr. 2 superelastic 250-15"	+65°/-10°
Rear Steering angle -90°/+90°	Motor driven pump 20 kW - 80 V AC, Insulation class H

Load charts

HYDRAULIC WINCH

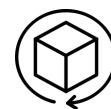


MANUAL JIB



EU Standards CE

	UNI ISO 4030-1: A1
	2006/42/CE- 2000/14/CE -2014/30 UE 2014/35/UE - D.Lgs 262/2002 subsequent modifications
	EN 13000:2014 subsequent modifications



Dimensions

