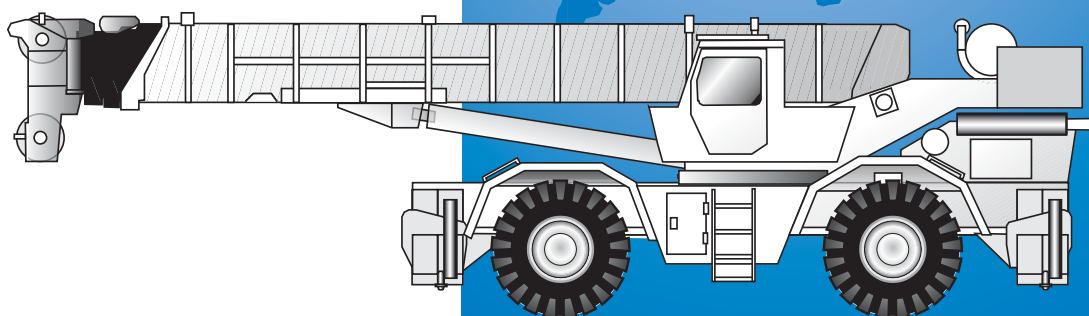


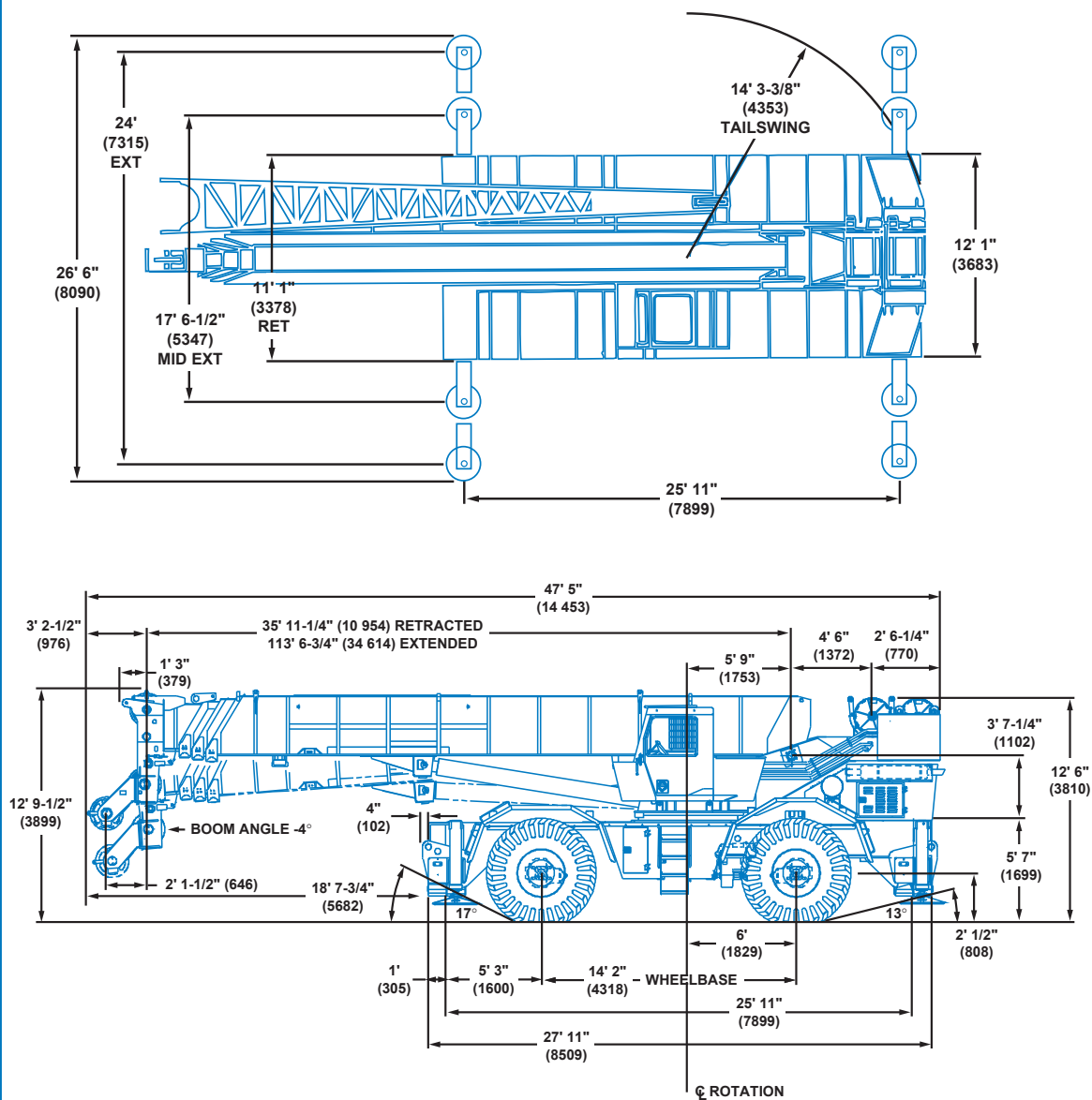


RT880



Rough Terrain Hydraulic Crane

Dimensions



Note: () Reference dimensions in mm

Turning Radius 25' (7620 mm)

Front Axle Load 51,829 lbs. (23 509 kg)

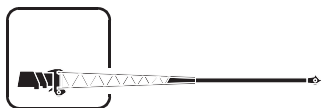
Rear Axle Load 58,045 lbs. (26 329 kg)

Gross Vehicle Weight 109,874 lbs. (49 838 kg)

Working range



POWER PINNED
36 - 114 ft. (11.0 - 34.7 m)



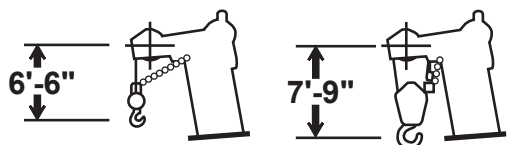
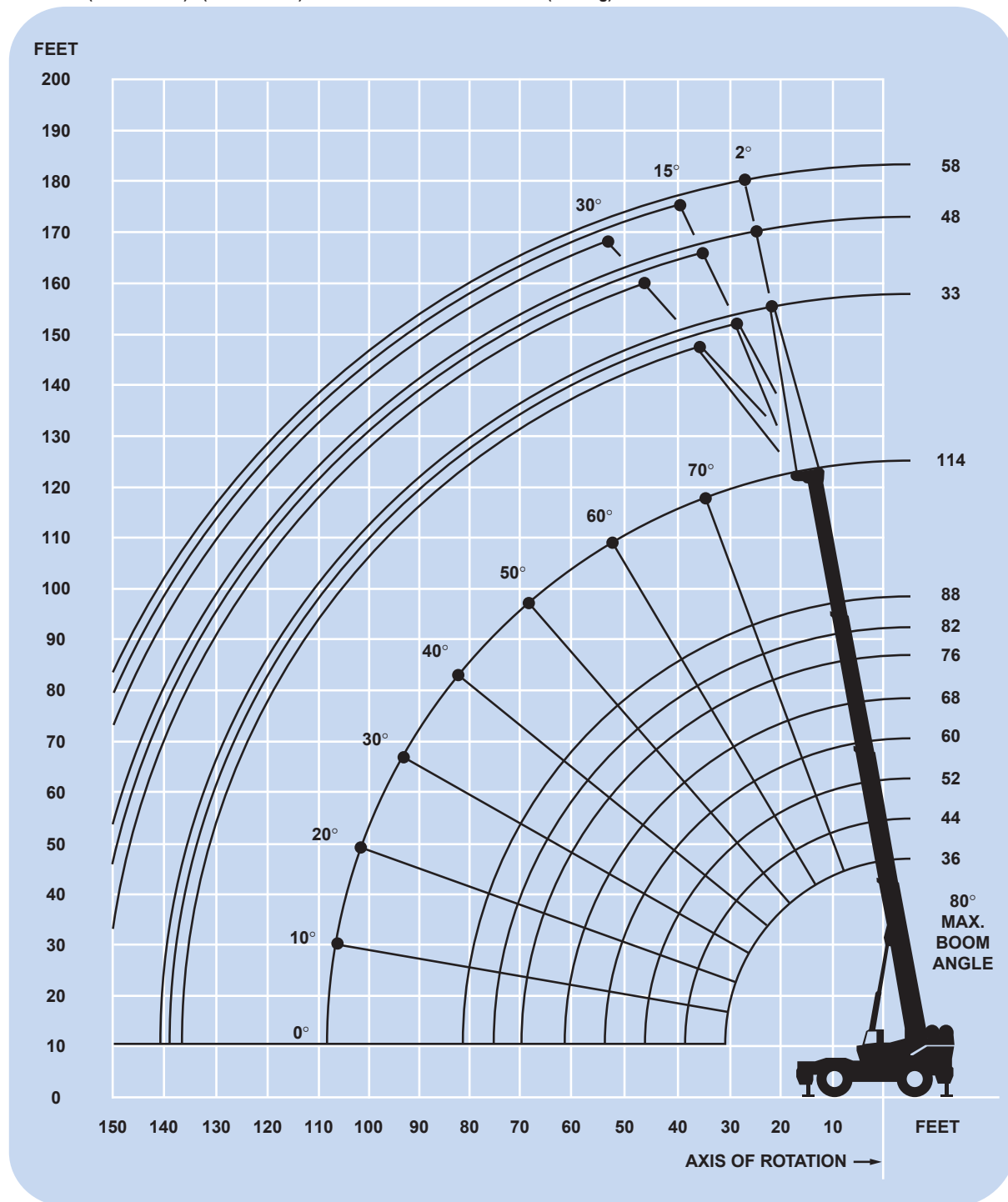
33 - 58 ft.
(10.0 - 17.7 m)



14,000 lbs.
(6350 kg)



360°



DIMENSIONS ARE FOR LARGEST GROVE FURNISHED HOOK BLOCK AND HEADACHE BALL, WITH ANTI-TWO BLOCK ACTIVATED.

Superstructure specifications

Boom

36 ft. - 114 ft. (11.0 m - 34.7 m) four-section power pinned boom. Maximum tip height: 122 ft. (37.1 m).

*Optional Boom

36 ft. - 114 ft. (11.0 m - 34.7 m) four-section full power boom. Maximum tip height: 122 ft. (37.1 m).

Swingaway Extension

33 ft. (10.0 m) lattice swingaway boom extension. Offsettable at 2°, 15° or 30°. Stows alongside base boom section. Maximum tip height: 153 ft. (46.6 m).

*Optional Telescopic Swingaway

33 ft. - 58 ft. (10 m - 17.7 m) telescoping lattice swingaway extension offsettable at 2°, 15° or 30°. Stows alongside base boom section. Maximum tip height: 178 ft. (54.2 m).

*Optional Jib

14 ft. (4.3 m) lattice sections combine with a 32 ft. (9.8 m) tip section to provide 46 ft. (14.0 m), 60 ft. (18.2 m), 74 ft. (22.5 m) and 88 ft. (26.8 m) jib lengths. Jib is cable suspended and can be offset at 5°, 17° and 30°. Maximum tip height: 206 ft. (62.7 m).

Boom Nose

Six Nylatron sheaves mounted on heavy duty tapered roller bearings with removable pin-type rope guards. Removable auxiliary boom nose with removable pin type rope guard.

Boom Elevation

Two double acting hydraulic cylinders with integral holding valves provide elevation from -4° to 80°.

Load Moment & Anti-Two Block System

Standard load moment and anti-two block system with audio-visual warning and control lever lockout. These systems provide electronic display of boom angle, length, radius, tip height, relative load moment, maximum permissible load, load indication and warning of impending two-block condition.

Cab

Full vision, all steel fabricated with acoustical lining and tinted safety glass throughout. Complete driving controls and engine instrumentation. Dash mounted control levers for all craning functions. Other standard features include: hinged skylight, sliding left side door and sliding right side window, electric windshield wash-wipe, propane heater, circulating air fan, fire extinguisher, seat belt and manual skylight wiper.

Swing

Ball bearing swing circle with 360° continuous rotation. Planetary glide-swing with foot applied multi-disc brake. Spring applied hydraulically released parking brake, one position mechanical house lock and hand operated 360° mechanical house lock, operated from cab. Maximum speed: 2.0 RPM.

Counterweight

Integral with turntable mast. (P.P. boom)

With main hoist only: 14,000 lbs. (6350 kg)

With main & aux.: 12,050 lbs. (5466 kg)

*Optional (F.P. boom)

With main hoist only: 13,200 lbs. (5988 kg)

With main & aux.: 11,250 lbs. (5103 kg)

Hydraulic System

Four main pumps with a combined capacity of 178 GPM (674 LPM).

Maximum operating pressure: 2500 psi (172.4 bar).

Four individual valve banks.

Return line type filter with full flow by-pass protection and service indicator. Replaceable cartridge with micron filtration rating of 7/17/22.

225 gallon (852 L) reservoir. Remote mounted oil cooler with thermostatically controlled electric motor driven fan/air to oil.

System pressure test panel with quick release type fittings for each circuit.

Hoist Specifications Main and *Auxiliary Hoist

Planetary reduction with automatic spring applied multi-disc brake. Electronic hoist drum rotation indicator, and hoist drum cable followers.

| | HO30B - 26G | |
|-------------------------------|--------------------------------|-------------|
| | High Range | Low Range |
| Maximum Single | 7,655 lbs. | 15,309 lbs. |
| Line Pull: (1st Layer) | (3473 kg) | (6944 kg) |
| Maximum Single | 548 FPM | 140 FPM |
| Line Speed: (5th Layer) | (167 m/min) | (43 m/min) |
| Maximum Permissible Line Pull | 12,920 lbs. | |
| w/5:1 Strength Factor: | (5860 kg) | |
| Rope Diameter: | 3/4" (19 mm) 18 x 19 Class | |
| Rope Length: | 750 ft. (229 m) | |
| | Supplied with Basic Std. unit. | |
| Maximum Rope Stowage: | 968 ft. (295 m) | |
| | (3/4" 18 x 19 Class) | |

*Denotes optional equipment

Carrier specifications

Chassis

Box section frame fabricated from high-strength, alloy steel. Integral outrigger housings and front/rear towing and tie down lugs.

Outrigger System

Four hydraulic telescoping single-stage, double box beam outriggers with inverted jacks and integral holding valves. Three position setting. All steel fabricated, quick release type outrigger floats, 30.5" (775 mm) diameter.

Maximum outrigger pad load: 110,973 lbs. (51 211 kg).

Outrigger Controls

Controls and crane level indicator located in cab.

Engine

Cummins 6CTA 8.3 L diesel, six cylinders, turbocharged, 250 bhp (186 kW) (Gross) @ 2,200 RPM.

Maximum torque: 794 ft. lbs. (1077 Nm) @ 1,500 RPM.

*Optional Engine

Caterpillar 3306C - DITA diesel, six cylinders, naturally aspirated, 250 bhp (186 kW) (Gross) @ 2,100 RPM.

Maximum torque: 845 ft. lbs. (1146 Nm) @ 1,400 RPM.

Fuel Tank Capacity

100 gallons (379 L)

Transmission

Full powershift with 6 forward and 6 reverse speeds.

Rear axle disconnect for 4 x 2 travel.

Electrical System

Two 12 V - maintenance free batteries.

12 V starting/lighting.

Drive

4 x 4.

Steering

Fully independent power steering:

Front: Full hydraulic steering wheel controlled.

Rear: Full hydraulic hand lever controlled.

Provides infinite variations of 4 main steering modes: front only, rear only, crab and coordinated.

Rear steer indicating gauge.

Axles

Front: Drive/steer with differential and planetary reduction hubs rigid mounted to chassis.

Rear: Drive/steer with differential and planetary reduction hubs pivot mounted to frame at the center of chassis providing up to 12" (305 mm) oscillation.

Oscillation Lockouts

Automatic full hydraulic lockouts on rear axle permits oscillation only with boom centered over the front.

*Oscillation lockout override control.

Brakes

Full air split circuit operating on all wheels.

Spring-applied, air released parking brake operating on front axles.

Tires

29.5 x 25 - 28PR (E-3) Bias earthmover type, tubeless.

*Optional: 33.25 x 29 - 26PR.

Lights

Full lighting including turn indicators, head, tail, brake, and hazard warning lights.

Maximum Speed

18.7 MPH (30.1 kph).

Gradeability (Theoretical)

127% (Based on 118,000 lbs. [53 525 kg] GVW)

29.5 x 25 tires, pumps disengaged.

Miscellaneous Standard Equipment

Full width steel fenders, dual rear view mirrors, electronic back-up alarm, light package, air dryer, tire inflation kit, A/V warning system, 360° mechanical house lock, cab work lights.

*Optional Equipment

*Hookblocks/headache ball

*Spare wheel assembly

*Pintle hook front/rear

*Tow winch (front mounted - max. single line pull: 15,000 lbs. [6804 kg]; max. speed: 92 FPM [28 m/min])

*Cab spotlight

*360° flashing light

*Engine block heater

*Tool kit

*Dual base boom mounted flood lights

*Diesel heater/defroster

*Tire inflation kit

*Emergency steering pump

*Air conditioning

*LMI light bar

**Denotes optional equipment*



POWER PINNED
36 - 114 ft.
(11.0 - 34.7 m)



14,000 lbs. (6350 kg)
*12,050 lbs. (5466 kg)



100%
26' 6" (8.9 m)
Spread



360°



Pounds

| | | | | | | | | | Power Pin. Fly Ext. & 88 ft. |
|--|-------------------|-------------------|-------------------|------------------|------------------|------------------|------------------|------------------|---------------------------------------|
| (Feet) | 36 | 44 | 52 | 60 | 68 | 76 | 82 | 88 | 114 |
| 10 | *160,000 (67) | 106,700 (71.5) | 101,600 (74.5) | 100,000 (77) | 96,700 (79) | | | | |
| 12 | 120,000 (63) | 106,700 (68.5) | 101,600 (72) | 96,500 (75) | 87,850 (77) | 84,700 (78.5) | | | |
| 15 | 103,450 (57.5) | 103,450 (64) | 95,300 (68.5) | 84,900 (72) | 79,180 (74.5) | 77,550 (76) | 70,250 (77.5) | 64,500 (79) | |
| 20 | 80,650 (47) | 80,650 (56.5) | 80,650 (62.5) | 70,550 (66.5) | 64,310 (70) | 63,800 (72) | 59,400 (74) | 55,000 (75.5) | 38,750 (80) |
| 25 | 62,200 (34) | 62,200 (48) | 62,200 (55.5) | 60,150 (61) | 54,000 (65.5) | 49,700 (67.5) | 47,150 (70.5) | 45,600 (72) | 34,000 (77) |
| 30 | | 48,450 (38) | 48,450 (48.5) | 48,450 (55.5) | 46,650 (60.5) | 42,750 (63.5) | 40,450 (66.5) | 39,150 (68.5) | 30,300 (74.5) |
| 35 | | 39,500 (24.5) | 39,500 (40.5) | 39,500 (49.5) | 39,500 (55.5) | 37,300 (58.5) | 35,200 (62.5) | 34,050 (65) | 27,250 (71.5) |
| 40 | | | 31,220 (30.5) | 31,220 (42.5) | 31,220 (50) | 31,220 (54) | 31,000 (58.5) | 29,550 (61.5) | 24,750 (69) |
| 45 | | | 24,800 (14.5) | 24,800 (34.5) | 24,800 (44) | 24,800 (49) | 24,800 (54) | 24,800 (57.5) | 22,650 (66) |
| 50 | | | | 19,880 (24) | 19,880 (37.5) | 19,880 (43.5) | 19,880 (49.5) | 19,880 (53.5) | 20,800 (63) |
| 60 | | | | | 13,280 (17.5) | 13,280 (30.5) | 13,280 (39) | 13,280 (44) | 17,050 (57) |
| 70 | | | | | | | 9,200 (24.5) | 9,200 (33) | 12,480 (50.5) |
| 80 | | | | | | | | 6,180 (14) | 9,100 (43) |
| 90 | | | | | | | | | 6,670 (34.5) |
| 100 | | | | | | | | | 4,710 (23) |
| Minimum boom angle (deg.) for indicated length (no load) | | | | | | | | 0 | 0 |
| Maximum boom length (ft.) at 0 deg. boom angle (no load) | | | | | | | | 88 | 114 |

NOTE: () Boom angles are in degrees.

*13 parts of line required to lift this capacity (using aux. boom nose). Refer to Operator's and Safety Handbook for reeving diagram.

A6-829-012485A

| Boom Angle | 36 | 44 | 52 | 60 | 68 | 76 | 82 | 88 |
|---------------|------------------|------------------|------------------|------------------|-----------------|-----------------|-----------------|-----------------|
| 0° | 25,100 (30.2) | 18,350 (38.3) | 13,700 (46.3) | 10,300 (54.3) | 7,730 (62.3) | 5,670 (70.3) | 4,350 (76.3) | 3,260 (81.9) |

NOTE: () Reference radii in feet.

A6-829-009499B



POWER PINNED
36 - 114 ft.
(11.0 - 34.7 m)



14,000 lbs. (6350 kg)
*12,050 lbs. (5466 kg)



100%
26' 6" (8.9 m)
Spread



OVER FRONT



Pounds

Power
Pin.
Fly Ext.
& 88 ft.

| (Feet) | 36 | 44 | 52 | 60 | 68 | 76 | 82 | 88 | 114 |
|--|-------------------|-------------------|-------------------|------------------|------------------|------------------|------------------|------------------|------------------|
| 10 | *160,000 (67) | 106,700 (71.5) | 101,600 (74.5) | 100,000 (77) | 96,700 (79) | | | | |
| 12 | 120,000 (63) | 106,700 (68.5) | 101,600 (72) | 96,500 (75) | 87,850 (77) | 84,700 (78.5) | | | |
| 15 | 103,450 (57.5) | 103,450 (64) | 95,300 (68.5) | 84,900 (72) | 79,180 (74.5) | 77,550 (76) | 70,250 (77.5) | 64,500 (79) | |
| 20 | 80,650 (47) | 80,650 (56.5) | 80,650 (62.5) | 70,550 (66.5) | 64,310 (70) | 63,800 (72) | 59,400 (74) | 55,000 (75.5) | 38,750 (80) |
| 25 | 62,200 (34) | 62,200 (48) | 62,200 (55.5) | 60,150 (61) | 54,000 (65.5) | 49,700 (67.5) | 47,150 (70.5) | 45,600 (72) | 34,000 (77) |
| 30 | | 48,450 (38) | 48,450 (48.5) | 48,450 (55.5) | 46,650 (60.5) | 42,750 (63.5) | 40,450 (66.5) | 39,150 (68.5) | 30,300 (74.5) |
| 35 | | 39,500 (24.5) | 39,500 (40.5) | 39,500 (49.5) | 39,500 (55.5) | 37,300 (58.5) | 35,200 (62.5) | 34,050 (65) | 27,250 (71.5) |
| 40 | | | 34,400 (30.5) | 34,400 (42.5) | 34,400 (50) | 32,900 (54) | 31,000 (58.5) | 29,550 (61.5) | 24,750 (69) |
| 45 | | | 29,250 (14.5) | 29,250 (34.5) | 29,250 (44) | 29,250 (49) | 27,500 (54) | 26,550 (57.5) | 22,650 (66) |
| 50 | | | | 24,350 (24) | 24,350 (37.5) | 24,350 (43.5) | 24,350 (49.5) | 23,750 (53.5) | 20,800 (63) |
| 60 | | | | | 17,060 (17.5) | 17,060 (30.5) | 17,060 (39) | 17,060 (44) | 17,900 (57) |
| 70 | | | | | | | 12,000 (24.5) | 12,000 (33) | 14,550 (50.5) |
| 80 | | | | | | | | 8,560 (14) | 11,250 (43) |
| 90 | | | | | | | | | 8,670 (34.5) |
| 100 | | | | | | | | | 6,560 (23) |
| Minimum boom angle (deg.) for indicated length (no load) | | | | | | | | 0 | 0 |
| Maximum boom length (ft.) at 0 deg. boom angle (no load) | | | | | | | | 88 | 114 |

NOTE: () Boom angles are in degrees.

*13 parts of line required to lift this capacity (using aux. boom nose). Refer to Operator's and Safety Handbook for reeving diagram.

A6-829-012489A

| Boom Angle | 36 | 44 | 52 | 60 | 68 | 76 | 82 | 88 |
|---------------|------------------|------------------|------------------|------------------|-----------------|-----------------|-----------------|-----------------|
| 0° | 25,100 (30.2) | 18,350 (38.3) | 13,700 (46.3) | 10,300 (54.3) | 7,730 (62.3) | 5,670 (70.3) | 4,350 (76.3) | 3,260 (81.9) |

NOTE: () Reference radii in feet.

A6-829-009499B



POWER PINNED
36 - 114 ft.
(11.0 - 34.7 m)



14,000 lbs.
(6350 kg)



50%
17' 6-1/2" (5.35 m)
Spread



360°



Pounds

**Power
Pin.
Fly Ext.
& 88 ft.**

| (Feet) | 36 | 44 | 52 | 60 | 68 | 76 | 82 | 88 | 114 |
|--|------------------|-------------------|-------------------|------------------|------------------|------------------|------------------|------------------|------------------|
| 10 | 126,000 (67) | 106,500 (71.5) | 101,500 (74.5) | 100,000 (77) | 96,700 (79) | | | | |
| 12 | 111,500 (63) | 106,500 (68.5) | 101,500 (72) | 96,500 (75) | 87,850 (77) | 84,700 (78.5) | | | |
| 15 | 95,050 (57.5) | 95,050 (64) | 95,000 (68.5) | 84,900 (72) | 79,150 (74.5) | 77,550 (76) | 70,250 (77.5) | 64,500 (79) | |
| 20 | 68,950 (47) | 68,950 (56.5) | 68,800 (62.5) | 66,250 (66.5) | 63,900 (70) | 61,700 (72) | 59,400 (74) | 55,000 (75.5) | 38,750 (80) |
| 25 | 45,000 (34) | 45,000 (48) | 45,000 (55.5) | 45,000 (61) | 45,000 (65.5) | 43,800 (67.5) | 42,900 (70.5) | 42,050 (72) | 34,000 (77) |
| 30 | | 32,350 (38) | 32,350 (48.5) | 32,350 (55.5) | 32,350 (60.5) | 32,350 (63.5) | 32,250 (66.5) | 31,700 (68.5) | 30,300 (74.5) |
| 35 | | 23,950 (24.5) | 23,950 (40.5) | 23,950 (49.5) | 23,950 (55.5) | 23,950 (58.5) | 23,950 (62.5) | 23,950 (65) | 25,550 (71.5) |
| 40 | | | 18,200 (30.5) | 18,200 (42.5) | 18,200 (50) | 18,200 (54) | 18,200 (58.5) | 18,200 (61.5) | 20,750 (69) |
| 45 | | | 14,050 (14.5) | 14,050 (34.5) | 14,050 (44) | 14,050 (49) | 14,050 (54) | 14,050 (57.5) | 17,100 (66) |
| 50 | | | | 10,900 (24) | 10,900 (37.5) | 10,900 (43.5) | 10,900 (49.5) | 10,900 (53.5) | 14,200 (63) |
| 60 | | | | | 6,470 (17.5) | 6,470 (30.5) | 6,470 (39) | 6,470 (44) | 9,880 (57) |
| 70 | | | | | | | 3,470 (24.5) | 3,470 (33) | 6,730 (50.5) |
| 80 | | | | | | | | 1,320 (14) | 4,360 (43) |
| 90 | | | | | | | | | 2,580 (34.5) |
| 100 | | | | | | | | | 1,190 (23) |
| Minimum boom angle (deg.) for indicated length (no load) | | | | | | | | | 0 22 |
| Maximum boom length (ft.) at 0 deg. boom angle (no load) | | | | | | | | | 88 |

NOTE: () Boom angles are in degrees.

| Boom Angle | 36 | 44 | 52 | 60 | 68 | 76 | 82 |
|---------------|------------------|------------------|------------------|-----------------|-----------------|-----------------|-----------------|
| 0° | 25,100 (30.2) | 18,350 (38.3) | 13,150 (46.3) | 8,780 (54.3) | 5,690 (62.3) | 3,410 (70.3) | 2,050 (76.3) |

NOTE: () Reference radii in feet.

A6-829-015523



POWER PINNED
36 - 114 ft.
(11.0 - 34.7 m)



14,000 lbs.
(6350 kg)



0%
11' 1" (3.38 m)
Spread



360°



Pounds

**Power
Pin.
Fly Ext.
& 88 ft.**

| (Feet) | 36 | 44 | 52 | 60 | 68 | 76 | 82 | 88 | 114 |
|---|------------------|-------------------|------------------|------------------|------------------|------------------|------------------|------------------|------------------|
| 10 | 105,000 (67) | 105,000 (71.5) | 99,250 (74.5) | 93,200 (77) | 87,800 (79) | | | | |
| 12 | 73,600 (63) | 73,600 (68.5) | 73,600 (72) | 72,300 (75) | 68,800 (77) | 65,550 (78.5) | | | |
| 15 | 47,800 (57.5) | 47,800 (64) | 47,800 (68.5) | 47,800 (72) | 47,800 (74.5) | 47,800 (76) | 47,400 (77.5) | 46,100 (79) | |
| 20 | 28,600 (47) | 28,600 (56.5) | 28,600 (62.5) | 28,600 (66.5) | 28,600 (70) | 28,600 (72) | 28,600 (74) | 28,600 (75.5) | 30,900 (80) |
| 25 | 19,250 (34) | 19,250 (48) | 19,250 (55.5) | 19,250 (61) | 19,250 (65.5) | 19,250 (67.5) | 19,250 (70.5) | 19,250 (72) | 22,850 (77) |
| 30 | | 13,750 (38) | 13,750 (48.5) | 13,750 (55.5) | 13,750 (60.5) | 13,750 (63.5) | 13,750 (66.5) | 13,750 (68.5) | 17,450 (74.5) |
| 35 | | 9,670 (24.5) | 9,670 (40.5) | 9,670 (49.5) | 9,670 (55.5) | 9,670 (58.5) | 9,670 (62.5) | 9,670 (65) | 13,550 (71.5) |
| 40 | | | 6,750 (30.5) | 6,750 (42.5) | 6,750 (50) | 6,750 (54) | 6,750 (58.5) | 6,750 (61.5) | 10,450 (69) |
| 45 | | | 4,560 (14.5) | 4,560 (34.5) | 4,560 (44) | 4,560 (49) | 4,560 (54) | 4,560 (57.5) | 8,030 (66) |
| 50 | | | | 2,870 (24) | 2,870 (37.5) | 2,870 (43.5) | 2,870 (49.5) | 2,870 (53.5) | 6,130 (63) |
| 60 | | | | | | | | | 3,360 (57) |
| 70 | | | | | | | | | 1,460 (50.5) |
| Minimum boom angle (deg.) for indicated length (no load) | | | | 0 | 36.5 | 42.5 | 48.5 | 52.5 | 56 |
| Maximum boom length (ft.) at 0 deg. boom angle (no load) | | | | | | 60 | | | |

NOTE: () Boom angles are in degrees.

| Boom Angle | 36 | 44 | 52 | 60 |
|---------------|------------------|-----------------|-----------------|-----------------|
| 0° | 13,600 (30.2) | 7,670 (38.3) | 4,100 (46.3) | 1,710 (54.3) |

NOTE: () Reference radii in feet.

A6-829-015524



FULL POWER
36 - 114 ft.
(11.0 - 34.7 m)



13,200 lbs. (5988 kg)
*11,250 lbs. (5103 kg)



100%
26' 6" (8.9 m)
Spread



360°



Pounds

| (Feet) | 36 | 42 | 51 | 60 | 69 | 78 | 87 | 96 | 105 | 114 |
|--------|-------------------|-------------------|-------------------|------------------|------------------|------------------|------------------|------------------|------------------|------------------|
| 10 | *160,000 (67) | 106,700 (70.5) | 101,600 (74) | 100,000 (77) | 96,700 (79) | | | | | |
| 12 | 120,000 (63) | 106,700 (67.5) | 101,600 (71.5) | 96,500 (75) | 87,850 (77) | 84,700 (79) | | | | |
| 15 | 103,450 (57.5) | 103,450 (63) | 95,300 (68) | 84,900 (72) | 79,200 (74.5) | 77,550 (77) | 64,500 (79) | | | |
| 20 | 80,650 (47) | 80,650 (54.5) | 80,650 (61.5) | 70,550 (66.5) | 64,350 (70) | 63,800 (73) | 55,000 (75.5) | 51,900 (77) | 48,450 (78.5) | 38,750 (80) |
| 25 | 62,200 (34) | 62,200 (45.5) | 62,200 (55) | 60,150 (61) | 54,000 (65.5) | 49,700 (69) | 45,600 (72) | 43,600 (74) | 41,300 (76) | 34,000 (77) |
| 30 | | 48,450 (34) | 48,450 (47.5) | 48,450 (55.5) | 46,650 (61) | 42,750 (65) | 39,150 (68.5) | 38,400 (71) | 35,350 (73) | 30,300 (74.5) |
| 35 | | 39,500 (16.5) | 39,500 (39) | 39,500 (49.5) | 39,500 (56) | 37,300 (61) | 34,050 (64.5) | 32,700 (67.5) | 30,700 (70) | 27,250 (72) |
| 40 | | | 33,050 (28.5) | 33,050 (42.5) | 33,050 (50.5) | 32,900 (56.5) | 29,550 (61) | 28,850 (64.5) | 27,000 (67) | 24,750 (69) |
| 45 | | | | 26,350 (34.5) | 26,350 (45) | 26,350 (51.5) | 26,350 (57) | 25,650 (61) | 23,900 (64) | 22,650 (66.5) |
| 50 | | | | 21,400 (24) | 21,400 (38.5) | 21,400 (46.5) | 21,400 (52.5) | 21,400 (57.5) | 21,350 (61) | 20,800 (63.5) |
| 60 | | | | | 14,900 (20) | 14,900 (35) | 14,900 (43.5) | 14,900 (49.5) | 14,900 (54) | 14,900 (57.5) |
| 70 | | | | | | | 10,950 (32) | 10,950 (40.5) | 10,950 (46.5) | 10,950 (51) |
| 80 | | | | | | | 7,620 (12.5) | 7,620 (29.5) | 7,620 (38) | 7,620 (44) |
| 90 | | | | | | | | | 5,150 (27) | 5,150 (35.5) |
| 100 | | | | | | | | | | 3,240 (24.5) |

Minimum boom angle (deg.) for indicated length (no load)

0

Maximum boom length (ft.) at 0 deg. boom angle (no load)

114

NOTE: () Boom angles are in degrees.

*13 parts of line required to lift this capacity (using aux. boom nose).

A6-829-012385A

| Boom Angle | 36 | 42 | 51 | 60 | 69 | 78 | 87 | 96 |
|------------|------------------|------------------|------------------|------------------|-----------------|-----------------|-----------------|-----------------|
| 0° | 24,650 (30.2) | 19,400 (36.3) | 13,950 (45.3) | 10,100 (54.3) | 7,300 (63.3) | 5,120 (72.3) | 3,390 (81.3) | 1,970 (90.3) |

NOTE: () Reference radii in feet.

A6-829-009488



FULL POWER
36 - 114 ft.
(11.0 - 34.7 m)



13,200 lbs. (5988 kg)
*11,250 lbs. (5103 kg)



100%
26' 6" (8.9 m)
Spread



Over Front



Pounds

| (Feet) | 36 | 42 | 51 | 60 | 69 | 78 | 87 | 96 | 105 | 114 |
|--------|-------------------|-------------------|-------------------|------------------|------------------|------------------|------------------|------------------|------------------|------------------|
| 10 | *160,000 (67) | 106,700 (70.5) | 101,600 (74) | 100,000 (77) | 96,700 (79) | | | | | |
| 12 | 120,000 (63) | 106,700 (67.5) | 101,600 (71.5) | 96,500 (75) | 87,850 (77) | 84,700 (79) | | | | |
| 15 | 103,450 (57.5) | 103,450 (63) | 95,300 (68) | 84,900 (72) | 79,200 (74.5) | 77,550 (77) | 64,500 (79) | | | |
| 20 | 80,650 (47) | 80,650 (54.5) | 80,650 (61.5) | 70,550 (66.5) | 64,350 (70) | 63,800 (73) | 55,000 (75.5) | 51,900 (77) | 48,450 (78.5) | 38,750 (80) |
| 25 | 62,200 (34) | 62,200 (45.5) | 62,200 (55) | 60,150 (61) | 54,000 (65.5) | 49,700 (69) | 45,600 (72) | 43,600 (74) | 41,300 (76) | 34,000 (77) |
| 30 | | 48,450 (34) | 48,450 (47.5) | 48,450 (55.5) | 46,650 (61) | 42,750 (65) | 39,150 (68.5) | 38,400 (71) | 35,350 (73) | 30,300 (74.5) |
| 35 | | 39,500 (16.5) | 39,500 (39) | 39,500 (49.5) | 39,500 (56) | 37,300 (61) | 34,050 (64.5) | 32,700 (67.5) | 30,700 (70) | 27,250 (72) |
| 40 | | | 34,400 (28.5) | 34,400 (42.5) | 34,400 (50.5) | 32,900 (56.5) | 29,550 (61) | 28,850 (64.5) | 27,000 (67) | 24,750 (69) |
| 45 | | | | 29,250 (34.5) | 29,250 (45) | 29,250 (51.5) | 26,550 (57) | 25,650 (61) | 23,900 (64) | 22,650 (66.5) |
| 50 | | | | 25,750 (24) | 25,750 (38.5) | 25,750 (46.5) | 23,750 (52.5) | 22,700 (57.5) | 21,350 (61) | 20,800 (63.5) |
| 60 | | | | | 18,900 (20) | 18,900 (35) | 18,900 (43.5) | 18,400 (49.5) | 17,850 (54) | 17,450 (57.5) |
| 70 | | | | | | | 13,800 (32) | 13,800 (40.5) | 13,800 (46.5) | 13,800 (51) |
| 80 | | | | | | | 10,100 (12.5) | 10,100 (29.5) | 10,100 (38) | 10,100 (44) |
| 90 | | | | | | | | | 7,290 (27) | 7,290 (35.5) |
| 100 | | | | | | | | | | 5,070 (24.5) |

Minimum boom angle (deg.) for indicated length (no load)

0

Maximum boom length (ft.) at 0 deg. boom angle (no load)

114

NOTE: () Boom angles are in degrees.

*13 parts of line required to lift this capacity (using aux. boom nose).

A6-829-012386A

| Boom Angle | 36 | 42 | 51 | 60 | 69 | 78 | 87 | 96 |
|------------|------------------|------------------|------------------|------------------|-----------------|-----------------|-----------------|-----------------|
| 0° | 24,650 (30.2) | 19,400 (36.3) | 13,950 (45.3) | 10,100 (54.3) | 7,300 (63.3) | 5,120 (72.3) | 3,390 (81.3) | 1,970 (90.3) |

NOTE: () Reference radii in feet.

A6-829-009488



FULL POWER
36 - 114 ft.
(11.0 - 34.7 m)



13,200 lbs.
(5988 kg)



50%
17' 6-1/2" (5.35 m)
Spread



360°



Pounds

| (Feet) | 36 | 42 | 51 | 60 | 69 | 78 | 87 | 96 | 105 | 114 |
|--|------------------|-------------------|-------------------|------------------|------------------|------------------|------------------|------------------|------------------|------------------|
| 10 | 125,000 (67) | 106,700 (70.5) | 101,600 (74) | 100,000 (77) | 96,700 (79) | | | | | |
| 12 | 111,000 (63) | 106,700 (67.5) | 101,600 (71.5) | 96,500 (75) | 87,850 (77) | 84,700 (79) | | | | |
| 15 | 94,450 (57.5) | 94,650 (63) | 94,850 (68) | 84,900 (72) | 79,200 (74.5) | 77,550 (77) | 64,500 (79) | | | |
| 20 | 72,700 (47) | 72,300 (54.5) | 69,200 (61.5) | 67,050 (66.5) | 64,350 (70) | 62,350 (73) | 55,000 (75.5) | 51,900 (77) | 48,450 (78.5) | 38,750 (80) |
| 25 | 48,450 (34) | 48,450 (45.5) | 47,900 (55) | 46,900 (61) | 45,600 (65.5) | 44,250 (69) | 43,100 (72) | 41,950 (74) | 40,800 (76) | 34,000 (77) |
| 30 | | 34,450 (34) | 34,450 (47.5) | 34,450 (55.5) | 34,050 (61) | 33,200 (65) | 32,500 (68.5) | 31,700 (71) | 30,950 (73) | 30,250 (74.5) |
| 35 | | 25,750 (16.5) | 25,750 (39) | 25,750 (49.5) | 25,750 (56) | 25,700 (61) | 25,250 (64.5) | 24,700 (67.5) | 24,150 (70) | 23,700 (72) |
| 40 | | | 19,850 (28.5) | 19,850 (42.5) | 19,850 (50.5) | 19,850 (56.5) | 19,850 (61) | 19,600 (64.5) | 19,200 (67) | 18,850 (69) |
| 45 | | | | 15,550 (34.5) | 15,550 (45) | 15,550 (51.5) | 15,550 (57) | 15,550 (61) | 15,400 (64) | 15,150 (66.5) |
| 50 | | | | 12,300 (24) | 12,300 (38.5) | 12,300 (46.5) | 12,300 (52.5) | 12,300 (57.5) | 12,300 (61) | 12,200 (63.5) |
| 60 | | | | | 8,030 (20) | 8,030 (35) | 8,030 (43.5) | 8,030 (49.5) | 8,010 (54) | 7,860 (57.5) |
| 70 | | | | | | | 5,070 (32) | 4,990 (40.5) | 4,890 (46.5) | 4,790 (51) |
| 80 | | | | | | | 2,680 (12.5) | 2,640 (29.5) | 2,580 (38) | 2,500 (44) |
| Minimum boom angle (deg.) for indicated length (no load) | | | | | | | 0 | 28.5 | 37 | 43 |
| Maximum boom length (ft.) at 0 deg. boom angle (no load) | | | | | | | | 87 | | |

NOTE: () Boom angles are in degrees.

| Boom Angle | 36 | 42 | 51 | 60 | 69 | 78 | 87 |
|------------|------------------|------------------|------------------|------------------|-----------------|-----------------|-----------------|
| 0° | 24,650 (30.2) | 19,400 (36.3) | 13,950 (45.3) | 10,100 (54.3) | 6,710 (63.3) | 4,260 (72.3) | 2,420 (81.3) |

NOTE: () Reference radii in feet.

A6-829-014558



FULL POWER
36 - 114 ft.
(11.0 - 34.7 m)



13,200 lbs.
(5988 kg)



0%
11' 1" (3.35 m)
Spread



360°



Pounds

| (Feet) | 36 | 42 | 51 | 60 | 69 | 78 | 87 | 96 | 105 | 114 |
|---|------------------|-------------------|------------------|------------------|------------------|-----------------|------------------|------------------|------------------|------------------|
| 10 | 104,500 (67) | 105,000 (70.5) | 100,500 (74) | 94,650 (77) | 88,800 (79) | | | | | |
| 12 | 85,100 (63) | 81,850 (67.5) | 77,000 (71.5) | 73,350 (75) | 69,600 (77) | 66,100 (79) | | | | |
| 15 | 55,250 (57.5) | 55,250 (63) | 55,250 (68) | 53,600 (72) | 51,400 (74.5) | 49,250 (77) | 47,350 (79) | | | |
| 20 | 32,750 (47) | 32,750 (54.5) | 32,750 (61.5) | 32,750 (66.5) | 32,750 (70) | 32,750 (73) | 31,950 (75.5) | 30,950 (77) | 29,950 (78.5) | 29,100 (80) |
| 25 | 21,800 (34) | 21,800 (45.5) | 21,800 (55) | 21,800 (61) | 21,800 (65.5) | 21,800 (69) | 21,800 (72) | 21,800 (74) | 21,550 (76) | 21,000 (77) |
| 30 | | 15,350 (34) | 15,350 (47.5) | 15,350 (55.5) | 15,350 (61) | 15,350 (65) | 15,350 (68.5) | 15,350 (71) | 15,350 (73) | 15,350 (74.5) |
| 35 | | 11,050 (16.5) | 11,050 (39) | 11,050 (49.5) | 11,050 (56) | 11,050 (61) | 11,050 (64.5) | 11,050 (67.5) | 11,050 (70) | 11,050 (72) |
| 40 | | | 8,050 (28.5) | 8,050 (42.5) | 8,050 (50.5) | 8,050 (56.5) | 8,050 (61) | 8,050 (64.5) | 8,050 (67) | 8,050 (69) |
| 45 | | | | 5,780 (34.5) | 5,780 (45) | 5,780 (51.5) | 5,780 (57) | 5,780 (61) | 5,780 (64) | 5,780 (66.5) |
| 50 | | | | 4,030 (24) | 4,030 (38.5) | 4,030 (46.5) | 4,030 (52.5) | 4,030 (57.5) | 4,030 (61) | 4,030 (63.5) |
| 60 | | | | | 1,710 (20) | 1,710 (35) | 1,710 (43.5) | 1,700 (49.5) | 1,620 (54) | 1,530 (57.5) |
| Minimum boom angle (deg.) for indicated length (no load) | | | | 0 | 19 | 34 | 42.5 | 48.5 | 53 | 56.5 |
| Maximum boom length (ft.) at 0 deg. boom angle (no load) | | | | | | | 60 | | | |

NOTE: () Boom angles are in degrees.

| Boom Angle | 36 | 42 | 51 | 60 |
|------------|------------------|------------------|-----------------|-----------------|
| 0° | 15,100 (30.2) | 10,050 (36.3) | 5,610 (45.3) | 2,820 (54.3) |

NOTE: () Reference radii in feet.

A6-829-014559



POWER PINNED and FULL POWER
36 - 114 ft.
(11.0 - 34.7 m)



33 ft.
(10.0 m)



14,000 lbs. (6350 kg) POWER PINNED
13,200 lbs. (5988 kg) FULL POWER



100%
26' 6" (8.9 m)
Spread



360°



Pounds

| (Feet) | 2° OFFSET | 15° OFFSET | 30° OFFSET |
|--------|------------------|-----------------|------------------|
| 25 | 23,000 (80) | | |
| 30 | 20,250 (78) | *15,700 (80) | |
| 35 | 17,950 (76) | 14,200 (78) | *11,500 (80) |
| 40 | 16,250 (74) | 12,750 (76) | 11,100 (79.5) |
| 45 | 15,050 (71.5) | 11,500 (74) | 10,150 (77) |
| 50 | 13,950 (69.5) | 10,450 (72) | 9,320 (75) |
| 55 | 12,750 (67.5) | 9,590 (69.5) | 8,600 (72.5) |
| 60 | 11,600 (65) | 8,810 (67.5) | 7,970 (70.5) |
| 65 | 10,650 (63) | 8,110 (65) | 7,410 (68) |
| 70 | 9,780 (60.5) | 7,480 (63) | 6,890 (65.5) |
| 75 | 8,920 (58) | 6,920 (60.5) | 6,420 (63) |
| 80 | 8,110 (55.5) | 6,430 (58) | 6,000 (60.5) |
| 85 | 7,400 (53) | 5,980 (55.5) | 5,610 (58) |
| 90 | 6,530 (50.5) | 5,570 (53) | 5,250 (55) |
| 95 | 5,460 (48) | 5,190 (50) | 4,920 (52.5) |
| 100 | 4,510 (45) | 4,510 (47.5) | 4,510 (49.5) |
| 105 | 3,670 (42) | 3,670 (44.5) | 3,670 (46) |
| 110 | 2,910 (39) | 2,910 (41) | 2,910 (42.5) |
| 115 | 2,230 (35.5) | 2,230 (37.5) | 2,230 (39) |

NOTE: () Boom angles are in degrees.

*This capacity is based on maximum boom angle.

A6-829-012490



POWER PINNED and FULL POWER
36 - 114 ft.
(11.0 - 34.7 m)



33 ft.
(10.0 m)



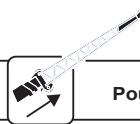
14,000 lbs. (6350 kg) POWER PINNED
13,200 lbs. (5988 kg) FULL POWER



50%
17' 6-1/2" (5.35 m)
Spread



360°



Pounds

| (Feet) | 2° OFFSET | 15° OFFSET | 30° OFFSET |
|--------|------------------|-----------------|------------------|
| 25 | 23,000 (80) | | |
| 30 | 20,250 (78) | *15,700 (80) | |
| 35 | 17,950 (76) | 14,200 (78) | *11,500 (80) |
| 40 | 16,250 (74) | 12,750 (76) | 11,100 (79.5) |
| 45 | 15,050 (71.5) | 11,500 (74) | 10,150 (77) |
| 50 | 12,750 (69.5) | 10,450 (72) | 9,320 (75) |
| 55 | 10,500 (67.5) | 9,590 (69.5) | 8,600 (72.5) |
| 60 | 8,650 (65) | 8,810 (67.5) | 7,970 (70.5) |
| 65 | 7,060 (63) | 8,110 (65) | 7,410 (68) |
| 70 | 5,700 (60.5) | 6,660 (63) | 6,890 (65.5) |
| 75 | 4,520 (58) | 5,390 (60.5) | 5,620 (63) |
| 80 | 3,490 (55.5) | 4,270 (58) | 4,440 (60.5) |
| 85 | 2,580 (53) | 3,290 (55.5) | 3,410 (58) |
| 90 | 1,770 (50.5) | 2,410 (53) | 2,510 (55) |
| 95 | 1,050 (48) | 1,630 (50) | 1,710 (52.5) |
| 100 | | | 1,000 (49.5) |

NOTE: () Boom angles are in degrees.

*This capacity is based on maximum boom angle.

A6-829-014561A



POWER PINNED and FULL POWER
36 - 114 ft.
(11.0 - 34.7 m)



33 - 58 ft.
(10.0 - 17.7 m)



14,000 lbs. (6350 kg) POWER PINNED
13,200 lbs. (5988 kg) FULL POWER



100%
26' 6" (8.9 m)
Spread



360°



Pounds

| (Feet) | 33 ft. LENGTH | | | 48 ft. LENGTH | | | 58 ft. LENGTH | | |
|--------|------------------|-----------------|------------------|------------------|-----------------|-----------------|-----------------|-----------------|-----------------|
| | 2° OFFSET | 15° OFFSET | 30° OFFSET | 2° OFFSET | 15° OFFSET | 30° OFFSET | 2° OFFSET | 15° OFFSET | 30° OFFSET |
| 25 | 22,500 (80) | | | *15,500 (80) | | | | | |
| 30 | 19,700 (78) | *15,150 (80) | | 14,850 (79.5) | | | *10,300 (80) | | |
| 35 | 17,400 (76) | 13,650 (78) | *10,950 (80) | 13,150 (77.5) | *10,000 (80) | | 9,890 (79) | | |
| 40 | 15,700 (74) | 12,200 (76) | 10,550 (79.5) | 11,600 (75.5) | 9,635 (79.5) | | 9,370 (77) | *7,780 (80) | |
| 45 | 14,500 (71.5) | 10,950 (74) | 9,620 (77) | 10,350 (74) | 8,780 (77.5) | *7,140 (80) | 8,860 (75) | 7,540 (79.5) | |
| 50 | 13,400 (69.5) | 9,930 (72) | 8,780 (75) | 9,310 (72) | 7,980 (75.5) | 6,910 (79.5) | 8,080 (73.5) | 6,920 (77.5) | |
| 55 | 12,200 (67.5) | 9,050 (69.5) | 8,060 (72.5) | 8,430 (70) | 7,290 (73.5) | 6,390 (77.5) | 7,320 (71.5) | 6,330 (76) | 5,530 (80) |
| 60 | 11,050 (65) | 8,270 (67.5) | 7,430 (70.5) | 7,650 (68) | 6,690 (71.5) | 5,910 (75.5) | 6,640 (70) | 5,820 (74) | 5,110 (78) |
| 65 | 10,100 (63) | 7,570 (65) | 6,870 (68) | 6,970 (66) | 6,160 (69.5) | 5,480 (73) | 6,070 (68) | 5,370 (72) | 4,750 (76) |
| 70 | 9,240 (60.5) | 6,940 (63) | 6,350 (65.5) | 6,360 (64) | 5,680 (67.5) | 5,110 (71) | 5,570 (66) | 4,970 (70) | 4,420 (74) |
| 75 | 8,380 (58) | 6,380 (60.5) | 5,880 (63) | 5,820 (62) | 5,250 (65.5) | 4,760 (69) | 5,130 (64) | 4,610 (68.5) | 4,130 (72) |
| 80 | 7,570 (55.5) | 5,890 (58) | 5,460 (60.5) | 5,340 (59.5) | 4,860 (63.5) | 4,430 (67) | 4,730 (62.5) | 4,280 (66.5) | 3,860 (70) |
| 85 | 6,860 (53) | 5,440 (55.5) | 5,070 (58) | 4,910 (57.5) | 4,500 (61) | 4,130 (64.5) | 4,360 (60.5) | 3,970 (64.5) | 3,610 (68) |
| 90 | 5,760 (50.5) | 5,030 (53) | 4,710 (55) | 4,530 (55.5) | 4,170 (59) | 3,860 (62) | 4,030 (58.5) | 3,700 (62.5) | 3,370 (66) |
| 95 | 4,690 (48) | 4,650 (50) | 4,380 (52.5) | 4,180 (53) | 3,880 (56.5) | 3,600 (60) | 3,730 (56) | 3,440 (60) | 3,160 (63.5) |
| 100 | 3,740 (45) | 3,740 (47.5) | 3,740 (49.5) | 3,860 (50.5) | 3,600 (54.5) | 3,370 (57.5) | 3,450 (54) | 3,200 (58) | 2,960 (61) |
| 105 | 2,900 (42) | 2,900 (44.5) | 2,900 (46) | 3,560 (48.5) | 3,350 (52) | 3,160 (55) | 3,200 (52) | 2,980 (56) | 2,780 (59) |
| 110 | 2,130 (39) | 2,130 (41) | 2,130 (42.5) | 3,290 (45.5) | 3,120 (49.5) | 2,950 (52) | 2,970 (49.5) | 2,770 (53.5) | 2,600 (56.5) |
| 115 | 1,450 (35.5) | 1,450 (37.5) | 1,450 (39) | 2,690 (43) | 2,690 (46.5) | 2,690 (49.5) | 2,760 (47.5) | 2,580 (51) | 2,440 (54) |
| 120 | | | | 2,040 (40) | 2,040 (44) | 2,040 (46.5) | 2,560 (45) | 2,410 (48.5) | 2,280 (51.5) |
| 125 | | | | 1,450 (37) | 1,450 (40.5) | 1,450 (43) | 2,240 (42.5) | 2,240 (46) | 2,140 (49) |
| 130 | | | | | | | 1,690 (39.5) | 1,690 (43.5) | 1,690 (46) |
| 135 | | | | | | | 1,190 (37) | 1,190 (40.5) | 1,190 (42.5) |

NOTE: () Boom angles are in degrees.

*This capacity is based on maximum boom angle.

A6-829-012491A



POWER PINNED and FULL POWER
36 - 114 ft.
(11.0 - 34.7 m)



33 - 58 ft.
(10.0 - 17.7 m)



14,000 lbs. (6350 kg) POWER PINNED
13,200 lbs. (5988 kg) FULL POWER



50%
17' 6-1/2" (5.35 m)
Spread



360°



Pounds

| (Feet) | 33 ft. LENGTH | | | 48 ft. LENGTH | | | 58 ft. LENGTH | | |
|--------|------------------|-----------------|------------------|------------------|-----------------|-----------------|-----------------|-----------------|-----------------|
| | 2° OFFSET | 15° OFFSET | 30° OFFSET | 2° OFFSET | 15° OFFSET | 30° OFFSET | 2° OFFSET | 15° OFFSET | 30° OFFSET |
| 25 | 22,500 (80) | | | *15,500 (80) | | | | | |
| 30 | 19,700 (78) | *15,150 (80) | | 14,850 (79.5) | | | *10,300 (80) | | |
| 35 | 17,400 (76) | 13,650 (78) | *10,950 (80) | 13,150 (77.5) | *10,000 (80) | | 9,890 (79) | | |
| 40 | 15,700 (74) | 12,200 (76) | 10,550 (79.5) | 11,600 (75.5) | 9,635 (79.5) | | 9,370 (77) | *7,780 (80) | |
| 45 | 14,500 (71.5) | 10,950 (74) | 9,620 (77) | 10,350 (74) | 8,780 (77.5) | *7,140 (80) | 8,860 (75) | 7,540 (79.5) | |
| 50 | 11,900 (69.5) | 9,930 (72) | 8,780 (75) | 9,310 (72) | 7,980 (75.5) | 6,910 (79.5) | 8,080 (73.5) | 6,920 (77.5) | |
| 55 | 9,630 (67.5) | 9,050 (69.5) | 8,060 (72.5) | 8,430 (70) | 7,290 (73.5) | 6,390 (77.5) | 7,320 (71.5) | 6,330 (76) | 5,530 (80) |
| 60 | 7,750 (65) | 8,270 (67.5) | 7,430 (70.5) | 7,650 (68) | 6,690 (71.5) | 5,910 (75.5) | 6,640 (70) | 5,820 (74) | 5,110 (78) |
| 65 | 6,150 (63) | 7,250 (65) | 6,870 (68) | 6,970 (66) | 6,160 (69.5) | 5,480 (73) | 6,070 (68) | 5,370 (72) | 4,750 (76) |
| 70 | 4,790 (60.5) | 5,780 (63) | 6,350 (65.5) | 5,970 (64) | 5,680 (67.5) | 5,110 (71) | 5,570 (66) | 4,970 (70) | 4,420 (74) |
| 75 | 3,610 (58) | 4,500 (60.5) | 5,410 (63) | 4,790 (62) | 5,250 (65.5) | 4,760 (69) | 5,130 (64) | 4,610 (68.5) | 4,130 (72) |
| 80 | 2,570 (55.5) | 3,390 (58) | 4,190 (60.5) | 3,770 (59.5) | 4,860 (63.5) | 4,430 (67) | 4,420 (62.5) | 4,280 (66.5) | 3,860 (70) |
| 85 | 1,660 (53) | 2,400 (55.5) | 3,120 (58) | 2,860 (57.5) | 3,910 (61) | 4,130 (64.5) | 3,520 (60.5) | 3,970 (64.5) | 3,610 (68) |
| 90 | | 1,520 (53) | 2,160 (55) | 2,050 (55.5) | 3,010 (59) | 3,860 (62) | 2,710 (58.5) | 3,700 (62.5) | 3,370 (66) |
| 95 | | | 1,290 (52.5) | 1,320 (53) | 2,200 (56.5) | 3,090 (60) | 1,990 (56) | 3,040 (60) | 3,160 (63.5) |
| 100 | | | | | 1,480 (54.5) | 2,280 (57.5) | 1,340 (54) | 2,310 (58) | 2,960 (61) |
| 105 | | | | | | 1,530 (55) | | 1,640 (56) | 2,360 (59) |
| 110 | | | | | | | | 1,030 (53.5) | 1,680 (56.5) |
| 115 | | | | | | | | | 1,070 (54) |

NOTE: () Boom angles are in degrees.

*This capacity is based on maximum boom angle.

A6-829-014560A



POWER PINNED
36 - 114 ft.
(11.0 - 34.7 m)



14,000 lbs.
(6350 kg)



Stationary



360°

29.5 x 25 (28 Ply) Tires



(Feet)



Pounds

| | 36 | 44 | 52 | 60 | 68 |
|----|------------------|------------------|------------------|-----------------|-----------------|
| 10 | 53,800 (67) | 38,000 (71.5) | | | |
| 12 | 43,210 (63) | 31,000 (68.5) | | | |
| 15 | 32,960 (57.5) | 24,000 (64) | | | |
| 20 | 21,630 (47) | 17,000 (56.5) | | | |
| 25 | 15,510 (34) | 15,510 (48) | 12,000 (55.5) | 12,000 (61) | |
| 30 | | 10,670 (38) | 8,000 (48.5) | 8,000 (55.5) | |
| 35 | | 7,540 (24.5) | 7,540 (40.5) | 6,000 (49.5) | 6,000 (55.5) |
| 40 | | | 4,900 (30.5) | 4,000 (42.5) | 4,000 (50) |
| 45 | | | 2,970 (14.5) | 2,970 (34.5) | 2,970 (44) |
| 50 | | | | 1,620 (24) | 1,620 (37.5) |

NOTE: () Boom angles are in degrees.

A6-829-009057A

| Boom Angle | 36 | 44 | 52 |
|------------|------------------|-----------------|-----------------|
| 0° | 10,552 (30.2) | 5,820 (38.3) | 2,550 (46.3) |

NOTE: () Reference radii in feet.

A6-829-009499B



POWER PINNED
36 - 114 ft.
(11.0 - 34.7 m)



14,000 lbs.
(6350 kg)



Stationary



Defined Arc
Over Front
±6°

29.5 x 25 (28 Ply) Tires



(Feet)



Pounds

| | 36 | 44 | 52 | 60 | 68 | 76 | 82 | 88 |
|----|------------------|------------------|------------------|------------------|------------------|------------------|------------------|------------------|
| 10 | 79,500 (67) | 38,000 (71.5) | | | | | | |
| 12 | 67,500 (63) | 38,000 (68.5) | | | | | | |
| 15 | 58,070 (57.5) | 38,000 (64) | | | | | | |
| 20 | 46,850 (47) | 38,000 (56.5) | | | | | | |
| 25 | 37,100 (34) | 37,100 (48) | 29,000 (55.5) | 29,000 (61) | | | | |
| 30 | | 27,760 (38) | 24,000 (48.5) | 24,000 (55.5) | | | | |
| 35 | | 20,210 (24.5) | 20,210 (40.5) | 18,500 (49.5) | 18,500 (55.5) | 18,500 (58.5) | 18,500 (62.5) | 18,500 (65) |
| 40 | | | 15,420 (30.5) | 15,420 (42.5) | 15,000 (50) | 15,000 (54) | 15,000 (58.5) | 15,000 (61.5) |
| 45 | | | 12,150 (14.5) | 12,150 (34.5) | 12,150 (44) | 11,000 (49) | 11,000 (54) | 11,000 (57.5) |
| 50 | | | | 9,640 (24) | 9,640 (37.5) | 9,500 (43.5) | 9,500 (49.5) | 9,500 (53.5) |
| 60 | | | | | 5,920 (17.5) | 5,920 (30.5) | 5,800 (39) | 5,800 (44) |
| 70 | | | | | | | 3,360 (24.5) | 3,000 (33) |
| 80 | | | | | | | | 1,380 (14) |

NOTE: () Boom angles are in degrees.

A6-829-009056A

| Boom Angle | 36 | 44 | 52 | 60 | 68 | 76 | 82 | 88 |
|------------|------------------|------------------|------------------|-----------------|-----------------|-----------------|-----------------|-----------------|
| 0° | 25,100 (30.2) | 16,750 (38.3) | 11,400 (46.3) | 7,840 (54.3) | 5,220 (62.3) | 3,310 (70.3) | 2,110 (76.3) | 1,000 (81.9) |

NOTE: () Reference radii in feet.

A6-829-009499B



POWER PINNED
36 - 114 ft.
(11.0 - 34.7 m)



14,000 lbs.
(6350 kg)



Pick & Carry
Up to 2.5 MPH



Boom Centered
Over Front

29.5 x 25 (28 Ply) Tires



(Feet)



Pounds

| | 36 | 44 | 52 | 60 | 68 | 76 | 82 |
|----|------------------|------------------|------------------|------------------|------------------|------------------|------------------|
| 10 | 68,830 (67) | 38,000 (71.5) | | | | | |
| 12 | 59,920 (63) | 38,000 (68.5) | | | | | |
| 15 | 49,740 (57.5) | 38,000 (64) | | | | | |
| 20 | 37,980 (47) | 30,000 (56.5) | 30,000 (62.5) | 30,000 (66.5) | 30,000 (70) | | |
| 25 | 30,830 (34) | 26,000 (48) | 26,000 (55.5) | 26,000 (61) | 23,000 (65.5) | 23,000 (67.5) | |
| 30 | | 25,040 (38) | 18,000 (48.5) | 18,000 (55.5) | 18,000 (60.5) | 18,000 (63.5) | 18,000 (66.5) |
| 35 | | 19,910 (24.5) | 17,000 (40.5) | 17,000 (49.5) | 17,000 (55.5) | 17,000 (58.5) | 14,000 (62.5) |
| 40 | | | 15,420 (30.5) | 14,000 (42.5) | 11,000 (50) | 11,000 (54) | 11,000 (58.5) |
| 45 | | | 12,150 (14.5) | 12,000 (34.5) | 8,500 (44) | 8,500 (49) | 8,500 (54) |
| 50 | | | | 9,640 (24) | 7,000 (37.5) | 7,000 (43.5) | 7,000 (49.5) |
| 60 | | | | | 3,330 (17.5) | 3,330 (30.5) | 3,330 (39) |
| 70 | | | | | | | 1,160 (24.5) |

NOTE: () Boom angles are in degrees.

A6-829-009058A

| Boom Angle | 36 | 44 | 52 | 60 | 68 | 76 |
|------------|------------------|------------------|------------------|-----------------|-----------------|-----------------|
| 0° | 24,800 (30.2) | 16,750 (38.3) | 11,400 (46.3) | 4,860 (54.3) | 2,760 (62.3) | 1,110 (70.3) |

NOTE: () Reference radii in feet.

A6-829-009499B



POWER PINNED
36 - 114 ft.
(11.0 - 34.7 m)



14,000 lbs.
(6350 kg)



Stationary



360°

33.25 x 29 Tires



(Feet)



Pounds

| | 36 | 44 | 52 | 60 | 68 |
|----|------------------|------------------|------------------|------------------|------------------|
| 10 | 64,800 (67) | | | | |
| 12 | 52,400 (63) | | | | |
| 15 | 39,850 (57.5) | | | | |
| 20 | 24,030 (47) | 21,200 (56.5) | 21,200 (62.5) | | |
| 25 | 16,680 (34) | 16,680 (48) | 15,350 (55.5) | 15,350 (61) | 15,350 (65.5) |
| 30 | | 11,160 (38) | 11,150 (48.5) | 11,150 (55.5) | 11,150 (60.5) |
| 35 | | 7,770 (24.5) | 7,770 (40.5) | 7,770 (49.5) | 7,770 (55.5) |
| 40 | | | 5,210 (30.5) | 5,210 (42.5) | 5,210 (50) |
| 45 | | | 3,170 (14.5) | 3,170 (34.5) | 3,170 (44) |
| 50 | | | | 1,780 (24) | 1,780 (37.5) |

NOTE: () Boom angles are in degrees.

A6-829-009521B

| Boom Angle | 36 | 44 | 52 | 60 |
|------------|------------------|-----------------|-----------------|-----------------|
| 0° | 11,000 (30.2) | 6,030 (38.3) | 2,760 (46.3) | 1,000 (54.3) |

NOTE: () Reference radii in feet.

A6-829-009503B



POWER PINNED
36 - 114 ft.
(11.0 - 34.7 m)



14,000 lbs.
(6350 kg)



Stationary



Defined Arc
Over Front
±6°

33.25 x 29 Tires



(Feet)

Pounds

| | 36 | 44 | 52 | 60 | 68 | 76 | 82 | 88 |
|----|------------------|------------------|------------------|------------------|------------------|------------------|------------------|------------------|
| 10 | 94,000 (67) | | | | | | | |
| 12 | 80,400 (63) | | | | | | | |
| 15 | 67,300 (57.5) | | | | | | | |
| 20 | 54,300 (47) | 43,000 (56.5) | 41,050 (62.5) | | | | | |
| 25 | 39,060 (34) | 39,060 (48) | 32,100 (55.5) | 32,100 (61) | 32,100 (65.5) | | | |
| 30 | | 28,250 (38) | 25,650 (48.5) | 25,650 (55.5) | 25,650 (60.5) | | | |
| 35 | | 20,600 (24.5) | 20,600 (40.5) | 20,600 (49.5) | 20,600 (55.5) | 20,600 (58.5) | | |
| 40 | | | 15,760 (30.5) | 15,760 (42.5) | 15,760 (50) | 15,760 (54) | 15,760 (58.5) | 15,760 (61.5) |
| 45 | | | 12,440 (14.5) | 12,440 (34.5) | 12,440 (44) | 12,440 (49) | 12,440 (54) | 12,440 (57.5) |
| 50 | | | | 9,900 (24) | 9,900 (37.5) | 9,900 (43.5) | 9,900 (49.5) | 9,900 (53.5) |
| 60 | | | | | 6,120 (17.5) | 6,120 (30.5) | 6,120 (39) | 6,120 (44) |
| 70 | | | | | | | 3,530 (24.5) | 3,530 (33) |
| 80 | | | | | | | | 1,530 (14) |

NOTE: () Boom angles are in degrees.

A6-829-009520B

| Boom Angle | 36 | 44 | 52 | 60 | 68 | 76 | 82 | 88 |
|------------|------------------|------------------|------------------|-----------------|-----------------|-----------------|-----------------|-----------------|
| 0° | 25,100 (30.2) | 17,150 (38.3) | 11,700 (46.3) | 8,070 (54.3) | 5,440 (62.3) | 3,480 (70.3) | 2,270 (76.3) | 1,150 (81.9) |

NOTE: () Reference radii in feet.

A6-829-009503B



POWER PINNED
36 - 114 ft.
(11.0 - 34.7 m)



14,000 lbs.
(6350 kg)



Pick & Carry
Up to 2.5 MPH



Boom Centered
Over Front

33.25 x 29 Tires



(Feet)



Pounds

| | 36 | 44 | 52 | 60 | 68 | 76 | 82 |
|----|------------------|------------------|------------------|------------------|------------------|------------------|------------------|
| 10 | 89,880 (67) | | | | | | |
| 12 | 78,630 (63) | | | | | | |
| 15 | 65,770 (57.5) | | | | | | |
| 20 | 50,940 (47) | 33,200 (56.5) | 33,200 (62.5) | | | | |
| 25 | 39,060 (34) | 32,020 (48) | 25,700 (55.5) | 25,700 (61) | 25,700 (65.5) | | |
| 30 | | 28,250 (38) | 20,300 (48.5) | 20,300 (55.5) | 20,300 (60.5) | | |
| 35 | | 15,930 (24.5) | 15,900 (40.5) | 15,900 (49.5) | 15,900 (55.5) | 15,900 (58.5) | |
| 40 | | | 12,720 (30.5) | 12,700 (42.5) | 12,700 (50) | 12,700 (54) | 12,700 (58.5) |
| 45 | | | 10,330 (14.5) | 10,300 (34.5) | 10,300 (44) | 10,300 (49) | 10,300 (54) |
| 50 | | | | 8,360 (24) | 8,190 (37.5) | 8,190 (43.5) | 8,190 (49.5) |
| 60 | | | | | 5,140 (17.5) | 4,860 (30.5) | 4,860 (39) |
| 70 | | | | | | | 2,730 (24.5) |

NOTE: () Boom angles are in degrees.

A6-829-009522B

| Boom Angle | 36 | 44 | 52 | 60 | 68 | 76 | 82 |
|------------|------------------|------------------|-----------------|-----------------|-----------------|-----------------|-----------------|
| 0° | 20,300 (30.2) | 13,700 (38.3) | 9,810 (46.3) | 6,840 (54.3) | 4,520 (62.3) | 2,680 (70.3) | 1,490 (76.3) |

NOTE: () Reference radii in feet.

A6-829-009503B



FULL POWER
36 - 114 ft.
(11.0 - 34.7 m)



13,200 lbs.
(5988 kg)



Stationary



360°

33.25 x 29 Tires



(Feet)



Pounds

| | 36 | 42 | 51 | 60 | 69 |
|----|------------------|------------------|------------------|-----------------|-----------------|
| 10 | 56,000 (67) | | | | |
| 12 | 48,000 (63) | | | | |
| 15 | 38,400 (57.5) | | | | |
| 20 | 23,250 (47) | 21,250 (54.5) | | | |
| 25 | 15,550 (34) | 15,550 (45.5) | 15,550 (55) | | |
| 30 | | 10,900 (34) | 10,000 (47.5) | | |
| 35 | | 7,610 (16.5) | 7,610 (39) | 6,050 (49.5) | |
| 40 | | | 5,300 (28.5) | 5,300 (42.5) | 4,120 (50.5) |
| 45 | | | | 3,570 (34.5) | 2,510 (45) |
| 50 | | | | 2,210 (24) | 2,210 (38.5) |

NOTE: () Boom angles are in degrees.

A6-829-009721B

| Boom Angle | 36 | 42 | 51 | 60 |
|------------|------------------|-----------------|-----------------|-----------------|
| 0° | 10,750 (30.2) | 6,940 (36.3) | 3,490 (45.3) | 1,266 (54.3) |

NOTE: () Reference radii in feet.

A6-829-009493A



FULL POWER
36 - 114 ft.
(11.0 - 34.7 m)



13,200 lbs.
(5988 kg)



Stationary



Defined Arc
Over Front
±6°

33.25 x 29 Tires



(Feet)



Pounds

| | 36 | 42 | 51 | 60 | 69 | 78 | 87 | 96 |
|----|------------------|------------------|------------------|------------------|------------------|------------------|-----------------|-----------------|
| 10 | 88,000 (67) | | | | | | | |
| 12 | 77,500 (63) | | | | | | | |
| 15 | 64,300 (57.5) | | | | | | | |
| 20 | 49,400 (47) | 38,250 (54.5) | | | | | | |
| 25 | 37,850 (34) | 37,850 (45.5) | 30,000 (55) | | | | | |
| 30 | | 27,500 (34) | 23,800 (47.5) | | | | | |
| 35 | | 20,650 (16.5) | 20,650 (39) | 19,350 (49.5) | | | | |
| 40 | | | 15,950 (28.5) | 15,950 (42.5) | 15,900 (50.5) | 15,900 (56.5) | | |
| 45 | | | | 12,500 (34.5) | 12,500 (45) | 12,500 (51.5) | | |
| 50 | | | | 9,920 (24) | 9,920 (38.5) | 9,920 (46.5) | | |
| 60 | | | | | 6,210 (20) | 6,210 (35) | 6,210 (43.5) | |
| 70 | | | | | | | 3,700 (32) | 3,700 (40.5) |
| 80 | | | | | | | 1,890 (12.5) | 1,890 (29.5) |

NOTE: () Reference radii in feet.

A6-829-009720A

| Boom Angle | 36 | 42 | 51 | 60 | 69 | 78 | 87 |
|------------|------------------|------------------|------------------|-----------------|-----------------|-----------------|-----------------|
| 0° | 24,650 (30.2) | 19,300 (36.3) | 12,350 (45.3) | 8,150 (54.3) | 5,290 (63.3) | 3,250 (72.3) | 1,690 (81.3) |

NOTE: () Boom angles are in degrees.

A6-829-009493A



FULL POWER
36 - 114 ft.
(11.0 - 34.7 m)



13,200 lbs.
(5988 kg)



Pick & Carry
Up to 2.5 MPH



Boom Centered
Over Front

33.25 x 29 Tires



| (Feet) | 36 | 42 | 51 | 60 | 69 | 78 | 87 | 96 |
|--------|------------------|------------------|------------------|------------------|------------------|---------------|-----------------|-----------------|
| 10 | 87,000 (67) | | | | | | | |
| 12 | 76,000 (63) | | | | | | | |
| 15 | 63,500 (57.5) | | | | | | | |
| 20 | 49,400 (47) | 35,850 (54.5) | | | | | | |
| 25 | 37,850 (34) | 27,800 (45.5) | 27,800 (55) | | | | | |
| 30 | | 27,500 (34) | 22,300 (47.5) | | | | | |
| 35 | | 17,750 (16.5) | 17,750 (39) | 17,750 (49.5) | | | | |
| 40 | | | 14,450 (28.5) | 14,450 (42.5) | 14,450 (50.5) | | | |
| 45 | | | | 11,800 (34.5) | 11,800 (45) | | | |
| 50 | | | | 9,670 (24) | 9,670 (38.5) | | | |
| 60 | | | | | 6,210 (20) | 6,210 (35) | 6,210 (43.5) | |
| 70 | | | | | | | 3,700 (32) | 3,700 (40.5) |
| 80 | | | | | | | 1,890 (12.5) | 1,890 (29.5) |

NOTE: () Boom angles are in degrees.

A6-829-009722A

| Boom Angle | 36 | 42 | 51 | 60 | 69 | 78 | 87 |
|------------|------------------|------------------|------------------|-----------------|-----------------|-----------------|-----------------|
| 0° | 24,650 (30.2) | 16,850 (36.3) | 11,700 (45.3) | 8,110 (54.3) | 5,290 (63.3) | 3,250 (72.3) | 1,690 (81.3) |

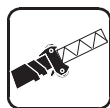
NOTE: () Boom angles are in degrees.

A6-829-009493A

Working range



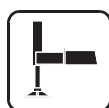
POWER PINNED
36 - 114 ft. (11.0 - 34.7 m)



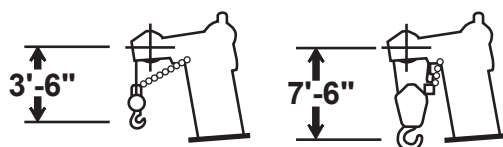
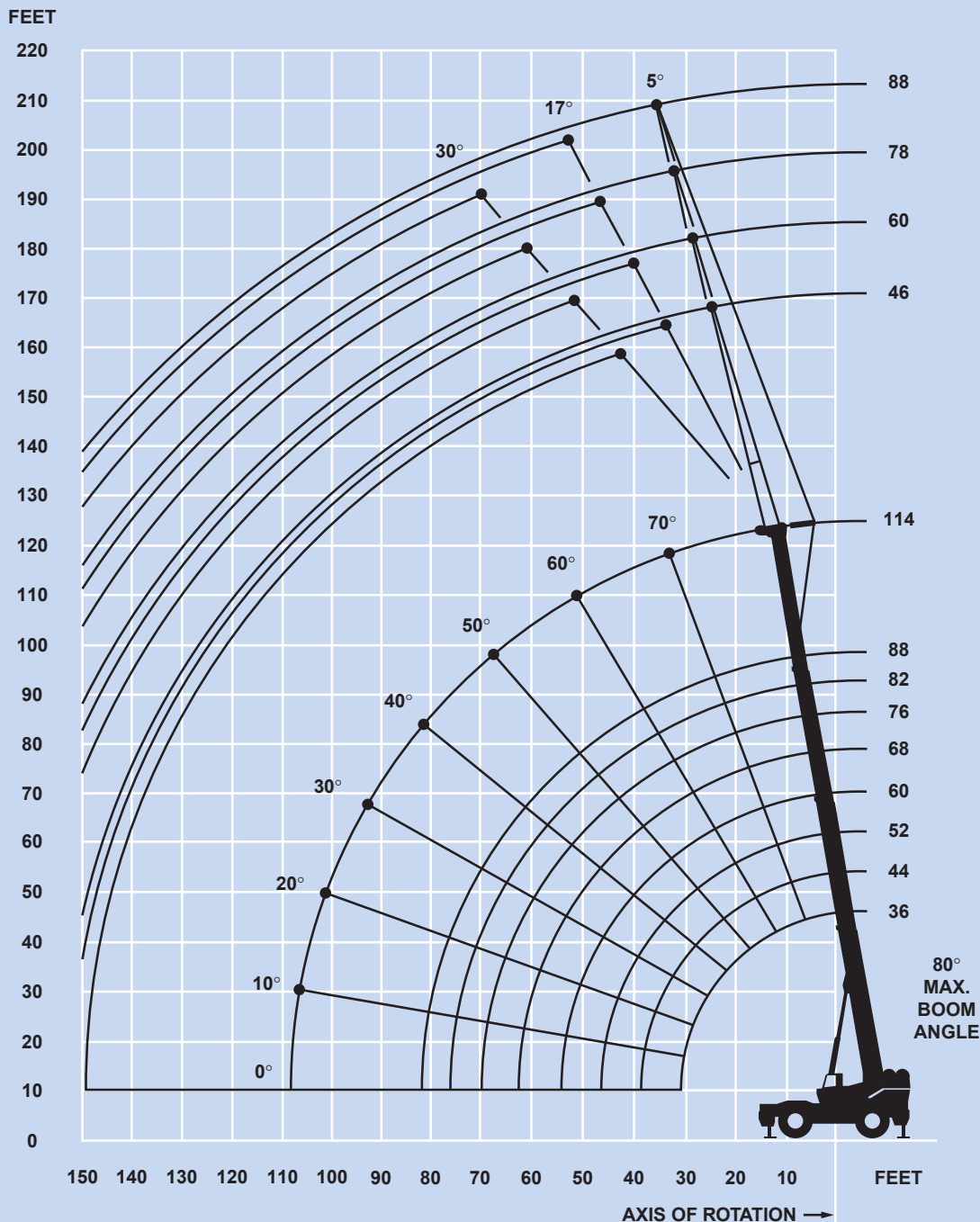
46 - 88 ft.
(14.0 - 26.8 m)



14,000 lbs.
(6350 kg)



360°



DIMENSIONS ARE FOR LARGEST GROVE FURNISHED HOOK BLOCK AND HEADACHE BALL, WITH ANTI-TWO BLOCK ACTIVATED.



POWER PINNED
36 - 114 ft.
(11.0 - 34.7 m)



46 - 88 ft.
(14.0 - 26.8 m)



14,000 lbs.
(6350 kg)



100%
26' 6" (8.9 m)
Spread



360°



Pounds

114 FT. BOOM + 46 FT. JIB

| Boom Angle | 5° OFFSET | | 17° OFFSET | | 30° OFFSET | | 5° OFFSET | | 17° OFFSET | | 30° OFFSET | |
|------------|------------------|-------------|------------------|-------------|------------------|-------------|------------------|-------------|------------------|-------------|------------------|-------------|
| | Rad. Ref. (ft.)* | Cap. lbs.** | Rad. Ref. (ft.)* | Cap. lbs.** | Rad. Ref. (ft.)* | Cap. lbs.** | Rad. Ref. (ft.)* | Cap. lbs.** | Rad. Ref. (ft.)* | Cap. lbs.** | Rad. Ref. (ft.)* | Cap. lbs.** |
| 80 | 32.0 | 14,000 | 41.0 | 11,950 | 49.0 | 8,480 | 36.3 | 10,600 | 48.2 | 8,160 | 58.0 | 5,680 |
| 77.5 | 38.4 | 13,350 | 47.2 | 11,550 | 55.2 | 8,080 | 43.3 | 9,970 | 54.5 | 7,790 | 64.7 | 5,320 |
| 75 | 44.9 | 12,800 | 53.2 | 11,150 | 61.2 | 7,690 | 50.3 | 9,490 | 60.9 | 7,450 | 71.3 | 5,020 |
| 72.5 | 51.2 | 12,250 | 59.6 | 10,300 | 67.2 | 7,350 | 57.2 | 8,930 | 67.5 | 7,130 | 77.8 | 4,760 |
| 70 | 57.5 | 9,930 | 65.4 | 8,390 | 72.9 | 7,020 | 63.9 | 8,380 | 74.1 | 6,830 | 84.2 | 4,540 |
| 67.5 | 63.7 | 7,970 | 71.4 | 6,870 | 78.6 | 6,100 | 70.6 | 6,710 | 80.6 | 5,610 | 90.3 | 4,340 |
| 65 | 69.7 | 6,450 | 77.1 | 5,640 | 84.1 | 5,080 | 77.1 | 5,380 | 86.8 | 4,580 | 96.3 | 4,030 |
| 62.5 | 75.6 | 5,240 | 82.8 | 4,640 | 89.5 | 4,220 | 83.4 | 4,320 | 92.7 | 3,730 | 102.1 | 3,310 |
| 60 | 81.3 | 4,250 | 88.2 | 3,800 | 94.7 | 3,490 | 89.6 | 3,460 | 98.6 | 3,010 | 107.8 | 2,700 |
| 55 | 92.4 | 2,750 | 99.0 | 2,490 | 104.4 | 2,320 | 101.4 | 2,130 | 110.0 | 1,870 | 118.3 | 1,700 |
| 50 | 102.7 | 1,660 | 108.2 | 1,520 | 113.4 | 1,420 | 112.5 | 1,160 | 121.9 | 1,010 | 128.1 | 920 |

114 FT. BOOM + 74 FT. JIB

| Boom Angle | 5° OFFSET | | 17° OFFSET | | 30° OFFSET | | 5° OFFSET | | 17° OFFSET | | 30° OFFSET | |
|------------|------------------|-------------|------------------|-------------|------------------|-------------|------------------|-------------|------------------|-------------|------------------|-------------|
| | Rad. Ref. (ft.)* | Cap. lbs.** | Rad. Ref. (ft.)* | Cap. lbs.** | Rad. Ref. (ft.)* | Cap. lbs.** | Rad. Ref. (ft.)* | Cap. lbs.** | Rad. Ref. (ft.)* | Cap. lbs.** | Rad. Ref. (ft.)* | Cap. lbs.** |
| 80 | 39.8 | 8,160 | 53.7 | 5,840 | 67.2 | 4,140 | 44.2 | 6,310 | 59.4 | 4,050 | 76.7 | 2,510 |
| 77.5 | 47.5 | 7,620 | 60.8 | 5,480 | 74.2 | 3,860 | 52.2 | 5,750 | 67.2 | 3,690 | 83.9 | 2,290 |
| 75 | 55.1 | 7,090 | 67.8 | 5,150 | 81.2 | 3,600 | 60.2 | 5,250 | 75.2 | 3,380 | 91.1 | 2,090 |
| 72.5 | 62.6 | 6,620 | 75.6 | 4,850 | 87.9 | 3,390 | 68.1 | 4,790 | 83.5 | 3,100 | 98.0 | 1,920 |
| 70 | 69.9 | 6,200 | 82.5 | 4,570 | 94.5 | 3,190 | 75.8 | 4,370 | 90.6 | 2,820 | 104.8 | 1,750 |
| 67.5 | 77.2 | 5,670 | 89.5 | 4,320 | 100.8 | 3,020 | 83.4 | 3,990 | 97.7 | 2,570 | 114.3 | 1,610 |
| 65 | 84.2 | 4,500 | 95.8 | 3,730 | 107.1 | 2,870 | 90.9 | 3,660 | 105.0 | 2,340 | 117.7 | 1,480 |
| 62.5 | 91.2 | 3,560 | 102.5 | 2,970 | 113.0 | 2,590 | 98.2 | 2,970 | 111.4 | 2,100 | 123.8 | 1,360 |
| 60 | 97.9 | 2,790 | 109.2 | 2,340 | 118.8 | 2,050 | 105.2 | 2,260 | 118.2 | 1,840 | | |
| 55 | 110.9 | 1,590 | 121.3 | 1,340 | 129.7 | 1,170 | 118.8 | 1,170 | 131.0 | 940 | | |

*Reference radius refers to fully extended boom and appropriate jib length.

**Capacities at loaded main boom angle.

A6-829-008615A

Rated lifting capacities

IMPORTANT NOTES:

WARNING: THIS CHART IS ONLY A GUIDE.

The notes below are for illustration only and should not be relied upon to operate the crane. The individual crane's load chart, operating instructions and other instruction plates must be read and understood prior to operating the crane.

1. All rated loads meet ANSI/ASME B30.5, Mobile and Locomotive Cranes. Testing and development were performed to SAEJ1063, Cantilevered Boom Crane Structures - Method of Test, and SAEJ765 Crane Stability Test Code.

2. Rated loads include the weight of hookblock, slings and auxiliary lifting devices and their weights shall be subtracted from the listed rating to obtain the net load to be lifted. When more than the minimum required hoist reeving is used, the additional rope weight shall be considered part of the load to be handled.

3. Defined Arc $\pm 6^\circ$ on either side of longitudinal centerline of machine.

4. Capacities appearing above the bold line are based on structural strength. Tipping should not be relied upon as a capacity indication.

5. The machine shall be leveled on a firm supporting surface. Depending on the nature of the supporting surface, it may be necessary to have structural supports under the outrigger floats or tires to spread the load to a larger bearing surface.

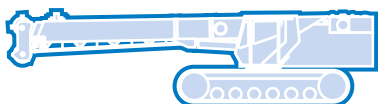
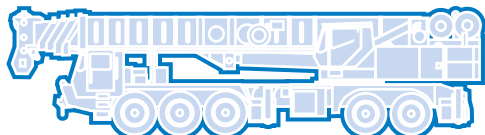
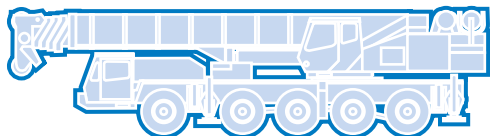
6. When either boom length or radius or both are between values listed, the smallest load shown at either the next larger radius or next longer or shorter boom length shall be used.

7. Tires shall be inflated to the recommended pressure before lifting on rubber.

8. For outrigger operation, outriggers shall be properly extended with tires raised free of crane weight before operating the boom or lifting loads.

Symbols Glossary

| | | | |
|---|--------------------|---|------------------|
|  | Frame |  | Steering |
|  | Outriggers |  | Transmission |
|  | Outrigger Controls |  | Axles |
|  | Engine |  | Brakes |
|  | Fuel Tank Capacity |  | Tires |
|  | Electrical System |  | Suspension |
|  | Drive |  | Rotation |
|  | Lights |  | Boom Elevation |
|  | Cab |  | Swing |
|  | Boom |  | Counterweight |
|  | Fixed Swingaway |  | Oil |
|  | Tele-Swingaway |  | Hydraulic System |
|  | Jib |  | Hoist |
|  | Boom Nose |  | Radius |
|  | Boom Extension |  | Boom Length |
|  | Speed |  | Hookblock |
|  | Grade |  | Gear |
|  | Lattice Extension |  | Luffing Jib |



GROVE
worldwide

Grove Worldwide – World Headquarters

Grove North America
1565 Buchanan Trail East
P.O. Box 21
Shady Grove, Pennsylvania 17256, U.S.A.
Tel: [Int + 1] (717) 597-8121
Fax: [Int + 1] (717) 597-4062
Western Hemisphere, Asia/Pacific

Grove Europe Limited*

Sunderland SR4 6TT, England
Tel: [Int + 44] 191 565-6281
Fax: [Int + 44] 191 564-0442
Europe, Africa, Middle East

Grove Europe Limited*

P.O. Box No. 268
4A Kimber Road
Abingdon, Oxfordshire, OX141SG
Tel: [Int + 44] 1235 55-3184
Fax: [Int + 44] 1235 55-3218
*Grove Europe Limited, Registered in England,
Number 1845128, Registered office, Crown Works,
Pallion, Sunderland, Tyne & Wear, England SR4 6TT

**Deutsche Grove GmbH
Sales and Service**

Helmholtzstrasse 12, Postfach 5026
D-40750 Langenfeld, Germany
Tel: [Int + 49] (2173) 8909-0
Fax: [Int + 49] (2173) 8909-30

Wilhelmshaven Works

Industriegelände West, Postfach 1853
D-26358 Wilhelmshaven, Germany
Tel: [Int + 49] (4421) 294-0
Fax: [Int + 49] (4421) 294-301

Grove France S.A.

16, chaussée Jules-César, 95520 OSNY
B.P. 203, 95523 CERGY PONTOISE CEDEX
France
Tel: [Int + 33] (1) 30313150
Int: [Int + 33] (1) 30386085

Grove Asia/Pacific - Regional Office

171 Chin Swee Road
#06-01 San Centre
Singapore 0316
Tel: [Int + 65] 536-6112
Fax: [Int + 65] 536-6119
Asia/Pacific, Near East

Grove China - Representative Office

Beijing Suite 6074
No. 33 East Chang An Avenue
Beijing, 100004, China
Tel: [Int + 86] (10) 513-7766
Fax: [Int + 86] (10) 513-7307

Grove Product Support

Western Hemisphere, Asia/Pacific
1086 Wayne Avenue
Chambersburg, Pennsylvania USA
Tel: [Int + 1] (717) 263-5100
Fax: [Int + 1] (717) 267-0404

Europe, Africa, Middle East
Sunderland SR4 6TT, England
Tel: [Int + 44] 191 565-6281
Parts Fax: [Int + 44] 191 510-9242
Service Fax: [Int + 44] 191 510-9560

<http://www.groveworldwide.com>

Bigge Crane and Rigging Co.

10700 Bigge Avenue
San Leandro, CA 94577
Phone: (888) 337-BIGGE or (510) 638-8100
Fax: (510) 639-4053
Email: info@bigge.com
Web site: www.bigge.com

Constant improvement and engineering progress make it necessary that we reserve the right to make specification, equipment, and price changes without notice. Illustrations shown may include optional equipment and accessories and may not include all standard equipment.

Distributed By: