

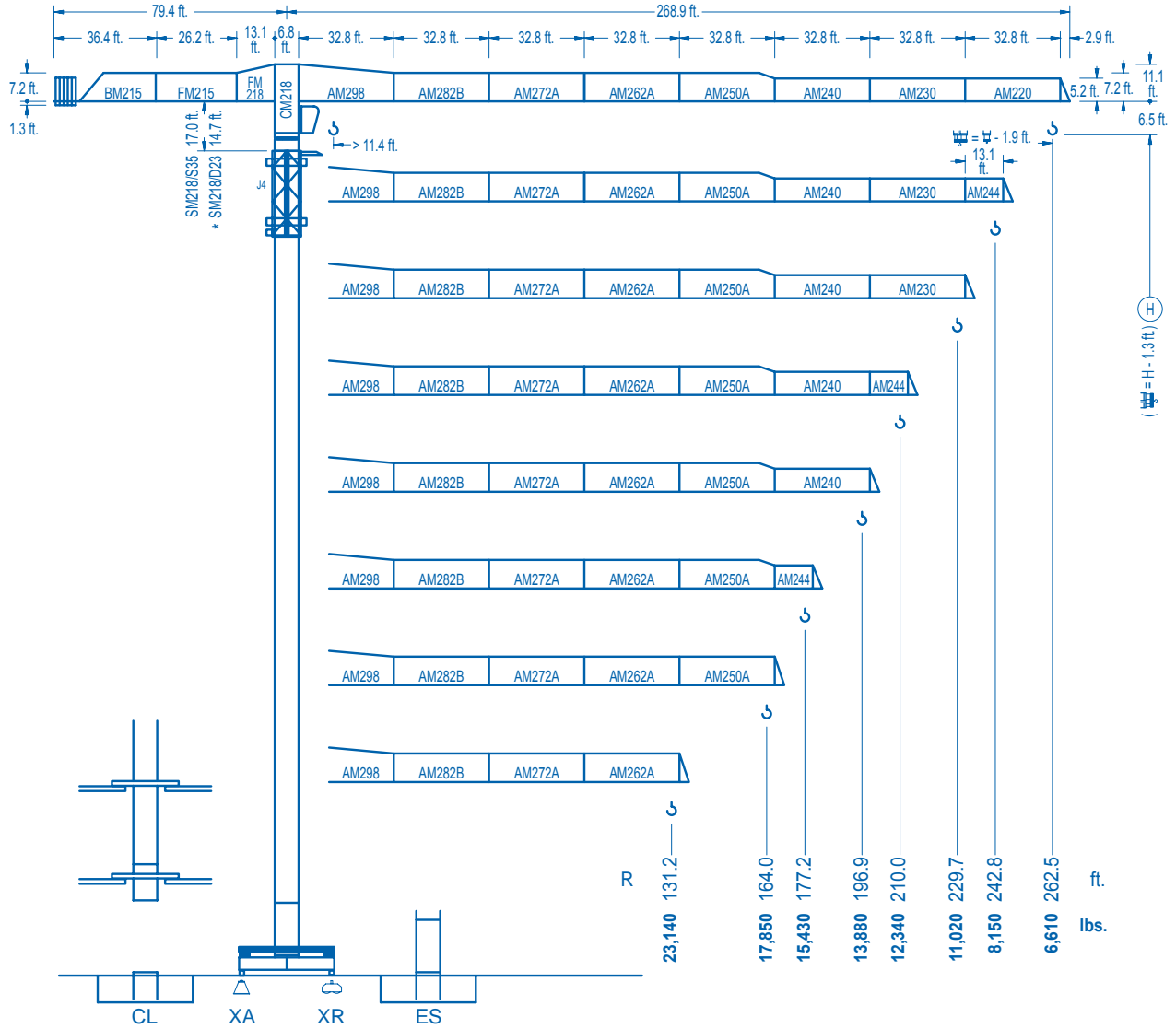


LINDEN COMANSA

LINDEN 2100

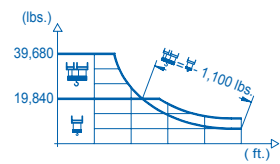
21 LC 400

39,680 lbs.

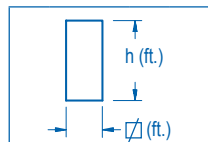
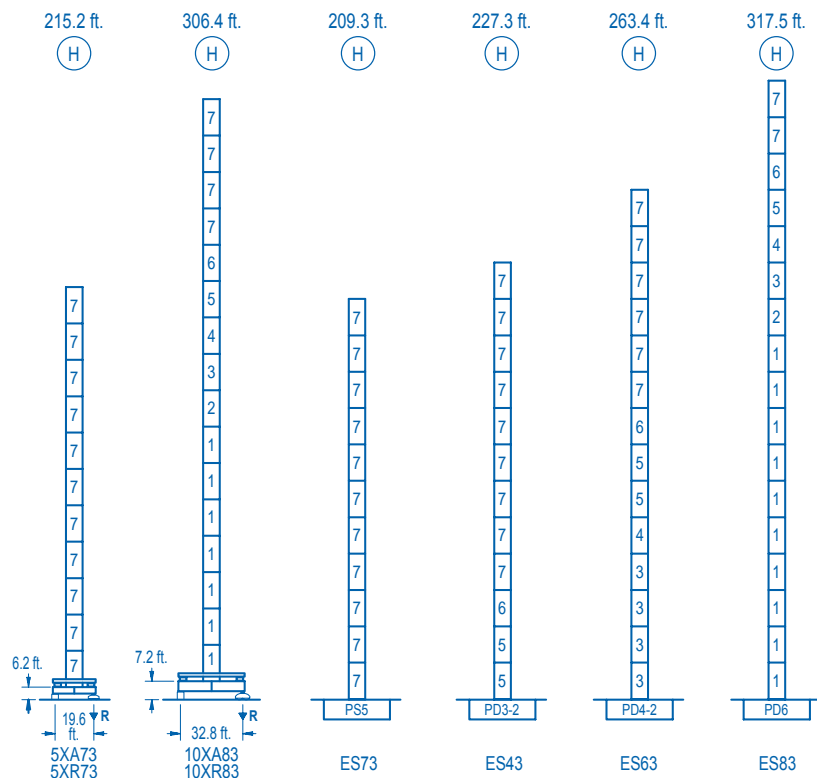


CE EN 14439 (C/25)

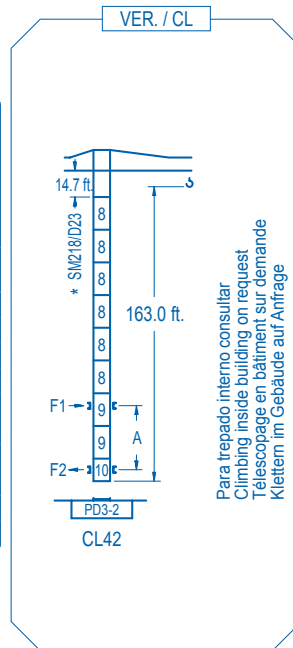
R (ft.)	H														H																	
262.5	54.5	65.6	82.0	98.8	100.1	111.5	131.2	144.4	164.0	177.2	196.9	210.0	229.7	242.8	262.5	ft.	39,680	32,020	24,720	19,840	19,840	17,580	14,680	13,190	11,430	10,470	9,280	8,600	7,740	7,260	6,610	lbs.
242.8	59.1	65.6	82.0	107.6	110.2	111.5	131.2	144.4	164.0	177.2	196.9	210.0	229.7	242.8	ft.	39,680	35,220	27,250	19,840	19,840	19,560	16,350	14,710	12,760	11,700	10,380	9,640	8,690	8,150	lbs.		
229.7	71.2	82.0	98.4	111.5	129.9	135.2	144.4	164.0	177.2	196.9	210.0	229.7	ft.	39,680	33,760	27,420	23,730	19,840	19,840	18,440	16,030	14,720	13,100	12,190	11,020	lbs.						
210.0	71.5	82.0	98.4	111.5	130.9	136.5	144.4	164.0	177.2	196.9	210.0	ft.	39,680	33,970	27,600	23,880	19,840	19,840	18,670	16,220	14,910	13,270	12,340	lbs.								
196.9	73.8	82.0	98.4	111.5	135.5	142.1	144.4	164.0	177.2	196.9	ft.	39,680	35,250	28,670	24,830	19,840	19,840	19,510	16,970	15,590	13,880	lbs.										
177.2	72.8	82.0	98.4	111.5	133.5	140.7	144.4	164.0	177.2	ft.	39,680	34,700	28,200	24,430	19,840	19,840	19,300	16,780	15,430	lbs.												
164.0	76.4	82.0	98.4	111.5	140.4	149.0	164.0	ft.	39,680	36,710	29,870	25,900	19,840	19,840	17,850	lbs.																
131.2	80.4	82.0	98.4	111.5	131.2	ft.	39,680	38,740	31,550	27,370	23,140	lbs.																				



DS.1003.04 01/10 Reserva de modificaciones. Subject to modifications. Modifications réservées. Konstruktionsänderungen vorbehalten.



nº	Ref.	W	h
1	D36	8.2	18.0
2	TD36A	8.2	18.0
3	D34	8.2	18.0
4	TD34	8.2	18.0
5	D33	8.2	18.0
6	TD33A	8.2	18.0
7	S35	8.2	18.0
8	D23	6.6	18.0
9	D23A	6.6	18.0
10	CLD23A	6.6	10.2



Para trepado interno consultar
Climbing inside building on request
Telescopage en bâtiment sur demande
Klettern im Gebäude auf Anfrage

R. máx.	En servicio In operation En service In Betrieb	5XR73.....279,540 lbs. 10XR83.....273,810 lbs.	R. máx.	Fuera de servicio Out of service Hors service Ausser Betrieb	5XR73.....252,870 lbs. 10XR83.....466,050 lbs.

Para otras zonas de viento o alturas superiores consultar
For other wind zones or additional hook heights on request
Pour d'autres zones de vent ou des hauteurs supplémentaires sur demande
Für andere Windzonen oder weiteren Hakenhöhen auf Anfrage

	5XA73	10XA83
A max	168.6	259.8
B max	- 108.3	- 108.3
C max	154.9	154.9
H max	98.6	126.4

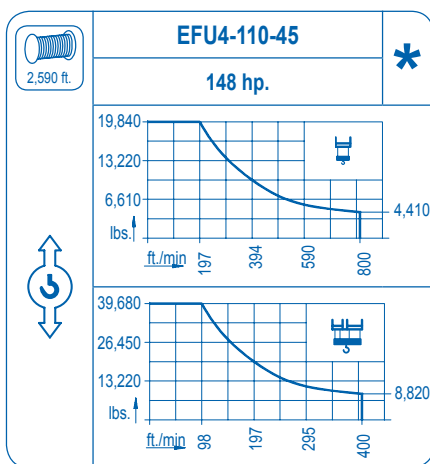
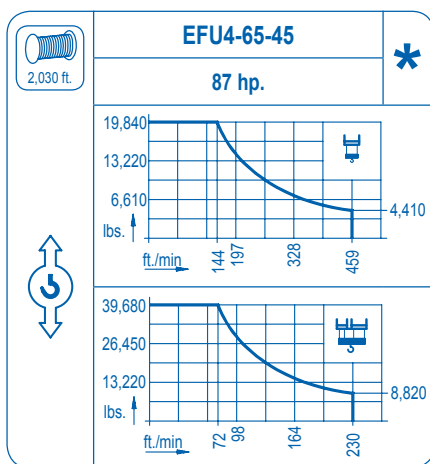
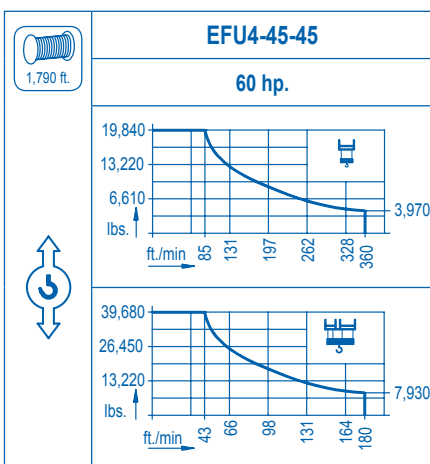
	ES73	ES43	ES63	ES83
A max	162.7	180.8	216.9	271.0
B max	108.3	108.3	108.3	108.3
C max	154.9	154.9	154.9	154.9
H max	317.6	425.9	335.6	443.9

CFU-7.5
10 hp.
0 ⇄ 308 ft./min

GR-12
4 x 88 ft.lbs.
0 ⇄ 0.7 rpm

TRA-7.5 **TRA-10**
2 x 55 ft.lbs. 2 x 74 ft.lbs.
0 ⇄ 78 ft./min
5XR73 10XR83

*** TRA-7.5VC** **TRA-10VC**
2 x 55 ft.lbs 2 x 74 ft.lbs.
0 ⇄ 78 ft./min
5XR73 10XR83



Tensión de alimentación Operating voltage Tension de service Betriebsspannung	480 V 3 ph 60 Hz
--	------------------------

Opcional Optional En option Kaufoption	*
---	---