

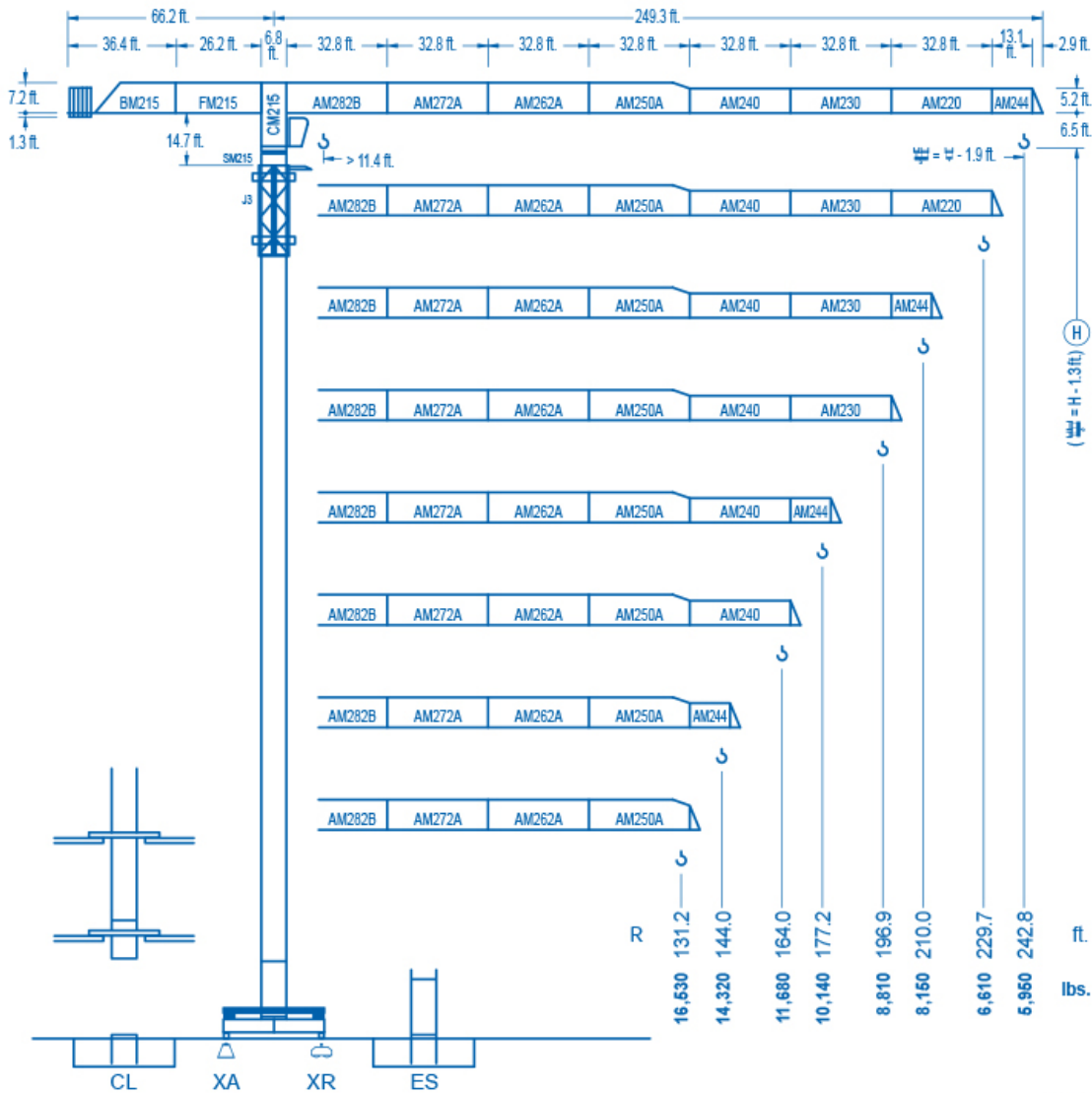


LINDEN COMANSA

LINDEN 2100

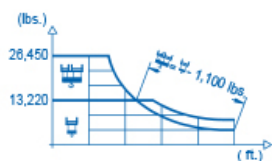
21 LC 290

26,450 lbs.

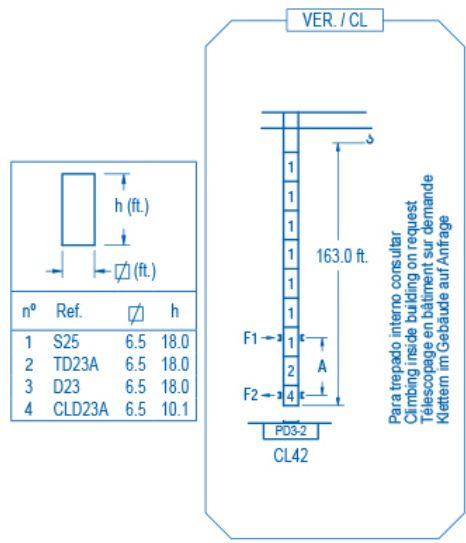
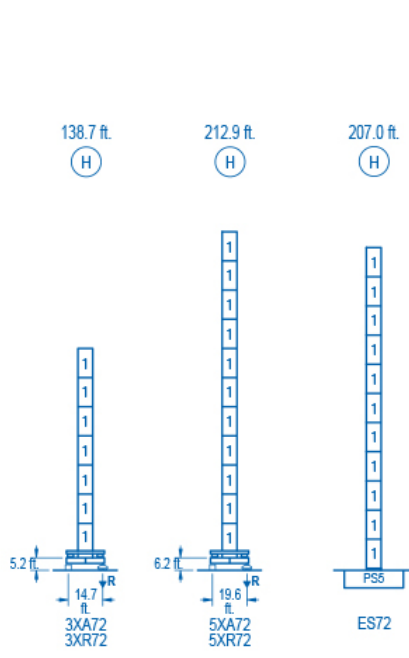


CE EN 14439 (C/25)

| R (ft.) | H | | | | H | | | | | | | | | |
|---------|--------|--------|--------|--------|--------|--------|--------|--------|--------|-------|-------|-------|-------|------|
| 242.8 | 66.3 | 82.0 | 98.4 | 117.8 | 122.4 | 131.2 | 144.4 | 164.0 | 177.2 | 196.9 | 210.0 | 229.7 | 242.8 | ft. |
| | 26,450 | 20,600 | 16,530 | 13,220 | 13,220 | 12,220 | 10,970 | 9,470 | 8,660 | 7,660 | 7,090 | 6,370 | 5,950 | lbs. |
| 229.7 | 67.9 | 82.0 | 98.4 | 120.7 | 126.3 | 131.2 | 144.4 | 164.0 | 177.2 | 196.9 | 210.0 | 229.7 | ft. | |
| | 26,450 | 23,080 | 18,580 | 15,970 | 13,220 | 12,660 | 11,360 | 9,820 | 8,980 | 7,940 | 7,360 | 6,610 | lbs. | |
| 210.0 | 73.2 | 82.0 | 98.4 | 111.5 | 129.9 | 137.5 | 144.4 | 164.0 | 177.2 | 196.9 | 210.0 | ft. | | |
| | 26,450 | 23,080 | 18,580 | 15,970 | 13,220 | 13,220 | 12,530 | 10,840 | 9,930 | 8,790 | 8,150 | lbs. | | |
| 196.9 | 72.5 | 82.0 | 98.4 | 111.5 | 129.3 | 137.8 | 144.4 | 164.0 | 177.2 | 196.9 | ft. | | | |
| | 26,450 | 22,900 | 18,450 | 15,860 | 13,220 | 13,220 | 12,550 | 10,860 | 9,950 | 8,810 | lbs. | | | |
| 177.2 | 73.2 | 82.0 | 98.4 | 111.5 | 130.6 | 140.1 | 144.4 | 164.0 | 177.2 | ft. | | | | |
| | 26,450 | 23,140 | 18,650 | 16,030 | 13,220 | 13,220 | 12,780 | 11,060 | 10,140 | lbs. | | | | |
| 164.0 | 76.1 | 82.0 | 98.4 | 111.5 | 131.2 | 135.8 | 147.0 | 164.0 | ft. | | | | | |
| | 26,450 | 24,260 | 19,570 | 16,850 | 13,810 | 13,220 | 13,220 | 11,680 | lbs. | | | | | |
| 144.4 | | 85.0 | 98.4 | 111.5 | 121.4 | 131.2 | 144.4 | ft. | | | | | | |
| | | 26,450 | 22,260 | 19,210 | 17,370 | 15,800 | 14,320 | lbs. | | | | | | |
| 131.2 | | 86.6 | 98.4 | 111.5 | 121.4 | 131.2 | ft. | | | | | | | |
| | | 26,450 | 22,800 | 19,680 | 17,800 | 16,530 | lbs. | | | | | | | |



DS.1003.07 01/10 Reserva de modificaciones. Subject to modifications. Modifications réservées. Konstruktionsänderungen vorbehalten.



| | | | | | |
|----------------|---|--|----------------|---|--|
| R. máx. | En servicio In operation En service In Betrieb | 3XR72.....231,480 lbs. 5XR72.....235,890 lbs. | R. máx. | Fuera de servicio Out of service Hors service Ausser Betrieb | 3XR72.....162,700 lbs. 5XR72.....235,010 lbs. |
|----------------|---|--|----------------|---|--|

Para otras zonas de viento o alturas superiores consultar
For other wind zones or additional hook heights on request
Pour d'autres zones de vent ou des hauteurs supplémentaires sur demande
Für andere Windzonen oder weiteren Hakenhöhen auf Anfrage

| | 3XA72 | 5XA72 | ES72 |
|-------|-------|-------|-------|
| A max | 95.5 | 168.6 | 162.7 |
| B max | 108.3 | 108.3 | 108.3 |
| C max | 170.6 | 152.6 | 152.6 |
| H max | 266.1 | 356.3 | 321.2 |

CFU-7.5
10 hp.
0 ⇄ 308 ft./min

GR-12
3 x 88 ft.lbs.
0 ⇄ 0.7 rpm

TRA-7.5
2 x 55 ft.lbs.
0 ⇄ 78 ft./min

TRA-7.5VC *
2 x 55 ft.lbs.
0 ⇄ 78 ft./min
5XR72

EFU2-37-30
1,260 ft.
50 hp.
13,220 lbs. / 111 ft./min
9,920 lbs. / 131 ft./min
6,610 lbs. / 197 ft./min
4,850 lbs. / 262 ft./min
26,450 lbs. / 56 ft./min
19,840 lbs. / 66 ft./min
13,220 lbs. / 90 ft./min
9,700 lbs. / 131 ft./min

EFU4-45-30 *
1,790 ft.
60 hp.
13,220 lbs. / 125 ft./min
8,820 lbs. / 262 ft./min
4,410 lbs. / 394 ft./min
2,640 lbs. / 525 ft./min
26,450 lbs. / 62 ft./min
17,630 lbs. / 131 ft./min
8,820 lbs. / 197 ft./min
5,290 lbs. / 262 ft./min

EFU4-65-30 *
2,590 ft.
87 hp.
13,220 lbs. / 174 ft./min
8,820 lbs. / 262 ft./min
4,410 lbs. / 394 ft./min
2,640 lbs. / 525 ft./min
26,450 lbs. / 88 ft./min
17,630 lbs. / 131 ft./min
8,820 lbs. / 197 ft./min
5,290 lbs. / 328 ft./min
5,290 lbs. / 387 ft./min

| | |
|--|------------------------|
| Tensión de alimentación Operating voltage Tension de service Betriebsspannung | 480 V 3 ph 60 Hz |
|--|------------------------|

| | |
|---|---|
| Opcional Optional En option Kaufoption | * |
|---|---|

LINDEN COMANSA
Construcciones Metálicas COMANSA S. A.

Tel.: (34) 948 335 020
Fax: (34) 948 330 810
e-mail: info@comansa.com
www.comansa.com
Polígono Urbizkain
E-31620 HUARTE-PAMPLONA.- SPAIN

| | | | |
|------------|-------|-----------|-------------|
| DS.1003.07 | 01/10 | 21 LC 290 | 26,450 lbs. |
|------------|-------|-----------|-------------|