



NEW Telescoping Crawler Crane

CC1485-1



Maximum Crane Capacity

13,200 lb (6,000 kg)



NEW Telescoping Crawler Crane CC1485-1

Specifications

Model	CC1485-1	
Crane capacity & reach	Crane max. capacity	13,200 lb (6,000 kg)
	Max. working radius	52.8' (16.1 m)
	Max. lifting height	54.8' (16.7 m), 72.2' (22.0 m) with fly jib
	Max. reach below ground level	80.7' (24.6 m), 165.7' (50.5 m), 339.5' (103.5 m), 4-2-1 part
	Max. pick & carry capacity	4,400 lb (2,000 kg)
Weight & dimension	Machine weight	31,747 lb (14,400 kg) +560 lb (250 kg) fly jib
	Overall length x width x height	21'3" (6,460 mm) x 8'2" (2,490 mm) x 9'5" (2,865 mm)
	Crawler standard pad width	18" (500 mm)
	Swing radius / tail swing	5'11" (1,550 mm) / 1'0" (305 mm) over side only
2 Speed winch system	Hook block	standard 3 sheave hook block for 4 & 2 part reeving
	Hook block speed low/high	105' (32.0 m) / 15' (46.0 m) ft/min, 4th layer-4 part
	Hoist wire rope standard	NWRC 6 x 19 (29) ø10mm x 377' (115 m)
Telescopic system	Boom type	Fully automatic 5-section heptagonal telescopic boom
	Main boom length min/max	15'6" (4,745 m) ~ 53'4" (16,265 m)
	Boom telescoping to full stroke	37°9' (11.52 m) / 33 sec
Boom tilt system	Tilt angle / time	-4~80 degree / 19 sec
Swing system	Slew angle / time	360deg / 1.9pm
Drive system	2 speed travel low/high	low 1.18 mph (1.9 km/h) / high 1.99 mph (3.2 km/h)
	Gradeability	20 degree set limit
	Ground pressure w/ std. pad	7.12 psi (50 kg/cm ²)
Diesel engine	Model	ISUZU 4LE2-DPC
	Emission level	EPA tier 4 final
	Displacement	2.179 L (2.179cc)
	Rated output	54.04 hp (40.3 kw / 2,000min ⁻¹)
	Fuel / fuel tank capacity	30.8 gallons (140 L)
Standard safety features & performance device	anti two-block, winch low cable auto-stop, tilt/rotation alarm, EMO switch, moment limiter digital load system w/ auto stop & working area limits, engine/machine performance monitor, working status lamp, rear view camera, data logger, work & boom lights	



Safety

Moment limiter digital load system:

- Anti two-block
- Winch low cable auto-stop
- Crane interlock, automatic stop of danger functions
- Operator programmable working envelope area limits
- Engine/machine performance monitor
- Rated capacity charts for stationary, pick & carry, and optional fly jib lifting operations



Engine Power

State of the art Isuzu diesel engine

- EPA Tier 4 final emission status
- Increased fuel efficiency (40% better than Tier 3 engines)

Cab

Controlled environment operators cab:

- Air conditioning, heater and defroster
- Joy stick crane operational controls
- Low/high speeds on winch & travel
- 360 degree panoramic view safety glass
- Automatic rear facing camera
- Windshield and roof wipers



Options

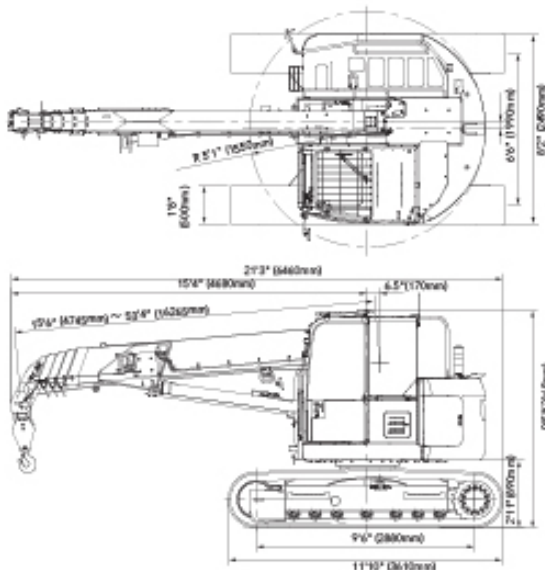
- Fly jib with four offset angles
- Bolt-on track pads, black rubber or gray non-marking
- Wireless remote control
- Single part ball/hook
- Railroad rail drive track attachment

Compactness

- Small enough for indoor plant & refinery, fits through bay doors
- Zero tail swing front & rear
- Only 1' tail swing over the side
- Transport height under 9 1/2'
- Zero forward overhang w/boom raised
- Removable counterweight for reduced transportation weight
- Fits between highway barriers



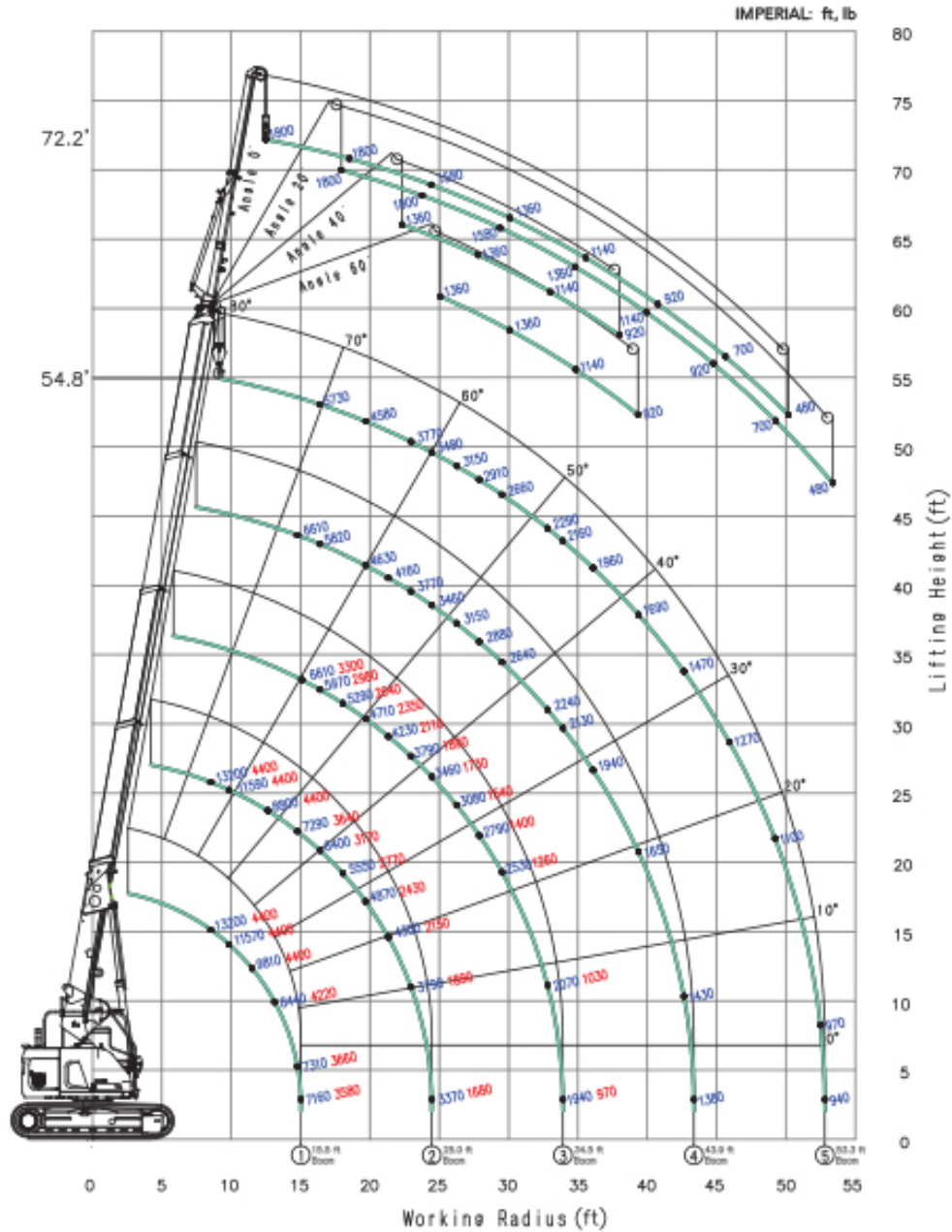
Dimensions



⚠ Before use, please read the Operation Manual

Due to improvements, the specifications are subject to change without notice. ASME B 30.5 2014, ISO 9001 compliant.

MAEDA CC1485-1 RATED LOAD WORKING RANGE CHART


Notes:

- This chart lists the main boom tip capacities using 4-part line reeving on the hook block. When using 2-part reeving on the hook block the rated loads are limited to 6,600 lb. When reeved for 1-part line use, from the main boom tip, the rated loads are limited to 3,300 lb.
- Standard supplied hook block weight is 200 lb.
- Pick & carry duty is possible within boom length stages 1, 2 and 3. The pick & carry capacities are listed in **RED** following the stationary capacities (*stationary/pick & carry*).

This chart is for sales reference only. Do not use this chart for lifting. Refer to the actual machine's total load chart and its notes for exact details.



021417

MAEDA CC1485-1 RATED TOTAL LOAD CHART

FOR 4-PART, MAIN BOOM, HOOK BLOCK

Unit: ft & lb

Working radius (ft.)	15.5' Boom		<= 25.0' Boom		<=34.5' Boom		<=43.9' Boom	<=53.3' Boom
	Stationary	Pick & Carry	Stationary	Pick & Carry	Stationary	Pick & Carry	Stationary	Stationary
6.5	13200	4400	13200	4400	8810	3300		
8.2	13200	4400	13200	4400	8810	3300	8810	
8.5	13200	4400	13200	4400	8810	3300	8810	
9.8	11570	4400	11590	4400	8810	3300	8810	5730
10.4	10820	4400	10840	4400	8810	3300	8810	5730
11.4	9810	4400	9830	4400	8810	3300	8810	5730
12.6	8810	4400	8810	4400	8810	3300	8810	5730
13.1	8440	4220	8420	4210	8810	3300	8810	5730
14.7	7310	3650	7290	3640	8810	3300	8810	5730
15.0	7180	3580	7140	3570	8810	3300	8480	5730
15.2			7090	3550	8810	3300	8430	5730
16.4			6340	3170	5970	2980	5820	5730
18.0			5550	2770	5290	2640	5150	5110
19.6			4670	2430	4710	2350	4630	4580
21.3			4300	2150	4230	2110	4160	4140
22.9			3790	1890	3790	1890	3770	3770
24.4			3370	1680	3480	1730	3460	3480
24.6					3410	1700	3440	3440
26.2					3080	1540	3150	3150
27.8					2790	1400	2890	2910
28.5					2530	1280	2640	2680
32.8					2070	1030	2240	2290
33.9					1940	970	2130	2180
36.0							1940	1960
39.3							1650	1690
42.6							1430	1470
43.3							1380	1430
45.9								1270
49.1								1100
52.4								970
52.8								940
Boom angle range (deg)	0~84.3		0~74.4		0~78.8		0~80.0	0~80.0

Notes:

- When using 2-part reeving on the hook block the rated loads are limited to 6,600 lb. When reeved for 1-part line use, from the main boom tip, the rated loads are limited to 3,300 lb.
- "Boom angle range" lists the maximum boom angle, as to achieve the minimum listed working radius, with the longest boom of that boom length range.
- The standard supplied hook block weight is 200 lb.
- This chart is for sales reference only. Do not use this chart for lifting. Refer to the actual machine's Rated Total Load chart and its notes for exact details.

Maeda USA
 Tel: (713) 715-1500
 Email: cranes@maedausa.com
 www.maedausa.com



**USA • CANADA
 LATIN AMERICA**